



GRADUATE

**PUBLIC
TRANSPORT
AUTHORITY**

PROGRAM



Public Transport
Authority

DO BIG. DO IMPORTANT. DO GOOD.

DO BIG. DO IMPORTANT. DO GOOD.

THINGS ARE HAPPENING AT THE PUBLIC TRANSPORT AUTHORITY. SUSTAINABLE, WORLD-CLASS, CAREER-DEFINING THINGS.

Fast track your career with the PTA Graduate Development Program.

The Public Transport Authority (PTA) provides world-class public transport services and solutions. The PTA is responsible for the development of Australia's best public transport network and is constantly striving to ensure that our network remains one of the safest, cleanest and most efficient in the world.

With access to leading-edge technology and the support of our expert team, successful Graduate Development Program applicants will tackle unique infrastructure challenges across projects that deliver tangible benefits to the Western Australian community.

If making a difference is in your nature, you'll be hard-pressed to find a more rewarding place to start your career than at the PTA.

Here's the opportunity:

- Work for WA's leading transport agency in a growing industry with long-term employment possibilities.
- Make a difference to your community and contribute to a more sustainable future for WA.
- Be challenged and supported by an incredible team of people who are invested in your growth and development.

We're looking for talented graduates from a wide range of disciplines:

- Civil Engineering
- Electrical Engineering
- Mechanical Engineering
- Mechatronic Engineering
- Cyber Security & Networking
- Environmental



GRADUATE PROGRAM BENEFITS

We offer lots more than a promising career path in a growing industry.

Shaping the future of WA transport is no easy feat, but it's crucial for our state's growth. Successful graduates will have a lot to learn and even more to do – but you'll never have to do it alone.

We value the future leaders of our industry and are committed to providing our graduates with benefits that support their happiness, wellbeing and growth:

- Individual support from a dedicated Graduate Coordinator.
- A two-year rotation plan designed to develop and broaden your skills through direct business experience in line with your discipline.
- Great work-life balance with access to health and wellbeing initiatives, a free gym and flexible working conditions.
- Access to leading-edge technology and opportunities to learn from some of the most knowledgeable engineers, transport professionals, managers and policymakers in Australia.
- Salary packaging, regular salary reviews and performance feedback.
- Financial assistance and study leave for further education.
- Structured professional and personal development programs, including support to progress toward Chartered Engineer Status (CPEng).



WHAT OUR GRADUATES DO

ELECTRICAL

From managing high voltage electrical systems to understanding the nuances of our signalling control and command operations, our Graduate Electrical Engineers get to dive deep into the beating heart of our rail network.

ELECTRICAL ENGINEERING

Engage with an array of high voltage systems including 25kV overhead line equipment (OLE), 132/25kV traction power systems, 11/22kV non-traction power systems, and protection control, in addition to earthing and bonding systems.

SIGNALS

Learn how the PTA's signalling control and command systems are designed, configured, maintained and operated. This includes level crossings, wayside signalling and remote-control systems.



COMMUNICATIONS

Through involvement in the design, implementation, integration, and commissioning of major infrastructure projects, you will be introduced to various communications systems and assets including CCTV, AV passenger information, security, radio, fibre optics and transmission systems, and telephony.

OPERATIONAL TECHNOLOGY

Gain practical experience and exposure working on an integrated Operational Technology (OT) system, which encompasses hardware and software used by the PTA to monitor and control railway stations infrastructure assets, railway system equipment, traction power distribution, and security systems. PLCs, SCADA, RTUs, Business Access Control (BAS), Train Control System (Phoenix), and CCTV are examples of OT systems.

“Working at the PTA has opened up an entire career path to me in rail that I didn’t know existed. It’s given me countless opportunities to take on engineering challenges that contribute to a safer, more efficient railway for the local community – it’s rewarding!”

Kara Symes – Past Graduate Engineer (Electrical)



CIVIL

Connecting our communities is everything. Our Graduate Civil Engineers work across multiple teams to help plan, build and maintain the essential infrastructure that facilitates our world-class public transport network.

RAIL PLANNING

Assist with strategic network planning, demand forecasting and the development of operational concepts and infrastructure design. You will also learn how to plan the locations of new railway lines, extensions to existing lines, depots, stations, stowage and vertical transport solutions.

TRACK & STRUCTURES MAINTENANCE

You will have the opportunity to assist in the maintenance of tracks and structures. This involves inspecting, monitoring and recording asset conditions; scheduling and estimating works for maintenance and upgrades; as well as dealing with external parties requesting access to the rail reserve.

RAIL ENGINEERING

Working with project teams, you will assist with the engineering and design of new railway tracks, platforms, earthworks, drainage, railway structures, stations and train depots. You will acquire skills in freight access and interface management, as well as in engineering assurance functions.

PROJECT MANAGEMENT

You will contribute to program planning, scheduling, and budgeting for the construction of new works. You will also assist in the preparation and review of project documentation such as work methodologies, risk assessments and safety management plans. You may also be responsible for the creation, management or supervision of contracts, and will undertake site inspections when required.

FORGE A CAREER THAT LETS YOU DO BIG, IMPORTANT THINGS FOR THE GOOD OF YOUR COMMUNITY.



“What’s great about the PTA graduate program is the ability to rotate through various teams and branches. I gained such a diverse range of skills and knowledge, and ultimately found my passion. Your growth and development is important to the PTA.”

I always felt supported by my graduate coordinator and team managers. Even now, that hasn’t changed. Every day I face new challenges in my role alongside a great team that supports each other to overcome those challenges.”

Elena Marr – Past Graduate Engineer (Civil)





MECHANICAL



Charged with the task of developing practical solutions and innovative ways to incorporate modern technologies into our network, Graduate Mechanical Engineers get hands-on experience with our track, rollingstock, signalling technologies and overhead line equipment.

ROLLINGSTOCK MAINTENANCE & DESIGN

You will investigate system reliability, develop solutions to problems identified, and create designs which integrate modern technologies into our rollingstock assets.

TRACK & STRUCTURES MAINTENANCE

Assisting with the maintenance of track and structures, you will inspect, monitor and record asset conditions; schedule and estimate works for maintenance and upgrades; and liaise with external parties requesting access to the rail reserve.

SIGNALS

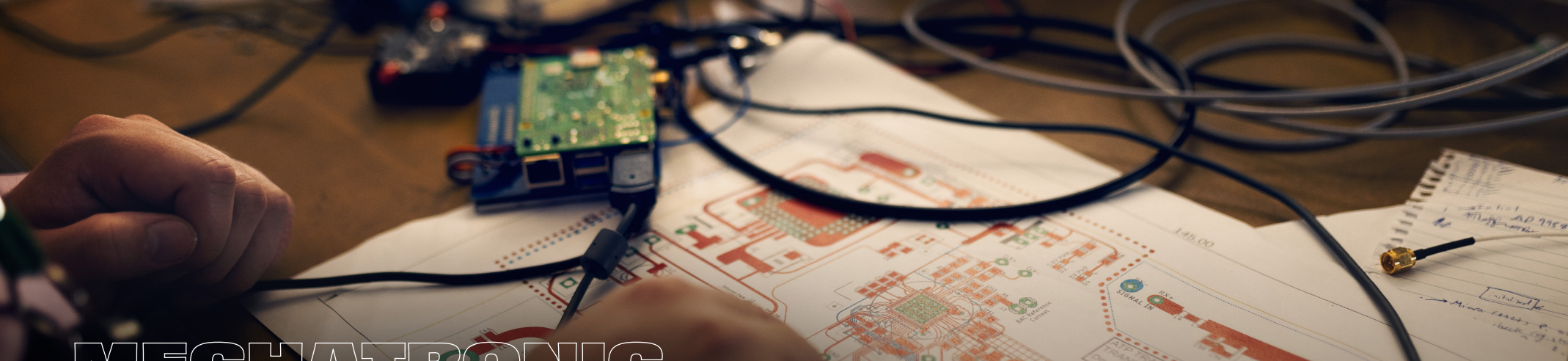
Learn how the PTA's signalling control and command systems are designed, configured, maintained, and operated. This includes level crossings, wayside signalling, and remote-control systems.

OVERHEAD LINE EQUIPMENT

You will have the opportunity to learn about and contribute to the renewal, refurbishment and maintenance of our electrified network, which includes 25kV OLE.



WESTERN AUSTRALIA'S GROWTH DEPENDS ON THE TRANSPORT TECHNOLOGIES WE DEVELOP. BE AT THE FOREFRONT OF OUR NEXT BIG INNOVATION.



MECHATRONIC



We think further down the line from today's technologies because we have to. Graduate Mechatronic Engineers apply their specialist system engineering knowledge to advance the PTA's adoption and effective use of modern technologies across projects big and small.

ROLLINGSTOCK MAINTENANCE & DESIGN

You will investigate system reliability problems and develop solutions to address problems. You will also develop designs to integrate modern technologies into our rollingstock assets.

ELECTRICAL ENGINEERING

Graduates will have the opportunity to rotate through two of the following branches: Electrical, Communications, Signals, and Operational Technology. These disciplines interface together and are the backbone to an efficient railway. You will work across small and large-scale projects, from design, implementation, maintenance asset renewal and new project perspectives.

MECHATRONIC-FOCUSSED PROJECT

As technology changes over time, our services adapt. You will utilise your system engineering knowledge to assist with interface discussions, testing schemas and design reviews; and will support the implementation of modern technologies with relevant asset owners and maintainers.



“Working at the PTA you will find yourself challenged with projects and opportunities that allow you to put your knowledge and skills to the test. You will be mentored and supported by supervisors who have been past graduates and know how to set you up for success. The dedicated graduate coordinator ensures you're never just an employee number and are constantly upskilling with workshops and training modules.”

Jeffrey Hamilton – Graduate Engineer (Mechatronics)

“The PTA Graduate Program supports, strengthens and stimulates inspiring young professionals. The combination of quality mentorship and meaningful project delegation has enabled me to apply my theoretical university knowledge in challenging real-world scenarios whilst being guided every step of the way.

An emphasis is placed on personal development which includes high quality interpersonal training and technical rail workshops.

I would highly recommend the PTA graduate program for those who are interested in not only making a difference in the community, but those who would like a kickstart in their professional journeys in public transportation.”

Theo Vander Heyden – Graduate Engineer (Mechatronics)

CYBER SECURITY & NETWORKING



The security, stability and efficiency of our IT systems are key to the PTA's ongoing provision of world-class transport services in an online world. Graduate Information Technologists rotate through a variety of business areas and choose one of three development specialisations.

NETWORK & SECURITY

Graduate Information Technologists support business as usual activities for the network and security team, including monitoring network activities, cyber threat hunting, management of PTA Security Incident Event Monitoring (SIEM) and associated projects.

GOVERNANCE & COMPLIANCE

You will support the IT Service Management functions through the change and configuration management processes. Complete audits and risk assessments, and manage document controls to ensure proper governance practices are in place. Apply architecture design principles to ensure appropriate delivery standards are aligned to divisional strategy of specific projects.

OPERATIONAL TECHNOLOGY

Support business as usual activities and projects within the operational technology space including CCTV (fixed and mobile), door access management, station lighting servers and other operational technology.

SERVICE DELIVERY

Support ongoing delivery of the PTA's online services and assist in projects covering corporate systems, storage and backups to ensure optimal performance.

DEVELOPMENT

Graduates choose one of three development specialisations: Business Intelligence, Application Development or Database Administration.

- Business Intelligence – develop and support data sources and reporting needs for the PTA's various business units.
- Application Development – develop applications which support the PTA at a corporate and operational level, including websites for the PTA, Transperth and Transwa brands.
- Database Administration – support our databases on oracle and MSSQL to ensure optimal performance of major PTA applications such as our Ticketing System, Objective and SmartRider.

ENVIRONMENT

We're invested in a bright future for WA, on and off the track. Environment Graduates contribute to the ongoing sustainability of PTA projects and operations through research, planning and advice that ensures our infrastructure serves Western Australians long into the future.

ENVIRONMENTAL SERVICES

As part of PTA's Environmental Services Branch, you will be part of a team that is motivated to drive positive environmental and social outcomes for current and future generations which succeeds by working safely, being curious and having fun. You will contribute to the planning, maintenance and operation of public transport services, as well as the construction of infrastructure projects. You will gain experience in environmental management systems, environmental planning and approvals, construction environmental management, contaminated land management, natural area management and geospatial mapping and analysis.



**APPLY FOR THE PTA
GRADUATE PROGRAM TODAY**

www.pta.wa.gov.au/careers



Get in touch

Telephone: (08) 9326 2909

Email: DevPrograms@pta.wa.gov.au

Find us on **LinkedIn**



**Public Transport
Authority**