



Senior Transport Analyst

Branch:	Transport Analytics and GIS
Directorate:	Urban Mobility
Position Number:	00025342
Classification:	Level 6
Physical Location:	Perth (William Street)
Award/Agreement:	Public Service Award & Public Sector CSA Agreement 2024

Our Purpose: *Empowering a Thriving Community*

The Department of Transport (DoT) together with Main Roads WA and the Public Transport Authority forms the Transport portfolio. DoT seeks to connect people and places to keep Western Australia moving towards a safer, healthier and more sustainable future.

Our Values:

Collaboration	<i>Working together, we get things done</i>
Wellbeing	<i>Looking after ourselves and supporting others</i>
Adaptability	<i>Always open to possibilities</i>
Accountability	<i>Taking ownership, we deliver</i>

DoT promotes a diverse workforce and embraces a high standard of equal opportunity, health and safety, and ethical practice. DoT is a values-based organisation committed to empowering a thriving community. Join us and work in a role where you can bring your best self to work and leave work having been seen and heard, and able to contribute meaningfully to the communities throughout Western Australia.

Overview of Directorate

The Urban Mobility Directorate exists to provide integrated transport strategy, policy, planning and programs to optimise the current and future use of the transport network for moving people in cities and major centres.



Overall Purpose of the Role

Undertakes research and data analytics and prepares advice on economic, financial, industry, transport, land-use and other context and statistical issues and trends relevant to transport and the government for the benefit of the Department, government and the WA community.

Work Description

- Undertakes complex analysis and evaluation of economic, financial, industry, transport, land-use, and other information relevant to all modes of transport, and provides reasoned advice on transport strategy, planning and policy issues.
- Undertakes analysis and evaluations of infrastructure and other transport investments, policy and legislative changes, and research projects, to determine the potential value for or effects on transport systems.
- Contributes to the development and application of appropriate analytical methodologies to assist Directorate staff in strategic planning, policy development, program planning and evaluation work, as required.
- Liaises with the Transport Forecasting and Transport Research and Foresight teams for technical input into projects, and to collaboratively develop recommendations.
- Supports the Manager Transport Analytics with delivery of the team's wider work program.
- Contributes to the development of transport systems databases to provide a basis for analysis across the portfolio.
- Builds effective working relationships across the Department and the portfolio, including promoting project outcomes to key stakeholders.
- Develops and maintains relationships with key stakeholders involved in researching transport systems policy and initiatives, including national bodies.
- Delivers timely and impactful outputs from analytics work including data visualisations and reporting.
- Supports relevant procurements of professional services and works collaboratively with suppliers, as required.
- Supports quality assurance activities.
- Supports efforts to communicate and promote Transport Analytics insights and project outcomes.
- Represents the Department on committees and at public and professional forums.
- Supervises, as required and mentors junior staff.
- Demonstrates a genuine commitment to and models, the Department's values.
- Undertakes other duties as required.



Work related requirements

The following criteria are to be applied within the context of this position, which includes alignment to the Department's values.

Criteria

ESSENTIAL:

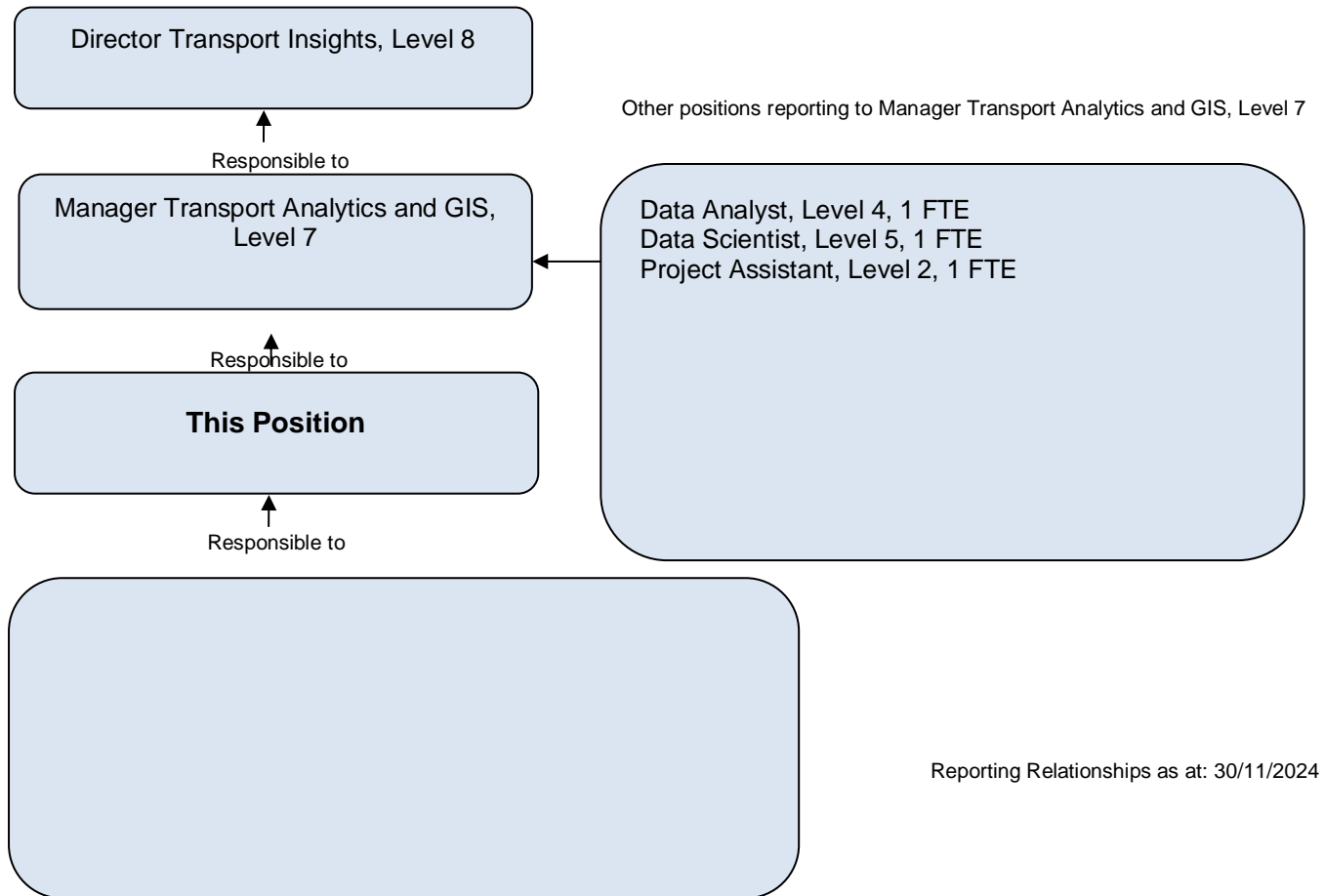
1. Significant experience in applying economic, financial, and/or other analytical techniques using data from a variety of sources and contexts.
2. Experience in or knowledge of traffic engineering and/or transport planning.
3. Role-models positive, inclusive and adaptive behaviours, supports and encourages peers, and aligns own work to strategic objectives.
4. Strong interpersonal skills including demonstrated ability to consult, collaborate, influence, and negotiate with stakeholders, simplifying complex technical concepts to suit the audience.
5. Demonstrated innovative and creative thinking to develop strategic solutions that shape and deliver positive outcomes.
6. Strong research and analytical skills, including ability to interpret complex data and present actionable insights.
7. Proven project and program management skills including successful management of timeframes, resources, and risks.

DESIRABLE:

1. A degree in geography, planning, economics, engineering, statistics, or a similar field.
2. Experience and skills in the use of Environmental Systems Research Institute (ESRI) software applications and associated web applications or equivalent GIS vendor applications.
3. Qualifications relevant to Spatial Science, Mapping Science or Cartography with eligibility for professional accreditation in Geospatial Council of Australia (GCA).



Reporting Relationships



Allowances/Special Conditions

- A current national police clearance certificate incorporating criminal and traffic convictions and infringements is required for this position.

Certification

The details contained in this document are an accurate statement of the duties, responsibilities and other requirements of the position.

**Executive Director
People and Culture**