



KIMBERLEY

Landscape Photos: Tourism Western Australia

Position Title

Position number: 200371

Aboriginal Recovery Engagement Officer

Regional Profile

WACHS Kimberley is the most northern health region of WACHS. The Kimberley region has approximately 200 Aboriginal communities, over 34 different Aboriginal language groups and 45 percent of the population are Aboriginal and/or Torres Strait Islander people. WACHS Kimberley consists of six hospitals, an inpatient mental health unit, three Community Directorates and a Corporate Office. WACHS Kimberley provides hospital, community health, public health, remote area health, community aged care, and mental health services across the region through a dedicated team of medical, nursing, Aboriginal health, allied health and support staff.

About the WA Country Health Service

Our Strategic Priorities



Our Values

Community

We live and work in country communities. We are invested in the health, wellness and viability of country communities and the vibrancy, diversity and future of country WA.

Compassion

We are inclusive, respectful, and considerate. We care deeply about the people in our care and country communities.

Quality

We provide safe, high-quality care, constantly striving to innovate, improve and achieve trust in our care.

Integrity

We bring honesty, collaboration and professionalism to everything that we do.

Equity

We are passionate about fairness in healthcare for all Western Australians, especially the most vulnerable and disadvantaged people and communities.

Curiosity

We continually enquire and seek to understand, using the best evidence, insight and research to improve care.

Our Vision

To be a global leader in rural and remote healthcare.

Our Mission

To deliver and advance high quality care for country WA communities.

Directorate overview

The Kimberley Mental Health and Drug Service provides specialist community mental health and alcohol and drug services to the Kimberley and acute in-patient psychiatric care for referred patients in the Kimberley region. The service aims to deliver a comprehensive range of high quality patient/client recovery focused mental health and alcohol and drug services to both the people in the Kimberley region.

Our Directorate actively supports and encourages diversity and inclusion across all occupational groups through the development and implementation of initiatives aimed at accessing and improving employment and mentoring opportunities for all people. Our strategies are located at www.wacountry.health.wa.gov.au

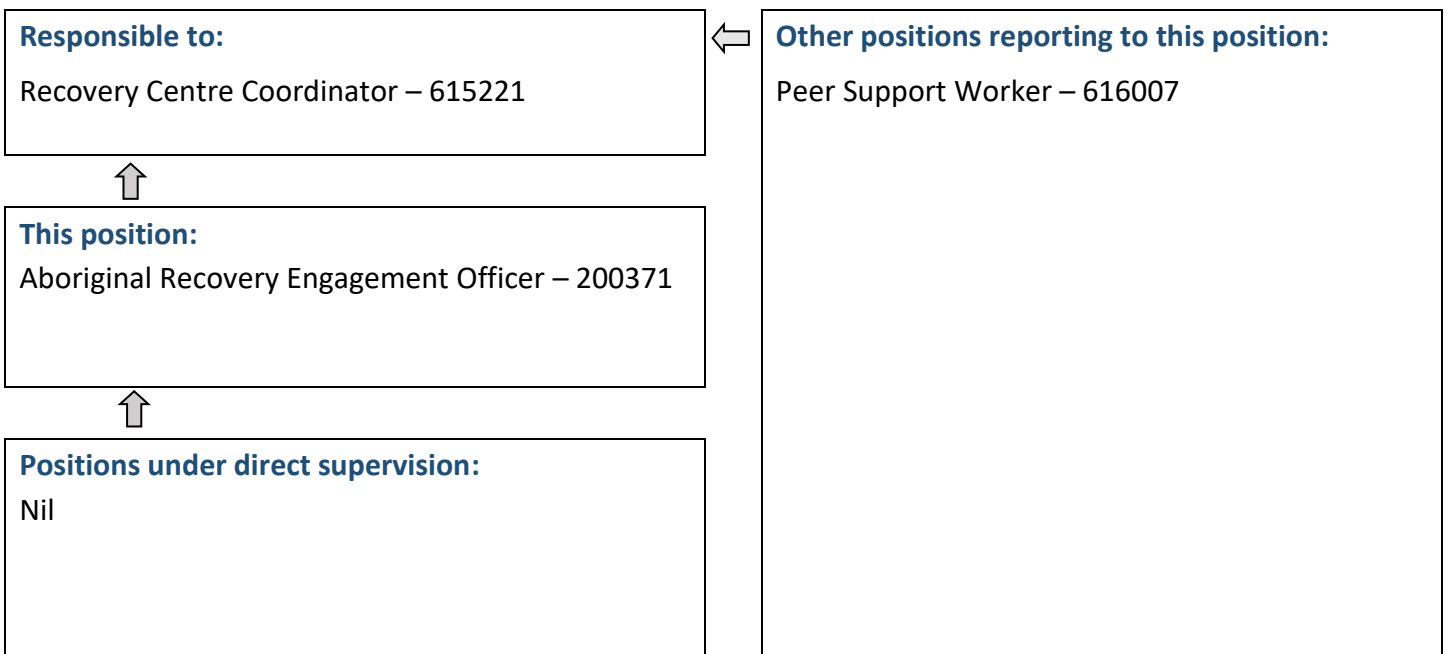
Position Details

Position Number:	200371	Registration Date:	15 September 2023
Classification:	HSO Level G5	Location:	Broome
Award / Agreement:	Health Salaried Officers Agreement		
Organisational Context:	Kimberley Mental Health and Drug Service (KMHDS)		

Position Overview

The Aboriginal Recovery Engagement Officer is responsible for coordinating, designing and delivering Recovery programmes, and for providing cultural expertise to those who deliver programmes at the Broome Community Recovery Centre, including community agencies.

Reporting Relationships



Key Duties/Responsibilities

1. CLINICAL

- 1.1. Provides a recovery and rehabilitation support role for clients of Kimberley Mental Health and Drug Services.
- 1.2. Assists with development and facilitation of Recovery focused groups and activities.
- 1.3. Provides mental health care, which is consistent with a holistic health model and promotes client's responsibility for their mental health.
- 1.4. Promotes effective working relationships and maintains lines of communication with the team, with other departments, health professionals and community agencies.
- 1.5. Assesses the specific need of individuals, families and the community, to advise Recovery Plan development relating to these specific needs.
- 1.6. Acts as a resource on issues relating to Aboriginal recovery based mental health.

2. EDUCATION

- 2.1. Contributes to planning, organisation and evaluation of the recovery service of KMHDS.
- 2.2. Participates in the supervision, support and training of students, other staff and caregivers as appropriate.
- 2.3. Provides cultural leadership for Broome Community Recovery Centre (BCRC).
- 2.4. Provides cultural supervision to those who deliver programmes at the BCRC, including community agencies.

3. PREVENTION & PROMOTION/COMMUNITY DEVELOPMENT

- 3.1. Provides mental health promotion and education to individuals, families and the community.
- 3.2. Participates in culturally appropriate mental health community development.
- 3.3. Coordinates, designs and delivers community responsive programmes based on recovery, co-design and co-production principles.

4. QUALITY ASSURANCE

- 4.1. Participates in ongoing evaluation of recovery programs and practice and participates in quality assurance projects.
- 4.2. Ensures adequate records and registers are kept for quality assurance, reporting, evaluation and research.

5. PERFORMANCE MANAGEMENT & STAFF DEVELOPMENT

- 5.1. Undergoes staff appraisal with Coordinator and sets goals for personal and professional growth.
- 5.2. Assists with performance appraisal programs and participates in in-service and ongoing professional development activities.
- 5.3. Undertakes activities to develop and maintain professional skills at an advanced level and participates in training programmes as required.

6. OTHER

- 6.1. Performs duties in accordance with relevant Occupational Safety and Health and Equal Opportunity Legislation.
- 6.2. Performs duties in accordance with Kimberley Mental Health and Drug Service Policies and Procedures.
- 6.3. Carries out other duties as required.



Work Related Requirements

The following criteria are to be read together with the Brief Summary of Duties and considered in the context of the WACHS Values.

Essential

- 1 Pursuant to Section 50(d) of the Equal Opportunities Act, the occupant of this position must be of Aboriginal descent.
- 2 High level interpersonal, oral and written communication skills, with the ability to effectively communicate with Aboriginal consumers and their family members who engage with mental health services.
- 3 Knowledge of mental health disorders and has an ability to apply this in their practice.
- 4 Knowledge of mental health community support systems with a focus on Recovery.
- 5 Ability to work independently with minimal supervision as well within a team environment.
- 6 Understanding of issues relating to Aboriginal people particularly related to Aboriginal families and communities of the Kimberley.
- 7 Current C Class drivers Licence and an ability and willingness to travel including overnight stays away from home.

Desirable

- 1 Tertiary degree qualification in health promotion, public health, education or social science and/or possession of or progress towards tertiary degree or post-graduate qualifications in related discipline.
- 2 Knowledge of or experience working with Aboriginal people impacted by mental health conditions and have an understanding of the related practical and emotional issues of working with Aboriginal consumers with comorbidity mental health /alcohol and drug disorders and unresolved trauma.
- 3 Current knowledge and commitment to Equal Opportunity, Disability Services and Occupational Safety and Health in all aspects of employment and service delivery.

Appointment Allowances and Pre-requisites

Where applicable – District Allowance, Annual Leave Travel Concession, one week additional annual leave for above the 26th parallel, airconditioning subsidy

Appointment is subject to:

- Provision of the minimum identity proofing requirements
- Successful Criminal Record Screening Clearance
- Successful Pre-Employment Health Assessment
- Successful WA Health Integrity Check
- Successful Working With Children Check
- Evidence of a current C or C-A Class driver's licence or other specialised licence class
- Ability to travel within the region as required including overnight stays

WA Country Health Service – KIMBERLEY

15 September 2023

REGISTERED

