



KIMBERLEY

Landscape Photos: Tourism Western Australia

## Position Title

Position number: 100009

# Senior Medical Imaging Technologist

## Regional Profile

WACHS Kimberley is the most northern health region of WACHS. The Kimberley region has approximately 200 Aboriginal communities, over 34 different Aboriginal language groups and 45 percent of the population are Aboriginal and/or Torres Strait Islander people. WACHS Kimberley consists of six hospitals, an inpatient mental health unit, three Community Directorates and a Corporate Office. WACHS Kimberley provides hospital, community health, public health, remote area health, community aged care, and mental health services across the region through a dedicated team of medical, nursing, Aboriginal health, allied health and support staff.

## About the WA Country Health Service

### Our Strategic Priorities



### Our Values

#### Community

We live and work in country communities. We are invested in the health, wellness and viability of country communities and the vibrancy, diversity and future of country WA.

#### Compassion

We are inclusive, respectful, and considerate. We care deeply about the people in our care and country communities.

#### Quality

We provide safe, high-quality care, constantly striving to innovate, improve and achieve trust in our care.

#### Integrity

We bring honesty, collaboration and professionalism to everything that we do.

#### Equity

We are passionate about fairness in healthcare for all Western Australians, especially the most vulnerable and disadvantaged people and communities.

#### Curiosity

We continually enquire and seek to understand, using the best evidence, insight and research to improve care.

### Our Vision

To be a global leader in rural and remote healthcare.

### Our Mission

To deliver and advance high quality care for country WA communities.

## Directorate overview

In the East Kimberley we provide contemporary, trauma informed health care to around 8000 people. There is a large indigenous population who reside both in the towns and the surrounding communities.

The healthcare in Kununurra and Wyndham is exceptional and diverse delivering a combination of emergency and inpatient care, surgical, outpatient and specialist care, medical imaging all working among an amazing team of Allied and Public health professionals.

The district boasts amazing tourist attractions including Purnululu (the Bungle Bungles), Lake Argyle and Mitchell Plateau among so many more locally known attractions that have to be seen to be believed.

Our Directorate actively supports and encourages diversity and inclusion across all occupational groups through the development and implementation of initiatives aimed at accessing and improving employment and mentoring opportunities for all people. Our strategies are located at [www.wacountry.health.wa.gov.au](http://www.wacountry.health.wa.gov.au)

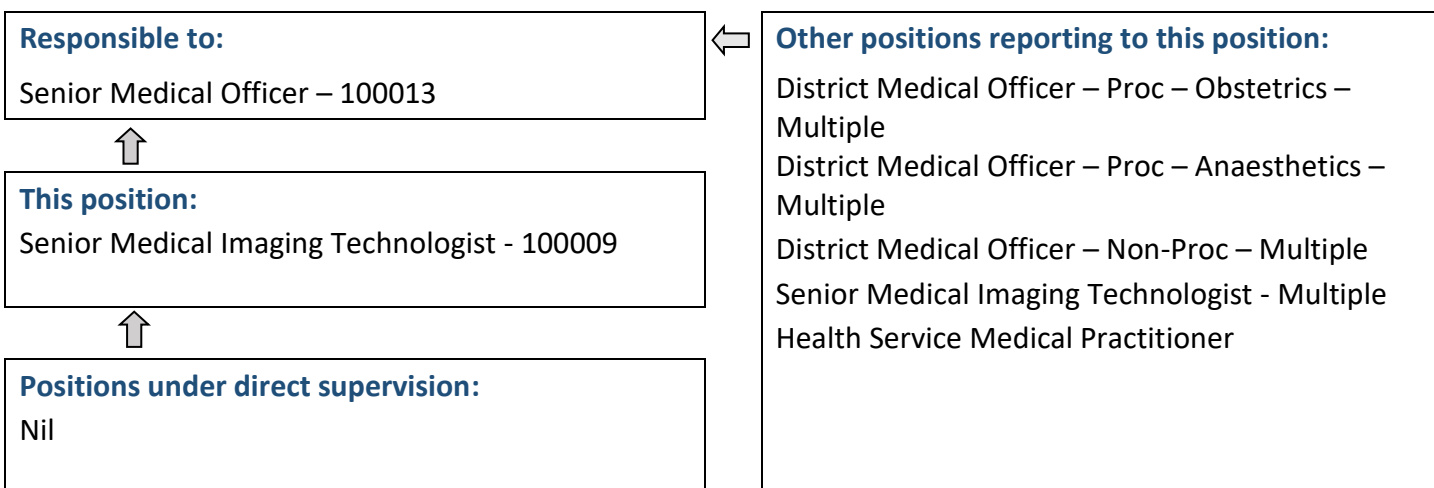
## Position Details

Position Number:	100009	Registration Date:	17 August 2023
Classification:	HSO Level P2	Location:	Kununurra
Award / Agreement:	Health Salaried Officers Agreement		
Organisational Context:	Kununurra, Wyndham, Halls Creek Health Services		

## Position Overview

Provide a quality diagnostic imaging (including CT Scanning) service at Kununurra and Wyndham Hospitals and as the X-ray Operator Support Medical Imaging Technologist (XOSMIT) monitors and supervises X-ray Operators.

## Reporting Relationships





## Statement of Duties

### 1. PROFESSIONAL/CLINICAL

- 1.1. Performs all diagnostic Medical Imaging Radiographic (including CT Scanning service) procedures as the Technologist solely responsible for the examination and in accordance with current MIT, DOH and other professional standard.
- 1.2. Responsible for the competent and efficient use of all imaging facilities including general, mobile x-ray equipment, processing systems and tele-radiology.
- 1.3. Provides outreach radiology services to Halls Creek and Wyndham.
- 1.4. Ensures that the integrity of each examination is maintained by correct selection of the appropriate procedures, safe use of ionising radiation confirmation of image quality and corrects image data recording in accordance with WACHS-Kimberley, DOH and Radiological Council policies and requirements.
- 1.5. Liaises with health service staff, Medical Practitioners and Radiologist to ensure an effective and client-focused service, assisting Radiologist and Medical Practitioners with fluoroscopy and special procedures where necessary.
- 1.6. Performs all procedures as requested by authorised referrers in accordance with the Radiation Safety Act 1975.
- 1.7. Prioritise the workload according to medical urgency and clinical demand.
- 1.8. Maintains appropriate quality improvement process of imaging apparatus and associated equipment through regular testing, maintenance and accurate data recording. This includes compliance with NATA Accreditation Standards.
- 1.9. Conforms to recognised international standards and levels in regard to radiation and chemical hazards.
- 1.10. Performs the duties and responsibilities of Radiation Safety Officer under Regulation 18 of the Radiation Safety Act 1975.
- 1.11. Ensure all imaging equipment is operating to specific standards.
- 1.12. Provides and after hours "ON CALL" service, as is prescribed by WACHS policy.
- 1.13. Ensure patient dignity, privacy and security is maintained at all times.

### 2. TRAINING AND DEVELOPMENT/X-RAY OPERATOR SUPPORT SERVICES

- 2.1. Responsible for Medical Imaging Services performed by all accredited X-Ray operators at nominated hospitals and maintains appropriate records.
- 2.2. Provides professional, technical support and training to all allocated X-ray operator sites and ensure compliance with the Radiation Safety Act 1975, by undertaking site visits, performing tutorials and refresher courses.
- 2.3. Ensures all sites maintain Quality improvement programs for all imaging apparatus and processing facilities and ensures radiographs are of a consistently high standard.
- 2.4. Uses current, professional accepted standards of practice to constructively assess the performance of self and others to ensure the development of MIT skills and knowledge in accordance with Kununurra Health Service and WACHS – Kimberley strategic goals.
- 2.5. Extends own professional knowledge and skills relating to clinical practice, management and professional interest.
- 2.6. Participates in performance management programme.
- 2.7. Co-ordinates the development and implementation of evidence based competencies for the medical imaging department.
- 2.8. Co-ordinates and reviews the orientation program for new MIT's including x-ray operators to ensure comprehensive and effective induction.



- 2.9. Attends in-service programmes.
- 2.10. Supervises and teaches assigned students within the medical imaging department.

### **3. MANAGEMENT/QUALITY IMPROVEMENT**

- 3.1. Manages the business and office functions of the Medical Imaging Service including organising sessions for visiting specialist and liaising with Radiological Clerical staff.
- 3.2. Prepares budget submission for the replacement and upgrading of equipment within the Medical Imaging Department.
- 3.3. Requisitions and maintains Medical Imaging consumable stock items using cost-efficient methods and approved ordering procedures.
- 3.4. Maintains patient examination data for records, accounting, statistical or research purposes.
- 3.5. Produces and reports monthly statistics to DOH and Radiology service provider liaising with Radiological Clerical staff
- 3.6. Maintains equipment to appropriate operational, OS&H and infection control standards.
- 3.7. Maintains and reviews Medical Imaging departmental policy and procedure manual in accordance with DOH operational instructions, MHS requirements and ACHS standards.
- 3.8. Ensures development, implementation and regular review of appropriate MIT quality improvement protocols and projects in conjunction with the QI co-ordinator.
- 3.9. Ensure active participation of the medical imaging department in the ACHS Equip, NATA and other accreditation programs when required.

### **4. OTHER**

- 4.1. Other duties as directed by line manager or their delegate.
- 4.2. Participates in approved research and evaluation projects.



## Selection Criteria

The following criteria are to be read together with the Brief Summary of Duties and considered in the context of the WACHS Values.

### Essential

- 1 Tertiary qualification in Medical Imaging and eligible for registration with the Medical Radiation Practice Board of Australia and licensing with the Radiological Council of WA.
- 2 Demonstrated knowledge of appropriate radiographic procedures including CT Scanning knowledge and skills, and patient care principles.
- 3 Effective interpersonal, oral and written communication skills.
- 4 Ability to work as a sole practitioner and provide an after-hours availability service.
- 5 Understanding of radiation film bandage monitoring and the Radiation Safety Act and its Regulations in the provision of Medical Imaging Services in Western Australia.
- 6 Demonstrated problem solving and innovation, ability to diagnose and resolve simple equipment faults and failures.
- 7 Current C Class drivers Licence and an ability and willingness to travel including overnight stays away from home.

### Desirable

- 1 Current knowledge and commitment to Equal Opportunity, Disability Services and Occupational Safety and Health in all aspects of employment and service delivery.
- 2 Previous experience with x-ray operator support program requirements.
- 3 Previous experience with MIT and/or client based quality improvement programmes.
- 4 Willingness to participate in the country ultrasound program.

## Appointment Allowances and Pre-requisites

Where applicable – District Allowance, Annual Leave Travel Concession, one week additional annual leave for above the 26th parallel, airconditioning subsidy.

Appointment is subject to:

- Evidence of current registration with the Medical Radiation Practice Board of Australia and licensing with the Radiological Council of WA must be provided prior to commencement
- Provision of the minimum identity proofing requirements
- Successful Criminal Record Screening Clearance
- Successful Pre-Employment Health Assessment
- Successful WA Health Integrity Check
- Evidence of a current C or C-A Class driver's licence
- Ability to travel within the region as required including overnight stays

WA Country Health Service – KIMBERLEY

17 August 2023

REGISTERED

