



Transport Modelling Officer

Branch:	Strategic Transport Modelling
Directorate:	Urban Mobility
Position Number:	00027457
Classification:	Level 4
Physical Location:	Perth (William Street)
Award/Agreement:	Public Service Award & Public Sector CSA Agreement 2022

Our Purpose: *Empowering a Thriving Community*

The Department of Transport (DoT) together with Main Roads WA and the Public Transport Authority forms the Transport portfolio. DoT seeks to connect people and places to keep Western Australia moving towards a safer, healthier and more sustainable future.

Our Values:

Collaboration	<i>Working together, we get things done</i>
Wellbeing	<i>Looking after ourselves and supporting others</i>
Adaptability	<i>Always open to possibilities</i>
Accountability	<i>Taking ownership, we deliver</i>

DoT promotes a diverse workforce and embraces a high standard of equal opportunity, health and safety, and ethical practice. DoT is a values-based organisation committed to empowering a thriving community. Join us and work in a role where you can bring your best self to work and leave work having been seen and heard, and able to contribute meaningfully to the communities throughout Western Australia.

Overview of Directorate

The Urban Mobility Directorate exists to provide integrated transport strategy, policy, planning and programs to optimise the current and future use of the transport network for moving people in cities and major centres.



Overall Purpose of the Role

Undertakes a role in the operation and provision of advice, day-to-day management of the Department's transport modelling and economic evaluation activities with key internal/external stakeholders.

Work Description

- Assists other modellers in providing advice and services to the Department's internal and external stakeholders on strategic transport modelling and economic evaluation issues.
- Analyses land use and transport scenarios using the Department's transport and cost-benefit analysis and other modelling tools.
- Assist in the maintenance and development of the Department's transport and economic evaluation models including the currency and integrity of the land use, transport network and economic input data and improvements to the algorithms and macros in the models.
- Collects, analyses and maintains transport modelling data.
- Undertakes production runs, analyses model outputs, presents model results.
- Provides input into the transport modeling and economic evaluation studies undertaken for the Department by consultants.
- Participates as a member on project teams.
- Undertakes other duties as required.



Work related requirements

The following criteria are to be applied within the context of this position, which includes alignment to the Department's values.

Criteria

ESSENTIAL:

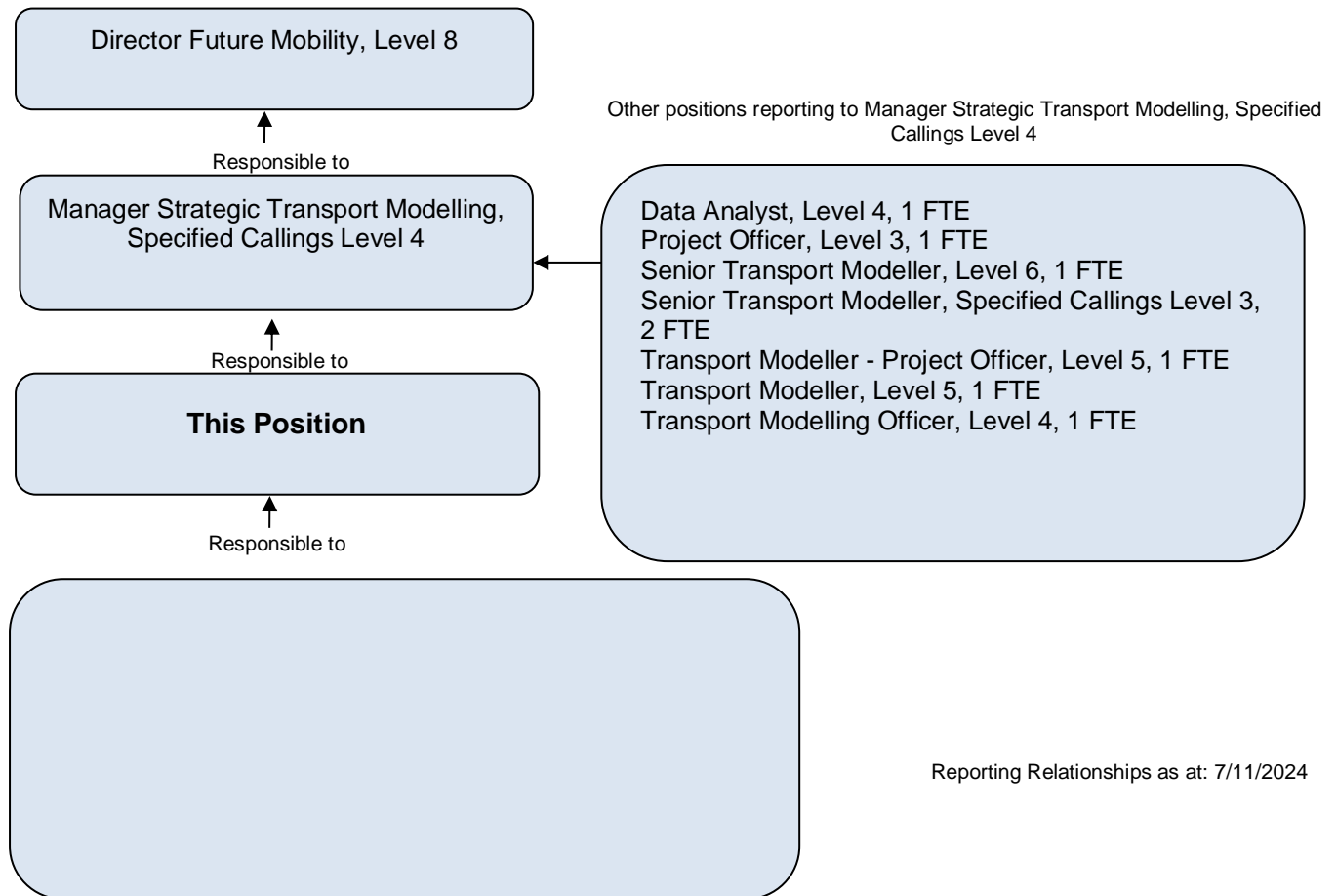
1. A degree in engineering, mathematics, economics, econometrics and/ or relevant experience in a related field.
2. Experience in transport and/or economic modelling.
3. Knowledge of traffic engineering and/or transport planning.
4. Sound analytical and research skills, including innovative and creative problem-solving capabilities.
5. Well-developed written and oral communication skills with the ability to prepare technical reports and deliver presentations.
6. Demonstrated ability to work within a team to deliver high quality outcomes.

DESIRABLE:

1. Experience in using an appropriate strategic modelling package (e.g., Cube or Emme).



Reporting Relationships



Allowances/Special Conditions

- A current national police clearance certificate incorporating criminal and traffic convictions and infringements is required for this position.

Certification

The details contained in this document are an accurate statement of the duties, responsibilities and other requirements of the position.

**Executive Director
People and Culture**