



KIMBERLEY

Landscape Photos: Tourism Western Australia

Position Title

Position number: 613508

Senior Medical Imaging Technologist

Regional Profile

WACHS Kimberley is the most northern health region of WACHS. The Kimberley region has approximately 200 Aboriginal communities, over 34 different Aboriginal language groups and 45 percent of the population are Aboriginal and/or Torres Strait Islander people. WACHS Kimberley consists of six hospitals, an inpatient mental health unit, three Community Directorates and a Corporate Office. WACHS Kimberley provides hospital, community health, public health, remote area health, community aged care, and mental health services across the region through a dedicated team of medical, nursing, Aboriginal health, allied health and support staff.

About the WA Country Health Service

Our Strategic Priorities



Our Values

Community

We live and work in country communities. We are invested in the health, wellness and viability of country communities and the vibrancy, diversity and future of country WA.

Compassion

We are inclusive, respectful, and considerate. We care deeply about the people in our care and country communities.

Quality

We provide safe, high-quality care, constantly striving to innovate, improve and achieve trust in our care.

Integrity

We bring honesty, collaboration and professionalism to everything that we do.

Equity

We are passionate about fairness in healthcare for all Western Australians, especially the most vulnerable and disadvantaged people and communities.

Curiosity

We continually enquire and seek to understand, using the best evidence, insight and research to improve care.

Our Vision

To be a global leader in rural and remote healthcare.

Our Mission

To deliver and advance high quality care for country WA communities.

Directorate overview

In the East Kimberley we provide contemporary, trauma informed health care to around 8000 people. There is a large indigenous population who reside both in the towns and the surrounding communities.

The healthcare in Kununurra and Wyndham is exceptional and diverse delivering a combination of emergency and inpatient care, surgical, outpatient and specialist care, medical imaging all working among an amazing team of Allied and Public health professionals.

The district boasts amazing tourist attractions including Purnululu (the Bungle Bungles), Lake Argyle and Mitchell Plateau among so many more locally known attractions that have to be seen to be believed.

Our Directorate actively supports and encourages diversity and inclusion across all occupational groups through the development and implementation of initiatives aimed at accessing and improving employment and mentoring opportunities for all people. Our strategies are located at www.wacountry.health.wa.gov.au

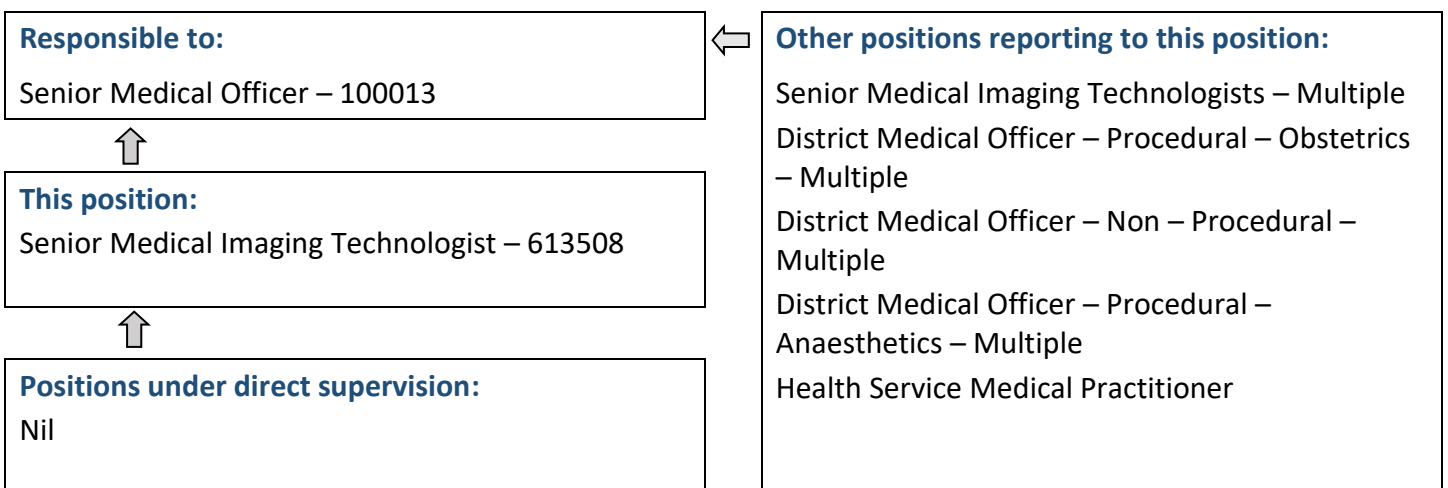
Position Details

Position Number:	613508	Registration Date:	31 October 2024
Classification:	HSO Level P2	Location:	Kununurra
Award / Agreement:	Health Salaried Officers Agreement		
Organisational Context:	Kununurra, Wyndham and Halls Creek Health Service		

Position Overview

Coordinates and provides Medical Imaging Technology and Sonography clinical expertise to the Kununurra/ Wyndham/Halls Creek Health Service and Remote Communities to ensure appropriate planning, management, accountability and delivery of these services and programs for the East Kimberley region.

Reporting Relationships



Key Duties/Responsibilities

1. PROFESSIONAL

- 1.1. Perform routine ultrasound examinations as required.
- 1.2. Perform other medical imaging procedures (CT, Plain and Mobile Radiography Mobile II) when not required for ultrasound cases.
- 1.3. Evaluate the adequacy of the examination and the need for further investigations.
- 1.4. Assist the Radiologist with complex scanning techniques and the special ultrasound procedures.
- 1.5. Advise and consult on the prioritising of bookings in line with clinical indications.
- 1.6. Perform daily equipment checks.
- 1.7. Be responsible for the welfare, privacy and security of the patient during the examination.
- 1.8. Participate in after-hours Radiography on-call services.
- 1.9. Establish and/or review ultrasound protocols and related procedures.
- 1.10. Monitor trends in the examination requests from referrers and clinical centres with a view to establishing new Diagnostic Services.
- 1.11. Evaluate and advise on new techniques and equipment prior to introduction within the Health Service.
- 1.12. Participate in the Quality Assurance Management activities of the Health Service.
- 1.13. To comply with NATA standards and deliver services in line with the Diagnostics Imaging Standards and the Standards of Practice for Diagnostic and Interventional Radiology.

2. SUPERVISION

- 2.1. As required, provide supervision and training of Medical Imaging Technology students and trainee Sonographers.
- 2.2. As required, provide supervision and assistance to the staff of the Medical Imaging Department.

3. MAINTENANCE

- 3.1. Maintain a quality control program of ultrasound and related equipment.
- 3.2. Ensure the ultrasound equipment is kept in good order.
- 3.3. Diagnose equipment faults and liaise with service personnel for maintenance and the repair of faults.

4. OTHER

- 4.1. Other duties as directed by line manager or their delegate.



Work Related Requirements

The following criteria are to be read together with the Brief Summary of Duties and considered in the context of the WACHS Values.

Essential

- 1 Tertiary Qualification in Medical Imaging and eligible for registration with the Medical Radiation Practice Board of Australia and licensing with the Radiological Council of WA.
- 2 Evidence supporting demonstrated experience in providing a wide range of ultrasound examinations including general, Obstetric, small parts, musculoskeletal and vascular.
- 3 Understanding of NATA regulatory standards and a commitment to achieve these through clinical practice.
- 4 Demonstrated ability to work unsupervised and within a team environment.
- 5 Demonstrated problem solving and interpersonal skills.
- 6 Ability to diagnose simple equipment faults and failures.
- 7 Be committed to Radiation Safety.
- 8 Current C Class driver's licence and an ability and willingness to travel across region.

Desirable

- 1 An ASAR accredited qualification in sonography and listed on the Australian Sonographer Accreditation Registry (ASAR) as an accredited medical sonographer in the relevant field.
- 2 Experience in, or willingness to provide supervision and training of Medical Imaging Technologist in ultrasound skills.
- 3 An understanding of Aboriginal culture.
- 4 Current knowledge and commitment to Equal Opportunity, Disability Services and Occupational Safety and Health in all aspects of employment and service delivery.

Appointment Allowances and Pre-requisites

Where applicable – District Allowance, Annual Leave Travel Concession, one week additional annual leave for above the 26th parallel, airconditioning subsidy

Appointment is subject to:

- Evidence of current registration with the Medical Radiation Practice Board of Australia and licensing with the Radiological Council of WA must be provided prior to commencement
- Provision of the minimum identity proofing requirements
- Successful Criminal Record Screening Clearance
- Successful Pre-Employment Health Assessment
- Successful WA Health Integrity Check
- Successful Working With Children Check
- Evidence of a current C or C-A Class driver's licence or other specialised licence class
- Ability to travel within the region as required including overnight stays

WA Country Health Service – KIMBERLEY

31 October 2024

REGISTERED

