



# Job Description Form



Community | Compassion | Quality



Integrity | Equity | Curiosity



**Position Title**

Position number: **Various**

**Social Worker**

## WA Country Health Service

The WA Country Health Service (WACHS) is the largest country health system in Australia and one of the biggest in the world, providing health services to approximately half a million people, including 45,000 Aboriginal people, over a vast area of two and a half million square kilometers.

We are the primary provider of public health services across the Kimberley, Pilbara, Midwest, Wheatbelt, Goldfields, South West and Great Southern.

## About the WA Country Health Service

### Our Strategic Priorities



### Our Values

#### Community

We live and work in country communities. We are invested in the health, wellness and viability of country communities and the vibrancy, diversity and future of country WA.

#### Compassion

We are inclusive, respectful, and considerate. We care deeply about the people in our care and country communities.

#### Quality

We provide safe, high-quality care, constantly striving to innovate, improve and achieve trust in our care.

#### Integrity

We bring honesty, collaboration and professionalism to everything that we do.

#### Equity

We are passionate about fairness in healthcare for all Western Australians, especially the most vulnerable and disadvantaged people and communities.

#### Curiosity

We continually enquire and seek to understand, using the best evidence, insight and research to improve care.

### Our Vision

To be a global leader in rural and remote healthcare.

### Our Mission

To deliver and advance high quality care for country WA communities.

|                               |                          |                               |
|-------------------------------|--------------------------|-------------------------------|
| Position Title: Social Worker | Position Number: Various | Classification: HSO Level P-1 |
|-------------------------------|--------------------------|-------------------------------|

## Social Work Services at WA Country Health Service

WA Country Health Service Social Workers deliver health services that support the health and well-being of individuals and communities in rural and remote Western Australia. The range of health services provided covers emergency and hospital services, population and community health, Aboriginal health, mental health, cancer services, aged care and telehealth services. We are committed to partnering with communities and other service providers, utilising innovative technology and maintaining a skilled social work workforce to bring excellent services close to home for country people.

Across the state we have

- 6 large regional health campuses located at country regional centres
- 15 district health campuses that act as hubs for sub-regional health district services
- 46 small hospitals, 43 health centres and nursing posts
- 24 community-based mental health services, and 4 dedicated inpatient mental health services
- 178 facilities where population health teams are based
- Residential aged care facilities.

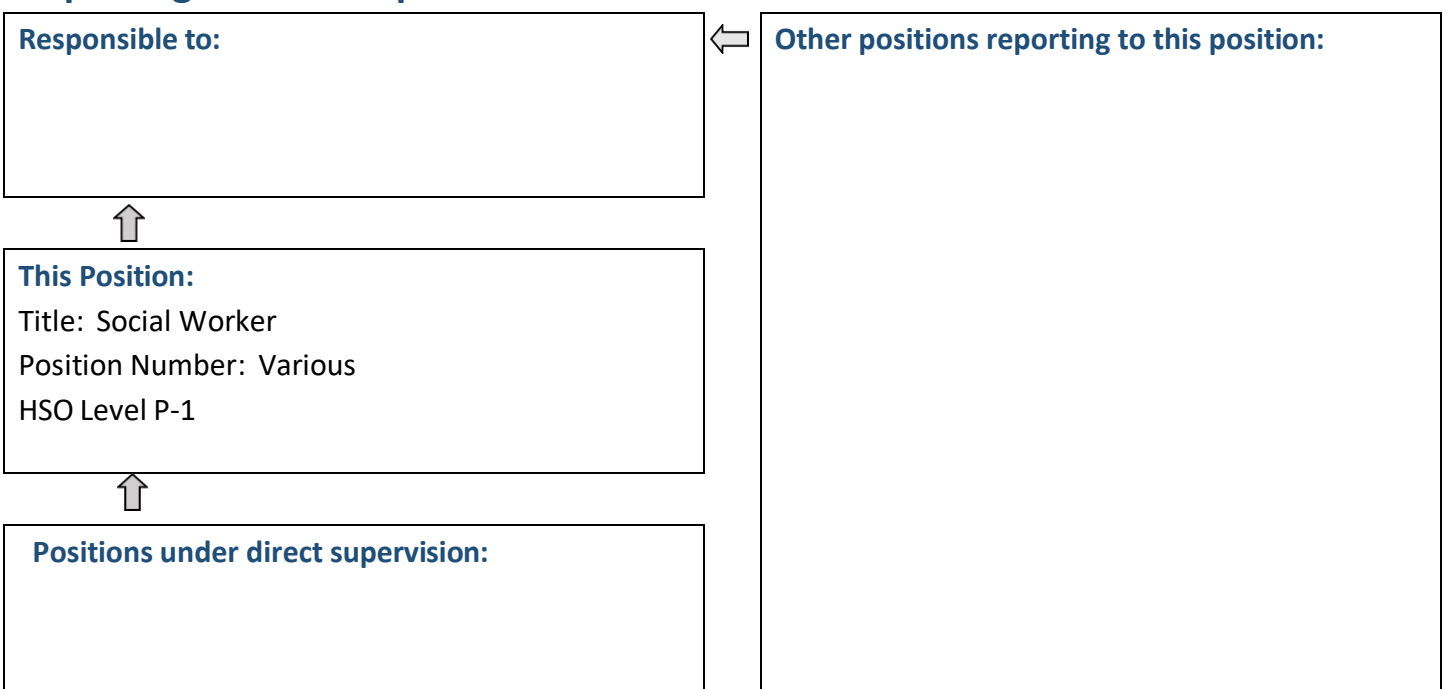
## Position Details

|                         |                                    |                    |                |
|-------------------------|------------------------------------|--------------------|----------------|
| Position Number:        | Various                            | Registration Date: | September 2023 |
| Classification:         | HSO Level P-1                      | Location:          | Negotiable     |
| Award / Agreement:      | Health Salaried Officers Agreement |                    |                |
| Organisational Context: | Social Work Services - Various     |                    |                |

## Position Overview

Provides a Social Work service including assessment, treatment, evaluation and planning to a designated regional caseload of inpatient, outpatient and community clients as part of the WA Country Health Service provision.

## Reporting Relationships



## Key Duties/Responsibilities

### 1. Clinical

- 1.1 Carry out assessment of referred clients.
- 1.2 Plan and carry out individual/group treatment programs.
- 1.3 Observe, assess, record and report on the progress of clients as appropriate.
- 1.4 Participate in case conferences as required.
- 1.5 Liaise with other staff and agencies to coordinate client treatment objectives.
- 1.6 Participate in multi-disciplinary service approach for all clients as appropriate.
- 1.7 Supervise social work students, work experience students and volunteers as appropriate.
- 1.8 Participate in community education programs.
- 1.9 Participate in weekend roster and/or out-of-hours acute treatment as required.

### 2. Administration/Professional

- 2.1 Maintain reliable documentation/record keeping and data management in accordance with Departmental and professional guidelines.
- 2.2 Consult with senior staff on techniques of social work.
- 2.3 Contribute to the evaluation the effectiveness of treatment and service delivery through regular quality assurance activities.
- 2.4 Attend staff meetings and participate in staff in-services as required.
- 2.5 Assist in the planning of service delivery including budgetary and resource requirements.
- 2.6 Participate in continuing self-education, including professional primary health and health promotion skill development in line with performance management outcomes.

### 3. Other

- 3.1 Undertake other duties as directed/required.



## Work Related Requirements

The following criteria are to be read together with the Brief Summary of Duties and considered in the context of the WACHS Values.

### Essential

1. Tertiary qualification in Social Work and eligible for full membership of the Australia Association of Social Workers (AASW).
2. Demonstrated knowledge of varied methods of assessment, treatment and evaluation within Social Work practice.
3. Demonstrated effective communication and interpersonal skills (verbal and written).
4. Demonstrated ability to function independently or as member of a multidisciplinary team.
5. Ability to manage a clinical caseload and time effectively.

### Desirable

1. Understanding of rural and remote community living, and the potential impact of this on Social Work practice.
2. Demonstrated knowledge and understanding of cultural issues and social determinants particularly relating to Aboriginal Health.
3. Knowledge of current legislative obligations for Equal Opportunity, Disability Services and Occupational Safety and Health and how these impact on employment and service delivery.

## Appointment Pre-requisites

Appointment is subject to:

- Evidence of eligibility for full membership of the Australian Association of Social Workers must be provided prior to commencement
- Provision of the minimum identity proofing requirements.
- Successful Criminal Record Screening clearance
- Successful Pre-Employment Health Assessment
- Successful WA Health Integrity Check
- Successful Working With Children Check

WA Country Health Service –  
Central Office

29 September 2023  
REGISTERED

