



Job Description Form



GOLDFIELDS

Landscape Photos: Tourism Western Australia

Position Title

Position number: 615845

Nurse Practitioner

Regional Overview

The Goldfields region of the WA Country Health Service covers the Goldfields-Esperance Region of Western Australia. The region is located in the south eastern corner of Western Australia and covers 770,488 sq km (including offshore islands). The WA Country Health Service Goldfields consists of two main health campuses located in Kalgoorlie & Esperance, and three smaller hospitals located in Laverton, Leonora and Norseman. The Goldfields is a culturally rich region with a number of Aboriginal communities spread out across the region, 16 distinct Aboriginal language groups and an Aboriginal population that represents 12.3 per cent of our total population, with 1 in 10 people, on average, identifying as Aboriginal – this in comparison to the state average of 3.6 per cent. The region supports a wide range of industry, including mining, agriculture, aquaculture and tourism. Mining is the predominant sector in the central and northern parts of the region, with a well-established agricultural sector in the south.

About the WA Country Health Service

Our Strategic Priorities



Our Values

Community

We live and work in country communities. We are invested in the health, wellness and viability of country communities and the vibrancy, diversity and future of country WA.

Compassion

We are inclusive, respectful, and considerate. We care deeply about the people in our care and country communities.

Quality

We provide safe, high-quality care, constantly striving to innovate, improve and achieve trust in our care.

Integrity

We bring honesty, collaboration and professionalism to everything that we do.

Equity

We are passionate about fairness in healthcare for all Western Australians, especially the most vulnerable and disadvantaged people and communities.

Curiosity

We continually enquire and seek to understand, using the best evidence, insight and research to improve care.

Our Vision

To be a global leader in rural and remote healthcare.

Our Mission

To deliver and advance high quality care for country WA communities.

Directorate Overview

This portfolio provides the region with nursing leadership and governance. It also supports the following regional services: cancer care coordination, infection control, palliative care, renal services. Administratively it also has a regional focus on nursing recruitment, safety, quality and risk management.

Our Directorate actively supports and encourages diversity and inclusion across all occupational groups through the development and implementation of initiatives aimed at accessing and improving employment and mentoring opportunities for all people. Our strategies are located at www.wacountry.health.wa.gov.au

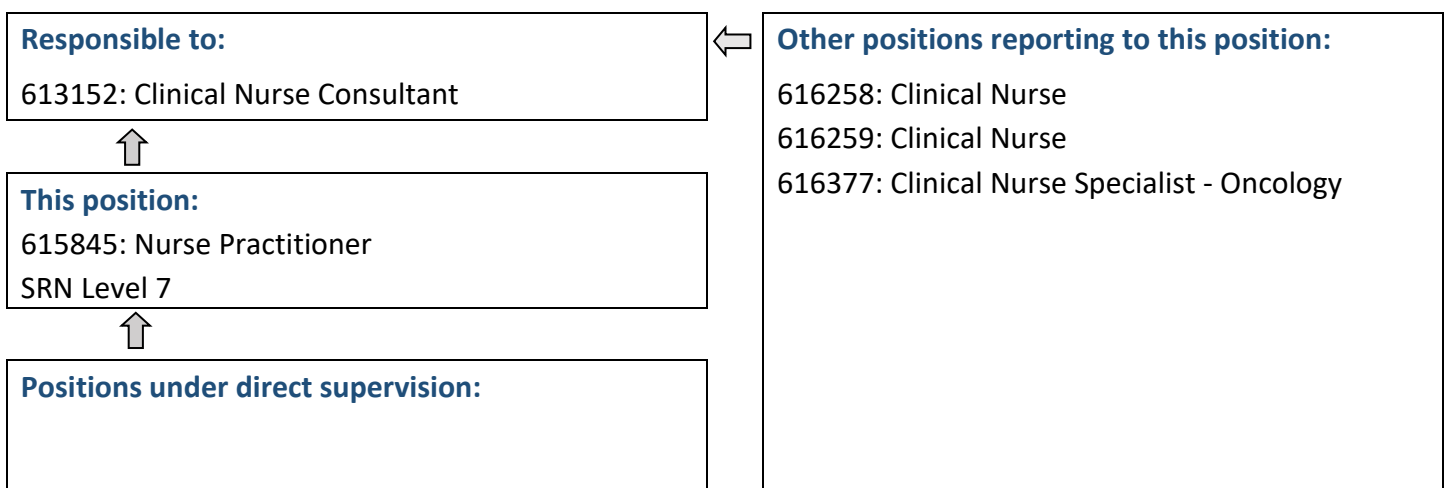
Position Details

Position Number:	615845	Registration Date:	January 2022
Classification:	SRN Level 7	Location:	Kalgoorlie
Award / Agreement:	Nurses and Midwives Agreement		
Organisational Context:	Regional		

Position Overview

Provides advanced nursing assessment, diagnosis, care and intervention to patients and families within the scope of practice of a Nurse Practitioner in Cancer Services. Provides high-level clinical nursing, leadership, management and governance within the WA Country Health Service (WACHS), including the operational management of cancer nursing services and programs in partnership with key internal and external stakeholders. Provides support to the Executive Director of Nursing and Midwifery, area executive and nursing executive in developing and implementing WACHS strategic directions including progressing the health reform strategy, continuous quality improvement and improving patient safety.

Reporting Relationships



Key Duties/Responsibilities

1. CLINICAL

- 1.1. Maintains their competence to practice in accordance with national competency standards for the Nurse Practitioner as described by the Nurses & Midwives Board of Australia.
- 1.2. Provide advanced and autonomous expert care to patients and families in accordance with Nurse Practitioner legislation and functions by:
 - Patient assessment and diagnosis
 - Prescribing medications
 - Ordering and analysing pathology and radiological tests
 - Referring patients to other Health Professionals
 - Undertaking patient care on referral from Health Professionals
- 1.3. Manage patient conditions according to approved Clinical Practice Guidelines within own scope of practice.
- 1.4. Ensure nursing compliance with relevant Federal/State legislation, DoH and WACHS policies, and local procedures as they pertain to the delivery of health services.
- 1.5. Provide resources to clinical staff to assume currency and relevance of nursing policy, practice and procedures.
- 1.6. Work collaboratively to support medical, nursing and allied health colleagues in the performance of their clinical duties.
- 1.7. Manage patients and documents with regard to risk management principles.
- 1.8. Refer appropriate medical problems to senior medical officer.

2. LEADERSHIP AND MANAGEMENT

- 2.1. Promote effective clinical leadership.
- 2.2. Provides cancer nursing advice and consultancy to the Regional Director Nursing & Midwifery relating to cancer nursing in WACHS.
- 2.3. Develop and implement evidenced based Clinical Practice Guidelines and procedures for Nurse Practitioners.
- 2.4. Develop and promote positive relations with clients, peers, medical staff, allied health colleagues and members of the general public.
- 2.5. Participate in peer review and case review procedures as determined by the Nurse Director.
- 2.6. Contribute to Health Service workforce development programs and seek opportunities for ongoing professional education.
- 2.7. Participate in relevant committees and special projects.
- 2.8. Contribute to staff and patient safety systems that meet contemporary clinical standards and OS&H requirements.
- 2.9. Liaise with other agencies and organisations as required. Promote cost-effective use of materials.

3. CONTINUING QUALITY IMPROVEMENT

- 3.1. Provide leadership in coordinating and implementing quality improvement activities specific to the nurse practitioner role.
- 3.2. Participate in Clinical Practice Improvement Programs and Clinical Governance Initiatives as relevant to practice.
- 3.3. Identify opportunities to improve and promote evidence based clinical practice.
- 3.4. Ensure nursing services are provided in a manner sensitive to, and appropriate for, people of Indigenous and other cultural backgrounds.

4. OTHER

- 4.1. Other duties as directed by the Regional Director Nursing & Midwifery.



Work Related Requirements

The following criteria are to be read together with the Brief Summary of Duties and considered in the context of the WACHS Values.

Essential

1. Eligible for registration in the category of Nurse Practitioner by the Nursing and Midwifery Board of Australia.
2. Demonstrated advanced clinical experience in the assessment and treatment of illness and injury related to the role.
3. Well-developed clinical problem-solving skills including conceptual and analytical ability.
4. Excellent interpersonal, verbal and written communication skills including negotiation skills.
5. Sound knowledge of relevant legislative and health regulating Acts including legislative obligations.
6. Experience in quality improvement application in meeting patient's needs and its relationship to strategic development.
7. Eligible for and / or in possession of a current C or C-A class driver's licence.

Desirable

1. Demonstrated understanding of key cultural issues in a rural environment.
2. Current knowledge and commitment to Equal Opportunity in all aspects of employment and service delivery.

Appointment Pre-requisites

Appointment is subject to:

- Evidence of current registration by Nursing and Midwifery Board of Australia must be provided prior to commencement
- Provision of the minimum identity proofing requirements
- Successful Criminal Record Screening Clearance
- Successful Pre-Employment Health Assessment
- Successful WA Health Integrity Check
- Successful Working With Children Check
- Evidence of a current C or C-A Class driver's licence or other specialised licence class

WA Country Health Service –
GOLDFIELDS

18 January 2022

REGISTERED
Job Description Form

