



Job Description Form



GREAT SOUTHERN
Landscape Photos: Tourism Western Australia

Position Title

Position number: 613305

Clinical Nurse Specialist - McGrath Foundation

Regional Profile

The Great Southern is situated on Western Australia’s south coast and covers 39,007 square kilometres. The Great Southern is unmatched for the scale, diversity and accessibility of its natural attractions, including rugged coastline, white sandy beaches, forests, wildflowers and the highest peaks in southern Western Australia. The region boasts robust tourism and primary production industries which provide the backbone of the economy. The town of Albany is central to WACHS Great Southern and is located alongside the historically rich and picturesque Port of Albany. The Regional Health Service offers one main health facility at Albany which is widely supported by a network of smaller Multi-Purpose Service (MPS) sites at Bremer Bay, Denmark, Gnowangerup, Jerramungup, Katanning, Kojonup, Plantagenet, Ravensthorpe and Tambellup.

About the WA Country Health Service

Our Strategic Priorities



Our Values

Community

We live and work in country communities. We are invested in the health, wellness and viability of country communities and the vibrancy, diversity and future of country WA.

Compassion

We are inclusive, respectful, and considerate. We care deeply about the people in our care and country communities.

Quality

We provide safe, high-quality care, constantly striving to innovate, improve and achieve trust in our care.

Integrity

We bring honesty, collaboration and professionalism to everything that we do.

Equity

We are passionate about fairness in healthcare for all Western Australians, especially the most vulnerable and disadvantaged people and communities.

Curiosity

We continually enquire and seek to understand, using the best evidence, insight and research to improve care.

Our Vision

To be a global leader in rural and remote healthcare.

Our Mission

To deliver and advance high quality care for country WA communities.

Position Title: Clinical Nurse Specialist - McGrath Foundation	Position Number: 613305	Classification: SRN Level 2
---	-------------------------	-----------------------------

Directorate overview

This directorate provides leadership, clinical governance advice, information and guidance on professional and clinical nursing and midwifery practice, policy and process in the Great Southern. The Regional Director Nursing & Midwifery works with the wider nursing and midwifery team to promote and develop the skills knowledge and abilities of Great Southern country nursing and midwifery professions, building a sustainable advanced skill workforce that ensures the WACHS values are embedded in care delivery.

The directorate welcomes innovation seeking new methods to improve safe quality care delivery, supported by policy and standards of practice that enhance clinical outcomes for the community.

Our Directorate actively supports and encourages diversity and inclusion across all occupational groups through the development and implementation of initiatives aimed at accessing and improving employment and mentoring opportunities for all people. Our strategies are located at www.wacountry.health.wa.gov.au

Position Details

Position Number:	613305	Registration Date:	27 March 2024
Classification:	SRN Level 2	Location:	Albany Health Campus
Award / Agreement:	Nurses and Midwives Agreement		
Organisational Context:	Nursing & Midwifery – Cancer Services		

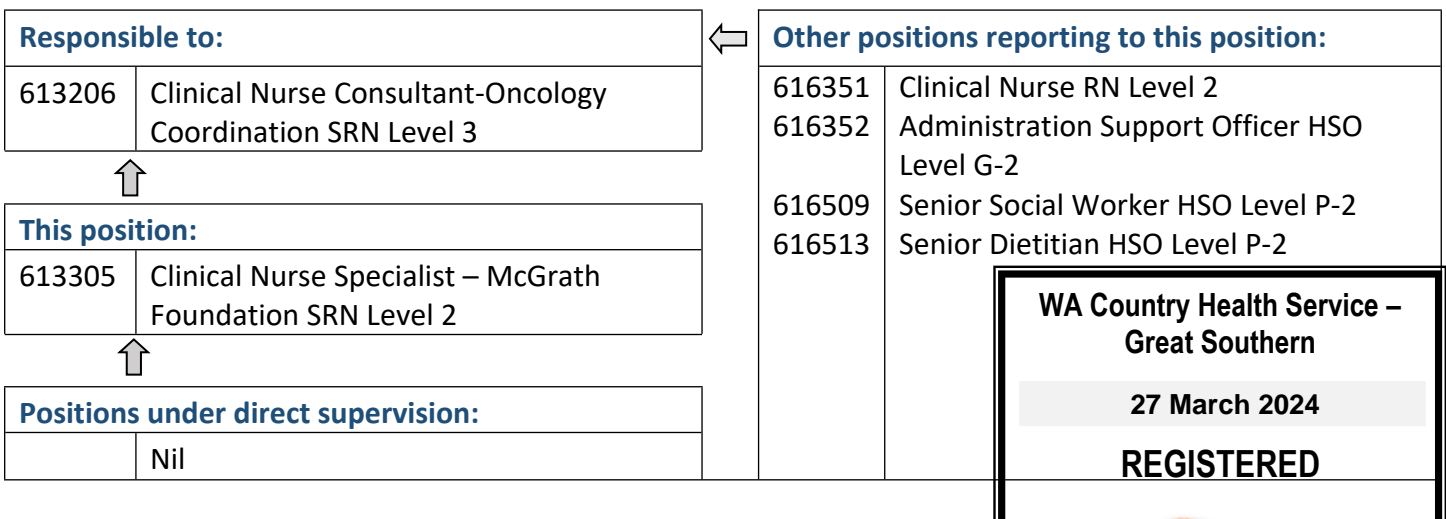
Position Overview

The objective of the Clinical Nurse Specialist- McGrath Foundation position, funded by the McGrath Foundation under the Breast Cancer Nurses Initiative is to provide advanced, complex clinical care, leadership and development and enhancement of specialist services for people presenting with breast cancer. The position will facilitate innovative evidence-based practice, in accordance with clinical practice guidelines and the McGrath Model of Care.

Key responsibilities include:

- Acts as a clinical expert in breast cancer and is a resource person to patients, families and staff
- Provides clinical expertise, case management and coordinates appropriate patient centred care as per Optimal Care Pathway for people with breast cancer in the Great Southern Region.
- Demonstrates leadership and role modelling facilitating development of evidence based clinical practice
- Promotes maintenance of clinical standard setting and monitoring, policy development and change management as required

Reporting Relationships



Position Title: Clinical Nurse Specialist - McGrath Foundation	Position Number: 613305	Classification: SRN Level 2
---	-------------------------	-----------------------------

Key Duties/Responsibilities

1. **Application of Advanced and Metastatic Breast Cancer Knowledge and Skills**
 - 1.1. Integrate the role of Breast Cancer Nurse into current patient care pathways.
 - 1.2. Provides advanced and complex patient care within breast cancer care protocols and McGrath Foundation Model of Care.
 - 1.3. Initiates and analyses research to determine clinical best practice; initiates, implements and evaluates best practice activities that support the delivery of appropriate clinical breast care in cancer within the region.
 - 1.4. Develops innovative techniques for complex problem solving for cancer services within the region.
 - 1.5. Develops, implements and promotes evidence-based standards and policies that are compliant with relevant professional, industrial and legislative requirements for the region.
 - 1.6. Provide leadership in the coordination and implementation of quality improvement activities.
 - 1.7. Use effective change management strategies to improve practice within the region.
2. **Promotion of Multidisciplinary Care**
 - 2.1. Leads and manages breast care nursing services in collaboration with the the Cancer Nurse Coordinator.
 - 2.2. Establishes a working relationship and works collaboratively with multidisciplinary treatment team members in the regional and metropolitan areas.
 - 2.3. Promotes the service within the region.
 - 2.4. Maintains excellence in interpersonal skills and use of leadership to guide appropriate patient care and service delivery.
 - 2.5. Maintaining strong communication with network of Breast Care Nurses and Cancer Nurse Coordinators.
 - 2.6. Promotes and facilitates a multidisciplinary team approach to decision making.
3. **Facilitation of Client-Focused Support and Treatment**
 - 3.1. Provide case management, information and support to breast cancer patients and their families and significant others.
4. **Commitment to Maintenance of Professional Standards**
 - 4.1. Maintain a high standard of professionalism and participates in self-development.
5. **Act as a Breast Cancer Resource**
 - 5.1. Provides clinical leadership to medical, nursing, and allied health professionals regarding care of the patient with breast cancer within the region.
 - 5.2. Develops, implements and evaluates education and training programs related to the area of breast cancer.
 - 5.3. Provide clinical information, statistics and reports as required by the Regional Director of Nursing and Midwifery and McGrath Foundation.
 - 5.4. Acts as a resource for local health professionals, providing information, education and guidance when required.
 - 5.5. Assist with the development of business cases and strategies to facilitate effective continued service provision in conjunction with the Regional Director of Nursing and Midwifery.
 - 5.6. Contribute to the formulation of staffing profiles, according to analysis of clinical cancer needs.
 - 5.7. Operate within the allocated/ available budget for cancer services.
6. **Other**
 - 6.1. Other duties related to the provision of breast cancer care as directed by the Clinical Nurse Consultant – Oncology Coordinator and Regional Director, Nursing & Midwifery Undertake other duties as directed.

WA Country Health Service –
Great Southern

27 March 2024

REGISTERED



Work Related Requirements

The following criteria are to be read together with the Brief Summary of Duties and considered in the context of the WACHS Values.

Essential

1. Eligible for registration in the category of Registered Nurse by the Nursing & Midwifery Board of Australia.
2. Demonstrated experience in working effectively and independently within a multidisciplinary health care team and independently.
3. Demonstrated leadership and clinical knowledge in the provision of nursing care for patients with metastatic breast cancer.
4. Demonstrated high level interpersonal and communication (written & verbal) skills.
5. Demonstrated well-developed analytical and problem solving skills.
6. Demonstrated high level of organisational and time management skills.
7. Extensive knowledge and application of quality improvement, research and best practice principles.
8. Eligible for/or in possession of a current C or C-A Class drivers licence.

Desirable

1. Possession of or significant progression toward the attainment of a post graduate qualification in area of speciality.
2. Understanding of preceptoring, orientation, clinical teaching programs and basic counselling skills.
3. Current knowledge and commitment to Equal Opportunity in all aspects of employment and service delivery.
4. Demonstrated computer skills.

Appointment Pre-requisites

Appointment is subject to:

- Evidence of current registration by the Nursing and Midwifery Board of Australia must be provided prior to commencement
- Provision of the minimum identity proofing requirements
- Successful Criminal Record Screening Clearance
- Successful Pre-Employment Health Assessment
- Successful WA Health Integrity Check

WA Country Health Service –
Great Southern

27 March 2024

REGISTERED

