



KIMBERLEY

Landscape Photos: Tourism Western Australia

Position Title

Position number: 200487

Clinical Nurse

Regional Profile

WACHS Kimberley is the most northern health region of WACHS. The Kimberley region has approximately 200 Aboriginal communities, over 34 different Aboriginal language groups and 45 percent of the population are Aboriginal and/or Torres Strait Islander people. WACHS Kimberley consists of six hospitals, an inpatient mental health unit, three Community Directorates and a Corporate Office. WACHS Kimberley provides hospital, community health, public health, remote area health, community aged care, and mental health services across the region through a dedicated team of medical, nursing, Aboriginal health, allied health and support staff.

About the WA Country Health Service

Our Strategic Priorities



Our Values

Community

We live and work in country communities. We are invested in the health, wellness and viability of country communities and the vibrancy, diversity and future of country WA.

Compassion

We are inclusive, respectful, and considerate. We care deeply about the people in our care and country communities.

Quality

We provide safe, high-quality care, constantly striving to innovate, improve and achieve trust in our care.

Integrity

We bring honesty, collaboration and professionalism to everything that we do.

Equity

We are passionate about fairness in healthcare for all Western Australians, especially the most vulnerable and disadvantaged people and communities.

Curiosity

We continually enquire and seek to understand, using the best evidence, insight and research to improve care.

Our Vision

To be a global leader in rural and remote healthcare.

Our Mission

To deliver and advance high quality care for country WA communities.

Directorate overview

Broome Regional Health Campus is the Regional Hospital for the Kimberley, comprising of an Emergency Department which includes 8 centrally monitored bays, 3 consulting rooms and 1 quick care room, 3 bed Emergency Short Stay Unit (ESSU), 4 bed High Dependency Unit (HDU), Outpatient Department provides 7 consulting rooms for salaried and visiting Medical Specialists, Operating Theatre with a 6 bed Same Day Surgical Unit, 25 acute bed Medical Surgical Ward, 8 bed Paediatric unit, including 3 cots in Level 2 Nursery, 8 bed Maternity unit, offering a Midwifery Group Practice service. Medical Support includes Pharmacy, Medical Imaging to provide Xray's, CT Scans and Sonography, with Allied Health services providing Physiotherapy, Speech Pathology and Occupational Therapy.

Broome Regional Health Campus is supported by other directorates such as Kimberley Mental Health Drug Service, Kimberley Population Health Unit and Kimberley Aged Care Services.

Our Directorate actively supports and encourages diversity and inclusion across all occupational groups through the development and implementation of initiatives aimed at accessing and improving employment and mentoring opportunities for all people. Our strategies are located at www.wacountry.health.wa.gov.au

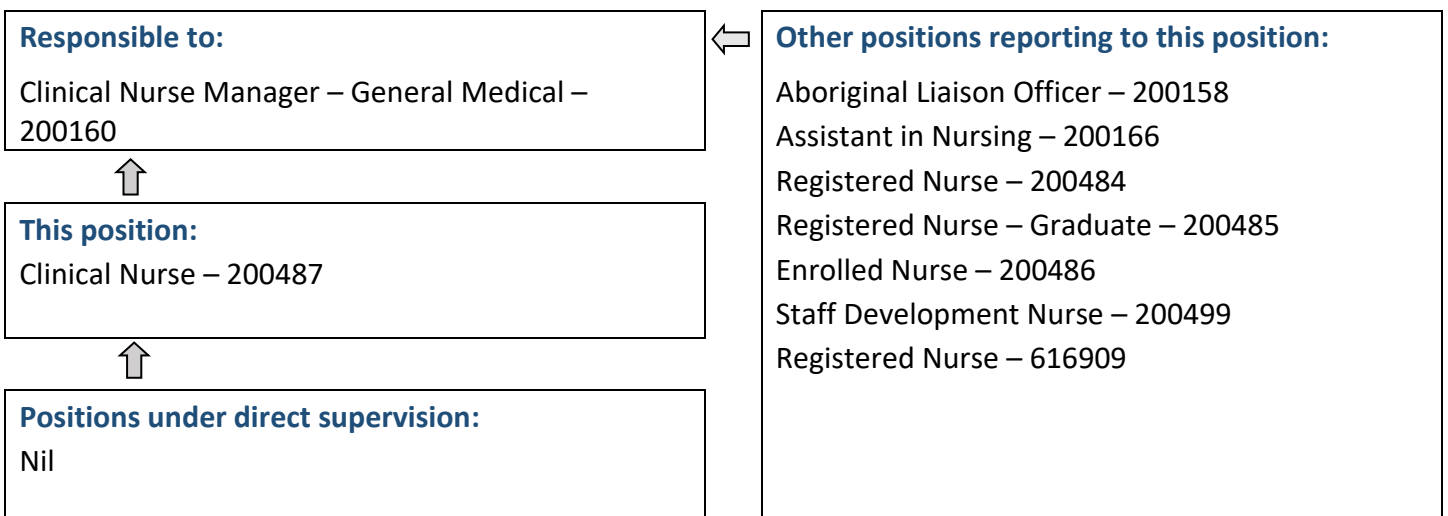
Position Details

Position Number:	200487	Registration Date:	22 June 2023
Classification:	RN Level 2	Location:	Broome
Award / Agreement:	Nurses and Midwives Agreement		
Organisational Context:	Nursing		

Position Overview

The primary responsibility of the Clinical Nurse is to manage, coordinate and deliver competent nursing care for patients, using leadership and advanced clinical nursing skills and knowledge relevant to the General Medical department. Acts as a clinical resource and provides advanced clinical supervision and support for registered nurses, enrolled nurses, and assistants in nursing. Provides support, direction, orientation and education to staff and patients. Acts as a role model in the provision of holistic care. Assists the Clinical Nurse Manager in all areas of unit management.

Reporting Relationships



Key Duties/Responsibilities

1. CLINICAL

- 1.1. Maintains their competence to practice in accordance with national competency standards for the Registered Nurse as determined by the Nursing and Midwifery Board of Australia.
- 1.2. Provides an advanced level of individual case management to a specific group of patients and accepts accountability for own standards of nursing care.
- 1.3. Performs the role of clinical expert for the unit providing professional advice and assistance in relation to clinical standards and practice, in conjunction with the Clinical Nurse Manager.
- 1.4. Assists the Clinical Nurse Manager with forward planning for the unit to support the achievement of unit, hospital, regional and WA Country Health Service objectives.
- 1.5. Coordinates the nursing care and management of a specific area on a shift-by-shift basis.
- 1.6. Provides a leadership role in multidisciplinary services to ensure a high standard of health care delivery.
- 1.7. Identifies patient education needs and implements appropriate teaching, including coordination of patient education programs.
- 1.8. Provides education activities including but not limited to orientation, preceptorship and unit-based education and training in relation to clinical practice.
- 1.9. Acts as an advocate for patient and families and collaborates with them and member of the health care team to achieve health goals.
- 1.10. Ensures all documentation complies with National Standards and provides an accurate medico-legally sound record of each care episode.
- 1.11. Initiates improvement and research programs in conjunction with others to improve the unit or hospital health care service.
- 1.12. Completes performance management of designated nursing personnel.
- 1.13. Accountable for the safe, efficient, and effective use of resources.

2. OTHER DUTIES

- 2.1. Other duties as requested.



Work Related Requirements

The following criteria are to be read together with the Brief Summary of Duties and considered in the context of the WACHS Values.

Essential

- 1 Eligible for registration in the category of Registered Nurse by the Nursing and Midwifery Board of Australia.
- 2 Demonstrated advanced nursing skills within area of practice.
- 3 Demonstrated advanced skills in planning, coordination, and decision-making, within relevant practice setting.
- 4 Demonstrated well-developed communication and interpersonal skills.
- 5 Demonstrated incorporation of quality and risk management within practice.
- 6 Demonstrated well-developed team leadership and mentorship skills including evidenced of conflict resolution and negotiation skills.
- 7 Commitment to own ongoing education and teaching in area of expertise.

Desirable

- 1 Possession of or progression towards an appropriate post-graduate qualification.
- 2 Knowledge of current health issues and the organisational culture of rural health care.
- 3 Current knowledge and commitment to Equal Opportunity, Disability Services and Occupational Safety and Health in all aspects of employment and service delivery.

Appointment Allowances and Pre-requisites

Where applicable – District Allowance, Annual Leave Travel Concession, one-week additional annual leave for above the 26th parallel, air conditioning subsidy

Appointment is subject to:

- Evidence of current registration by the Nursing and Midwifery Board of Australia must be provided prior to commencement
- Provision of the minimum identity proofing requirements
- Successful Criminal Record Screening Clearance
- Successful Pre-Employment Health Assessment
- Successful WA Health Integrity Check
- Successful Working with Children Check

WA Country Health Service – KIMBERLEY

22 June 2023

REGISTERED

