



Job Description Form

Community | Compassion | Quality

Integrity | Equity | Curiosity

Position Title

Position number: Various

Enrolled Nurse

WA Country Health Service Agency Overview

The WA Country Health Service has a strong network of public hospitals, health services and nursing posts located across rural and remote Western Australia. Our core business is the provision of quality, accessible health services to people from large regional centres to those in small remote communities.

Our service spans across an area of more than 2.5 million square kilometres, from Kalumburu in the Kimberley to Albany in the Great Southern and through the Goldfields to the South Australian boarder.

About the WA Country Health Service

Our Strategic Priorities



Our Values

Community

We live and work in country communities. We are invested in the health, wellness and viability of country communities and the vibrancy, diversity and future of country WA.

Compassion

We are inclusive, respectful, and considerate. We care deeply about the people in our care and country communities.

Quality

We provide safe, high-quality care, constantly striving to innovate, improve and achieve trust in our care.

Integrity

We bring honesty, collaboration and professionalism to everything that we do.

Equity

We are passionate about fairness in healthcare for all Western Australians, especially the most vulnerable and disadvantaged people and communities.

Curiosity

We continually enquire and seek to understand, using the best evidence, insight and research to improve care.

Our Vision

To be a global leader in rural and remote healthcare.

Our Mission

To deliver and advance high quality care for country WA communities.

Position Title: Enrolled Nurse	Position Number: Various	Classification: EN Level 1 - 4
--------------------------------	--------------------------	--------------------------------

Regional overview

The Nursing and Midwifery Directorate delivers care that is extraordinary in every way; ensures access for all; develops and retains nurses and midwives as competent stewards of health's precious resources; engages in partnerships that sustain the health of our communities; seizes opportunities to innovate and utilise technology for the benefit of those in our care; and of utmost importance, fosters workplaces that enable nurses and midwives to achieve their fullest potential.

WA Country Health Service actively supports and encourages diversity and inclusion across all occupational groups through the development and implementation of initiatives aimed at accessing and improving employment and mentoring opportunities for all people. Our strategies are located at www.wacountry.health.wa.gov.au

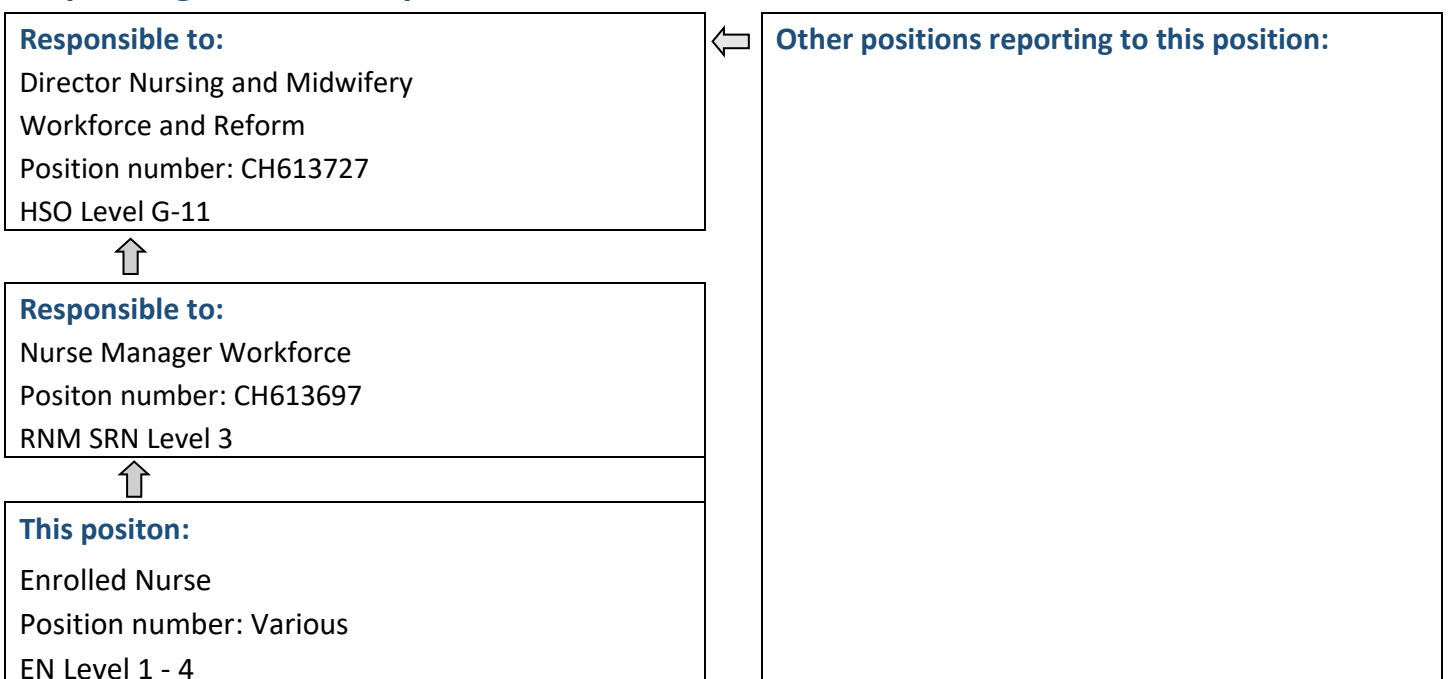
Position Details

Position Number:	Various	Registration Date:	October 2023
Classification:	Enrolled Nurse	Location:	Various
Award / Agreement:	Enrolled Nurses, Assistants in Nursing and Health Workers Agreement		
Organisational Context:	Nursing and Midwifery		

Position Overview

Responsible for the assessment, planning and implementation of evidence-based consumer-centred nursing care in accordance with the nursing care plan under the delegation of the Registered Nurse. The role is to provide nursing care for patients within the scope of practice of an Enrolled Nurse.

Reporting Relationships



Key Duties/Responsibilities

1. Clinical

- 1.1. Complies with registration requirements of the Nursing and Midwifery Board of Australia (NMBA) and practices in accordance with the NMBA standards for practice for the Enrolled nurse.
- 1.2. Be responsible and accountable for the safety and quality of nursing care through assessment, planning, implementation, facilitation and evaluation of care across the continuum.
- 1.3. Recognise own level of competence and scope of practice and consult with the Registered Nurse any changes in patients' health status and/or when nursing care requires expertise beyond their scope.
- 1.4. Undertake patient and family education to provide appropriate information in relation to treatment, procedures and ongoing care.
- 1.5. Uses technology in collaboration with the Registered nurse to improve practice, enhance learning and patient care, including telehealth platforms.

2. Governance, Safety and Quality

- 2.1. Actively participates in improvement and research programs in conjunction with others to improve the unit or hospital healthcare service.
- 2.2. Participates in unit based decision-making and supports the achievement of unit, hospital, regional and WA Country Health Service Objectives
- 2.3. Be accountable for the safe, efficient and effective use of resources, including assisting with forward planning of the unit.
- 2.4. Understand and complies with digital health legislation and policy.

3. Education and Training

- 3.1. Promotes education activities including but not limited to unit-based education activities preceptorship and orientation.
- 3.2. Collaborates with the Registered nurse in utilising digital health platforms in partnership with patients and carers to support culturally appropriate care and informed decision-making.

4. Other

- 4.1. Other duties as required.



Work Related Requirements

The following criteria are to be read together with the Brief Summary of Duties and considered in the context of the WACHS Values.

Essential

1. Eligible for registration in the category of Enrolled Nurse by the Nursing and Midwifery Board of Australia
2. Demonstrated clinical knowledge and delivery of evidence-based nursing and care within the relevant practice setting.
3. Demonstrated ability to function as a team member within a multidisciplinary environment.
4. Demonstrated effective communication (written and verbal) and interpersonal skills; including negotiation, problem solving and conflict resolution skills.
5. Demonstrated incorporation of quality and risk management within practice.
6. Demonstrated digital capability across clinical systems which contribute to the provision of quality care.

Desirable

1. Possession of or progression towards further qualification in area of Anaesthetic nursing
2. Knowledge of current health issues and the organisational culture of rural health services
3. Current knowledge and commitment to Equal Opportunity, Disability Services and Occupational Safety & Health in all aspects of employment and service delivery

Appointment Pre-requisites

Appointment is subject to:

- Evidence of current Registration by the Nursing and Midwifery Board of Australia must be provided prior to commencement.
- Provision of the minimum identity proofing requirements
- Successful Criminal Record Screening Clearance
- Successful Pre-Employment Health Assessment (including vaccination status)
- Successful WA Health Integrity Check
- Successful Working with Children Check
- Successful Aged Care Criminal Record Clearance – if applicable for working area
- Evidence of a current C or C-A Class driver's licence or other specialised licence class
- Ability to travel within the region

WA Country Health Service –
Central Office

31 October 2023
REGISTERED

