



HSS Registered

# Painter

## Position Details

Position Number: CG001477  
Classification: EBS Level 5  
Agreement: Engineering and Building Services Agreement  
Directorate: Procurement, Infrastructure and Contract Management  
Department: Facilities Management  
Location: North Metropolitan Health Service

## Reporting Relationships

This position reports to:

CG005515	Painting Supervisor	HSO G-6
----------	---------------------	---------

Positions under direct supervision:

Nil

### Primary Purpose of the Role

Maintains a high-quality environment for patients, staff, and sites uses by carrying out all painting and maintenance works for all plant, equipment, services, facilities, and buildings across the North Metropolitan Health Service (NMHS) sites.



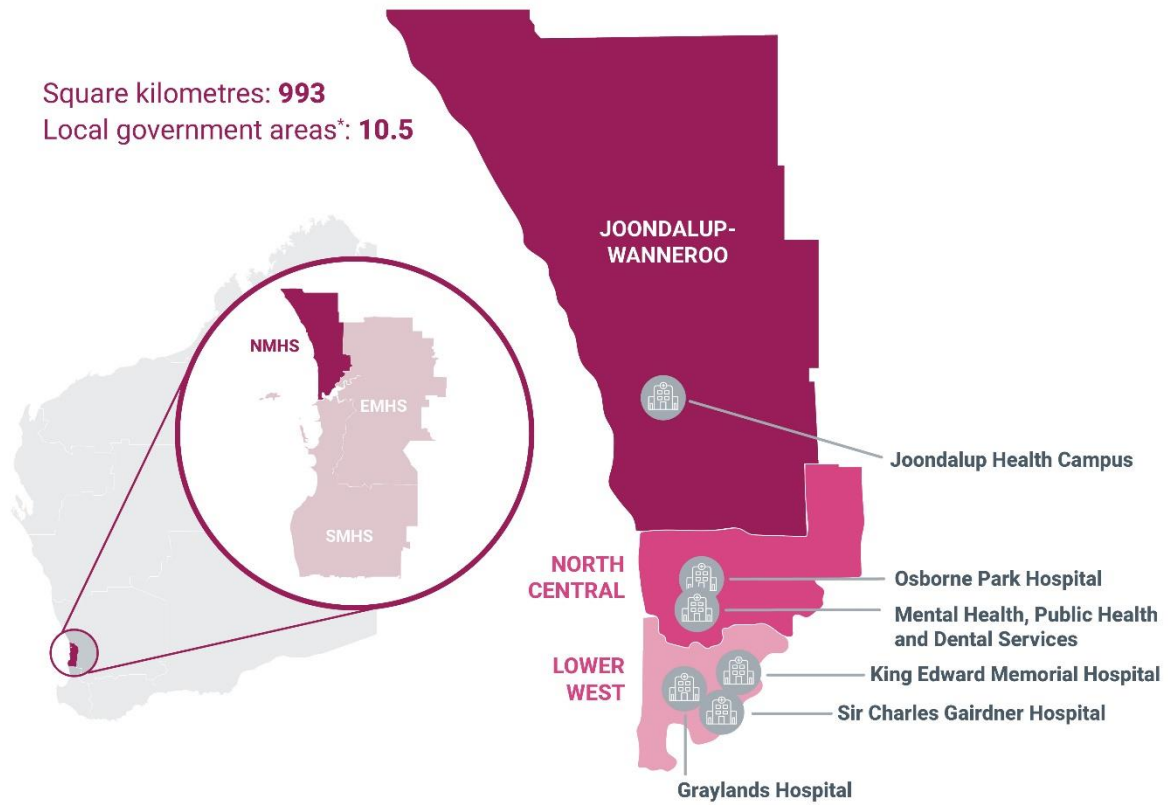
**Vision**

A trusted partner, delivering excellent health care for our people and our communities.



**Mission**

To promote and improve the health of our people and our communities.



**North Metropolitan Health Service**

Since our establishment in 2016, NMHS has embraced best practice to deliver improved clinical outcomes in the face of rising challenges for all healthcare providers. With a budget of \$2.16 billion and 8,917 full-time equivalent (FTE) staff, we serve a population of 736,907 people (about 28% of Western Australia's total population) within a catchment area of almost 1,000 square kilometres. The population we serve is projected to increase by 17% between 2021 and 2031, and the number aged 65 years and older will increase by 41% over the same period. NMHS provides a comprehensive range of adult specialist medical, surgical, mental health and obstetric services in WA, delivered across three tertiary hospitals and two secondary hospitals, all fully accredited. NMHS oversees the provision of contracted public health care from Joondalup Health Campus operated under a public-private partnership. A range of statewide, highly specialised multidisciplinary services is offered from several NMHS hospital and clinic sites.



## Our values



### Care

We show empathy, kindness and compassion to all.



### Respect

We are inclusive of others and treat everyone with courtesy and dignity.



### Innovation

We strive for excellence and are courageous when exploring possibilities for our future.



### Teamwork

We work together as one team in a spirit of trust and cooperation.



### Integrity

We are honest and accountable and deliver as promised.

Please refer to [NMHS Values – Organisational/Individual Behaviours](#) for information on individual behaviours that reflect the organisation’s values.

## Our strategic priorities

We are focussing on six strategic priorities for the 2020-2025 period:

<p><b>Enabling healthy communities</b> We build healthy and engaged communities</p>	<p><b>People-centred care</b> We will place our consumers’ and their carers’ best interests and experience at the core of all we do</p>
<p><b>Integration and connection</b> We will build strong connections and partnerships</p>	<p><b>Innovation and adaptive models of care</b> We will use research and technology to improve outcomes</p>
<p><b>Trusted, engaged and capable people</b> We will invest in our people and our culture</p>	<p><b>Sustainable and reliable</b> We will reduce harm, waste and unwarranted variation</p>



## Key Accountabilities

### 1. Duties

- 1.1 Carries out maintenance painting on interior and exterior surfaces of buildings as per service manual and planned maintenance work orders.
- 1.2 Undertakes Planned Preventive Maintenance (PPM) works, ensuring compliance with relevant regulatory requirements.
- 1.3 Fabrication and production of signages and notices as required.
- 1.4 Initiates orders of materials and spare equipment as required.
- 1.5 Prepares estimates on works as required by the FM team
- 1.6 Carries out maintenance painting on furniture, fittings and paint items manufactured by the Facilities Management (FM) team.
- 1.7 Maintains paint shop, tools, and equipment, in good working order and condition, and safely operates machinery as per manufacture's guidelines.
- 1.8 Coordinates with contractors and departments on joint projects and provides support when required.
- 1.9 Carries out all duties in accordance with prescribed workmanship standards and complies with all Work Health Safety obligations, prescribed safety standards and best working practice.
- 1.10 Participates in the staff development program including orientation, in-service, performance appraisals, quality activities and mental health training.
- 1.11 Ensures security of hospital property by taking due care in executing allocated tasks
- 1.12 Assists with apprentice training as required.
- 1.13 Provide technical advice to the FM team and contributes to continuous improvement practices.

### 2. NMHS Values: *Care, Respect, Innovation, Teamwork, Integrity*

- 2.1 Reflect the NMHS values in the way you work, behave and make decisions.

### 3. NMHS Governance, Safety and Quality Requirements

- 3.1 Participates in the maintenance of a safe work environment.
- 3.2 Participates in annual Individual Development Plan reviews.
- 3.3 Supports the delivery of safe patient care and the consumers' experience including participation in continuous quality improvement activities in accordance with the requirements of the National Safety and Quality Health Service Standards and other recognised health standards.
- 3.4 Completes mandatory training (including safety and quality training) as relevant to role.
- 3.5 Performs duties in accordance with Government, WA Health, North Metropolitan Health Service and Departmental / Program specific policies and procedures.
- 3.6 Abides by the WA Health Code of Conduct, Work Health and Safety legislation, the Disability Services Act and the Equal Opportunity Act.

### 4. Undertakes other lawful duties as directed.



## Work Related Requirements

The following criteria should be considered in the context of the NMHS Vision, Mission and Values.

### Essential Selection Criteria

1. Possession of a Trade Certificate in Painting and Decorating **or** equivalent qualification **or** current Painting Practitioner registration by the Building Services Board **and** sound post trade experience.
2. Demonstrated ability to work independently with minimum supervision as well as working with a team of dedicated customer focused, multi-skilled facilities management team environment.
3. Demonstrated good interpersonal and communication (verbal and written) skills including the ability to engage with all stakeholders across North Metropolitan Health Service sites.
4. Current knowledge of legislative obligations for Work Health and Safety, and how this impact service delivery.
5. Current "C" or "CA" class driver's licence

### Desirable Selection Criteria

1. Demonstrated competency in the use of computer-based maintenance system.
2. Current knowledge and commitment to Equal Opportunity, and Disability Services in all aspects of employment and service delivery.

### Appointment Prerequisites

Appointment is subject to:

- Evidence of current "C" or "C.A." class driver's licence.
- Provision of the minimum identity proofing requirements.
- Successful Criminal Record Screening Clearance.
- Successful Pre-Employment Integrity Check.
- Successful Pre-Employment Health Assessment.

## Certification

The details contained in this document are an accurate statement of the duties, responsibilities and other requirements of the position.

### Manager/Supervisor

Name:  
Signature/HE:  
Date:

### Dept./Division Head

Name:  
Signature:  
Date:

### Position Occupant

Name:  
Signature:  
Date:

