



## Principal GIS and Data Analyst

<b>Branch:</b>	Future Mobility
<b>Directorate:</b>	Urban Mobility
<b>Position Number:</b>	00026948
<b>Classification:</b>	Level 7
<b>Physical Location:</b>	Perth (William Street)
<b>Award/Agreement:</b>	Public Service Award & Public Sector CSA Agreement 2022

### **Our Purpose:** *Empowering a Thriving Community*

The Department of Transport (DoT) together with Main Roads WA and the Public Transport Authority forms the Transport portfolio. DoT seeks to connect people and places to keep Western Australia moving towards a safer, healthier and more sustainable future.

### **Our Values:**

<b>Collaboration</b>	<i>Working together, we get things done</i>
<b>Wellbeing</b>	<i>Looking after ourselves and supporting others</i>
<b>Adaptability</b>	<i>Always open to possibilities</i>
<b>Accountability</b>	<i>Taking ownership, we deliver</i>

DoT promotes a diverse workforce and embraces a high standard of equal opportunity, health and safety, and ethical practice. DoT is a values-based organisation committed to empowering a thriving community. Join us and work in a role where you can bring your best self to work and leave work having been seen and heard, and able to contribute meaningfully to the communities throughout Western Australia.

## Overview of Directorate

The Urban Mobility Directorate exists to provide integrated transport strategy, policy, planning and programs to optimise the current and future use of the transport network for moving people in cities and major centres.



## Overall Purpose of the Role

Leads complex Geographic Information Systems (GIS) and spatial data tasks, manages spatial data requirements for the Urban Mobility Directorate, and ensures consistency with processes and practices used across the department.

## Work Description

- Manages the development and maintenance of the directorate's custodial spatial datasets.
- Provides advice to staff in the directorate on custodial data management issues and data sourcing.
- Establishes, maintains and enhances relationships with peers in the department, particularly in Coastal Information, at other agencies and through relevant cross-jurisdictional networks.
- Reviews and prioritises data and geospatial support requests.
- Provides expert technical research, advice and analysis associated with spatial data, based on needs within the directorate.
- Reviews existing business processes involving spatial data for effectiveness and efficiency in the delivery of services and recommends improvement strategies.
- Develops and plans strategies for achieving the directorate's objectives within set timeframes.
- Supports relevant procurements of professional services and works collaboratively with suppliers, as required.
- Leads other team members, as relevant, in undertaking tasks and providing effective spatial and data services. Sets clear role expectations, provides feedback on performance and supports staff wellbeing.
- Empowers others to think innovatively and develop creative solutions.
- Trains staff and provides technical support in the use of a range of applications and GIS products.
- Undertakes other duties as required.



## Work related requirements

The following criteria are to be applied within the context of this position, which includes alignment to the Department's values.

### Criteria

#### ESSENTIAL:

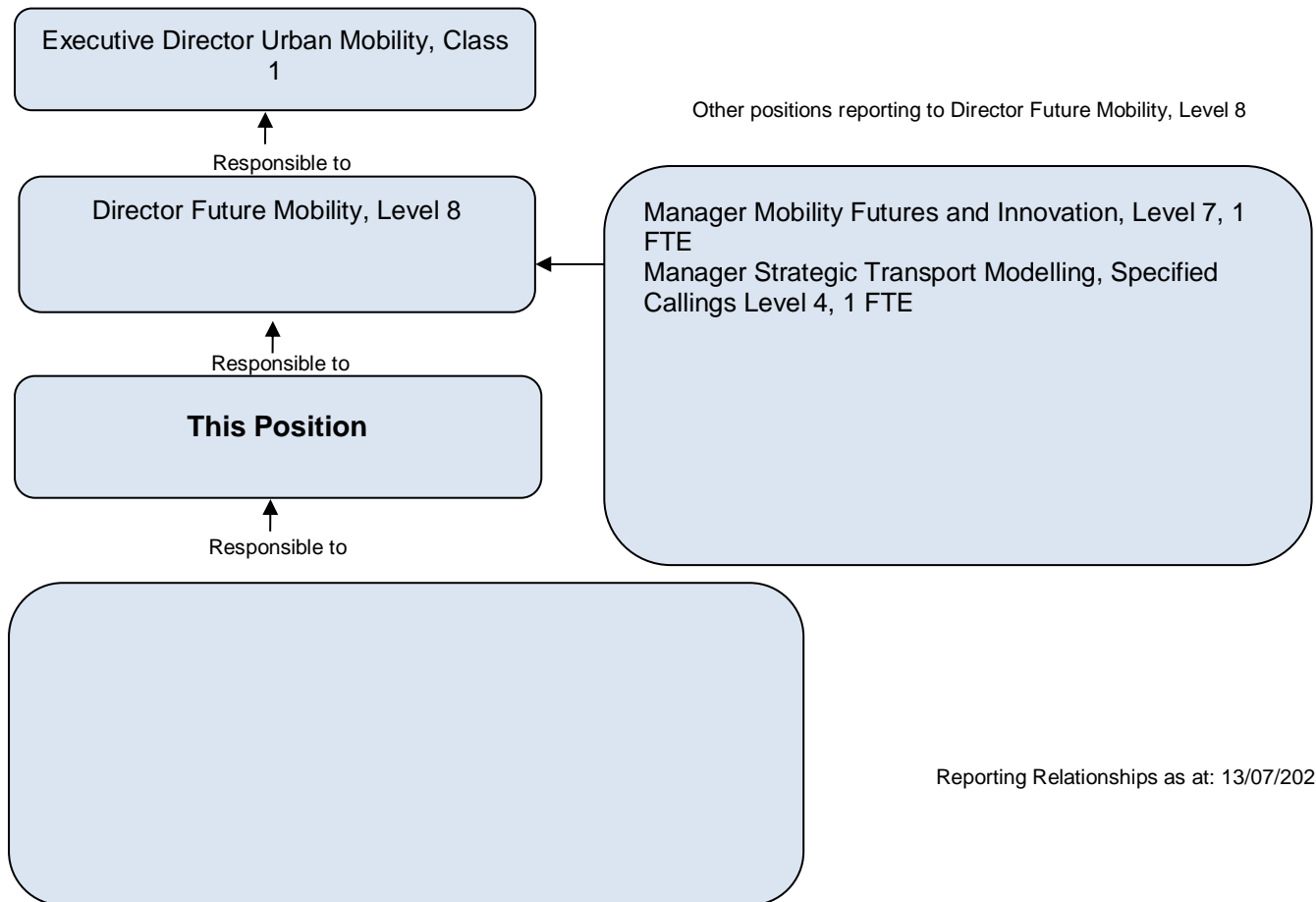
1. Substantial experience working in a geospatial environment and leading data mapping and analysis projects.
2. Experience in or knowledge of traffic engineering and/or transport planning.
3. Demonstrated skills in the implementation of corporate databases and GIS within a large or complex organisation.
4. Substantial experience and skills in the use of Environmental Systems Research Institute (ESRI) software applications and associated web applications or equivalent GIS vendor applications.
5. Well-developed database design, maintenance and interrogation skills.
6. Demonstrated research, conceptual, analytical and problem-solving skills.
7. Well-developed verbal, written and interpersonal communication skills, including the ability to establish and maintain communication networks with a diverse group of stakeholders.

#### DESIRABLE:

8. Qualifications relevant to Spatial Science, Mapping Science or Cartography with eligibility for professional accreditation in to the Surveying and Spatial Sciences Institute (SSSI).
9. Experience leading teams.



## Reporting Relationships



## Allowances/Special Conditions

- A current national police clearance certificate incorporating criminal and traffic convictions and infringements is required for this position.
- Must be prepared to undertake intrastate travel as and when necessary.

## Certification

The details contained in this document are an accurate statement of the duties, responsibilities and other requirements of the position.

**Executive Director  
People and Culture**