



KIMBERLEY

Landscape Photos: Tourism Western Australia

**Position Title**

**Position number: 608037**

**Registered Nurse**

### Regional Profile

WACHS Kimberley is the most northern health region of WACHS. The Kimberley region has approximately 200 Aboriginal communities, over 34 different Aboriginal language groups and 45 percent of the population are Aboriginal and/or Torres Strait Islander people. WACHS Kimberley consists of six hospitals, an inpatient mental health unit, three Community Directorates and a Corporate Office. WACHS Kimberley provides hospital, community health, public health, remote area health, community aged care, and mental health services across the region through a dedicated team of medical, nursing, Aboriginal health, allied health and support staff.

### About the WA Country Health Service

#### Our Strategic Priorities



#### Our Values

##### Community

We live and work in country communities. We are invested in the health, wellness and viability of country communities and the vibrancy, diversity and future of country WA.

##### Compassion

We are inclusive, respectful, and considerate. We care deeply about the people in our care and country communities.

##### Quality

We provide safe, high-quality care, constantly striving to innovate, improve and achieve trust in our care.

##### Integrity

We bring honesty, collaboration and professionalism to everything that we do.

##### Equity

We are passionate about fairness in healthcare for all Western Australians, especially the most vulnerable and disadvantaged people and communities.

##### Curiosity

We continually enquire and seek to understand, using the best evidence, insight and research to improve care.

#### Our Vision

To be a global leader in rural and remote healthcare.

#### Our Mission

To deliver and advance high quality care for country WA communities.

## Directorate overview

This team works to care for patients across the West Kimberley with Health Services located in Derby, Fitzroy Crossing and Looma Community.

West Kimberley Health Professionals provide a high level of care for local residents, members of the community, and visitors to the region. The services provided in the West Kimberley include Allied Health, Child and Adolescent Services, Community Health, Drug and Alcohol Services, Emergency Care, General Medicine, General Surgery, Maternity, Mental Health, Neonates, Outpatients and more.

Our Directorate actively supports and encourages diversity and inclusion across all occupational groups through the development and implementation of initiatives aimed at accessing and improving employment and mentoring opportunities for all people. Our strategies are located at [www.wacountry.health.wa.gov.au](http://www.wacountry.health.wa.gov.au)

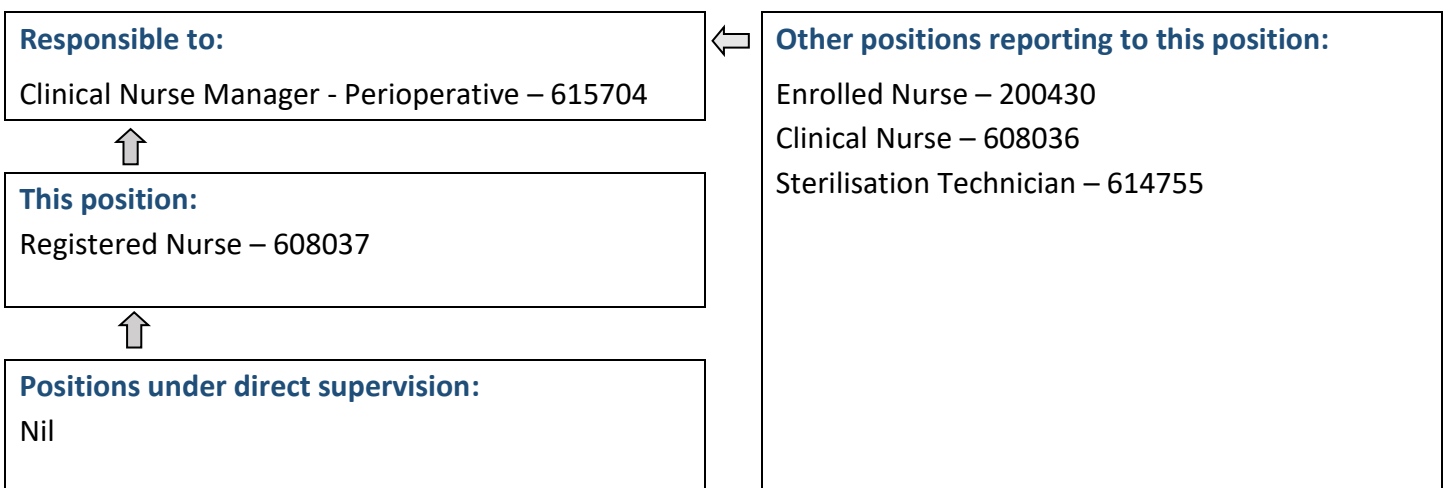
## Position Details

Position Number:	608037	Registration Date:	17 May 2022
Classification:	RN Level 1	Location:	Derby
Award / Agreement:	Nurses and Midwives Agreement		
Organisational Context:	Nursing Services		

## Position Overview

To provide nursing care for patients attending theatre within the scope of practice of a Registered Nurse. Assists in the planning and facilitates the unit nursing activities in collaboration with Clinical Nurses. Acts as a clinical resource for other Registered Nurses, Enrolled Nurses, Graduate nurses, Assistants in Nursing and Student Nurses.

## Reporting Relationships



## Key Duties/Responsibilities

### 1. CLINICAL

- 1.1 Maintains competence to practice in accordance with national competency standards for the Registered Nurse as described by the Nursing and Midwifery Board of Australia.
- 1.2 Responsible for the assessment, planning, implementation, facilitation and evaluation of the delivery of patient care.
- 1.3 Ensures all documentation complies with NSQHS Standards and provides an accurate medico-legally sound record of each care episode.
- 1.4 Coordinates multidisciplinary services to ensure a high standard of health care delivery.
- 1.5 Identifies patient education needs and implements appropriate teaching, including coordination of patient education programs.
- 1.6 Plans and facilitates nursing activities and performs role of shift coordinator as required.
- 1.7 Actively participates in improvement and research programs in conjunction with others to improve the unit or hospital health care service.
- 1.8 Participates in unit based decision-making and supports the achievement of unit, hospital, regional and WA Country Health Service objectives.
- 1.9 Facilitates others in their development of competencies and organisational skills including performance management of designated nursing personnel.
- 1.10 Be accountable for the safe, efficient and effective use of resources, including assisting with forward planning for the unit.
- 1.11 Promotes education activities including but not limited to orientation, preceptorship, supervision and validation.

### 2. OTHER

- 2.1 Other duties as directed by line manager or their delegate.



## Work Related Requirements

The following criteria are to be read together with the Brief Summary of Duties and considered in the context of the WACHS Values.

### Essential

- 1 Eligible for registration in the category of Registered Nurse by the Nursing and Midwifery Board of Australia.
- 2 Demonstrated competent nursing practice, within the relevant practice setting.
- 3 Demonstrated competence in planning, coordination and decision making in the management of patients within the relevant practice setting.
- 4 Demonstrated commitment and ability to work within a team structure.
- 5 Demonstrated effective written and verbal communication and interpersonal skills.
- 6 Demonstrates incorporation of quality and risk management within practice.

### Desirable

- 1 Demonstrated computer skills.
- 2 Possession of or progression towards an appropriate post-graduate qualification.
- 3 Current knowledge and commitment to Equal Opportunity, Disability Services and Occupational Safety and Health in all aspects of employment and service delivery.

## Appointment Pre-requisites

Where applicable – District Allowance, Annual Leave Travel Concession, one week additional annual leave for above the 26<sup>th</sup> parallel, airconditioning subsidy

Appointment is subject to:

- Evidence of current registration by the Nursing and Midwifery Board of Australia must be provided prior to commencement
- Provision of the minimum identity proofing requirements
- Successful Criminal Record Screening Clearance
- Successful Pre-Employment Health Assessment
- Successful WA Health Integrity Check
- Successful Working With Children Check

