



Landscape Photos: Tourism Western Australia

## Position Title

Position number: 615935

# Clinical Nurse Specialist

### Division Description

The WA Country Health Service (WACHS) Midwest health region of Western Australia covers more than 470,000 square kilometres, nearly one fifth of the State, with its population concentrated along the coast. The region is located in the northern middle section of Western Australia and incorporates three health districts - Gascoyne, Geraldton, Midwest and Murchison, is recognised for its unique natural environment and is a culturally diverse region with Aboriginal people representing 13% of the overall population.

## About the WA Country Health Service

### Our Strategic Priorities



### Our Values

#### Community

We live and work in country communities. We are invested in the health, wellness and viability of country communities and the vibrancy, diversity and future of country WA.

#### Compassion

We are inclusive, respectful, and considerate. We care deeply about the people in our care and country communities.

#### Quality

We provide safe, high-quality care, constantly striving to innovate, improve and achieve trust in our care.

#### Integrity

We bring honesty, collaboration and professionalism to everything that we do.

#### Equity

We are passionate about fairness in healthcare for all Western Australians, especially the most vulnerable and disadvantaged people and communities.

#### Curiosity

We continually enquire and seek to understand, using the best evidence, insight and research to improve care.

### Our Vision

To be a global leader in rural and remote healthcare.

### Our Mission

To deliver and advance high quality care for country WA communities.

Position Title: <b>Clinical Nurse Specialist</b>	Position Number: 615935	Classification: RN SRN Level 2
--	-------------------------	--------------------------------

## Directorate overview

Our Health Districts Gascoyne, Geraldton, Midwest and Murchison support and deliver a diverse range of services including but not limited to Aboriginal Health, Community Health, Population Health, Medical, Nursing and Midwifery, Aged Care, Mental Health and Community Alcohol and Drug Services, Workforce, Infrastructure and Business Services.

These services are delivered in a range of practice settings including within the community, in nursing posts, multi purpose sites, hospital based facilities and via Telehealth.

Our Directorates actively support and encourage diversity and inclusion across all occupational groups through the development and implementation of initiatives aimed at accessing and improving employment and mentoring opportunities for all people. Our strategies are located at [www.wacountry.health.wa.gov.au](http://www.wacountry.health.wa.gov.au)

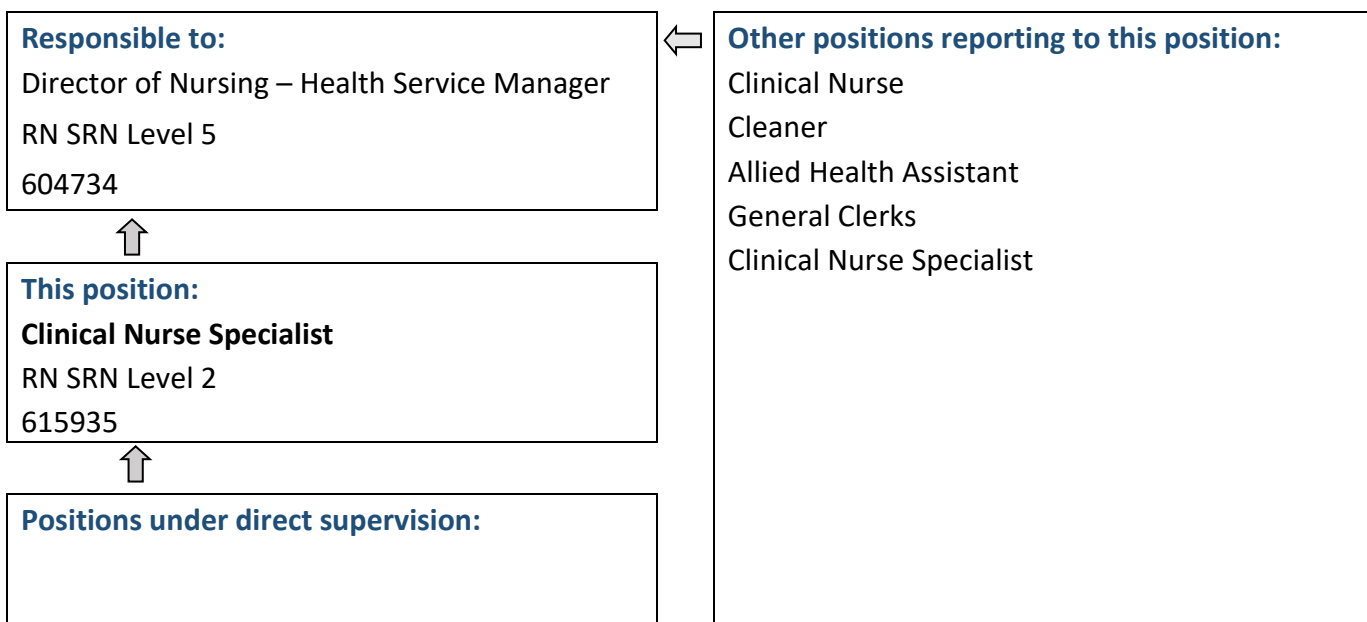
## Position Details

Position Number:	615935	Registration Date:	4 April 2023
Classification:	RN SRN Level 2	Location:	Cue
Award / Agreement:	Nurses and Midwives Agreement		
Organisational Context:	Midwest		

## Position Overview

To work as a member of a multidisciplinary team within a Primary Health Care framework in partnership with the community and other organisations. To provide planned, coordinated and comprehensive primary health and emergency care to members of the community in a culturally secure environment.

## Reporting Relationships



## Key Duties/Responsibilities

### 1. Clinical Function

- 1.1. Provide and coordinate quality Primary Health Care to individuals, families and the community within own level of competence, legislation and endorsed protocols to meet health outcomes.
- 1.2. Independently administer, provide and coordinate acute clinical services within own scope of practice, legislation, standards and within WACHS policies and guidelines.
- 1.3. Utilise a holistic approach to assessing clients and families in developing, implementing, supporting and evaluating health related initiatives.
- 1.4. Refer clients appropriately for health care outside of scope of practice by working in partnership with the client and other health professionals to ensure a multi-disciplinary approach and optimum outcomes from health care interventions.

### 2. Corporate Function

- 2.1. Coordinate and facilitate the community and clinic orientation for new staff.
- 2.2. Act as a Primary Health Clinical resource to preceptor Aboriginal Health Workers, Nursing and other students within the multi-disciplinary team.
- 2.3. Support Primary Health Services providers to facilitate the delivery of culturally safe health care to the community.
- 2.4. Establishment of collaborative relationships with other health and community stakeholders to ensure a range of quality services responsive to community needs, and in line with health strategic business planning for the region.

### 3. Support Function

- 3.1. Regularly communicate service provision issues within the clinic and the community to the Nurse Manager.
- 3.2. Maintain information systems including client records, computerised data information and client recall processes as required for legislative compliance and for the efficient and effective management of clients.
- 3.3. Ensure accountability for safe, efficient and effective use of resources.
- 3.4. Develop and maintain a culture of Quality Improvement and Risk Management for the Cue Nursing post in accordance with the ACHS Equip Guidelines and current WACHS quality and risk systems.
- 3.5. Participate in compulsory skills updates and ongoing professional development programs for remote clinic staff to maintain and improve primary health related skills and knowledge.
- 3.6. Demonstrate an awareness of safe functional environments at both the clinic and residential sites.

### 4. Other

- 4.1. Other duties as required.

The occupant of this position will be expected to comply with and demonstrate a positive commitment to the WACHS values and the highest achievement in demonstrating positive commitment to Equal Employment Opportunity, Occupational Safety & Health, Public Sector Standards, Code of Conduct, Code of Ethics, Quality Improvement, Performance Management, Customer Focus, Disability Services Act and Confidentiality throughout the course of their duties.



## Work Related Requirements

The following criteria are to be read together with the Brief Summary of Duties and considered in the context of the WACHS Values.

### Essential

1. Eligible for registration in the category of Registered Nurse by the Nursing and Midwifery Board of Australia
2. Broad Nursing experience including assessment, emergency management, Primary Health care, and recent accident and emergency skills
3. Demonstrated ability to work both independently and as part of a multi-disciplinary team in a cross-cultural setting.
4. Demonstrated effective interpersonal and written and verbal communication skills.
5. Demonstrated well developed problem solving and negotiation skills. Current knowledge of legislative and regulatory requirements in the areas of Equal Opportunity, Disability Services and Occupational Safety & Health, and how these impact on employment, people management and service delivery.
6. Eligible for / or in possession of a current C or C-A Class drivers licence or other specialised licence class with the willingness to travel within the region as required *including* overnight stays.

### Desirable

1. Relevant tertiary qualifications and post basic qualification (such as Midwifery, Emergency Medicine, Child Health, Psychiatry, Community Health, Public Health, Health Promotion, Primary Health Care, Remote Health Practice).
2. Immunisation provider's certificate or willingness to undertake same.
3. Experience working with patient management systems.

## Appointment Pre-requisites

Appointment is subject to:

- Evidence of current registration by the Nursing and Midwifery Board of Australia must be provided prior to commencement
- Provision of the minimum identity proofing requirements
- Successful Criminal Record Screening Clearance
- Successful Pre-Employment Health Assessment
- Successful WA Health Integrity Check
- Successful Working With Children Check
- Successful Aged Care Criminal Record Clearance
- Evidence of a current C or C-A Class driver's licence or other specialised licence class and ability to travel within the region as required *including* overnight stays

Allowances

- District allowance; air conditioning subsidy (if applicable); extra one week's leave north of 26<sup>o</sup> parallel; air travel concession

**WA Country Health Service  
Midwest**

**4 April 2023**

**REGISTERED**

