



# Job Description Form



Community | Compassion | Quality



Integrity | Equity | Curiosity



## Position Title

Position number: Various

## Senior Physiotherapist

The WA Country Health Service (WACHS) is the largest country health system in Australia and one of the biggest in the world, providing health services to approximately half a million people, including 45,000 Aboriginal people, over a vast two and a half million square kilometres area.

The range of health services provided covers emergency and hospital services, population and community health, mental health, Aboriginal health, aged care and telehealth services.

## About the WA Country Health Service

### Our Strategic Priorities



### Our Values

#### Community

We live and work in country communities. We are invested in the health, wellness and viability of country communities and the vibrancy, diversity and future of country WA.

#### Compassion

We are inclusive, respectful, and considerate. We care deeply about the people in our care and country communities.

#### Quality

We provide safe, high-quality care, constantly striving to innovate, improve and achieve trust in our care.

#### Integrity

We bring honesty, collaboration and professionalism to everything that we do.

#### Equity

We are passionate about fairness in healthcare for all Western Australians, especially the most vulnerable and disadvantaged people and communities.

#### Curiosity

We continually enquire and seek to understand, using the best evidence, insight and research to improve care.

### Our Vision

To be a global leader in rural and remote healthcare.

### Our Mission

To deliver and advance high quality care for country WA communities.

## Allied Health Program Overview

WACHS Physiotherapists deliver health services that support the health and well-being of individuals and communities in rural and remote Western Australia. The range of health services provided covers emergency and hospital services, population and community health, Aboriginal health, cancer services, aged care and telehealth services. We are committed to partnering with communities and other service providers, utilising innovative technology and maintaining a skilled physiotherapy workforce to bring excellent services close to home for country people. Across the state we have:

- 6 large regional health campuses located at country regional centres
- 15 district health campuses that act as hubs for sub-regional health district services
- 46 small hospitals, 43 health centres and nursing posts
- 24 community-based mental health services, and 4 dedicated inpatient mental health services
- 178 facilities where population health teams are based
- Residential aged care facilities.

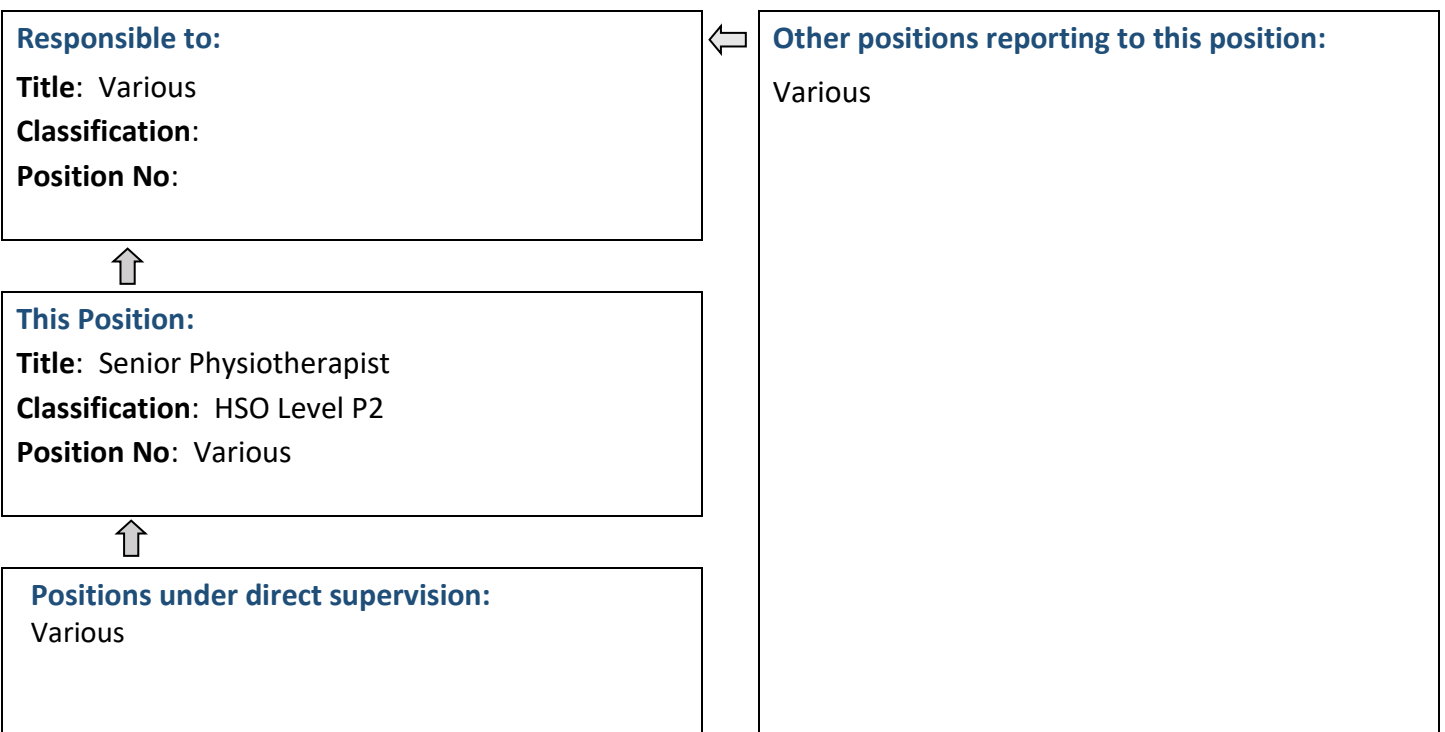
## Position Details

Position Number:	Various	Registration Date:	16/08/2022
Classification:	HSO Level P2	Location:	Various
Award / Agreement:	Health Salaried Officers Agreement		
Organisational Context:	Health Programs		

## Position Overview

Plans, coordinates, delivers, monitors and evaluates the delivery of timely and culturally appropriate Physiotherapy services within a dedicated regional location. Undertakes associated supervisory and administrative duties as part of the WA Country Health Services provision.

## Reporting Relationships



## Key Duties/Responsibilities

### 1. CLINICAL

- 1.1. As a senior member of staff, contribute to the strategic planning, development, implementation and evaluation of an evidence-based, consumer-centred and culturally appropriate Physiotherapy and overall Health Service.
- 1.2. Provide high level clinical care for a range of Physiotherapy clients in accordance with health service priorities.
- 1.3. Deliver evidence-based, patient-centred care, and health promotion and education, to build health literacy and promote self-management.
- 1.4. Participate in inter-professional and interagency collaboration for clients, as appropriate.
- 1.5. Develop and maintain effective working relationships with multidisciplinary teams, including WACHS, metropolitan hospitals, and external service providers to implement best practice, patient-centred care.
- 1.6. Report verbally and in writing to team members, other health professionals and external organisations where and as required.
- 1.7. Promote Physiotherapy services and the profession to clients, within the WACHS region and to the wider community, including liaising and negotiating provision of appropriate services.
- 1.8. Liaise and coordinate with consumers and relevant stakeholders regarding service delivery and development, and act as a Physiotherapy clinical consultant, providing advisory service and education/training as required.
- 1.9. Participate in weekend rosters and/or out-of-hours acute treatment and/or travel within region, as required.

### 2. ADMINISTRATION/PROFESSIONAL

- 2.1 Provide clinical supervision, allocate duties, facilitate performance management and mentor assigned Physiotherapy and related staff.
- 2.2 Provide consultancy and advice on clinical governance and best practice in Physiotherapy and related issues to medical, nursing, administrative, primary health and other staff as appropriate.
- 2.3 Support line manager to manage human, physical and budgetary resources relevant to Physiotherapy services, including coordination or recruitment.
- 2.4 Lead and support practice evaluation, risk management and quality improvement initiatives in the region/health service relating to Physiotherapy services.
- 2.5 Liaise with universities, coordinate student placements, and provide appropriate supervision and mentoring for students in clinical practicum.
- 2.6 Maintain reliable documentation and record keeping in accordance with relevant guidelines.
- 2.7 Collect and analyse patient and service-related data for planning and evaluation and manage data in accordance with relevant guidelines.
- 2.8 Participate in education and professional development to maintain and upgrade own knowledge and skills (both clinical and managerial). Support and facilitate skill development of others, including Physiotherapy and related staff.
- 2.9 Seek opportunities to undertake research/evaluation for advanced professional practice.
- 2.10 Participate in relevant clinical and leadership meetings and committees.

### 3. OTHER DUTIES

- 3.1 Undertake other duties as required or directed.



## Work Related Requirements

The following criteria are to be read together with the Brief Summary of Duties and considered in the context of the WACHS Values.

### ESSENTIAL

1. Tertiary qualification in Physiotherapy and registration with the Physiotherapy Board of Australia.
2. Demonstrated experience and high level of clinical skills and knowledge in a wide range of physiotherapy assessment, treatment and evaluation.
3. Demonstrated high level interpersonal and verbal and written communication skills (including information technology, conflict resolution and negotiation).
4. Demonstrated ability to manage a clinical caseload and work both independently and as a senior member of the multidisciplinary allied health team.
5. Demonstrated clinical leadership, supervision and governance skills in physiotherapy services and practice, with the ability to undertake quality improvement initiatives and plan services.
6. Demonstrated knowledge and commitment to legislative obligations for Equal Opportunity, Disability Services and Occupational Safety and Health; and how these impact on employment and service delivery.

### DESIRABLE

1. Experience working in a rural and/or remote setting and an understanding of regional/rural service issues and their potential impact on physiotherapy service provision, with particular reference to Aboriginal Health.
2. Possession of expertise/experience in a specialist area and/or working towards a relevant post graduate qualification.

## Appointment Pre-requisites

Appointment is subject to:

- Evidence of eligibility for or current registration by the Physiotherapy Board of Australia must be proved prior to commencement.
- Provision of the minimum identity proofing requirements
- Successful Criminal Record Screening clearance
- Successful Pre-Employment Health Assessment
- Successful WA Health Integrity Check
- Successful Working With Children Check
- Evidence of a current C or C-A Class drivers licence

WA Country Health Service –  
Central Office

16 August 2022  
REGISTERED

