



Job Description Form



GOLDFIELDS

Landscape Photos: Tourism Western Australia

Position Title

Position number: 615312

Registered Nurse

Regional Overview

The Goldfields region of the WA Country Health Service covers the Goldfields-Esperance Region of Western Australia. The region is located in the south eastern corner of Western Australia and covers 770,488 sq km (including offshore islands). The WA Country Health Service Goldfields consists of two main health campuses located in Kalgoorlie & Esperance, and three smaller hospitals located in Laverton, Leonora and Norseman. The Goldfields is a culturally rich region with a number of Aboriginal communities spread out across the region, 16 distinct Aboriginal language groups and an Aboriginal population that represents 12.3 per cent of our total population, with 1 in 10 people, on average, identifying as Aboriginal – this in comparison to the state average of 3.6 per cent. The region supports a wide range of industry, including mining, agriculture, aquaculture and tourism. Mining is the predominant sector in the central and northern parts of the region, with a well-established agricultural sector in the south.

About the WA Country Health Service

Our Strategic Priorities



Our Values

Community

We live and work in country communities. We are invested in the health, wellness and viability of country communities and the vibrancy, diversity and future of country WA.

Compassion

We are inclusive, respectful, and considerate. We care deeply about the people in our care and country communities.

Quality

We provide safe, high-quality care, constantly striving to innovate, improve and achieve trust in our care.

Integrity

We bring honesty, collaboration and professionalism to everything that we do.

Equity

We are passionate about fairness in healthcare for all Western Australians, especially the most vulnerable and disadvantaged people and communities.

Curiosity

We continually enquire and seek to understand, using the best evidence, insight and research to improve care.

Our Vision

To be a global leader in rural and remote healthcare.

Our Mission

To deliver and advance high quality care for country WA communities.

Directorate Overview

This portfolio provides the region with nursing leadership and governance. It also supports the following regional services: cancer care coordination, infection control, palliative care, renal services. Administratively it also has a regional focus on nursing recruitment, safety, quality and risk management.

Our Directorate actively supports and encourages diversity and inclusion across all occupational groups through the development and implementation of initiatives aimed at accessing and improving employment and mentoring opportunities for all people. Our strategies are located at www.wacountry.health.wa.gov.au

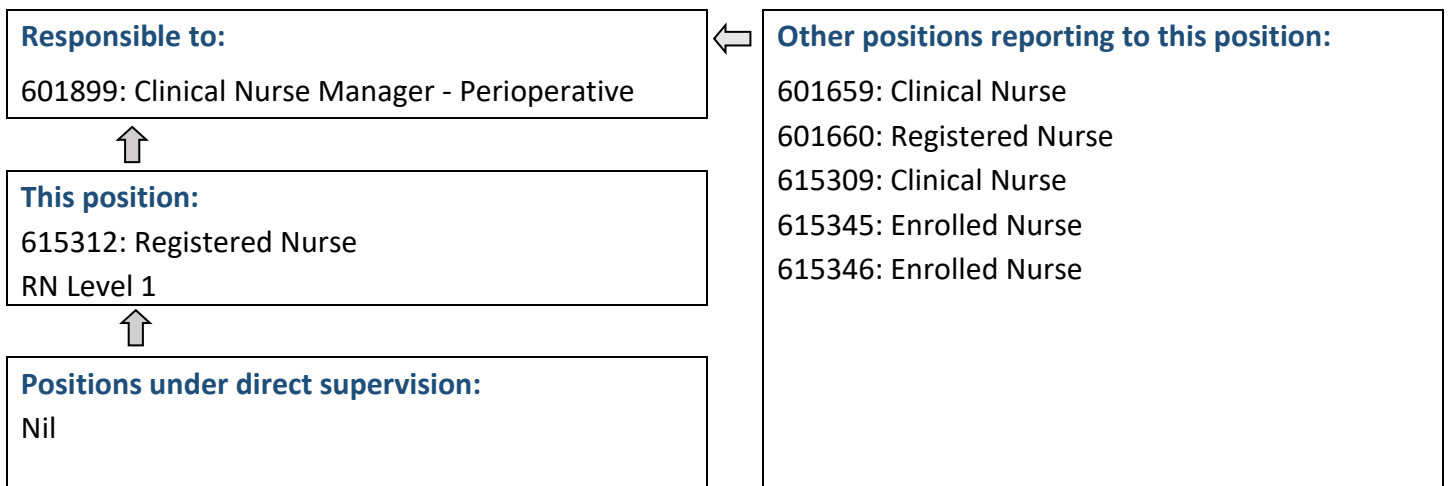
Position Details

Position Number:	615312	Registration Date:	May 2023
Classification:	RN Level 1	Location:	Esperance
Award / Agreement:	Nurses and Midwives Agreement		
Organisational Context:	Theatre		

Position Overview

Responsible for the assessment of nursing and implementation of high quality customer focused peri-operative care in the operating theatres and the recovery room.

Reporting Relationships



Key Duties/Responsibilities

1. CONTINUUM OF CARE

- 1.1. Maintains competence to practice in accordance with national competency standards for the Registered Nurse as described by the Nursing and Midwifery Board of Australia.
- 1.2. Responsible for assessment, planning, implementation, facilitation and evaluation of the delivery of patient care.
- 1.3. Maintain governance of documentation to comply with WACHS policies and procedures, National Standards and ACORN standards.
- 1.4. Coordinates multidisciplinary services to ensure a high standard of health care delivery.
- 1.5. Identifies patient education needs and implements appropriate teaching, including coordination of patient education programs.
- 1.6. Plans and facilitates nursing activities and performs role of shift coordinator as required.
- 1.7. Actively participates in improvement and research programs in conjunction with others to improve the unit or hospital health care service.
- 1.8. Participates in unit based decision-making and supports the achievement of unit, hospital, regional and WA Country Health Service objectives.
- 1.9. Facilitates others in development of competencies and organisational skills including performance management of designated nursing personnel.
- 1.10. Is accountable for the safe, efficient and effective use of resources, including assisting with forward planning for the unit.
- 1.11. Promotes education activities including but not limited to orientation, preceptorship, supervision and validation.

2. OTHER

- 2.1. Participates on the On-Call roster for the Theatre Department.
- 2.2. Other duties as directed by the Line Manager or their delegate.



Work Related Requirements

The following criteria are to be read together with the Brief Summary of Duties and considered in the context of the WACHS Values.

Essential

1. Eligible for registration in the category of Registered Nurse, by the Nursing and Midwifery Board of Australia.
2. Demonstrated competence in planning, coordination and decision making in the management of patients, within the relevant practice setting.
3. Demonstrated recent appropriate acute experience in the peri-operative field as a Registered Nurse.
4. Demonstrated ability to function as a team leader and team member.
5. Demonstrated effective written and verbal communication skills and interpersonal skills.
6. Demonstrated incorporation of quality and risk management within Theatre.
7. Current knowledge of legislative obligations for Equal Opportunity, disability Services and Occupational Safety and Health, and how these impact on employment and service delivery.

Desirable

1. Possession of or progression towards a post-graduate qualification relevant to Theatre nursing.
2. Knowledge of current health issues and the organisational culture of rural health services.
3. Demonstrated computer skills.

Appointment Pre-requisites

Appointment is subject to:

- Evidence of current registration by the Nursing & Midwifery Board of Australia must be provided prior to commencement
- Provision of the minimum identity proofing requirements
- Successful Criminal Record Screening Clearance
- Successful Pre-Employment Health Assessment
- Successful WA Health Integrity Check
- Successful Working With Children Check

WA Country Health Service –
GOLDFIELDS

10 May 2023

REGISTERED
Job Description Form

