



# Job Description Form



PILBARA

Landscape Photos: Tourism Western Australia

## Position Title

Position number: 300117

**Clinical Nurse**

## Regional Profile

The Pilbara is WA’s second most northern region, defined by the Indian Ocean to the west and the Northern Territory border to the east. The Kimberley Region lies to its north across the Great Sandy Desert and the Pilbara’s southern reaches border the Midwest and Goldfields regions. The region covers a total area of 507,896sq km (including off shore islands). Most of the inhabitants are located in the western third, whereas the eastern third is largely desert with few inhabitants. Today the Pilbara economy is crucial to the State, providing 2 of the State’s largest export revenue earners – iron ore and liquefied natural gas.

## About the WA Country Health Service

### Our Strategic Priorities



### Our Values

#### Community

We live and work in country communities. We are invested in the health, wellness and viability of country communities and the vibrancy, diversity and future of country WA.

#### Compassion

We are inclusive, respectful, and considerate. We care deeply about the people in our care and country communities.

#### Quality

We provide safe, high-quality care, constantly striving to innovate, improve and achieve trust in our care.

#### Integrity

We bring honesty, collaboration and professionalism to everything that we do.

#### Equity

We are passionate about fairness in healthcare for all Western Australians, especially the most vulnerable and disadvantaged people and communities.

#### Curiosity

We continually enquire and seek to understand, using the best evidence, insight and research to improve care.

### Our Vision

To be a global leader in rural and remote healthcare.

### Our Mission

To deliver and advance high quality care for country WA communities.

## Directorate overview

The Pilbara Nursing and Midwifery Service is committed to the care of our patients and the improvement of the health of our community despite the many challenges of their remoteness and isolation. Employing a large number of registered nurses/midwives, enrolled nurses, nurse practitioners, clinical nurse specialists, assistants in nursing, Aboriginal Health Workers and Aboriginal Health Practitioners; we value our workforce and are committed to creating opportunities for continuous learning, mentorship, skills specialisation and career progression within staff development, nursing and midwifery research and nursing management and leadership. The Pilbara region includes Hedland Hospital, Karratha Hospital, Newman Hospital, Roebourne, Onslow, Tom Price and Paraburdoo Hospitals, Marble bar and Nullagine Health Centres as well as a range of Aboriginal Community Health Clinics, Community and Public Health Nursing services, Mental Health and Drug Services. Nursing in rural and remote areas can be rewarding and challenging. The Pilbara Nursing and Midwifery Service is committed to the care of our patients and the improvement of the health of our community despite the many challenges of their remoteness and isolation. Our Directors and Coordinators of Nursing and Nursing/Midwifery service Managers and Regional Nurse Managers are key people who are accountable for overseeing the highest standard of care and professional conduct. These roles are there to support you in your practice and in your professional development and I encourage you all to participate actively in your own development, and that of others.

Our Directorate actively supports and encourages diversity and inclusion across all occupational groups through the development and implementation of initiatives aimed at accessing and improving employment and mentoring opportunities for all people. Our strategies are located at [www.wacountry.health.wa.gov.au](http://www.wacountry.health.wa.gov.au)

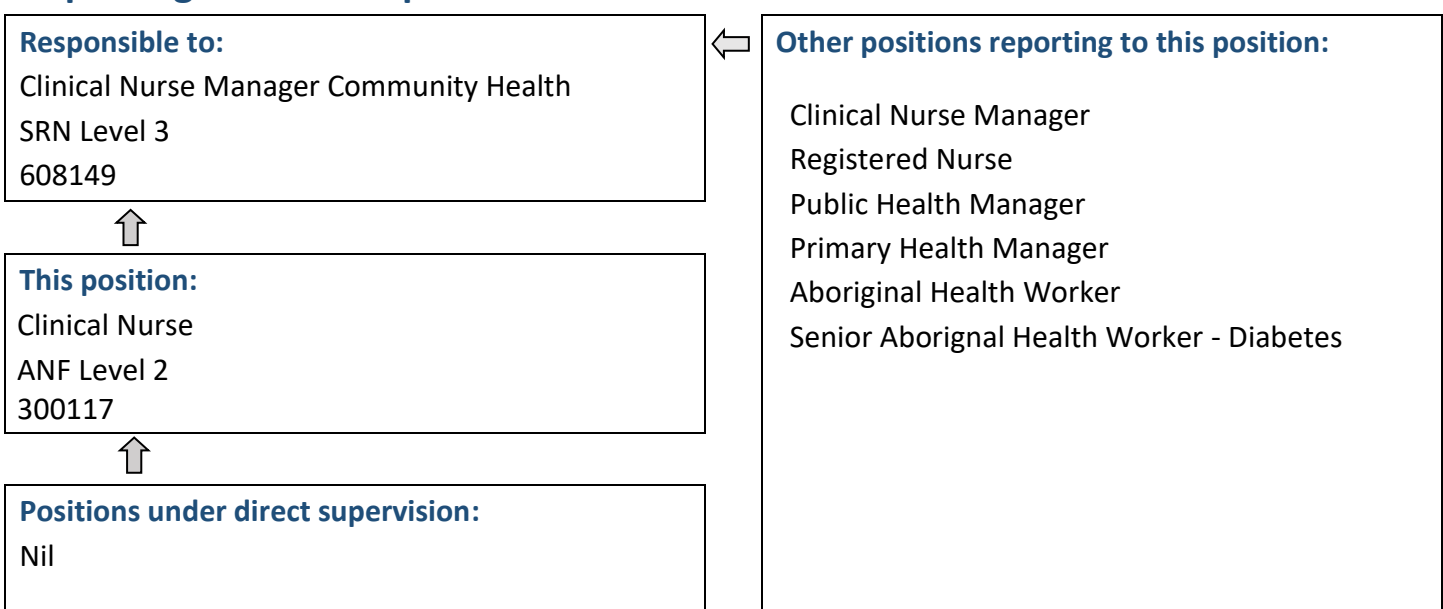
## Position Details

Position Number:	300117	Registration Date:	15 November 2022
Classification:	ANF level 2	Location:	Newman, Pilbara
Award / Agreement:	Nurses and midwives Agreement		
Organisational Context:	Population Health		

## Position Overview

Demonstrates an advanced level of knowledge in Community Nursing and delivery of School Health in accordance with School level Agreements. Promotes and maintains collaborative relationships with Department of Education and a multidisciplinary team.

## Reporting Relationships



## Key Duties/Responsibilities

### 1. CLINICAL MANAGEMENT

- 1.1. Provides Primary Health Care to Individuals and families to meet health service outcomes in accordance with WACHS Policy.
- 1.2. Assess the specific needs of the individual/family in order to provide efficient interventions.
- 1.3. Works in partnership with key stakeholders in delivering health programs and advice.
- 1.4. Plans service delivery for the individual/family in relation to priority programs.
- 1.5. Participates in School Entry Health Assessments.
- 1.6. Participates in Children in Care Assessments.
- 1.7. Assists in the coordination and service delivery of School Based Immunisation Program.
- 1.8. Assists in the service delivery of Childhood Immunisation Schedule.

### 2. PROFESSIONAL MANAGEMENT

- 2.1. Actively contributes to peer and professional review.
- 2.2. Acts as a preceptor for nursing students and graduates.
- 2.3. Advises Community Nurse Manager on matters relating to clinical practice within nominated area.

### 3. ADMINISTRATION

- 3.1. Documents all related contacts on electronic data systems.
- 3.2. Maintains effective relationships with Education Department for the coordination of School Health Delivery.

### 4. Other

- 4.1. Other duties as directed by the Community Nurse Manager.





## Work Related Requirements

The following criteria are to be read together with the Brief Summary of Duties and considered in the context of the WACHS Values.

### Essential

1. Eligible for Registration in the category of Registered Nurse by the Nursing and Midwifery Board of Australia.
2. Evidence of recent post graduate nursing experience with demonstrated advanced nursing knowledge and skills.
3. Demonstrated well developed interpersonal skills and the ability to communicate across a diverse spectrum of the Population.
4. Understanding of the Principles of Primary Health Care and the application to the community Health Service Delivery.
5. Current C Class Driver's licence and the ability to travel within the region as required including overnight stays.

### Desirable

1. Current immunisation provider certificate.
2. Current knowledge and commitment to Equal Opportunity, Disability Services and Occupational Safety and Health in all aspects of employment and service delivery.

## Appointment Pre-requisites/Allowances

### Appointment is subject to:

- Evidence of Current registration by the Nursing and Midwifery Board of Australia must be provided prior to commencement
- Provision of the minimum identity proofing requirements
- Successful Criminal Record Screening Clearance
- Successful Pre-Employment Health Assessment
- Successful WA Health Integrity Check
- Successful Working With Children Check
- Evidence of a current C or C-A Class driver's licence or other specialised licence class
- Ability to travel within the region as required including overnight stays

**Allowances where applicable:** District Allowance, Annual Leave Travel Concession, one-week additional annual leave for above the 26th parallel, air-conditioning subsidy.

**WA Country Health Service  
Pilbara**

**15 November 2022**

**REGISTERED**

