



KIMBERLEY

Landscape Photos: Tourism Western Australia

**Position Title**

**Position number: 200579**

# Medical Imaging Technologist

## Regional Profile

WACHS Kimberley is the most northern health region of WACHS. The Kimberley region has approximately 200 Aboriginal communities, over 34 different Aboriginal language groups and 45 percent of the population are Aboriginal and/or Torres Strait Islander people. WACHS Kimberley consists of six hospitals, an inpatient mental health unit, three Community Directorates and a Corporate Office. WACHS Kimberley provides hospital, community health, public health, remote area health, community aged care, and mental health services across the region through a dedicated team of medical, nursing, Aboriginal health, allied health and support staff.

## About the WA Country Health Service

### Our Strategic Priorities



### Our Values

#### Community

We live and work in country communities. We are invested in the health, wellness and viability of country communities and the vibrancy, diversity and future of country WA.

#### Compassion

We are inclusive, respectful, and considerate. We care deeply about the people in our care and country communities.

#### Quality

We provide safe, high-quality care, constantly striving to innovate, improve and achieve trust in our care.

#### Integrity

We bring honesty, collaboration and professionalism to everything that we do.

#### Equity

We are passionate about fairness in healthcare for all Western Australians, especially the most vulnerable and disadvantaged people and communities.

#### Curiosity

We continually enquire and seek to understand, using the best evidence, insight and research to improve care.

### Our Vision

To be a global leader in rural and remote healthcare.

### Our Mission

To deliver and advance high quality care for country WA communities.

## Directorate overview

Broome Regional Health Campus is the Regional Hospital for the Kimberley, comprising of an Emergency Department which includes 7 centrally monitored bays, 3 consulting rooms and 1 quick care room, Outpatient Department provides 7 consulting rooms for salaried and visiting Medical Specialists, Operating Theatre with a 6 bed Same Day Surgical Unit, 24 acute bed Medical Surgical Ward, 8 bed Paediatric unit, including 3 cots in Level 2 Nursery, 8 bed Maternity unit, offering a Midwifery Group Practice service. Medical Support includes Pharmacy, Medical Imaging to provide Xray's, CT Scans and Sonography, with Allied Health services providing Physiotherapy, Speech Pathology and Occupational Therapy.

Broome Regional Health Campus is supported by other directorates such as Kimberley Mental Health Drug Service, Kimberley Population Health Unit and Kimberley Aged Care Services.

Our Directorate actively supports and encourages diversity and inclusion across all occupational groups through the development and implementation of initiatives aimed at accessing and improving employment and mentoring opportunities for all people. Our strategies are located at [www.wacountry.health.wa.gov.au](http://www.wacountry.health.wa.gov.au)

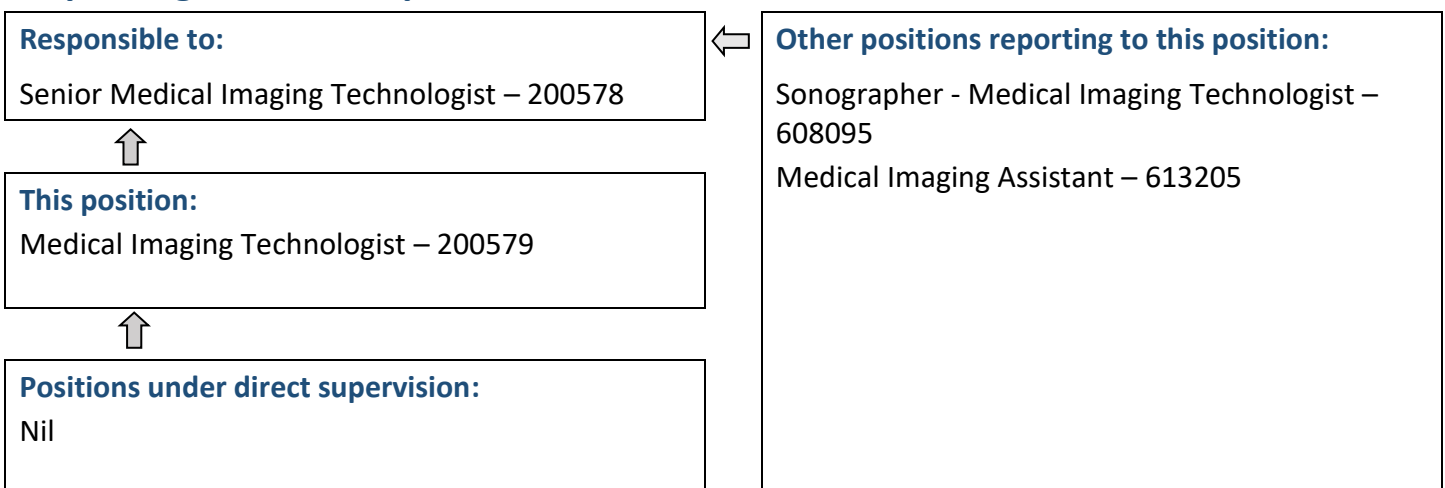
## Position Details

Position Number:	200579	Registration Date:	07 November 2022
Classification:	HSO Level P1	Location:	Broome
Award / Agreement:	Health Salaried Officers Agreement		
Organisational Context:	Medical Imaging		

## Position Overview

Participates in the provision of quality Medical Imaging services provided to the Broome Regional Health Campus.

## Reporting Relationships



## Key Duties/Responsibilities

### 1. PROFESSIONAL

- 1.1. Performs diagnostic imaging procedures as the person solely responsible for the examination or as a member of a multi-disciplinary team.
- 1.2. Performs all procedures in a professional manner in accordance with direction by a licensed Radiologist and Radiation Safety Act.
- 1.3. Takes responsibility for all aspects of patient and staff privacy, welfare and safety during the performance of examinations.
- 1.4. Assists with specialist procedures when visiting consultants are in attendance, e.g. Radiologist, Renal Vascular Surgeon, Orthopaedic Surgeon.
- 1.5. Liaises with referring or consulting medical personnel regarding patient care.
- 1.6. Assists in the quality control of imaging apparatus and associated equipment by ensuring correct operation, regular testing and reporting of maintenance issues.
- 1.7. Participates in after hours and on call roster as directed by Senior Medical Imaging Technologist (SMIT) for urgent plain film and Computed Tomography (CT) Scan examinations.
- 1.8. Ensures after hours Radiologist is informed of any urgent imaging performed to facilitate fast reporting turnaround.

### 2. ADMINISTRATION

- 2.1. Participates in arranging patient bookings and preparation.
- 2.2. Maintains and updates patient records, examination statistics and related information.
- 2.3. Participates in staff meetings.
- 2.4. Orders stores as necessary.
- 2.5. Initiates and participates in quality assurance programs.
- 2.6. Maintains continuing professional development points to remain and accredited with licensing body.
- 2.7. Keeps abreast of current scientific literature on diagnostic imaging, radiation safety, quality control and evaluates new techniques with view to introduction as routine practices.
- 2.8. Participates in education, orientation and all mandatory training programs.
- 2.9. Complies with Broome Regional Health Campus and departmental policies and procedures.
- 2.10. Participates in performance developmental reviews.

### 3. OTHER

- 3.1. Other duties as required.
- 3.2. Comply with requirements of Occupational Health and Safety Legislation in relation to equipment and premises.



## Work Related Requirements

The following criteria are to be read together with the Brief Summary of Duties and considered in the context of the WACHS Values.

### Essential

- 1 Tertiary qualification in Medical Imaging and eligible for registration with the Medical Radiation Practice Board of Australia and licensing with the Radiological Council of WA.
- 2 Sound interpersonal skills and ability to consult and liaise with all staff and the public in delivering Medical Imaging Services.
- 3 Sound decision making, problem solving and innovative skills.
- 4 Working knowledge of Quality Control related x-ray imaging, equipment and processing systems and a willingness to undertake quality improvement activities.
- 5 Excellent understanding and experience of working in a digital imaging environment and an ability to identify simple equipment faults.
- 6 Experience in /or preparedness to undertake training in Computed Tomography.

### Desirable

- 1 Commitment to continuing professional development.
- 2 Previous work experience in a multi-cultural environment.
- 3 Current C Class Drivers License.
- 4 Current knowledge and commitment to Equal Opportunity, Disability Services and Occupational Safety and Health in all aspects of employment and service delivery.

## Appointment Allowances and Pre-requisites

Where applicable – District Allowance, Annual Leave Travel Concession, one-week additional annual leave for above the 26<sup>th</sup> parallel, air-conditioning subsidy

Appointment is subject to:

- Evidence of current registration with the Medical Radiation Practice Board of Australia and licensing with the Radiological Council of WA must be provided prior to commencement
- Provision of the minimum identity proofing requirements
- Successful Criminal Record Screening Clearance
- Successful Pre-Employment Health Assessment
- Successful WA Health Integrity Check
- Successful Working with Children Check

WA Country Health Service – KIMBERLEY

07 November 2022

REGISTERED

