



# Job Description Form



GOLDFIELDS

Landscape Photos: Tourism Western Australia

## Position Title

Position number: 601512

## Health Professional Mental Health

### Regional Overview

The Goldfields region of the WA Country Health Service covers the Goldfields-Esperance Region of Western Australia. The region is located in the south eastern corner of Western Australia and covers 770,488 sq km (including offshore islands). The WA Country Health Service Goldfields consists of two main health campuses located in Kalgoorlie & Esperance, and three smaller hospitals located in Laverton, Leonora and Norseman. The Goldfields is a culturally rich region with a number of Aboriginal communities spread out across the region, 16 distinct Aboriginal language groups and an Aboriginal population that represents 12.3 per cent of our total population, with 1 in 10 people, on average, identifying as Aboriginal – this in comparison to the state average of 3.6 per cent. The region supports a wide range of industry, including mining, agriculture, aquaculture and tourism. Mining is the predominant sector in the central and northern parts of the region, with a well-established agricultural sector in the south.

### About the WA Country Health Service

#### Our Strategic Priorities



#### Our Values

##### Community

We live and work in country communities. We are invested in the health, wellness and viability of country communities and the vibrancy, diversity and future of country WA.

##### Compassion

We are inclusive, respectful, and considerate. We care deeply about the people in our care and country communities.

##### Quality

We provide safe, high-quality care, constantly striving to innovate, improve and achieve trust in our care.

##### Integrity

We bring honesty, collaboration and professionalism to everything that we do.

##### Equity

We are passionate about fairness in healthcare for all Western Australians, especially the most vulnerable and disadvantaged people and communities.

##### Curiosity

We continually enquire and seek to understand, using the best evidence, insight and research to improve care.

#### Our Vision

To be a global leader in rural and remote healthcare.

#### Our Mission

To deliver and advance high quality care for country WA communities.

## Directorate Overview

This team provides specialist mental health services to the Goldfields Region for all age groups. The service aims to deliver a comprehensive range of high quality community focused mental health services to residents of and visitors to the Goldfields Region. Locally based, multi-disciplinary teams are located in regional centres; regular visits are made within the region to meet community needs.

Our Directorate actively supports and encourages diversity and inclusion across all occupational groups through the development and implementation of initiatives aimed at accessing and improving employment and mentoring opportunities for all people. Our strategies are located at [www.wacountry.health.wa.gov.au](http://www.wacountry.health.wa.gov.au)

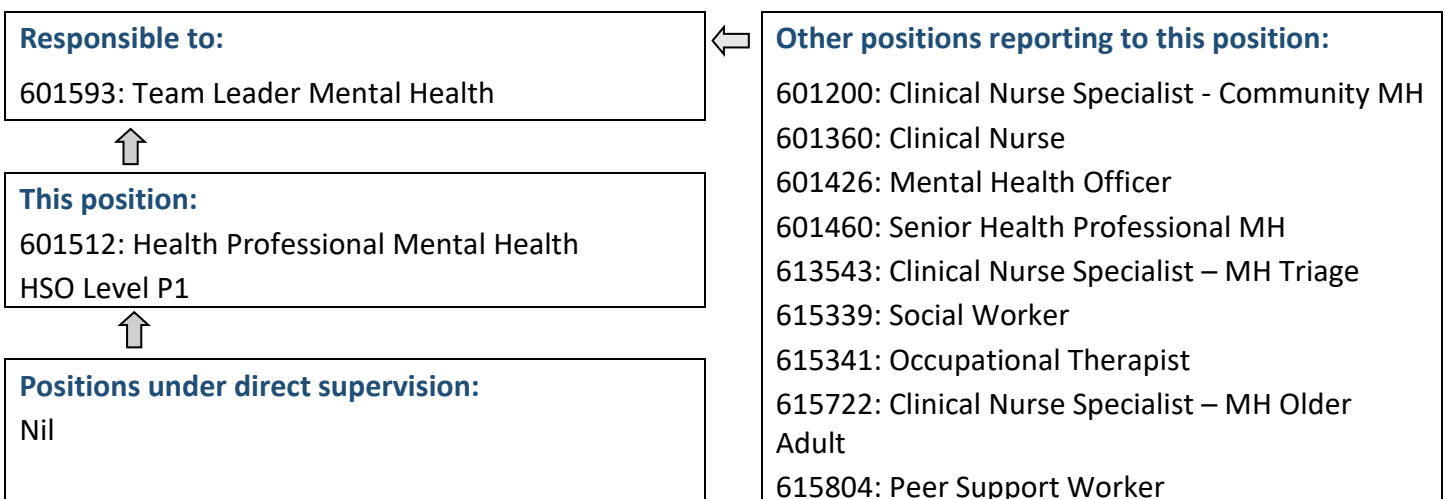
## Position Details

Position Number:	601512	Registration Date:	June 2022
Classification:	HSO Level P1	Location:	Kalgoorlie
Award / Agreement:	Health Salaried Officers Agreement		
Organisational Context:	Community Mental Health		

## Position Overview

Provides specialist community mental health services to adults suffering from mental illness, their families and carers, in the WACHS-Goldfields Region.

## Reporting Relationships



## Key Duties/Responsibilities

### 1. CLINICAL

- 1.1. Conducts comprehensive mental health assessment (including home, hospital and community-based) and develops appropriate treatment and management plans.
- 1.2. Conducts evidence-based intervention and treatment.
- 1.3. Develops management plans in consultation with the client and, as appropriate, their carers/family, GP's and other service providers.
- 1.4. Provides clinical case management services to clients.
- 1.5. Promotes optimum functioning and well-being of the client in the community setting.
- 1.6. Works within the philosophy and requirements of the Mental Health Act (2014).
- 1.7. Participates in service clinical governance processes, including clinical team meetings and clinical review.
- 1.8. In collaboration with senior clinicians, provides educational activities and programs for clients of the service, their carers/family, other professionals and the community.
- 1.9. Participates in health promotion and early intervention programmes.
- 1.10. Works effectively in collaboration with other team members, other professionals and GPs to promote quality mental health care for clients and the community.
- 1.11. Maintains high standards of ethical and professional conduct.
- 1.12. Participates in clinical supervision as required.
- 1.13. Works flexible hours when required with availability for on-call.
- 1.14. Provides outreach services which involves travel to designated areas.

### 2. ADMINISTRATION / QUALITY IMPROVEMENT

- 2.1. Functions as an effective member of the community mental health service through efficient use of resources and active participation in relevant administrative procedures.
- 2.2. Participates in the development, planning and evaluation of mental health services.
- 2.3. Participates in quality improvement initiatives and clinical governance systems.
- 2.4. Maintains accurate and comprehensive clinical records.
- 2.5. Completes statistical and other clinical processes, including compliance with clinical information systems (PSOLIS) and outcomes data collection (NOCC), as required.
- 2.6. Participates in Quality Improvement projects.
- 2.7. Complies with guidelines regarding the use of Departmental equipment and vehicles.

### 3. EDUCATION AND RESEARCH

- 3.1. Promotes the development of clinical skills in other professionals and colleagues.
- 3.2. Accepts responsibility for and participates in own professional development.
- 3.3. Participates in research projects as required.

### 4. OTHER

- 4.1. Other relevant duties as directed.



## Work Related Requirements

The following criteria are to be read together with the Brief Summary of Duties and considered in the context of the WACHS Values.

### Essential

1. Tertiary qualifications in Occupational Therapy, or Psychology or Nursing and eligible for registration with the relevant Board, OR Tertiary qualification in Social Work and eligible for full membership of the Australian Association of Social Workers or the Society of Professional Social Workers.
2. Demonstrated knowledge of emotional, behavioural, psychological and psychiatric disorders of adults.
3. Demonstrated experience in assessment and providing evidence-based interventions for adults with mental health or related disorders, and their families/carers.
4. Demonstrated ability to work as an effective member of a multidisciplinary team and as an independent practitioner.
5. Well-developed communication and interpersonal skills, including the ability to promote positive peer and line management relationships.
6. Demonstrated ability in problem solving, conflict resolution and negotiation
7. Current knowledge of legislative obligations for Equal Opportunity, Disability Services and Occupational Safety and Health, and how these impact on employment and service delivery.
8. Eligible for or in possession of a current C or C-A class driver's licence.

### Desirable

1. Sound knowledge of the key principles of the WA Mental Health Act (2014) and National Standards for Mental Health.
2. Knowledge and understanding of the provision of mental health services within a rural community.
3. Experience in working within a community mental health service setting.

## Appointment Pre-requisites

Appointment is subject to:

- Evidence of registration with the applicable Board of Registration or full membership of the Australian Association of Social Workers or the Society of Professional Social Workers must be provided prior to commencement
- Provision of the minimum identity proofing requirements
- Successful Criminal Record Screening Clearance
- Successful Pre-Employment Health Assessment
- Successful WA Health Integrity Check
- Successful Working With Children Check
- Evidence of a current C or C-A Class driver's licence or other specialised licence class
- Ability to travel within the region as required including overnight stays

WA Country Health  
Service – GOLDFIELDS

10 June 2022

REGISTERED  
Job Description Form

