



Job Description Form



GOLDFIELDS

Landscape Photos: Tourism Western Australia

Position Title

Position number: 613543

Clinical Nurse Specialist – Mental Health Triage

Regional Overview

The Goldfields Health Region of the WA Country Health Service covers the Goldfields-Esperance Region of Western Australia. The region is located in the south eastern corner of Western Australia and covers 770,488km² (including offshore islands). The WA Country Health Service Goldfields consists of two main health campuses located in Kalgoorlie & Esperance, and three smaller hospitals located in Laverton, Leonora and Norseman. The Goldfields is a culturally rich region with a number of Aboriginal communities spread out across the region, 16 distinct Aboriginal language groups and an Aboriginal population that represents 12.3 per cent of our total population, with 1 in 10 people, on average, identifying as Aboriginal – this in comparison to the state average of 3.6 per cent. The region supports a wide range of industry, including mining, agriculture, aquaculture and tourism. Mining is the predominant sector in the central and northern parts of the region, with a well-established agricultural sector in the south.

About the WA Country Health Service

Our Strategic Priorities



Our Values

Community

We live and work in country communities. We are invested in the health, wellness and viability of country communities and the vibrancy, diversity and future of country WA.

Compassion

We are inclusive, respectful, and considerate. We care deeply about the people in our care and country communities.

Quality

We provide safe, high-quality care, constantly striving to innovate, improve and achieve trust in our care.

Integrity

We bring honesty, collaboration and professionalism to everything that we do.

Equity

We are passionate about fairness in healthcare for all Western Australians, especially the most vulnerable and disadvantaged people and communities.

Curiosity

We continually enquire and seek to understand, using the best evidence, insight and research to improve care.

Our Vision

To be a global leader in rural and remote healthcare.

Our Mission

To deliver and advance high quality care for country WA communities.

Position Title: Clinical Nurse Specialist – Mental Health Triage	Position Number: 613543	Classification: SRN Level 3
--	-------------------------	-----------------------------

Directorate Overview

This team provides specialist mental health services to the Goldfields Region for all age groups. The service aims to deliver a comprehensive range of high quality community focused mental health services to residence of and visitors to the Goldfields Region. Locally based, multi-disciplinary teams are located in regional centres; regular visits are made within the region to meet community needs.

Our Directorate actively supports and encourages diversity and inclusion across all occupational groups through the development and implementation of initiatives aimed at accessing and improving employment and mentoring opportunities for all people. Our strategies are located at www.wacountry.health.wa.gov.au

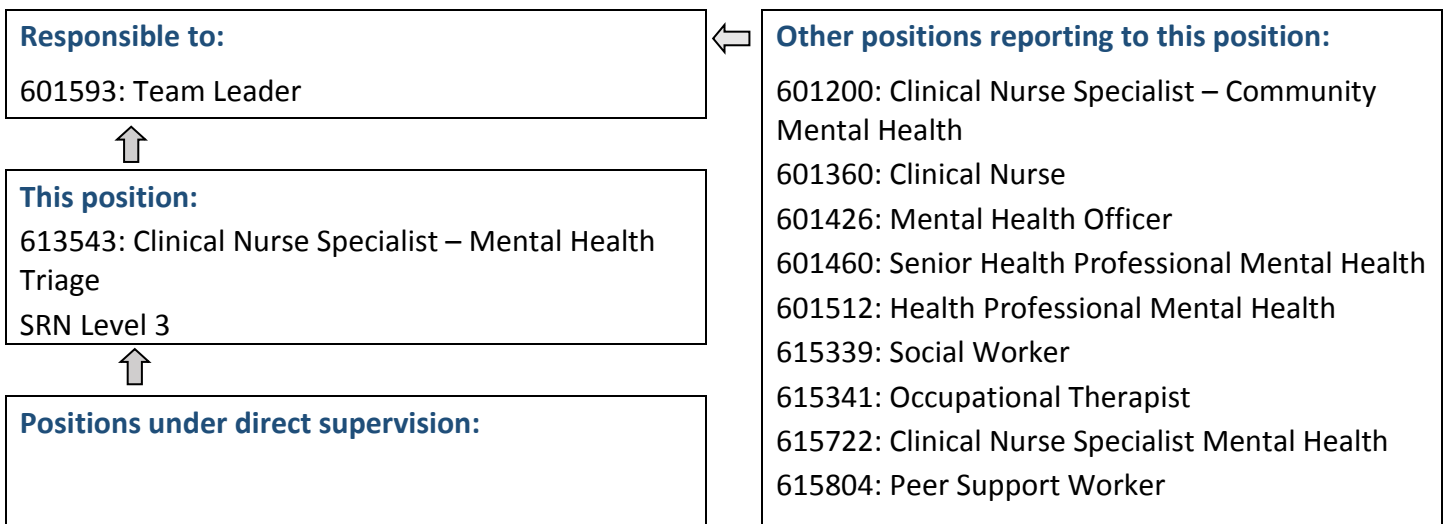
Position Details

Position Number:	613543	Registration Date:	September 2021
Classification:	SRN Level 3	Location:	Kalgoorlie
Award / Agreement:	Nurses and Midwives Agreement		
Organisational Context:	Regional		

Position Overview

Provides comprehensive mental health triage services, nursing leadership, professional consultation and advanced clinical practice within an integrated multi-disciplinary community mental health service.

Reporting Relationships



Key Duties/Responsibilities

1. PROFESSIONAL

- 1.1. Provides and facilitates the delivery of evidence-based specialised mental health services for clients of the service, their carers and families.
- 1.2. Carries out comprehensive triage mental health assessment (including home, hospital and community based) in accordance with recognised principles of professional practice, for children, youth, adults and seniors presenting to the service.
- 1.3. Provides input into clinical case management of complex cases for clients of the service, their carers and families, requiring advanced problem solving strategies.
- 1.4. Develops acute management plans for clients presenting with mental health problems, including initial case management, referral and support services, for clients, carers and their families using advanced problem solving strategies.
- 1.5. Develops and represents the service within an extensive clinical liaison network with Health Services, General Practitioners, Hospitals, and other service providers/community organisations to foster partnerships and shared care arrangements for clients.
- 1.6. Serves as the single point of contact for general practice referrals to the service.
- 1.7. Promotes, participates in, and mentors other clinicians in clinical review and professional supervision sessions as required.
- 1.8. Maintains high-level knowledge in relation to evidence-based practices and current developments in mental health and introduces this knowledge into the clinical governance processes of the service.
- 1.9. Works cooperatively with other staff members of the Mental Health Service to enhance the provision of culturally appropriate mental health services for individuals and families of Aboriginal descent.
- 1.10. Advocates on behalf of consumers and carers as per the National Standards for Mental Health Services.
- 1.11. Develops and provides training programs for other professionals in relation to triage assessment and acute case management of mental health clients.
- 1.12. Assists in the recruitment, selection and induction of clinical staff for the service.
- 1.13. Assists in the implementation and coordination of student placement programs and orientation programs for clinical staff and students as appropriate.
- 1.14. Promotes service compliance with the provisions of the Mental Health Act 2014.
- 1.15. Provides leadership support to the Team Leader as required.

2. ADMINISTRATION AND QUALITY IMPROVEMENT

- 2.1. Provides and maintains accurate records including National Outcomes & case mix data collection via the clinical information system (PSOLIS) as required by the service.
- 2.2. Promotes and participates in the development, planning and evaluation of Mental Health Services, including implementing service standards and/or policies and promoting best practice in relation to the application of the Mental Health Act (2014).
- 2.3. Identifies, initiates and drives continuous quality improvement activities and applies principles in practice.

3. EDUCATION AND RESEARCH

- 3.1. Develops and presents educational and training programs to other professionals and colleagues to promote the development of clinical skills in working with mental health clients.
- 3.2. Accepts responsibility for and participates in own professional development.
- 3.3. Initiates and participates in research projects as required.



4. OTHER

- 4.1. Supervision and workplace leadership of other positions within the mental health team as required by the Regional Manager Mental Health.
- 4.2. Carries out other duties relevant to the position as required.



Work Related Requirements

The following criteria are to be read together with the Brief Summary of Duties and considered in the context of the WACHS Values.

Essential

1. Eligible for registration in the category of Registered Nurse by the Nursing and Midwifery Board of Australia.
2. Demonstrated workplace leadership experience relevant to community mental health practice.
3. Advanced knowledge and understanding of mental disorders.
4. Demonstrated experience in assessment of complex presentations and providing evidence-based interventions for people with mental disorders.
5. Sound knowledge of the Mental Health Act of WA.
6. Highly developed communication and interpersonal skills, including the ability to promote positive peer and line management relationships and work as a member of a multidisciplinary team.
7. Current knowledge of legislative obligations for Equal Opportunity, Disability Services, Occupational Safety and Health and how these impact on employment and service delivery.
8. Current WA C or C-A Class driver's licence and ability to travel within the region including overnight stays as required.

Desirable

1. Knowledge and understanding of the provision of mental health services within a rural community.
2. Ability to educate in both formal and informal settings.

Appointment Pre-requisites

Appointment is subject to:

- Evidence of current registration by the Nursing and Midwifery Board of Australia must be provided prior to commencement
- Provision of the minimum identity proofing requirements
- Successful Criminal Record Screening Clearance
- Successful Pre-Employment Health Assessment
- Successful WA Health Integrity Check
- Successful Working With Children Check
- Evidence of a current C or C-A Class driver's licence or other specialised licence class

WA Country Health Service –
GOLDFIELDS

21 September 2021

REGISTERED
Job Description Form

