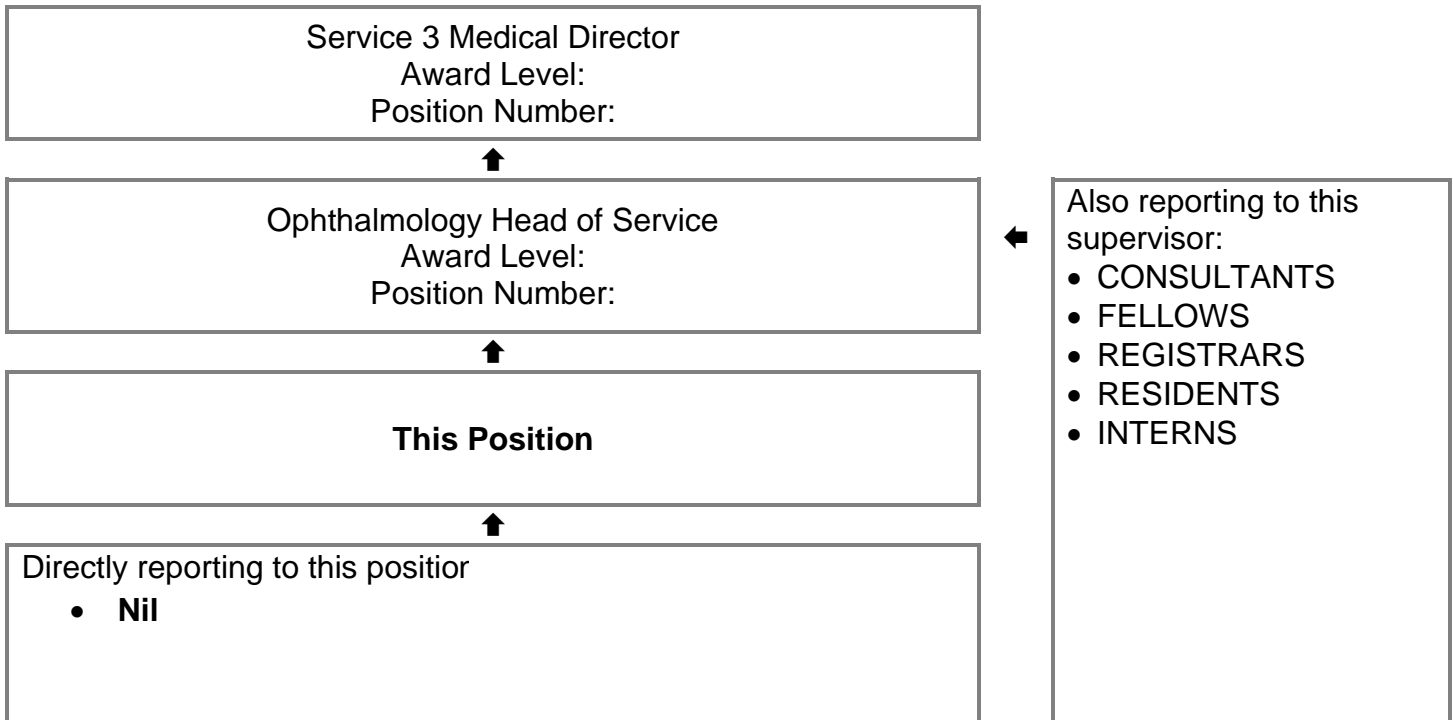




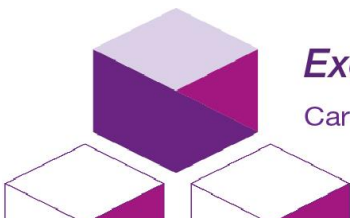
HSS Registered

Fellow Ophthalmic Surgery
 Vitreo-Retinal
Medical Practitioners Agreement: Year 1-2
 Position Number: 00007656
 Ophthalmology
 Fremantle Hospital / South Metropolitan Health Service

Reporting Relationships



Key Responsibilities
 The Vitreo-Retinal Fellow is responsible for undertaking general ophthalmological care of inpatients and outpatients. Assist in the reviewing and reporting on fluorescein angiography, OCT and ultrasonography diagnostic reports under the guidance of the supervising consultants. They will also be required to assist the registrars in the management of inpatient and outpatient cases and contribute to departmental educational sessions for both registrars and residents.



Excellent health care, every time

Care ■ Integrity ■ Respect ■ Excellence ■ Teamwork

SMHS Values

The SMHS considers the values, attributes and attitudes of candidates along with the assessment of competency-based criteria of the position as part of employee recruitment and ongoing performance development.

SMHS is unified across its hospitals and services by its values and behaviours that provide a strong expectation of conduct for all SMHS staff no matter where they work.



Brief Summary of Duties (in order of importance)

1. Clinical

- 1.1 Assists and attends in the management of patients including but not exclusive of outpatient clinics as per rostered.
- 1.2 Assesses and manages complex medical and surgical retina disorders including developing skills in performing retina detachments, ocular trauma and acute medical disorders.
- 1.3 Assists in the teaching of medical students, residents and registrars and participates in hospital postgraduate educational programmes and peer review.
- 1.4 Participates in departmental quality assurance and research activities.

2. SMHS Governance, Safety and Quality Requirements

- 2.1 Commits to undertake the duties of the role in accordance with the WA Health Code of Conduct, the SMHS Vision and SMHS Values of Care, Integrity, Respect, Excellence and Teamwork.
- 2.2 Ensures, as far as practicable, the provision of a safe working environment in consultation with staff under their supervision.
- 2.3 Participates in an annual performance development review and undertakes performance development review of staff under their supervision.
- 2.4 Supports the delivery of safe patient care and the consumers' experience including identifying, facilitating and participating in continuous safety and quality improvement activities, and ensuring services and practices align with the requirements of the National Safety and Quality Health Service Standards and other recognised health standards
- 2.5 Completes mandatory training (including safety and quality training) as relevant to role.
- 2.6 Performs duties in accordance with Government, WA Health, South Metropolitan Health Service and Departmental / Program specific policies and procedures, and applicable legislative obligations under the Public Sector Management Act, the Health Services Act, Occupational Safety and Health Act, the Disability Services Act and the Equal Opportunity Act.

3. Undertakes other duties as directed.

Work Related Requirements

The following criteria should be read together with the Brief Summary of Duties and considered in the context of the role and the SMHS Values.

Essential Selection Criteria

1. Eligible for registration by the Medical Board of Australia.
2. Enrolled or completed advanced training program in Ophthalmology.
3. Demonstrated experience in general ophthalmology.
4. Demonstrated experience in undergraduate and postgraduate teaching.
5. Demonstrated effective interpersonal skills, including the ability to work with and co-ordinate multidisciplinary team, and liaise with all concerned in the medical field.
6. Current knowledge of legislative obligations for Equal Opportunity, Disability Services and Occupational Safety and Health, and how these impact on employment and service delivery.
7. Current "C" or "C.A." class drivers' licence.

Desirable Selection Criteria

1. Research and Teaching experience.
2. Overseas and / or interstate experience.
3. Ability to demonstrate a commitment to the provision of a quality service at a personal and service level.

Appointment Prerequisites

Appointment is subject to:

- Evidence of registration by the Medical Board of Australia must be provided prior to commencement.
- Working with Children (WWC) Check, compulsory check for people who carry out child-related work in Western Australia.
- Provision of minimum identity proofing.
- Successful Criminal Record Screening Clearance.
- Successful Pre-Employment Integrity Check.
- Successful Pre-Employment Health Assessment.
- Evidence of current "C" or "C.A." class drivers' licence.

Certification

The details contained in this document are an accurate statement of the duties, responsibilities and other requirements of the position.

Manager / Supervisor	Signature or	HE Number	Date
Con Anastas		HE57778	19/05/2022
Head of Department Name	Signature or	HE Number	Date

As Occupant of the position I have noted the statement of duties, responsibilities and other requirements as detailed in this document.

Occupant Name	Signature or	HE Number	Date
Effective Date			

HSS Registration Details (to be completed by HSS)

Created on	Last Updated on
------------	-----------------

SMHS Job Description Form