



Job Description Form



GOLDFIELDS

Landscape Photos: Tourism Western Australia

Position Title

Position number: 601014

Registered Nurse

Regional Overview

The Goldfields region of the WA Country Health Service covers the Goldfields-Esperance Region of Western Australia. The region is located in the south eastern corner of Western Australia and covers 770,488 sq km (including offshore islands). The WA Country Health Service Goldfields consists of two main health campuses located in Kalgoorlie & Esperance, and three smaller hospitals located in Laverton, Leonora and Norseman. The Goldfields is a culturally rich region with a number of Aboriginal communities spread out across the region, 16 distinct Aboriginal language groups and an Aboriginal population that represents 12.3 per cent of our total population, with 1 in 10 people, on average, identifying as Aboriginal – this in comparison to the state average of 3.6 per cent. The region supports a wide range of industry, including mining, agriculture, aquaculture and tourism. Mining is the predominant sector in the central and northern parts of the region, with a well-established agricultural sector in the south.

About the WA Country Health Service

Our Strategic Priorities



Our Values

Community

We live and work in country communities. We are invested in the health, wellness and viability of country communities and the vibrancy, diversity and future of country WA.

Compassion

We are inclusive, respectful, and considerate. We care deeply about the people in our care and country communities.

Quality

We provide safe, high-quality care, constantly striving to innovate, improve and achieve trust in our care.

Integrity

We bring honesty, collaboration and professionalism to everything that we do.

Equity

We are passionate about fairness in healthcare for all Western Australians, especially the most vulnerable and disadvantaged people and communities.

Curiosity

We continually enquire and seek to understand, using the best evidence, insight and research to improve care.

Our Vision

To be a global leader in rural and remote healthcare.

Our Mission

To deliver and advance high quality care for country WA communities.

Directorate Overview

This portfolio provides the region with nursing leadership and governance. It also supports the following regional services: cancer care coordination, infection control, palliative care, renal services. Administratively it also has a regional focus on nursing recruitment, safety, quality and risk management.

Our Directorate actively supports and encourages diversity and inclusion across all occupational groups through the development and implementation of initiatives aimed at accessing and improving employment and mentoring opportunities for all people. Our strategies are located at www.wacountry.health.wa.gov.au

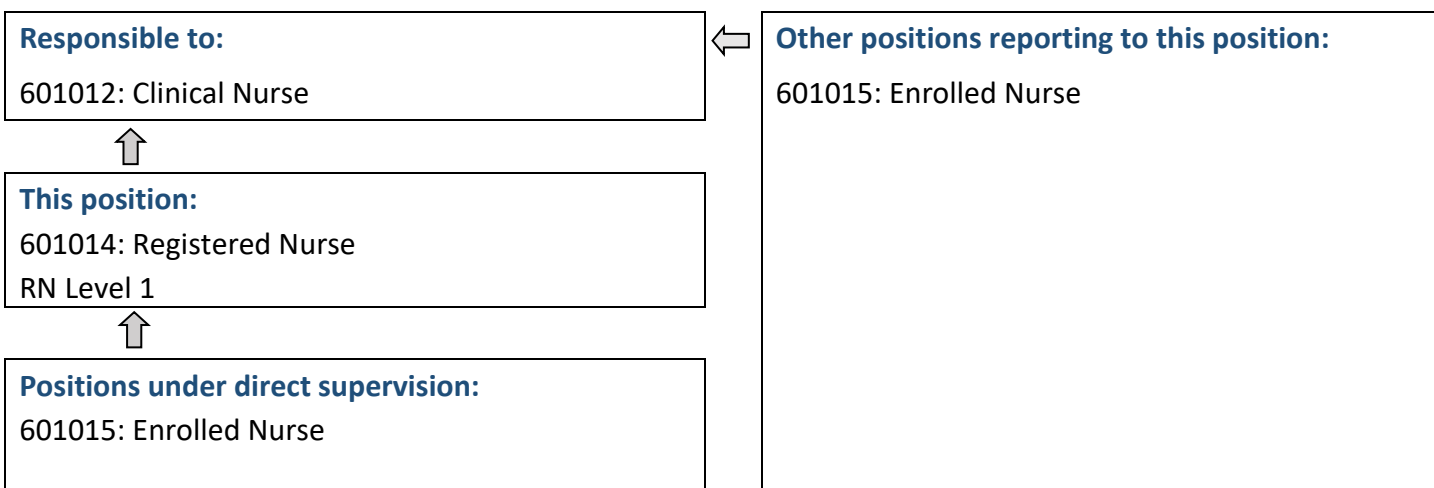
Position Details

Position Number:	601014	Registration Date:	October 2021
Classification:	RN Level 1	Location:	Leonora Hospital
Award / Agreement:	Nurses and Midwives Agreement		
Organisational Context:	Regional		

Position Overview

Performs within the scope of Registered Nurse practise in accordance with WA Country Health Service procedures and policies.

Reporting Relationships



Key Duties/Responsibilities

1. Plans, performs, facilitates and evaluates delivery of patient care.
2. Coordinates the ward/unit as required.
3. Manages a patient caseload as allocated by the shift coordinator.
4. Maintains safe nursing practice and working environment for self and others.
5. Communicate effectively with other health professionals, patient and /or significant others.
6. Participates in the multidisciplinary decision making pertaining to patient care.
7. Applies infection control principles to all aspects of practice.
8. Implements appropriate teaching sessions for patients and carers in collaboration with the Clinical Nurse or Director of Nursing.
9. Assists the Clinical Nurse or Director of Nursing in maintaining the quality and standard of nursing practice within the legal framework.
10. Monitors and ensures availability of supplies and equipment
11. Participates in the performance review of self and others and accepts responsibility for own professional development.
12. Contribute to the orientation, preceptoring and education of staff.
13. Assists the Clinical Nurse or Director of Nursing in the updating and implementation of WACHS policies, site procedures and other documentation related to nursing practice.
14. Actively participates in Quality Management programs at this site.
15. Participates in continuing education designed to improve nursing practice and standard of care.
16. Undertakes other appropriate responsibilities as allocated by the Clinical Nurse or Director of Nursing.



Work Related Requirements

The following criteria are to be read together with the Brief Summary of Duties and considered in the context of the WACHS Values.

Essential

1. Eligible for registration in the category of Registered Nurse by the Nursing and Midwifery Board of Australia.
2. Demonstrated ability to plan and facilitate patient care within emergency dept and ward based settings.
3. Ability to problem solve and accept responsibility for own practice.
4. Effective interpersonal and communication skills.
5. Demonstrated ability to work as part of a team and independently.
6. Knowledge of legislation relevant to nursing practice.
7. Understanding and respect for the needs of Aboriginal culture in providing effective health service delivery to Aboriginal people.
8. Basic understanding of quality improvement activities.
9. Eligible for or in possession of a current C or C-A class driver's licence.

Desirable

1. Recent clinical experience in Emergency Dept.
2. Knowledge of primary health care principles.
3. Current knowledge of legislative obligations for Equal Opportunity, Disability Services and Occupational Safety and Health.

Appointment Pre-requisites

Appointment is subject to:

- Evidence of current registration by the Nursing and Midwifery Board of Australia must be provided prior to commencement
- Provision of the minimum identity proofing requirements
- Successful Criminal Record Screening Clearance
- Successful Pre-Employment Health Assessment
- Successful WA Health Integrity Check
- Successful Working With Children Check
- Successful Aged Care Criminal Record Clearance
- Evidence of a current C or C-A Class driver's licence or other specialised licence class

WA Country Health Service –
GOLDFIELDS

19 October 2021

REGISTERED
Job Description Form

