



Job Description Form



Landscape Photos: Tourism Western Australia

Position Title

Position number: Various

Regional Clinical Pharmacist

Division description

The WA Country Health Service (WACHS) is the largest country health system in Australia and one of the biggest in the world, providing health services to over half a million people, including over 50,000 Aboriginal people, over a vast two and a half million square kilometres area. WA Country Health Service hospitals handle almost as many births as the State's major maternity hospital, and 40% of the State's emergency presentations. The range of health services provided include acute inpatient and emergency care, population and public health, cancer services, mental health, Aboriginal health, aged care and includes increasing number of services provided by telehealth video-conferencing. Our dedicated and committed staff work hard to fulfil our vision of Healthier country communities through partnerships and innovation, to deliver health services that support the health and well-being of individuals and communities in rural and remote Western Australia.

About the WA Country Health Service

Our Strategic Priorities



Our Vision

To be a global leader in rural and remote healthcare.

Our Values

Community

We live and work in country communities. We are invested in the health, wellness and viability of country communities and the vibrancy, diversity and future of country WA.

Compassion

We are inclusive, respectful, and considerate. We care deeply about the people in our care and country communities.

Quality

We provide safe, high-quality care, constantly striving to innovate, improve and achieve trust in our care.

Integrity

We bring honesty, collaboration and professionalism to everything that we do.

Equity

We are passionate about fairness in healthcare for all Western Australians, especially the most vulnerable and disadvantaged people and communities.

Curiosity

We continually enquire and seek to understand, using the best evidence, insight and research to improve care.

Our Mission

To deliver and advance high quality care for country WA communities.

Directorate overview

WACHS Pharmacy Services is comprised of a diverse workforce who support the planning, delivery and evaluation of medicines management across country WA. The workforce is a combination of WACHS-wide and regional specific roles. Led by the Chief Pharmacist and the seven Regional Chief Pharmacists, WACHS Pharmacy Services is committed to excellence in medicines management across regional Western Australia. Our vision is to ensure that our patients receive the same high level and safe care as their metropolitan counterparts and is to be world leaders in the provision of regional and remote medicines management.

WACHS are committed to partnering with communities, utilising innovative technology and a skilled workforce to bring excellent pharmacy services close to home for country people. Our Directorate actively supports and encourages diversity and inclusion across all occupational groups through the development and implementation of initiatives aimed at accessing and improving employment and mentoring opportunities for all people.

Our strategies are located at www.wacountry.health.wa.gov.au

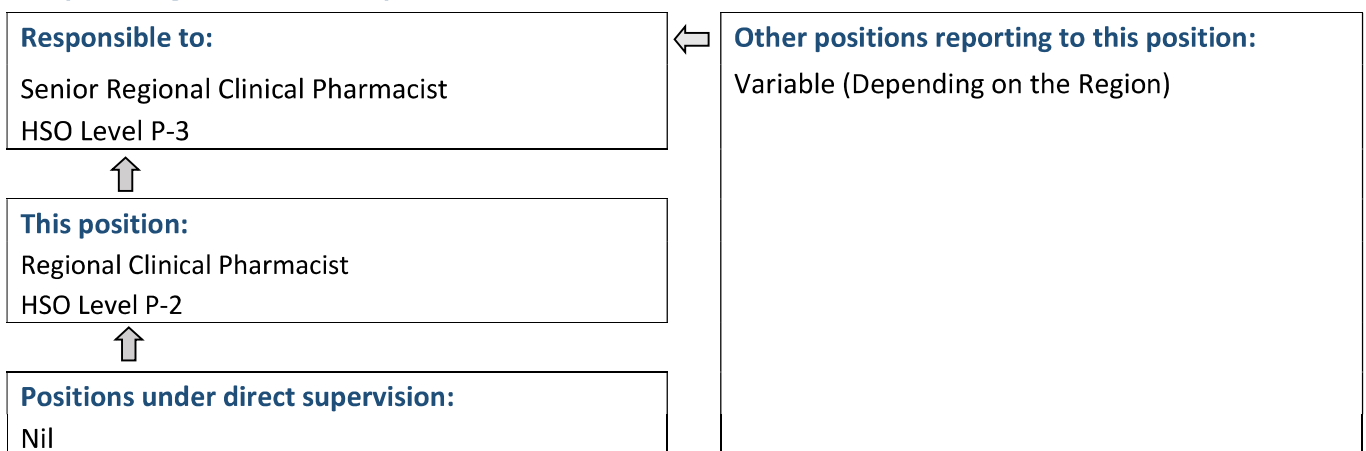
Position Details

| | | | |
|-------------------------|------------------------------------|--------------------|---------------|
| Position Number: | Various | Registration Date: | 16 March 2022 |
| Classification: | HSO Level P-2 | Location: | WACHS regions |
| Award / Agreement: | Health Salaried Officers Agreement | | |
| Organisational Context: | Medical Services - Pharmacy | | |

Position Overview

Assists in the promotion of safe, rational and cost effective drug therapy through the provision of clinical pharmacy services for hospital patients throughout the region. The services provided are to include but are not limited to completing the medication reconciliation process for admitted hospital patients, dispensing medications to patients, providing drug information to regional nursing and medical staff and making independent decisions on therapeutic strategies to optimize patient care.

Reporting Relationships



Key Duties/Responsibilities

1. CLINICAL PHARMACY

- 1.1. Provide clinical pharmacy services at an advanced practice level to WACHS patients within the region.
- 1.2. Responsible for facilitating completion of the medication history and reconciliation process for all high risk admitted patients.
- 1.3. Participates in ward/clinic medical rounds providing professional pharmacy advice to medical, nursing & allied health staff regarding the patient's medication profile.
- 1.4. Provides medication counselling and drug information to patients on discharge, including the provision of a medication summary and input into a multidisciplinary care plan.
- 1.5. Ensures prescribing of all medications conforms to legal and hospital requirements.
- 1.6. Provides pharmacy services to other health service sites in the region, including for outreach and outpatient clinics as required.
- 1.7. Controls the correct supply, handling, storage and administration of drugs in clinical areas by advising nursing staff on the proper handling, security and administration of drugs and supporting the Pharmacy in the evaluation of ward imprest lists.
- 1.8. Dispenses prescriptions, showing due regard for the problems of drug disposition, interactions, adverse reactions, toxicity, dosage, formulation, patient compliance and costs.

2. ADMINISTRATIVE

- 2.1. Assists in the management of clinical pharmacy services within the region including planning, coordination, visiting and evaluation of service in collaboration with the Senior Regional Clinical Pharmacist and Chief Pharmacist.
- 2.2. Assists in the formulation and implementation of all policies and procedures relating to pharmaceutical services for the region in collaboration with the Senior Regional Clinical Pharmacist and Chief Pharmacist.
- 2.3. Assists in the investigation of new developments in pharmacy that may benefit the patient and hospital service.
- 2.4. Assists as a contact person for all pharmaceutical matters in the region.
- 2.5. Assists in supervision of Pharmacy students.
- 2.6. Participates in Quality Improvement and research activities as required.

3. OTHER

- 3.1. Undertakes rostered shifts and rotations in the Department/Unit at the direction of the Chief Pharmacist including participation in the after-hours/weekend/public holiday roster as required.
- 3.2. Attends meetings as required.
- 3.3. Performs duties in accordance with relevant Occupational Health and Safety and Equal Opportunity Legislation.
- 3.4. Maintains and develops professional skills.
- 3.5. Performs duties in accordance with Government, WA Health, WA Country Health Services, Regional and Department specific Policies and Procedures.
- 3.6. Assists with ordering, receipt, stock control, dispensing and drug supply services within the Pharmacy.
- 3.7. Other duties as directed by the Chief Pharmacist.



Work Related Requirements

The following criteria are to be read together with the Brief Summary of Duties and considered in the context of the WACHS Values.

Essential

1. Tertiary qualification in Pharmacy and eligible for registration by the Pharmacy Board of Australia
2. Current and relevant hospital pharmacy experience
3. Demonstrated knowledge and advanced practice skills applicable to hospital pharmacy services, including clinical pharmacy, drug distribution, dispensing, medication counselling, drug information and education
4. Well developed written and verbal communication and interpersonal skills and ability to work effectively in a multidisciplinary team environment
5. Sound knowledge of relevant legislation regulating the profession of pharmacy
6. Commitment to continuing professional development
7. Eligible for / or in possession of a current C or C-A Class drivers licence

Desirable

1. Relevant post graduate qualifications
2. Current knowledge and commitment to Equal Opportunity in all aspects of employment and service delivery
3. Knowledge and skills in computing systems, especially those relevant to hospital pharmacy and therapeutics.
4. Active participation in the affairs of relevant professional associations.

Appointment Pre-requisites

Appointment is subject to:

- Evidence of current registration by the Pharmacy Board of Australia must be provided prior to commencement
- Provision of the minimum identity proofing requirements
- Successful Criminal Record Screening Clearance
- Successful Pre-Employment Health Assessment
- Successful WA Health Integrity Check
- Successful Working With Children Check
- Evidence of a current C or C-A Class driver's licence

WA Country Health Service
Central Office

16 March 2022
REGISTERED

