



Job Description Form

Community | Compassion | Quality

Integrity | Equity | Curiosity

Position Title

Position number: Various

Consultant Paediatrician

WA Country Health Service

Our mission is to deliver and advance high quality care for country communities.

We are here to improve country people's health and well-being, to care for the sick and to ensure that country communities can access high quality healthcare.

We aim to deliver services that meet or exceed standards and advance health outcomes for country communities. While we are proud of the services staff deliver, we know that there is scope for us to grow and improve. We want to be at the forefront of the new wave of healthcare, establishing ourselves as a global leader in regional and remote healthcare.

About the WA Country Health Service

Our Strategic Priorities



Our Values

Community

We live and work in country communities. We are invested in the health, wellness and viability of country communities and the vibrancy, diversity and future of country WA.

Compassion

We are inclusive, respectful, and considerate. We care deeply about the people in our care and country communities.

Quality

We provide safe, high-quality care, constantly striving to innovate, improve and achieve trust in our care.

Integrity

We bring honesty, collaboration and professionalism to everything that we do.

Equity

We are passionate about fairness in healthcare for all Western Australians, especially the most vulnerable and disadvantaged people and communities.

Curiosity

We continually enquire and seek to understand, using the best evidence, insight and research to improve care.

Our Vision

To be a global leader in rural and remote healthcare.

Our Mission

To deliver and advance high quality care for country WA communities.

Position Title: Consultant - Paediatrician	Position Number: Various	Classification: MP Year 1-9 or Year 1 – 6 (depending on location)
--	--------------------------	---

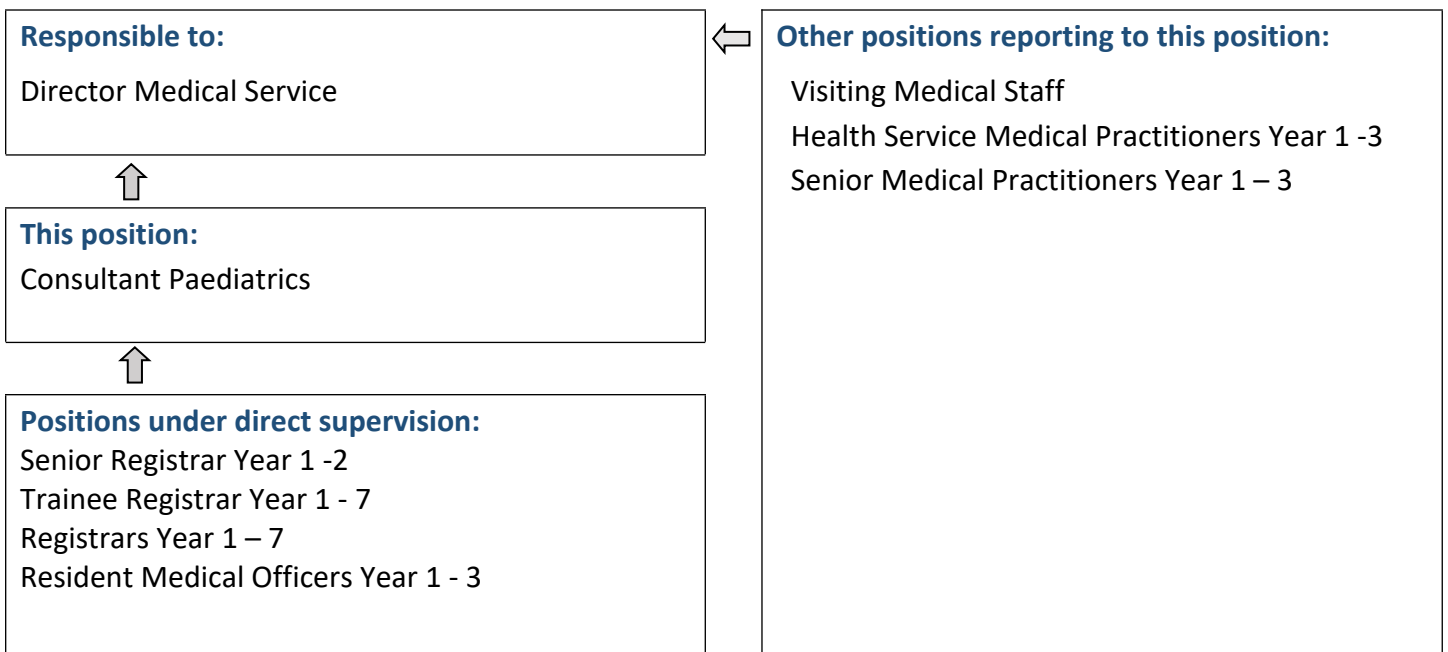
Position Details

Position Number:	Various	Registration Date:	01/11/2021
Classification:	Consultant Year 1 - 9 or Consultant Year 1 – 6 (depending on location)	Location:	Various
Award / Agreement:	WA HEALTH SYSTEM – MEDICAL PRACTITIONERS – AMA INDUSTRIAL AGREEMENT 2016		
Organisational Context:	Medical Services		

Position Overview

- Provides a high standard of evidence based paediatric clinical care to in-patient, outpatient and community based developmental services for patients of WA Country Health Service.
- Participates in continued medical education and quality management and provides education support to colleagues and other staff.
- Support the Head of Paediatrics in future Paediatric and neonates service development including supporting a strong positive, collaborative culture.
- Provides a leadership role in service development and supporting and teaching non-specialist clinical staff working with children and their families.

Reporting Relationships



Key Duties/Responsibilities

1. CLINICAL

- 1.1. Functions as a Specialist Paediatrician undertaking direct clinical care of general paediatric, neonatal and developmental patients within the region.
- 1.2. Provide leadership within the regions Integrated Paediatric Service in the provision of high quality evidence based services to children and their families.
- 1.3. Participates in training and supervision of Medical Practitioners (including General Practitioners and Registrars), Resident Medical Officers, Interns and medical students.
- 1.4. Provides training to other healthcare professionals as appropriate.
- 1.5. Provides a paediatric consultancy service for healthcare and other professionals providing care to children across the region.
- 1.6. Participates in an on-call and after-hours paediatrics roster.
- 1.7. Liaises with clinical staff, heads of departments and other agencies on professional issues and patient management.
- 1.8. Participates in interdisciplinary case conferences.

2. PROGRAM DEVELOPMENT AND ADMINISTRATION

- 2.1. Assists in program development, implementation and evaluation of the Regions Integrated Paediatric Service.
- 2.2. Liaises with Great Southern Health Service units and external agencies to promote the development of integrated inter-agency child health services.
- 2.3. Maintains knowledge of current research techniques and theories and participates in the development and implementation of program evaluation and research projects.
- 2.4. Participates in the development and implementation of Quality Improvement activities, clinical risk management activities and paediatric protocols.
- 2.5. Provides and maintains data required for electronic and other record keeping purposes in accordance with Australian Council on Healthcare Standards.
- 2.6. Complies with Occupational Health and Safety and Equal Opportunity principles and other relevant legislation and standards particularly those related to mandatory reporting of suspected child abuse.
- 2.7. Participates in the development of education programs.

3. OTHER

- 3.1 Other duties as directed.
- 3.2 Performs duties in accordance with WA Country Health Service and program specific policies and procedures.

Work Related Requirements

The following criteria are to be read together with the Brief Summary of Duties and considered in the context of the WACHS Values.

Essential

1. Eligible for registration by the Medical Board of Australia.
2. Fellowship of the Royal Australasian College of Physicians (Paediatrics and Child Health) or equivalent that is recognised for registration as a specialist with the Medical Board of Australia.
3. Demonstrated ability to provide acute and neonatal paediatrics services.
4. Demonstrated ability to provide community paediatric services including developmental and behavioural paediatrics.

Desirable



1. Contemporary knowledge of and skills in the assessment and management of children with developmental disorder and delay, including ability to administer Griffiths Developmental test and licenced to prescribe stimulants.
2. Experience in Child Protection and Sexual Abuse management

Appointment Pre-requisites

Appointment is subject to:

- Evidence of registration by the Medical Board of Australia must be provided prior to commencement
 - Evidence of fellowship with the Royal Australasian College of Physicians (Paediatrics and Child Health) or equivalent that is recognised for registration as a specialist with the Medical Board of Australia.
 - Provision of the minimum identity proofing requirements
 - Successful Criminal Record Screening Clearance
 - Successful Pre-Employment Health Assessment
 - Successful WA Health Integrity Check
 - Successful Working With Children Check
 - Completion of training for Mandatory Reporting of Child Sexual Abuse
 - Evidence of a current C or C-A Class driver's licence or other specialised licence class
- Allowances
- Participation in an on call roster

