



# Job Description Form



Community | Compassion | Quality



Integrity | Equity | Curiosity

## Position Title

Position number: Various

## Consultant Emergency Medicine

### WA Country Health Service

*Our mission is to deliver and advance high quality care for country communities.*

*We are here to improve country people's health and well-being, to care for the sick and to ensure that country communities can access high quality healthcare.*

*We aim to deliver services that meet or exceed standards and advance health outcomes for country communities. While we are proud of the services staff deliver, we know that there is scope for us to grow and improve. We want to be at the forefront of the new wave of healthcare, establishing ourselves as a global leader in regional and remote healthcare.*

### About the WA Country Health Service

#### Our Strategic Priorities



#### Our Vision

To be a global leader in rural and remote healthcare.

#### Our Values

##### Community

We live and work in country communities. We are invested in the health, wellness and viability of country communities and the vibrancy, diversity and future of country WA.

##### Compassion

We are inclusive, respectful, and considerate. We care deeply about the people in our care and country communities.

##### Quality

We provide safe, high-quality care, constantly striving to innovate, improve and achieve trust in our care.

##### Integrity

We bring honesty, collaboration and professionalism to everything that we do.

##### Equity

We are passionate about fairness in healthcare for all Western Australians, especially the most vulnerable and disadvantaged people and communities.

##### Curiosity

We continually enquire and seek to understand, using the best evidence, insight and research to improve care.

#### Our Mission

To deliver and advance high quality care for country WA communities.

Position Title: Consultant – Emergency Medicine	Position Number: Various	Classification: MP Year 1-9 or Year 1 – 6 (depending on location)
---	--------------------------	---

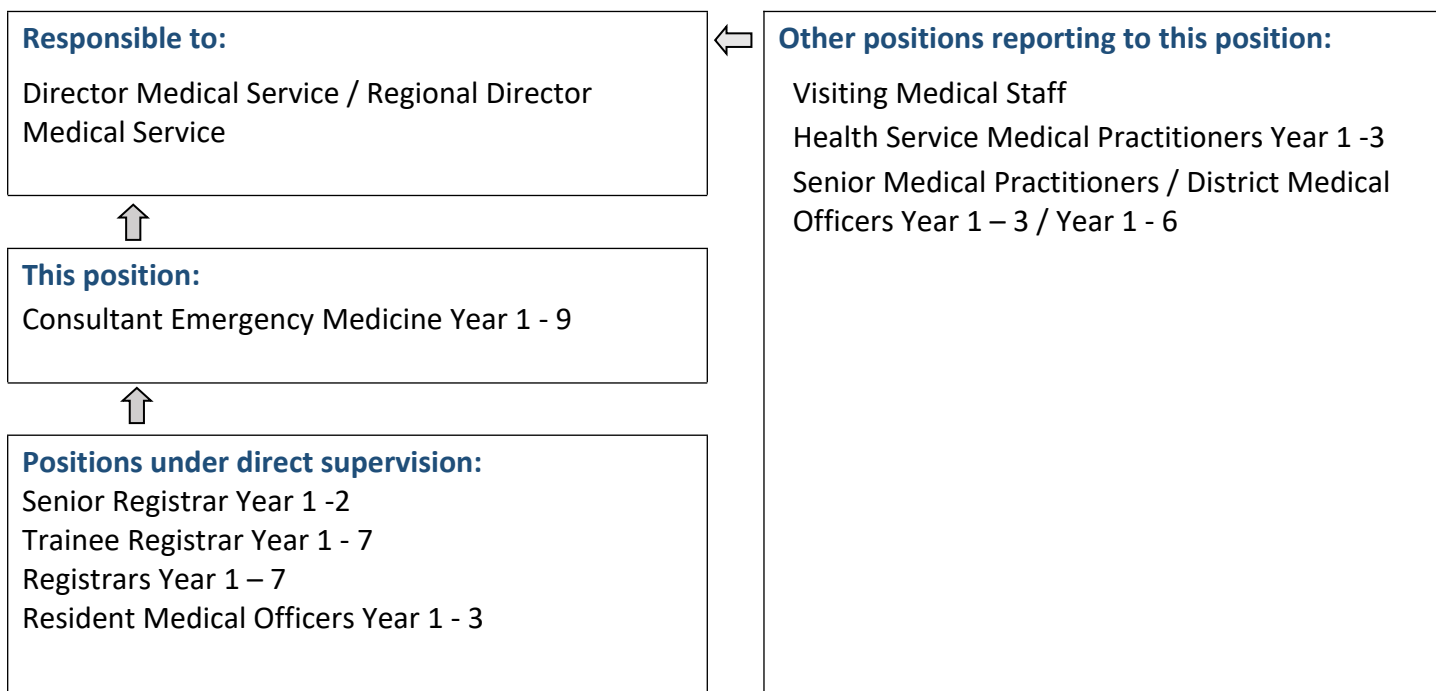
## Position Details

Position Number:	Various	Registration Date:	21/02/2022
Classification:	Consultant Year 1 - 9 or Consultant Year 1 – 6 (depending on location)	Location:	Various
Award / Agreement:	WA HEALTH SYSTEM – MEDICAL PRACTITIONERS – AMA INDUSTRIAL AGREEMENT 2016		
Organisational Context:	Medical Services		

## Position Overview

- Responsible for the provision of a comprehensive clinical service in emergency medicine to Patients of WA Country Health Service.
- Lead a multi-disciplinary team which provides comprehensive emergency services to patients of the WA Country Health Service.
- Promotes patient quality and safety within the emergency department.
- Provides leadership, management, training, supervision and education for Senior Medical Practitioners, Interns, Resident Medical Officers and Registrars in collaboration with the Director of Medical Services.

## Reporting Relationships



## Key Duties/Responsibilities

### 1. CLINICAL

- 1.1. Provides clinical management of emergency medicine patients utilising evidence based practice.
- 1.2. Assist with Australian Triage Standards and National Emergency Access Target requirements when clinically safe.
- 1.3. Leads, supervises, coordinates and manages the care of patients with life threatening conditions, including multiple traumas.
- 1.4. Participates fully in the Emergency Medicine Consultant roster including on call as rostered.
- 1.5. Provides clinical services as determined appropriate for a 24 hour emergency service, including telephone or videoconference consultations and advice to WA Country Health staff onsite.
- 1.6. Maintains quality patient medical records in accordance with health service protocols.
- 1.7. Fully supports electronic clinical systems and promote and educate the use of Notification And Clinical Summary (NAC's) discharge summaries and communication of patient information to health care providers.
- 1.8. Liaises with members of the health care team and private practitioners to meet the needs of patients under their care.
- 1.9. Responsible for a portfolio as directed by the Director of Medical Services.
- 1.10. Supports medical colleagues and nursing colleagues in the performance of their clinical duties.

### 2. CLINICAL ADMINISTRATION

- 2.1. Ensures the ongoing application of continuous quality improvement principles in systematically evaluating and meeting customer needs.
- 2.2. Ensures compliance with relevant standards, legislation and regulatory requirements.
- 2.3. Liaises with members of the health care team and the private sector to meet the needs of patients under their care and maintain a customer-focused approach.
- 2.4. Participates in governance-led departmental and doctor's committee meetings as required, such as Medical Advisory Committee meetings, Emergency Medicine Clinical Governance meetings and mortality and morbidity meetings.
- 2.5. Actively participates in service development activities eg: Medical Emergency Team, Medical Emergency Response.
- 2.6. Attends to medico-legal issues that arise concerning patients that have been under their care and advises the Director of Medical Services.
- 2.7. Assists the DMS with complaints management as required.

### 3. EDUCATION

- 3.1. Acts as a role model and mentor to medical students and medical colleagues during their placement.
- 3.2. Supervises junior medical staff, including the assessment of staff performance in relation to clinical competence, adherence to departmental protocols, timely and accurate documentation, communication with patients, relatives, peers, other staff and doctors in other hospitals and in the community.
- 3.3. Participates in professional educational activities, regular performance review and provides evidence of maintaining current knowledge and skills.
- 3.4. Participates in post-graduate and under-graduate training programs for junior medical staff, trainees and medical students.
- 3.5. Supervises guide and teaches nursing, allied health and other support staff as appropriate.
- 3.6. Participates in departmental academic activities and mandatory essential training and skills.

### 4. LEADERSHIP

- 4.1. Demonstrates professional standards and ethics as appropriate to the seniority and leadership role of clinical staff and according to WA Country Health Service Code of Conduct.





Position Title: Consultant – Emergency Medicine	Position Number: Various	Classification: MP Year 1-9 or Year 1 – 6 (depending on location)
---	--------------------------	---

- 4.2. Demonstrates excellence in interpersonal skills when dealing with patients, colleagues, nursing, allied health and support staff.
- 4.3. Participates in doctor's clinical meetings and quality improvement and audit activities. These include the departments Morbidity, Mortality and Peer review activities, the hospitals contribution to the Clinical Incident Management Policy (CIM) and other clinical governance activities as directed.
- 4.4. Participates in WA Country Health Service planning, strategy and practices.
- 4.5. Develop, implement and monitor Quality Assurance measures.
- 4.6. Assessment of subordinate medical staff performance in relation to clinical competence, adherence to departmental protocols, timely and accurate documentation, communication with patients, relatives, peers and other medical colleagues in other hospitals and in the community.

## 5. OTHER

- 5.1. Perform other duties as directed by the Director of Medical Services.

## Work Related Requirements

The following criteria are to be read together with the Brief Summary of Duties and considered in the context of the WACHS Values.

### Essential

1. Eligible for registration by the Medical Board of Australia.
2. Fellowship of the Royal Australasian College of Emergency Medicine or equivalent that is recognised for registration as a specialist with the Medical Board of Australia.
3. Possess substantial postgraduate medical experience in emergency medicine and hospital practice.
4. Demonstrated capacity to work effectively and to lead in a team environment.

### Desirable

1. Demonstrated experience and ability to foster strong relationships between general practice, emergency medicine and other stakeholders.
2. Experience in rural area medicine and Indigenous Health.

## Appointment Pre-requisites

Appointment is subject to:

- Evidence of registration by the Medical Board of Australia must be provided prior to commencement
- Evidence of fellowship with the Royal Australasian College of Emergency Medicine or equivalent that is recognised for registration as a specialist with the Medical Board of Australia.
- Provision of the minimum identity proofing requirements
- Successful Criminal Record Screening Clearance
- Successful Pre-Employment Health Assessment
- Successful WA Health Integrity Check
- Successful Working With Children Check
- Completion of training for Mandatory Reporting of Child Sexual Abuse
- Evidence of a current C or C-A Class driver's licence or other specialised licence class
- Allowances
- Participation in an on call roster

