



HSS REGISTERED

Clinical Psychologist

Position Details

Position Number: 00012864
Classification: Grade 2
Agreement: Health Salaried Officers Agreement
Directorate: Youth Mental Health
Department: Youth Hospital in the Home
Location: Graylands Hospital

Reporting Relationships

This position reports to:

00013796	Clinical Nurse Manager	SRN4
----------	------------------------	------

Positions under direct supervision:

N/A.

Primary Purpose of the Role

Performs a clinical, consultant, education and research psychology service with individuals, couples, families, groups, other professionals and organisational systems within a multidisciplinary and professional team context. Provides supervision to clinical psychology registrars/trainees.



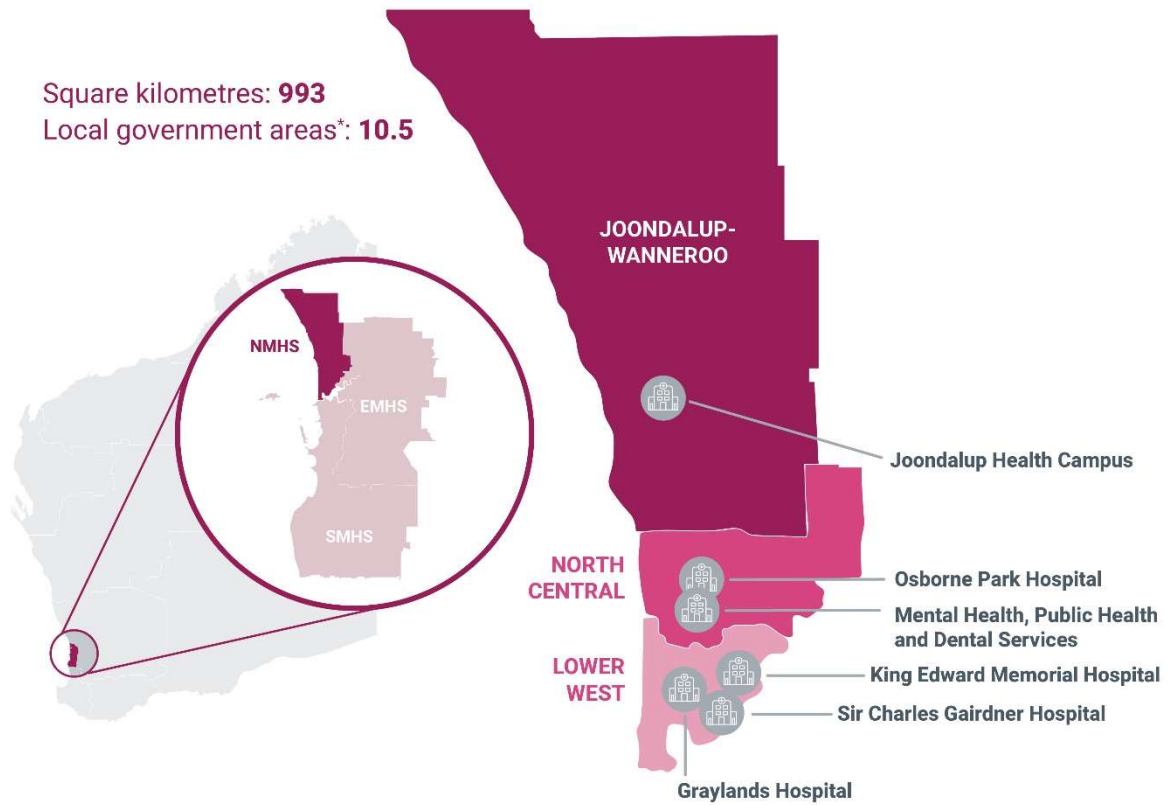
Vision

A trusted partner, delivering excellent health care for our people and our communities.



Mission

To promote and improve the health of our people and our communities.



North Metropolitan Health Service

Since our establishment in 2016, NMHS has embraced best practice to deliver improved clinical outcomes in the face of rising challenges for all healthcare providers. With a budget of \$2.16 billion and 8,917 full-time equivalent (FTE) staff, we serve a population of 736,907 people (about 28% of Western Australia's total population) within a catchment area of almost 1,000 square kilometres. The population we serve is projected to increase by 17% between 2021 and 2031, and the number aged 65 years and older will increase by 41% over the same period. NMHS provides a comprehensive range of adult specialist medical, surgical, mental health and obstetric services in WA, delivered across three tertiary hospitals and two secondary hospitals, all fully accredited. NMHS oversees the provision of contracted public health care from Joondalup Health Campus operated under a public-private partnership. A range of statewide, highly specialised multidisciplinary services is offered from several NMHS hospital and clinic sites.

Our values



Care

We show empathy, kindness and compassion to all.



Respect

We are inclusive of others and treat everyone with courtesy and dignity.



Innovation

We strive for excellence and are courageous when exploring possibilities for our future.



Teamwork

We work together as one team in a spirit of trust and cooperation.



Integrity

We are honest and accountable and deliver as promised.

Please refer to [NMHS Values – Organisational/Individual Behaviours](#) for information on individual behaviours that reflect the organisation's values.

Our strategic priorities

We are focussing on six strategic priorities for the 2020-2025 period:



Enabling healthy communities

We build healthy and engaged communities



People-centred care

We will place our consumers' and their carers' best interests and experience at the core of all we do



Integration and connection

We will build strong connections and partnerships



Innovation and adaptive models of care

We will use research and technology to improve outcomes



Trusted, engaged and capable people

We will invest in our people and our culture



Sustainable and reliable

We will reduce harm, waste and unwarranted variation



Key Accountabilities

1. Clinical Service, Research and Evaluation

- 1.1 Undertakes advanced individual, couple, family, group and community interventions e.g. behaviour therapy, family therapy, systemic interventions, counselling and psychotherapy to a designated caseload of young people living with, or at risk of developing, a mental health disorder.
- 1.2 Performs specialist psychological assessments to appraise cognitive, emotional, behavioural and family functioning utilising interviews, behavioural observations, psychometric and psycho diagnostic assessments and evaluation of systems to develop formulations and recommendations regarding the treatment for young people.
- 1.3 Participates in the multidisciplinary team, including clinical and administrative meetings, in which case management and treatment planning decisions are determined.
- 1.4 Liaises with multidisciplinary team and with other government and non-government agencies regarding management of mutual clients.
- 1.5 Develops and undertakes research of an applied clinical and evaluative nature subject to identified service needs.
- 1.6 Ensures the rights of consumers and carers are maintained according to the National Standards for Mental Health Services.

2. Education, Consultation and Supervision

- 2.1 Develops implements and evaluates education and training programs in recognising and responding to mental health problems for health and welfare staff and youth workers providing services for young people.
- 2.2 Provides consultative advice and support, and informs the practice of health and welfare staff and youth workers in recognising and responding to youth mental health problems.
- 2.3 Supervises Clinical Psychologist Registrars for endorsement in Clinical Psychology with the Psychologists Board of Australia as required in consultation with the Senior Clinical Psychologist Lead Senior.
- 2.4 Develops and extends own professional knowledge through participation in approved activities, workshops and/or seminars.
- 2.5 Participates in performance review, development and quality assurance activities

3. General Administration

- 3.1 Maintains records and statistics in accordance with established procedures and accepts responsibility for mandatory data collection including National Outcome and Casemix Collection (NOCC).
- 3.2 Participates in program and service development, research and quality activities including design, implementation and evaluation.
- 3.3 Functions in accordance with relevant policies and adheres to governing legislation including the WA Mental Health Act 2014.
- 3.4 Reports all incidents required in the mandatory reporting of sentinel adverse events.



4. Community Development

4.1 Liaises with and supports various organisations, groups and working groups to facilitate service delivery to “at-risk” youth across the spectrum of intervention (universal primary prevention through to case management and treatment).

5. NMHS Values: *Care, Respect, Innovation, Teamwork, Integrity*

5.1 Reflect the NMHS values in the way you work, behave and make decisions.

6. NMHS Governance, Safety and Quality Requirements

6.1 Participates in the maintenance of a safe work environment.

6.2 Participates in an annual performance development review.

6.3 Supports the delivery of safe patient care and the consumers’ experience including participation in continuous quality improvement activities in accordance with the requirements of the National Safety and Quality Health Service Standards and other recognised health standards.

6.4 Completes mandatory training (including safety and quality training) as relevant to role.

6.5 Performs duties in accordance with Government, WA Health, North Metropolitan Health Service and Departmental / Program specific policies and procedures.

6.6 Abides by the WA Health Code of Conduct, Occupational Safety and Health legislation, the Disability Services Act and the Equal Opportunity Act.

7. Undertakes other duties as directed.



Work Related Requirements

The following criteria should be considered in the context of the NMHS Vision, Mission and Values.

Essential Selection Criteria

1. Masters or Doctoral degree in Clinical Psychology and eligibility for full registration and endorsement in Clinical Psychology with the Psychology Board of Australia.
2. Extensive knowledge of evidenced based psychological theories, models, clinical practices and research methods for working with young people living with, or at risk of developing serious mental health disorders, including those experiencing homelessness.
3. Demonstrated ability to provide clinical assessments, psychotherapy and other clinical psychological interventions for young people living with, or at risk of developing a mental health disorder.
4. Substantial experience in service evaluation and analysis.
5. Demonstrated ability to work in a multi-disciplinary team including highly developed oral and written communication skills.
6. Demonstrated capacity to function independently, under general to limited direction, in a variety of roles e.g. clinician, consultant, teacher, researcher/evaluator and agent of change.
7. Knowledge of the WA Mental Health Act 2014 and the laws and ethical standards governing psychological practice.
8. Current "C" or "C.A." class drivers licence.

Desirable Selection Criteria

1. Current knowledge of appropriate resources and services for young people with serious mental health disorders and/or significant psychosocial issues.
2. Relevant knowledge and experience in one or more of the following specialty areas: Early Intervention with Psychosis and/or Borderline Personality Disorder and CALD, Addictions, Sexuality/Sexual Health, Indigenous Populations, and Family Therapy.
3. Current knowledge and commitment to Equal Opportunity in all aspects of employment and service delivery.

Appointment Prerequisites

Appointment is subject to:

- Evidence of current full registration by the Psychology Board of Australia must be provided prior to commencement.
- Evidence of Current "C" or "C.A." class driver's licence provided prior to commencement.
- Working With Children (WWC) Check, compulsory check for people who carry out child-related work in Western Australia.
- Provision of the minimum identity proofing requirements.
- Successful Criminal Record Screening Clearance.
- Successful Pre-Employment Integrity Check.
- Successful Pre-Employment Health Assessment.

Certification

The details contained in this document are an accurate statement of the duties, responsibilities and other requirements of the position.

Manager/Supervisor
Name: Sasha Connolly
Signature/HE: 51985
Date: 8 January 2022

Dept./Division Head
Name: Sue Bascombe
Signature/HE: 12407
Date: 12 January 2022

Position Occupant
Name:
Signature/HE:
Date: