



HSS Registered

Clinical Neuropsychologist - Registrar

Position Details

Position Number: 601384
Classification: Grade 1 (HSO Level P1.5 -1.6)
Agreement: HSUWA Health Salaried Officers Agreement
Directorate: North Metropolitan Health Service
Department: Neurosciences Unit
Location: Graylands Hospital, Mount Claremont

Reporting Relationships

This position reports to:

601766	Senior Clinical Neuropsychologist Coordinator	HSO Grade 3
--------	---	-------------

Positions under direct supervision:

Nil

Primary Purpose of the Role

The Neurosciences Unit is a statewide service that provides diagnostic support to hospitals and other government and non-government agencies. Within a multidisciplinary and professional team context this position performs clinical, consultant, educational and research neuropsychological services for adults and older adults with neurological and/or psychiatric conditions, under the approved professional supervision of a Clinical Neuropsychologist.



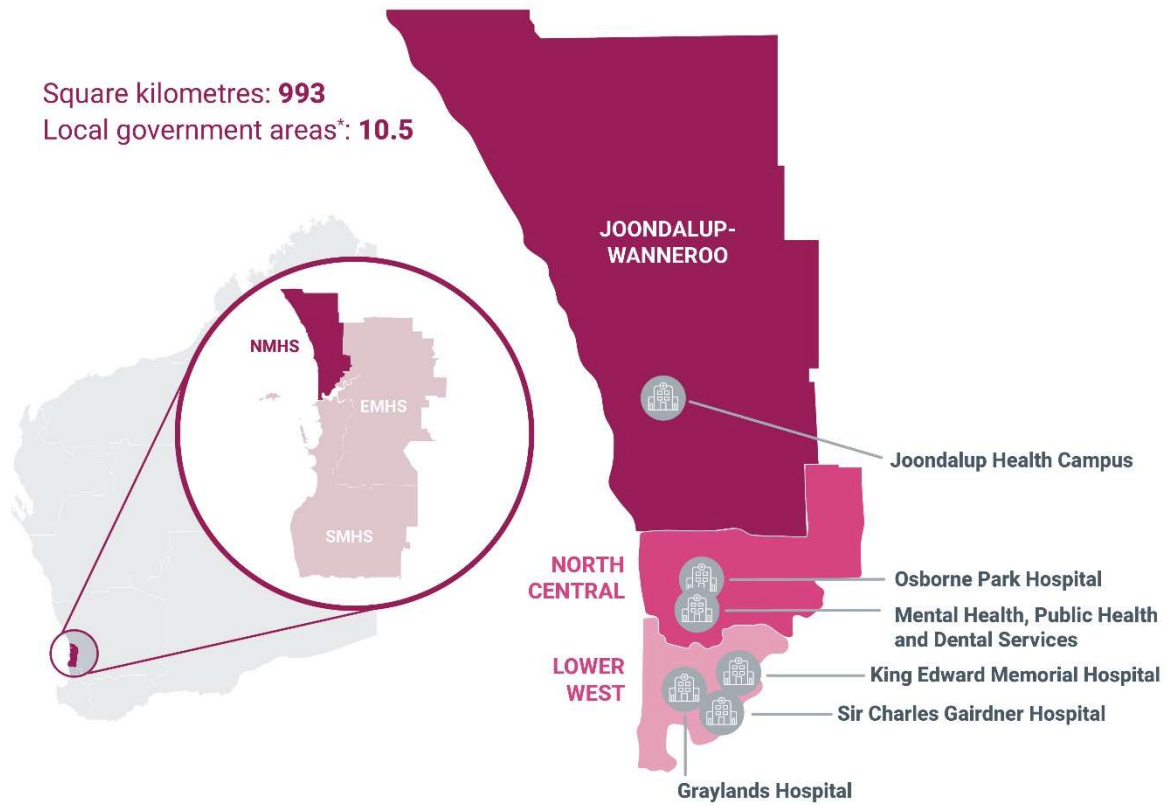
Vision

A trusted partner, delivering excellent health care for our people and our communities.



Mission

To promote and improve the health of our people and our communities.



North Metropolitan Health Service

Since our establishment in 2016, NMHS has embraced best practice to deliver improved clinical outcomes in the face of rising challenges for all healthcare providers. With a budget of \$2.16 billion and 8,917 full-time equivalent (FTE) staff, we serve a population of 736,907 people (about 28% of Western Australia's total population) within a catchment area of almost 1,000 square kilometres. The population we serve is projected to increase by 17% between 2021 and 2031, and the number aged 65 years and older will increase by 41% over the same period. NMHS provides a comprehensive range of adult specialist medical, surgical, mental health and obstetric services in WA, delivered across three tertiary hospitals and two secondary hospitals, all fully accredited. NMHS oversees the provision of contracted public health care from Joondalup Health Campus operated under a public-private partnership. A range of statewide, highly specialised multidisciplinary services is offered from several NMHS hospital and clinic sites.



Our values



Care

We show empathy, kindness and compassion to all.



Respect

We are inclusive of others and treat everyone with courtesy and dignity.



Innovation

We strive for excellence and are courageous when exploring possibilities for our future.



Teamwork

We work together as one team in a spirit of trust and cooperation.



Integrity

We are honest and accountable and deliver as promised.

Please refer to [NMHS Values – Organisational/Individual Behaviours](#) for information on individual behaviours that reflect the organisation's values.

Our strategic priorities

We are focussing on six strategic priorities for the 2020-2025 period:



Enabling healthy communities

We build healthy and engaged communities



People-centred care

We will place our consumers' and their carers' best interests and experience at the core of all we do



Integration and connection

We will build strong connections and partnerships



Innovation and adaptive models of care

We will use research and technology to improve outcomes



Trusted, engaged and capable people

We will invest in our people and our culture



Sustainable and reliable

We will reduce harm, waste and unwarranted variation



Key Accountabilities

1. Clinical Services (75%)

- 1.1 Performs neuropsychological assessments to appraise cognitive, emotional, behavioural and family functioning utilising interviews, systemic observations, psychometric and psychodiagnostic assessments and evaluation of systems for adult patients with complex neurological and mental health/psychological disorders including neurodegenerative conditions.
- 1.2 Provides neuropsychological feedback, recommendations and interventions to clients and significant others as appropriate.
- 1.3 Participates in multidisciplinary team meetings in which clinical management and intervention planning decisions are made.
- 1.4 Develops and extends own professional knowledge.

2. Consultation, Education, Supervision, and Research (15%)

- 2.1 Undertakes regular supervision towards endorsement in clinical neuropsychology with the Psychologists Board of Australia in consultation with the Senior Clinical Neuropsychologist Coordinator.
- 2.2 Provides consultation regarding clinical neuropsychology matters to colleagues.
- 2.3 Liaises with referrers and other external agencies regarding feedback, recommendations, clinical issues, and case management of clients.
- 2.4 Provides education and training on neuropsychological matters within discipline and across disciplines.
- 2.5 Participates in public preventative and health education programs in areas of expertise as required.
- 2.6 Participates in research of an applied clinical and evaluative nature.

3. General Administration (10%)

- 3.1 Maintains client records and statistical data in accordance with established procedures and Directorate requirements.
- 3.2 Participates in intake, psychology, department and other meetings as required.
- 3.3 Provides feedback and reports on training and educational activities.
- 3.4 Complies with guidelines regarding the use, maintenance, and selection of psychological therapy and testing materials and other government property.

4. NMHS Values: *Care, Respect, Innovation, Teamwork, Integrity*

- 4.1 Reflect the NMHS values in the way you work, behave and make decisions.

5. NMHS Governance, Safety and Quality Requirements

- 5.1 Participates in the maintenance of a safe work environment.
- 5.2 Participates in an annual performance development review.
- 5.3 Supports the delivery of safe patient care and the consumers' experience including participation in continuous quality improvement activities in accordance with the requirements of the National Safety and Quality Health Service Standards and other recognised health standards.
- 5.4 Completes mandatory training (including safety and quality training) as relevant to role.



- 5.5 Performs duties in accordance with Government, WA Health, North Metropolitan Health Service and Departmental / Program specific policies and procedures.
- 5.6 Abides by the WA Health Code of Conduct, Occupational Safety and Health legislation, the Disability Services Act and the Equal Opportunity Act.

6. Undertakes other duties as directed.

Work Related Requirements

The following criteria should be considered in the context of the NMHS Vision, Mission and Values.

Essential Selection Criteria

1. Masters or Doctoral degree in Clinical Neuropsychology and eligibility for full registration and Clinical Neuropsychologist Registrar status with the Psychology Board of Australia.
2. Demonstrated capacity to work independently under approved professional supervision of a board approved Clinical Neuropsychologist in a variety of roles such as clinician, consultant, educator, researcher/evaluator, and agent of change in a multidisciplinary team environment.
3. Demonstrated proficiency in neuropsychological assessment, feedback, interview techniques and report writing for adults (over the age of 16 years) with mental health and/or neurological conditions including neurodegenerative disorders.
4. Knowledge of research, evidence-based theory and clinical practice applicable to adult neuropsychology. This includes a well-developed model of evidence-based practice.
5. Well-developed communication and interpersonal skills including the ability to liaise effectively with other health professionals and external agencies both on individual patient management matters and on general service issues.
6. A sound knowledge of the laws and ethical standards governing psychological practice.

Desirable Selection Criteria

- 1 Experience in the delivery of community, clinic and outpatient services within a mental health setting.
- 2 Current knowledge and commitment to Equal Opportunity in all aspects of employment and service delivery.

Appointment Prerequisites

Appointment is subject to:

- Evidence of current full registration by the Psychology Board of Australia and evidence of enrolment in the Clinical Neuropsychology Registrar program must be provided prior to commencement.
- Working with Children (WWC) Check, compulsory check for people who carry out child-related work in Western Australia.
- Provision of the minimum identity proofing requirements.
- Successful Criminal Record Screening Clearance.
- Successful Pre-Employment Integrity Check.
- Successful Pre-Employment Health Assessment.

Certification

The details contained in this document are an accurate statement of the duties, responsibilities and other requirements of the position.



Manager/Supervisor

Name: Chloe Marshall-Cary
Signature/HE: 103751
Date:

Dept./Division Head

Name: Brian Long
Signature:
Date:

Position Occupant

Name:
Signature:
Date:

