



Job Description Form



Community | Compassion | Quality



Integrity | Equity | Curiosity

Position Title

Position number:

Clinical Nurse Specialist-Oncology

616380

An area of rugged beauty, the Pilbara has a vast coastal plain, spectacular inland ranges and an arid desert region reaching into the centre of Australia. It is bordered by the Indian Ocean to the west and extending across the Great Sandy Desert to the Northern Territory border in the east. The Pilbara region covers an area of 507,896 km² (193,826 mi²) (including offshore islands), roughly the combined land area of the US states of California and Indiana, within this large land mass exists a diverse Aboriginal culture, with 31 different language groups. Mining and offshore oil and gas exploration have given rise to the Pilbara's economic boom in recent years, drawing large numbers of people to the region on both a temporary and permanent basis. The region offers an abundance of rugged gorges, secluded waterfalls and isolated rivers and waterholes within its three national parks; Millstream-Chichester, Karlamilyi and Karijini. In addition to its magnificent inland attractions, the Pilbara's coastal plain is home to National Heritage listed Dampier Archipelago and the Montebello and Mackerel islands.

About the WA Country Health Service

Our Strategic Priorities



Our Vision

To be a global leader in rural and remote healthcare.

Our Values

Community

We live and work in country communities. We are invested in the health, wellness and viability of country communities and the vibrancy, diversity and future of country WA.

Compassion

We are inclusive, respectful, and considerate. We care deeply about the people in our care and country communities.

Quality

We provide safe, high-quality care, constantly striving to innovate, improve and achieve trust in our care.

Integrity

We bring honesty, collaboration and professionalism to everything that we do.

Equity

We are passionate about fairness in healthcare for all Western Australians, especially the most vulnerable and disadvantaged people and communities.

Curiosity

We continually enquire and seek to understand, using the best evidence, insight and research to improve care.

Our Mission

To deliver and advance high quality care for country WA communities.

Position Title: Clinical Nurse Specialist Oncology	Position Number: 616380	Classification: SRN2
--	-------------------------	----------------------

Directorate overview

WACHS Cancer Services is comprised of a diverse workforce who support the planning, delivery and evaluation of cancer services across country WA. The workforce is a combination of WACHS-wide and regional specific roles. The vision for WACHS cancer services is "Partnerships and Innovation for Excellence in Country Cancer Care". WACHS are committed to partnering with communities and cancer service providers, utilising innovative technology and a skilled workforce to bring excellent cancer services close to home for country people. Our Directorate actively supports and encourages diversity and inclusion across all occupational groups through the development and implementation of initiatives aimed at accessing and improving employment and mentoring opportunities for all people.

Position Details

Position Number:	616380	Registration Date:	July 2021
Classification:	SRN Level 2	Location:	Karratha
Accommodation:	As determined by WA Country Health Service Policy		
Award / Agreement:	Nurses and Midwives Agreement		
Organisational Context:	Nursing & Midwifery-Cancer Services		

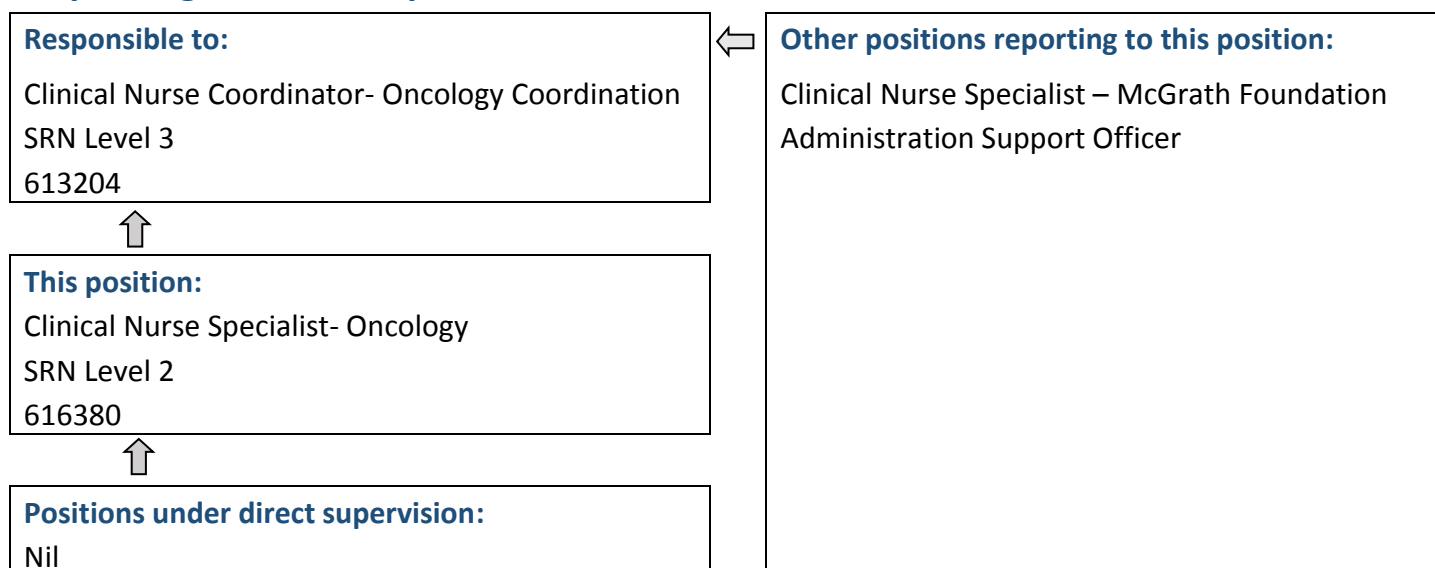
Position Overview

The role of the Clinical Nurse Specialist- Oncology is to work in partnership across all health areas to improve the quality and continuity of care and support provided to Aboriginal clients diagnosed with cancer, their families and communities across the continuum of care.

Key responsibilities include:

- Acts as a cancer resource person for staff and Aboriginal patients and their significant others throughout the region
- Supports Aboriginal people to access cancer care and complete treatment
- Provides clinical cancer nursing knowledge and case management across the organisation
- Increase capability of Aboriginal Health Workers and Liaison Officers to provide cancer care on country
- Demonstrates leadership and role modelling
- Promotes best practice and maintenance of clinical standards
- Facilitates change management to improve Aboriginal cancer patient's outcomes.

Reporting Relationships



--	--

Key Duties/Responsibilities

1. APPLICATION OF ADVANCED CANCER KNOWLEDGE AND SKILLS APPLICATION OF ADVANCED PROSTATE CANCER KNOWLEDGE AND SKILLS

- 1.1 Integrates the role of Clinical Nurse Specialist-Oncology into current patient care pathways.
- 1.2 Provides advanced and complex patient care within cancer care protocols.
- 1.3 Initiates and analyses research to determine clinical best practice; initiates, implements and evaluates best practice activities that support the delivery of appropriate clinical cancer care for Aboriginal patients within the region.
- 1.4 Develops innovative techniques for complex problem solving for cancer services within the region.
- 1.5 Develops, implements and promotes evidence based standards and policies that are compliant with relevant professional, industrial and legislative requirements for the region.
- 1.6 Provides leadership in the coordination and implementation of quality improvement activities.
- 1.7 Use effective change management strategies to improve practice within the region.

2. PROMOTION OF MULTIDISCIPLINARY CARE

- 2.1 Leads and manages Aboriginal cancer care nursing services in collaboration with the Cancer Nurse Coordinator.
- 2.2 Establishes a working relationship and works collaboratively with multidisciplinary treatment team members on the regional and metropolitan areas.
- 2.3 Promotes the service within the region.
- 2.4 Maintains excellence in interpersonal skills and use of leadership to guide appropriate patient care and service delivery. Maintaining strong communication with network of Cancer Nurse Coordinators.
- 2.5 Promotes and facilitates a multidisciplinary team approach to decision making.

3. FACILITATION AND CLIENT FOCUSED SUPPORT AND TREATMENT

- 3.1 Provide case management, information and support to Aboriginal cancer patients and their families and significant others. Free text.

4. COMMITMENT TO MAINTENANCE OF PROFESSIONAL STANDARDS Other

- 4.1 Maintain a high standard of professionalism and participates in self-development.

5. ACT AN ONCOLOGY RESOURCE

- 5.1 Provides clinical leadership to medical, nursing, and allied health professionals in Aboriginal cancer care within the region.
- 5.2 Develops, implements and evaluates education and training programs related to the area of Aboriginal cancer care.
- 5.3 Provide clinical information, statistics and reports as required by the Regional Nurse Director.
- 5.4 Acts as a resource for local health professionals, providing information and guidance when required.
- 5.5 Assists with the development of business cases and strategies to facilitate effective continued service provision.
- 5.6 Contributes to the formulation of staffing profiles, according to analysis of clinical cancer needs.
- 5.7 Operates within the allocated/ available budget for cancer services.

6. OTHER

- 6.1 Other duties related to the provision of Aboriginal cancer care as directed by the line manager of this position.
- 6.2 Undertake other duties as directed



Work Related Requirements

The following criteria are to be read together with the Brief Summary of Duties and considered in the context of the WACHS Values.

Essential

1. Eligible for registration in the category of Registered Nurse by the Nursing and Midwifery Board of Australia.
2. Pursuant to section 50D of the Equal Opportunities Act, the occupant of this position must be of Aboriginal descent
3. Demonstrated experience in working effectively and harmoniously within a multidisciplinary health care team and independently.
4. Demonstrated leadership experience and clinical/professional knowledge in the provision of cancer nursing care.
5. Demonstrated high level interpersonal and communication (written & verbal) skills.
6. Demonstrated well-developed analytical and problem solving skills.
7. Demonstrated high level of organisational and time management skills.
8. Extensive knowledge and application of quality improvement, research and best practice principles.
9. Possession of a current WAC or C-A Class drivers licence or equivalent.

Desirable

1. Possession of or significant progression toward the attainment of a post graduate qualification in area of speciality.
2. Understanding of preceptoring, orientation, clinical teaching programs and basic counselling skills.
3. Current knowledge and commitment to Equal Opportunity, Disability Services and Occupational Safety and Health in all aspects of employment and service delivery.

Appointment Pre-requisites

Appointment is subject to:

- Evidence of current registration by the Nursing and Midwifery Board of Australia must be provided prior to commencement.
- Pursuant to section 50D of the Equal Opportunities Act, the occupant of this position must be of Aboriginal descent
- Provision of the minimum identity proofing requirements
- Successful Criminal Record Screening Clearance
- Successful Pre-Employment Health Assessment
- Successful WA Health Integrity Check
- Successful Working With Children Check
- Evidence of a current C or C-A Class driver's licence or other specialised licence class and ability to travel within the region as required including overnight stays

WA Country Health Service –
Central Office

21 July 2021
REGISTERED

