



HSS REGISTERED

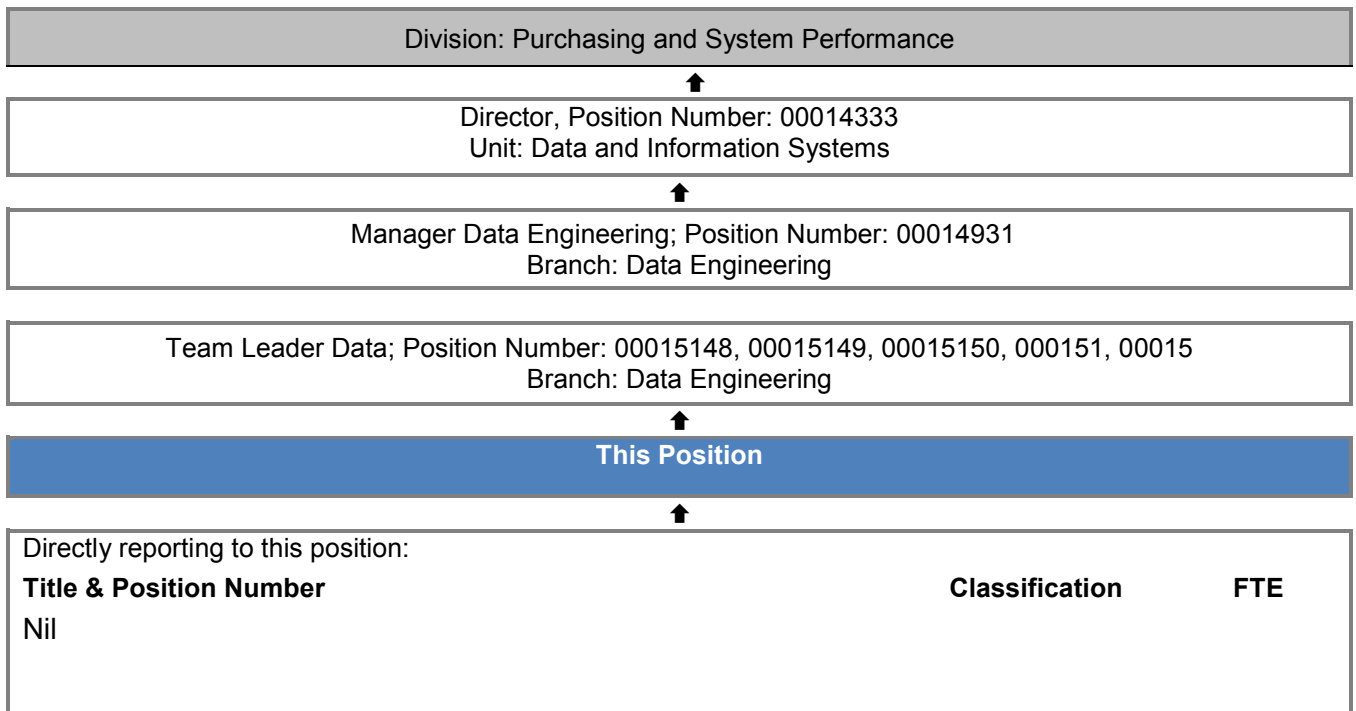
POSITION DESCRIPTION

| | |
|------------------------|--------------------------------------------------------------|
| Position Number | 00015245, 00015246, 00015247, 00015248, 00015249 |
| Position Title | Senior Data Engineer |
| Classification | PSO Level 6 |
| Division | Purchasing and System Performance |
| Directorate | Information and System Performance |
| Unit | Data and Information Systems |
| Position Status | Permanent |
| Award | Public Service and Government Officers CSA General Agreement |
| Site Location | East Perth |

ORGANISATIONAL ENVIRONMENT

| | |
|--------------------|-------------------------------------------------------------------------------------------------------------------------------------------|
| Our Vision | A WA health system that delivers safe, high quality and sustainable services that support and improve the health of all West Australians. |
| Our Mission | To lead and steward the WA health system. |
| Our Values | Respect, Excellence, Integrity, Teamwork, Leadership |

REPORTING RELATIONSHIPS



KEY RESPONSIBILITIES

The Senior Data Engineer will implement and support an analytical data infrastructure across the data lifecycle including data inputs, data quality, data transformation, data outputs, data architecture and data linkage.

They will be responsible for the scoping, estimating, planning and execution of data engineering projects and will provide information to stakeholders about data structures, transformations and data quality.

BRIEF SUMMARY OF DUTIES

This section outlines the results and outcomes required of an individual in this position.

Employees are required to undertake all duties and responsibilities in accordance with Department of Health WA Code of Conduct, Policies/Procedures and relevant legislation.

Role-Specific Responsibilities

Develops, supports and maintains an analytical data infrastructure across the data lifecycle including data collection, transformation, quality, linkage and outputs.

Undertakes the scoping, estimating, planning and execution of data engineering projects.

Designs and implements computer code based data solutions according to business definitions, technical specifications, data dictionary, and data mapping requirements.

Explores, learns and advocates latest languages and technologies to provide new capabilities and increase efficiency to advance ongoing reporting and analysis processes, including automating or simplifying self-service capability and support for customers.

Undertakes data testing and quality assurance activities to maintain data integrity, by being able to identify and explain complex data quality issues via the design and implementation of automated testing functionality.

Creates and maintains relevant documentation, including systems architecture, user guidelines and standard operating procedures.

Ensures compliance with data governance and data security

Builds processes supporting data transformation, data structures, metadata, dependency and workload management.

Strategic Analysis, Management and Reporting

Ensures data collected and information provided to clients is robust, accurate and available in a timely manner.

Undertakes support work on data repositories, data management and extraction techniques, develops innovative information dissemination/reporting solutions that utilise a range of emergent technologies and enable predictive, evidence-based decision making at all levels of the organisation.

Leadership

Provides data engineering support, training and advice to ISPD staff and other project teams to ensure achievement of key deliverables.

Champions efforts for continuous improvement to data analysis strategies.

Liaison, Representation and Stakeholder Development

Builds and maintains positive working relationships with key internal and external stakeholders in order to maintain business knowledge, understand prioritisations and effectively liaise, consult, negotiate and collaborate to achieve these.

Contributes to effective consultation processes with stakeholders across the WA health system to ensure Department of Health data collections meet System Manager requirements and reform initiatives.

Interfaces with other technology teams to extract, transform, and load data from a wide variety of data sources using a wide array of languages and big data technologies

Interacts with IT and business users to understand requirements and produce solutions that deliver value to the business.

Participates in and/or supports working parties and project teams involved with associated projects.

Corporate Responsibilities

Supports an environment of customer focus, excellence in delivery, high performance, and accountability within a team environment that values and recognises the contribution of all members.

Complies with corporate policies and procedures and models expected behaviours aligned with both departmental and broader public sector Codes of Conduct and legislative requirements.

Undertakes other duties as required.

WORK RELATED REQUIREMENTS

Applicants should demonstrate their capacity to meet the following criteria which should be read in conjunction with the specific responsibilities of this role.

| Essential Selection Criteria |
|----------------------------------------------------------------------------------------------------------------------------------------------------------------------------------------------------------------------------------------------------------------------------------------------------------------------------------------------------------------------------------------------------------------------------------------------------------------------------------------------------------------------------------------------------------------------------------------------------------------------------------------------------------------------------------------------------------------------------------------------------------------------------|
| <ol style="list-style-type: none"> 1. Demonstrated significant and current experience in the contemporary management of data across at least one area of the full life cycle of storage, quality, transformation, integration, outputs and data architecture, within a large organisation. 2. Ability to work in a team, provide guidance to staff and promote an effective collaborative working environment. 3. Well developed interpersonal, communication and negotiation skills to influence people and to establish and maintain positive working relationships to achieve outcomes. 4. Demonstrated conceptual, analytical and problem solving ability within a complex and evolving technology and business environment. |

| Desirable Selection Criteria |
|-------------------------------------------------------------------------------------------------------------------------------------------------------------------------------------------------------------------------------------------------------------------------------------|
| <ul style="list-style-type: none"> • Possession of Tertiary qualification in a relevant discipline • Demonstrated experience with a least two of the following SQL, python, SAS, machine learning experience, cloud data environments such as azure or aws. |

| Appointment Factors | <ul style="list-style-type: none"> – Successful 100 point Identification Check. – Successful Criminal Record Screening Clearance. – Successful Pre-Employment Integrity check. |
|---------------------|-----------------------------------------------------------------------------------------------------------------------------------------------------------------------------------------------------------------|
|---------------------|-----------------------------------------------------------------------------------------------------------------------------------------------------------------------------------------------------------------|

CERTIFICATION

The details contained in this document are an accurate statement of the duties, responsibilities and other requirements of the position.

| Manager/Supervisor | Director/Division Head |
|--------------------|------------------------|
| NAME: | NAME: |
| SIGNATURE: | SIGNATURE: |
| DATE: | DATE: |