

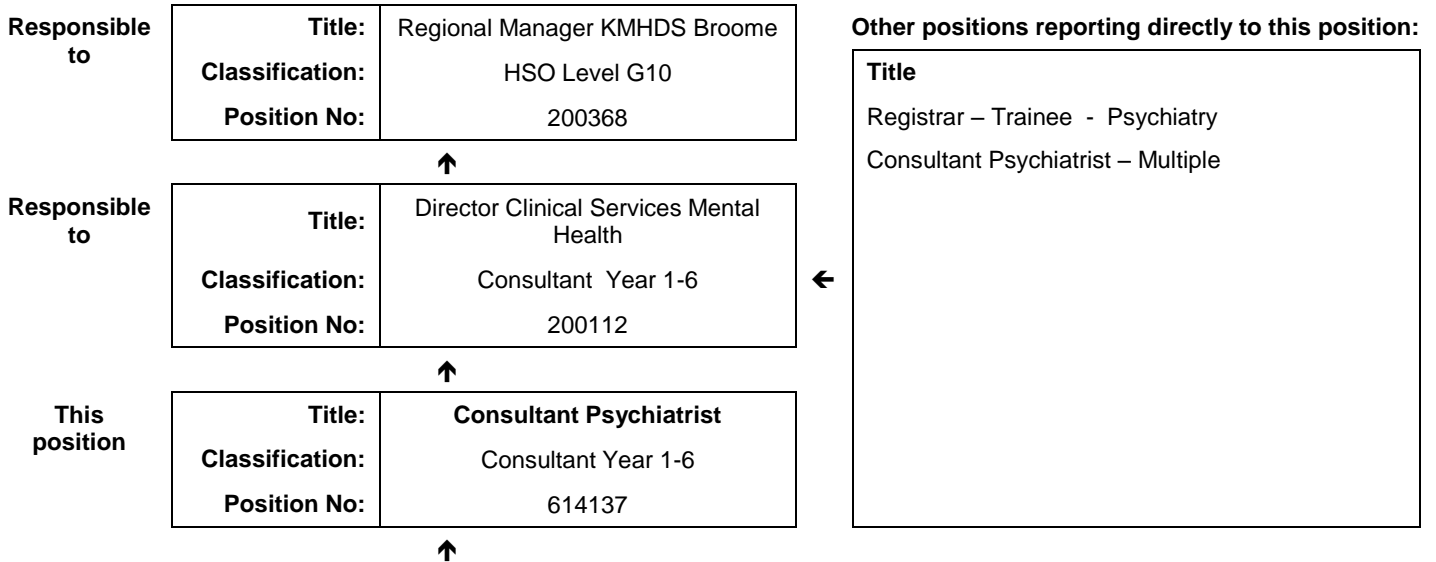


## JOB DESCRIPTION FORM

### Section 1 - POSITION IDENTIFICATION

		<b>Position No:</b>	<b>614137</b>
<b>Division:</b>	Kimberley	<b>Title:</b>	<b>Consultant Psychiatrist</b>
<b>Branch:</b>	Kimberley Mental Health and Drug Service (KMHS)	<b>Classification:</b>	Consultant Year 1-6
<b>Section:</b>	Broome Mental Health Unit (BMHU)	<b>Award/Agreement:</b>	Medical Practitioners Agreement

### Section 2 - POSITION RELATIONSHIPS



<b>Positions under direct supervision:</b>	<b>← Other positions under control:</b>								
<table border="1" style="width: 100%;"> <tr> <th style="width: 50%;">Position No</th> <th style="width: 50%;">Title</th> </tr> <tr> <td> </td> <td> </td> </tr> </table>	Position No	Title			<table border="1" style="width: 100%;"> <tr> <th style="width: 70%;">Category</th> <th style="width: 30%;">Number</th> </tr> <tr> <td> </td> <td> </td> </tr> </table>	Category	Number		
Position No	Title								
Category	Number								

### Section 3 - KEY RESPONSIBILITIES

Responsible to the Clinical Director for the provision of specialist medical psychiatric services to the Broome Mental Health Unit (BMHU). Provide clinical leadership, assessment, treatment, liaison and consultation service for the BMHU. Assume clinical responsibility for BMHU staff practice and standards in patient management. Provide supervision, training and instruction to junior medical staff. Act as a member of the multidisciplinary and the management team for the BMHU. Adhere to the Western Australian Mental Health Act (2014) legislation.

TITLE	Consultant Psychiatrist	POSITION NO	614137
		CLASSIFICATION	Consultant Year 1-6



The WA Country Health Service (WACHS) is the largest country health system in Australia and one of the biggest in the world, providing health services to over half a million people, including over 50,000 Aboriginal people, over a vast two and a half million square kilometres area.

WA Country Health Service hospitals handle almost as many births as the State's major maternity hospital – and 40% of the State's emergency presentations. The range of health services provided include acute inpatient and emergency care, population and public health, mental health, Aboriginal health, aged care and includes increasing number of services provided by telehealth video-conferencing.

Our dedicated and committed staff work hard to fulfil our vision of Healthier country communities through partnerships and innovation, to deliver health services that support the health and well-being of individuals and communities in rural and remote Western Australia.

**OUR MISSION**

To deliver and advance high quality care for country WA communities

**OUR VISION**

To be a global leader in rural and remote healthcare

**OUR STRATEGIC PRIORITIES**

***Caring for our patients*** - Providing safe, patient-centred care, ensuring the needs of our patients are at the core of everything we do

***Addressing disadvantage and inequity*** - Delivering focussed and accessible services for those who need it most

***Building healthy, thriving communities*** - Supporting country people to be as healthy as they can be and continuing to play our part in the economic and social viability of country communities

***Delivering value and sustainability*** - Ensuring that the services we provide are sustainable and we are transparent about our performance

***Enabling our staff*** - Supporting our staff to deliver great care, empowering them to learn, grow, innovate and lead

***Leading innovation and technology*** - Embracing innovation and technology to create a safer, more connected and equitable health system

***Collaborating with our partners*** - Partnering to deliver more integrated services that improve patient outcomes and experience, giving consumers more choice and control

**OUR VALUES**

***Community*** – We live and work in country communities. We are invested in the health, wellness and viability of country communities and the vibrancy, diversity and future of country WA.

***Compassion*** – We are inclusive, respectful, and considerate. We care deeply about the people in our care and country communities.

***Quality*** – We provide safe, high-quality care, constantly striving to innovate, improve and achieve trust in our care.

***Integrity*** – We bring honesty, collaboration and professionalism to everything that we do.

***Equity*** – We are passionate about fairness in healthcare for all Western Australians, especially the most vulnerable and disadvantaged people and communities.

***Curiosity*** – We continually enquire and seek to understand, using the best evidence, insight and research to improve care.

**WA Country Health Service – KIMBERLEY**  
**05 February 2020**  
**REGISTERED**

<b>TITLE</b>	<b>Consultant Psychiatrist</b>	<b>POSITION NO</b>	<b>614137</b>
		<b>CLASSIFICATION</b>	Consultant Year 1-6

#### Section 4 - STATEMENT OF DUTIES

<b>Duty No</b>	<b>Details</b>	<b>Freq</b>	<b>%</b>
<b>1</b>	<b>CLINICAL</b>		<b>70</b>
1.1	In conjunction with the director assumes clinical responsibility primarily for clients of BMHU and also within the community.		
1.2	In conjunction with the director, evaluates the clinical practice and standards of all BMHU clinical staff in their management of clients.		
1.3	Interviews, examines diagnoses and treats clients, and interviews their relatives and carers as indicated to ensure best practice.		
1.4	Participates in multi-disciplinary team meetings and takes the lead role in the discussion of each client's management.		
1.5	Participates in the after-hours, weekends and public holiday on-call roster in association with the consultant community psychiatrist and clinical director.		
1.6	Develops and maintain formal links and networks with medical and other staff of the Broome Regional Health Campus, GP's, other inpatient psychiatric facilities in WA, northwest communities and agencies including the Pilbara region.		
1.7	Advises and assists in the triage of new referrals as required.		
1.8	Provides consultation and liaison services to hospitals in the region.		
<b>2</b>	<b>PROFESSIONAL</b>		<b>20</b>
2.1	Ensures adherence to the current Mental Health Act and Regulations on the part of staff within the BMHU.		
2.2	Provides supervision training and instruction to both the Psychiatric Registrar and Resident Medical Officer and Medical Students as required.		
2.3	Participate in professional development including professional supervision, performance management, further education and training and keeping up to date with new developments in Psychiatric practice.		
2.4	Participates in teaching of the staff of the BMHU.		
2.5	Participates in service strategic planning and research activities associated with Kimberley Mental Health Drug Service (KMHDS) and BMHU.		
<b>3</b>	<b>QUALITY</b>		<b>5</b>
3.1	Provide leadership and participates in clinical governance matters of the BMHU.		
3.2	Participates in quality management programs and accreditation processes.		
<b>4</b>	<b>OTHER</b>		<b>5</b>
4.1	Supports the philosophy of KMHDS and the BMHU.		
4.2	Other duties as directed by line manager or their delegate.		

The occupant of this position will be expected to comply with and demonstrate a positive commitment to the WACHS values and the highest achievement in demonstrating positive commitment to Equal Employment Opportunity, Occupational Safety & Health, Public Sector Standards, Code of Conduct, Code of Ethics, Quality Improvement, Performance Management, Customer Focus, Disability Services Act and Confidentiality throughout the course of their duties.

**WA Country Health Service – KIMBERLEY**

**05 February 2020**

**REGISTERED**

<b>TITLE</b>	<b>Consultant Psychiatrist</b>	<b>POSITION NO</b>	<b>614137</b>
		<b>CLASSIFICATION</b>	Consultant Year 1-6

### Section 5 - SELECTION CRITERIA

#### ESSENTIAL:

- 1 Evidence of registration by the Medical Board of Australia must be provided prior to commencement.
- 2 Fellowship of the RANZCP or equivalent.
- 3 Demonstrated commitment to ongoing continual professional development.
- 4 Extensive experience working as a Consultant Psychiatrist, with demonstrated clinical experience and skills with a broad range of therapeutic interventions, and well developed conceptual, analytical and evaluation skills, including the ability to provide innovative solutions to complex and sensitive problems.
- 5 Experience and ability to work effectively in a multidisciplinary team.
- 6 Demonstrated effective written, verbal and interpersonal communication skills.
- 7 Current C Class drivers Licence.

#### DESIRABLE:

- 1 Experience providing mental health care to Aboriginal people and working in a rural or remote environment.
- 2 Current knowledge and obligations of relevant legislative, policy and practice in mental health including National Standards for Mental Health Services, the Western Australia Mental Health Act (2014), Equal Opportunity, Disability Services and Occupational Safety and Health, and how these affect employment and service delivery.
- 3 Administrative skills and Experience and/or interest in teaching, research and supervision.

### Section 6 - APPOINTMENT FACTORS

<b>Location</b>	Broome	<b>Accommodation</b>	As per WACHS Kimberley policy
<b>Appointment/ Allowances Conditions</b>	Where applicable - District Allowance, Annual Leave Travel Concession, one week additional Annual leave for above the 26 <sup>th</sup> parallel, air conditioning subsidy. Appointment is subject to: <ul style="list-style-type: none"> <li>• Evidence of registration by the Medical Board of Australia must be provided prior to commencement</li> <li>• Provision of the minimum identity proofing requirements</li> <li>• Successful Criminal Record Screening clearance</li> <li>• Successful Pre-Employment Health Assessment</li> <li>• Successful WA Health Integrity Check</li> <li>• Successful Working With Children Check</li> <li>• Evidence of a current C or C-A Class drivers licence</li> </ul>		
<b>Specialised equipment operated</b>			

### Section 7 - CERTIFICATION

The details contained in this document are an accurate statement of the duties, responsibilities and other requirements of the position.

Signature and Date: \_\_\_\_/\_\_\_\_/\_\_\_\_

**Manager**  
Kimberley Mental Health and Drug Service

Signature and Date: \_\_\_\_/\_\_\_\_/\_\_\_\_

**Regional Director**  
WACHS Kimberley

As occupant of the position I have noted the statement of duties, responsibilities and other requirements as detailed in this document.

Name	Signature	Date Appointed	Date Signed

