



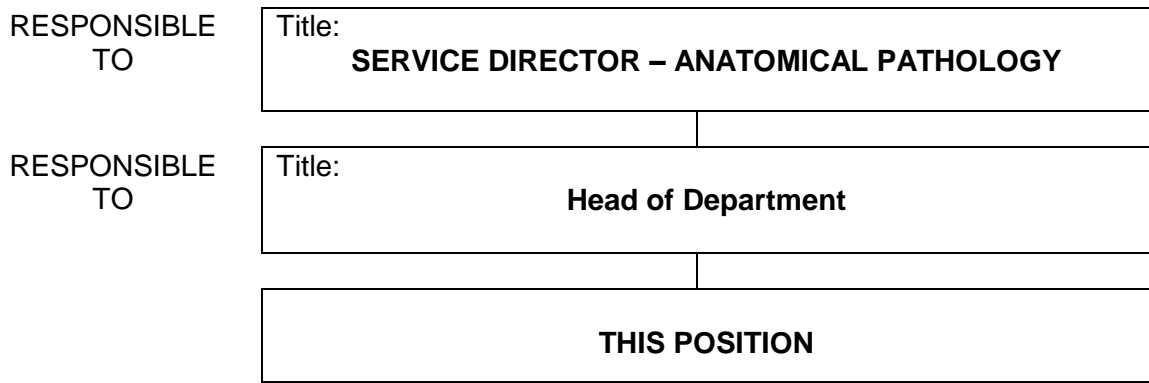
<CLEARANCE REG NO. PWWF1446 – JD – 21 JUN 2021>

**SECTION 1 - POSITION IDENTIFICATION**

<b>NETWORK</b>	<b>QEII/FSH</b>
<b>SITE</b>	<b>QEII/FSH</b>
<b>DEPARTMENT</b>	<b>Anatomical Pathology</b>
<b>SECTION</b>	<b>Anatomical Pathology</b>

<b>POSITION TITLE</b>	Consultant – Pathologist - Anatomical Pathology
<b>CLASSIFICATION</b>	Consultant Year 1-9
<b>POSITION NO.</b>	00016387
<b>AWARD</b>	Medical Practitioners Agreement

**SECTION 2 - POSITION RELATIONSHIPS**



Positions under direct Supervision:

<u>Position No.</u>	<u>Title</u>	<u>Classification</u>	<u>FTE</u>

**SECTION 3 - KEY RESPONSIBILITIES**

State BRIEFLY the key responsibilities or prime function of the position. Refer to definitions of terms to ensure the correct meaning of verbs frequently used eg. Controls, Maintains, etc.

Provides a diagnostic Laboratory Anatomical Pathology service.

# JOB DESCRIPTION FORM

PAGE 2 OF 3

## CONSULTANT – PATHOLOGIST – ANATOMICAL PATHOLOGY CONSULTANT YEAR 1-9, POSITION NO. 00016387

### SECTION 4 – BRIEF STATEMENT OF DUTIES

Duty No.	Details
1.	<p><b>SERVICE</b></p> <p>1.1 Provides a diagnostic service in all aspects of of anatomical pathology including cytopathology.</p> <p>1.2 Provides consultancy and advice to internal and external clients.</p> <p>1.3 Supervises junior medical staff including assessment of staff performance in relation to clinical competence, adherence to departmental protocols, timely and accurate documentation, communication with patients, relatives, peers, other staff and doctors in other hospitals and in the community.</p> <p>1.4 Participates in professional continuing educational activities, regular performance review and maintains and updates own knowledge and skills.</p> <p>1.5 Participates in departmental and other meetings as required to meet organisational and service objectives.</p> <p>1.6 Provides medical reports and performs other management tasks as required.</p> <p>1.7 Actively participates in quality improvement activities within the department and organisation.</p> <p>1.8 Continually reviews and develops services to ensure PathWest Laboratory Medicine WA is recognised as a leader in its field.</p>
2.	<p><b>TEACHING AND RESEARCH</b></p> <p>2.1 Participates in continuing educational activities of the department and organisation.</p> <p>2.2 Participates in Teaching Programmes for undergraduate and postgraduate students.</p> <p>2.3 Supervises, guides and teaches nursing, allied health and other support staff as appropriate.</p> <p>2.4 Participates in departmental academic activities.</p> <p>2.5 Participates in research and actively promotes research activities.</p>
3.	<p><b>OTHER</b></p> <p>3.1 Performs duties in accordance with organisational Policies and Procedures.</p> <p>3.2 Performs duties in accordance with relevant Occupational Health and Safety and Equal Opportunity Legislation.</p> <p>3.3 Conducts duties in a manner that is ethical and promotes a positive image of PathWest Laboratory Medicine WA.</p> <p>3.4 Participates in Performance Planning and Review.</p> <p>3.5 Performs other duties as directed.</p>

# JOB DESCRIPTION FORM

PAGE 3 OF 3

## CONSULTANT – PATHOLOGIST – ANATOMICAL PATHOLOGY CONSULTANT YEAR 1-9, POSITION NO. 00016387

### SECTION 5 - SELECTION CRITERIA

#### ESSENTIAL MINIMUM REQUIREMENTS

1. Eligible for registration by the Medical Board of Australia.
2. Fellowship of the Royal College of Pathologists of Australasia (FRCPA) or equivalent.
3. Demonstrated training and experience in histopathology and other aspects of anatomical pathology.
4. Demonstrated high level of written and verbal communication skills, and interpersonal skills.
5. Demonstrated ability to participate and provide leadership in a multi-disciplinary team.
6. Demonstrated experience in teaching and research.
7. Active participation and experience in continuing medical education.
8. Current knowledge of legislative obligations for Equal Opportunity, Disability Services and Occupational Safety and Health, and how these impact on employment and service delivery.

#### DESIRABLE REQUIREMENTS

1. Ability to initiate, undertake and supervise clinical research in pathology.

### SECTION 6 – APPOINTMENT FACTORS

1. Evidence of registration by the Medical Board of Australia must be provided prior to commencement.
2. After hours and weekend work as required.

<b>LOCATION</b> QEII/FSH	<b>ACCOMMODATION</b>
<b>ALLOWANCES/SPECIAL CONDITIONS/PRE-EMPLOYMENT REQUIREMENTS:</b>	
<ul style="list-style-type: none"><li>- <b>Successful criminal record clearance</b> as per Department of Health's Criminal Record Screening Policy.</li><li>- <b>Completion of identification check required.</b></li><li>- <b>Successful Pre-Employment Health Assessment required.</b></li><li>- <b>Successful Pre-Employment Integrity checks required.</b></li></ul>	
<b>SPECIALISED EQUIPMENT OPERATED</b>	

### CERTIFICATION

The details contained in this document are an accurate statement of the duties, responsibilities and other requirements of the position.

**SERVICE DIRECTOR**

**CHIEF PATHOLOGIST**

**SIGNATURE**

**SIGNATURE**

**DATE**

**DATE**

As occupant of the position I have noted the statement of duties, responsibilities and other requirements as detailed in this document.

NAME	SIGNATURE	DATE APPOINTED TO POSITION	DATE