

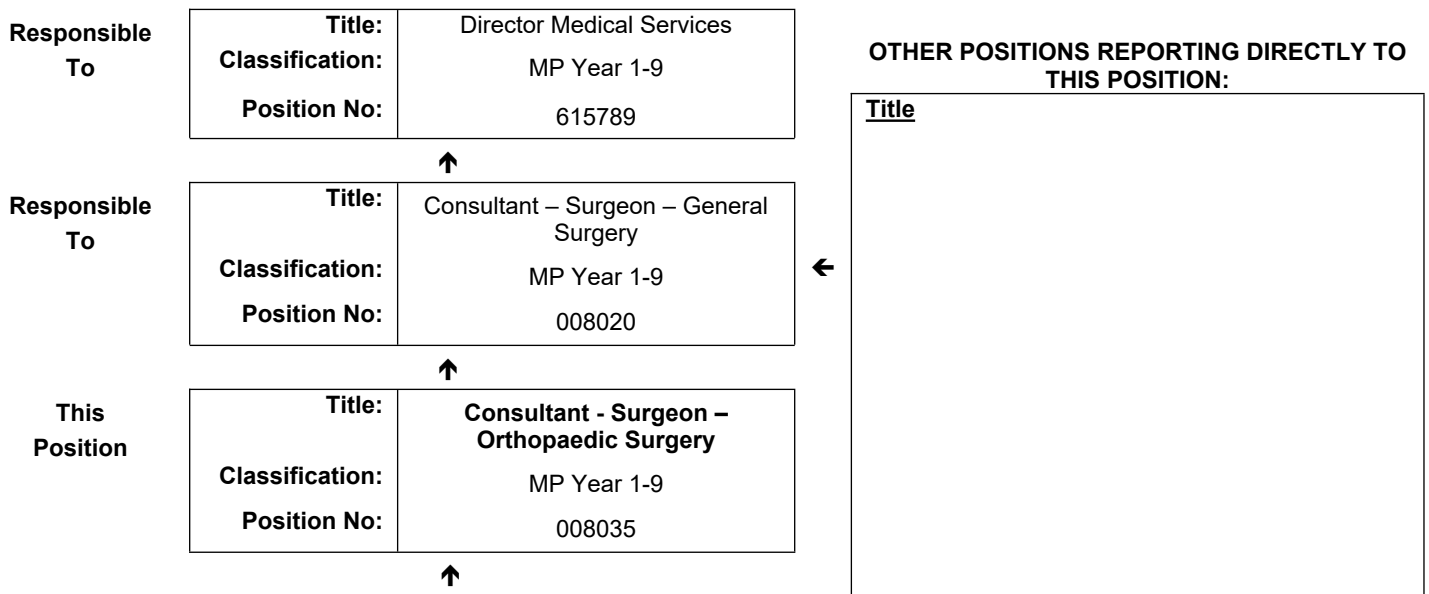


## JOB DESCRIPTION FORM

### Section 1 – POSITION IDENTIFICATION

<b>GREAT SOUTHERN</b>		<b>Position No:</b>	008035
<b>Division:</b>	Albany Health Campus	<b>Title:</b>	<b>Consultant - Surgeon – Orthopaedic Surgery</b>
<b>Branch:</b>	Medical Services	<b>Classification:</b>	MP Year 1-9
<b>Section:</b>		<b>Award/Agreement</b>	Medical Practitioners Agreement

### Section 2 – POSITION RELATIONSHIPS



<b>Positions under direct supervision:</b>	<b>← Other positions under control:</b>								
<table style="width: 100%; border-collapse: collapse;"> <thead> <tr> <th style="width: 30%;">Position No.</th> <th style="width: 70%;">Title</th> </tr> </thead> <tbody> <tr> <td style="text-align: center;">Junior doctors as allocated</td> <td></td> </tr> </tbody> </table>	Position No.	Title	Junior doctors as allocated		<table style="width: 100%; border-collapse: collapse;"> <thead> <tr> <th style="width: 70%;">Category</th> <th style="width: 30%;">Number</th> </tr> </thead> <tbody> <tr> <td> </td> <td> </td> </tr> </tbody> </table>	Category	Number		
Position No.	Title								
Junior doctors as allocated									
Category	Number								

### Section 3 – KEY RESPONSIBILITIES

Perform clinical duties and provide patient care as an orthopaedic surgeon within their defined scope of practice including onsite consultation, emergency services, outpatient clinics and operations and procedures; provide clinical oversight, support and advice to medical practitioners in the region regarding orthopaedic patients; participates in programs to ensure safety and quality of orthopaedic services including audit, incident review and clinical practice improvement projects.



TITLE	Consultant - Surgeon – Orthopaedic Surgery	POSITION NO	008035
		CLASSIFICATION	Year 1-9



The WA Country Health Service (WACHS) is the largest country health system in Australia and one of the biggest in the world, providing health services to over half a million people, including over 50,000 Aboriginal people, over a vast two and a half million square kilometres area.

WA Country Health Service hospitals handle almost as many births as the State’s major maternity hospital – and 40% of the State’s emergency presentations. The range of health services provided include acute inpatient and emergency care, population and public health, mental health, Aboriginal health, aged care and includes increasing number of services provided by telehealth video-conferencing.

Our dedicated and committed staff work hard to fulfil our vision of Healthier country communities through partnerships and innovation, to deliver health services that support the health and well-being of individuals and communities in rural and remote Western Australia.

**OUR MISSION**

To deliver and advance high quality care for couni

**OUR VISION**

To be a global leader in rural and remote healthca

**OUR STRATEGIC PRIORITIES**

***Caring for our patients*** - Providing safe, patient-centred care, ensuring the needs of our patients are at the core of everything we do

***Addressing disadvantage and inequity*** - Delivering focussed and accessible services for those who need it most

***Building healthy, thriving communities*** - Supporting country people to be as healthy as they can be and continuing to play our part in the economic and social viability of country communities

***Delivering value and sustainability*** - Ensuring that the services we provide are sustainable and we are transparent about our performance

***Enabling our staff*** - Supporting our staff to deliver great care, empowering them to learn, grow, innovate and lead

***Leading innovation and technology*** - Embracing innovation and technology to create a safer, more connected and equitable health system

***Collaborating with our partners*** - Partnering to deliver more integrated services that improve patient outcomes and experience, giving consumers more choice and control

**OUR VALUES**

***Community*** – We live and work in country communities. We are invested in the health, wellness and viability of country communities and the vibrancy, diversity and future of country WA.

***Compassion*** – We are inclusive, respectful, and considerate. We care deeply about the people in our care and country communities.

***Quality*** – We provide safe, high-quality care, constantly striving to innovate, improve and achieve trust in our care.

***Integrity*** – We bring honesty, collaboration and professionalism to everything that we do.

***Equity*** – We are passionate about fairness in healthcare for all Western Australians, especially the most vulnerable and disadvantaged people and communities.

***Curiosity*** – We continually enquire and seek to understand, using the best evidence, insight and research to improve care.

<p><b>WA Country Health Service – Great Southern</b></p> <p><b>29 April 2021</b></p> <p><b>REGISTERED</b></p>
---

<b>TITLE</b>	<b>Consultant - Surgeon – Orthopaedic Surgery</b>	<b>POSITION NO</b>	008035
		<b>CLASSIFICATION</b>	MP Year 1-9

**Section 4 – STATEMENT OF DUTIES**

<b>Duty No.</b>	<b>Details</b>	<b>Freq.</b>	<b>%</b>
<b>1</b>	<b>CLINICAL</b>		80
1.1	Provides orthopaedic inpatient and outpatient care in Albany Hospital and other sites in WACHS GS region in accordance with departmental needs and objectives including procedures and operations according to credentialing and scope of practice.	D	
1.2	Provides clinical oversight, support and advice to medical practitioners in WACHS GS in regard to orthopaedic patients.	R	
1.3	Ensures patient medical records are kept according to health service protocols and professional standards.	D	
1.4	Ensures discharge summaries and medical reports on inpatients that have been under their care are prepared promptly.	D	
1.5	Participate in after hours on-call roster.	D	
<b>2</b>	<b>ADMINISTRATION AND MANAGEMENT</b>		15
2.1	Participates in quality improvement programs and clinical governance activities applicable to orthopaedic surgery.	R	
2.2	Participates in hospital, regional and state committees as required.	R	
2.3	Attends to medico legal issues that arise concerning patients that have been under their care and advises the Medical Director about complaints received pertaining to themselves or other doctors in the hospital.	O	
<b>3</b>	<b>EDUCATION</b>		5
3.1	Promotes the development of training in medicine in country health. This would entail the direct supervision of pre and post graduate trainees in orthopaedics, as well as assisting gaining vocational training positions in orthopaedics.	R	
3.2	Maintain knowledge and expertise regarding developments in orthopaedic surgery.	R	
<b>4</b>	<b>OTHER</b>		
4.1	Other duties consistent with their role as directed.	O	
The occupant of this position will be expected to comply with and demonstrate a positive commitment to the highest achievement level in Equal Employment Opportunity, Occupational Safety & Health, Public Sector Standards, Code of Conduct, Code of Ethics, Quality Improvement, Performance Management, Customer Focus, Disability Services Act and Confidentiality throughout the course of their duties.			

<b>TITLE</b>	<b>Consultant - Surgeon – Orthopaedic Surgery</b>	<b>POSITION NO</b>	008035
		<b>CLASSIFICATION</b>	MP Year 1-9

### Section 5 – SELECTION CRITERIA

#### ESSENTIAL

1. Eligible for registration by the Medical Board of Australia
2. Fellowship of the Royal Australasian College of Surgeons (Orthopaedic) or equivalent
3. Substantial experience in orthopaedic surgery relevant to a regional centre
4. Demonstrated commitment to continuing education, quality improvement and the effective management of risk
5. High level of communication and interpersonal skills
6. Demonstrated capacity to work effectively and to lead in a team environment
7. Current knowledge of legislative obligations for Equal Opportunity, Disability Services and Occupational Safety and Health, and how these impact on employment and service delivery

#### DESIRABLE

1. Experience or qualifications in sub-specialty or procedural fields
2. Experience in regional/rural medicine
3. Experience working in a cross-cultural environment
4. Experience in postgraduate and undergraduate teaching
5. Training in clinical risk management and patient safety

### Section 6 – APPOINTMENT FACTORS

<b>Location</b>	Albany	<b>Accommodation</b>	As determined by the WA Country Health Service Policy
<b>Allowances/ Appointment Conditions</b>	Appointment is subject to: <ul style="list-style-type: none"> <li>• Evidence of registration by the Medical Board of Australia must be provided prior to commencement</li> <li>• Recognition as a Specialist Surgeon</li> <li>• Provision of the minimum identity proofing requirements.</li> <li>• Successful Criminal Record Screening clearance</li> <li>• Successful Pre-Employment Health Assessment</li> <li>• Successful WA Health Integrity Check</li> <li>• Successful Working With Children Check</li> <li>• Completion of training for Mandatory Reporting Of Child Sexual Abuse</li> </ul>		
<b>Specialised equipment operated</b>			

### Section 7 – CERTIFICATION

The details contained in this document are an accurate statement of the duties, responsibilities and other requirements of the position.

Signature and Date: \_\_\_\_/\_\_\_\_/\_\_\_\_  
**Manager**

Signature and Date: \_\_\_\_/\_\_\_\_/\_\_\_\_  
**Regional Director**

As occupant of the position I have noted the statement of duties, responsibilities and other requirements as detailed in this document.

Name	Signature	Date Appointed	Date Signed

