

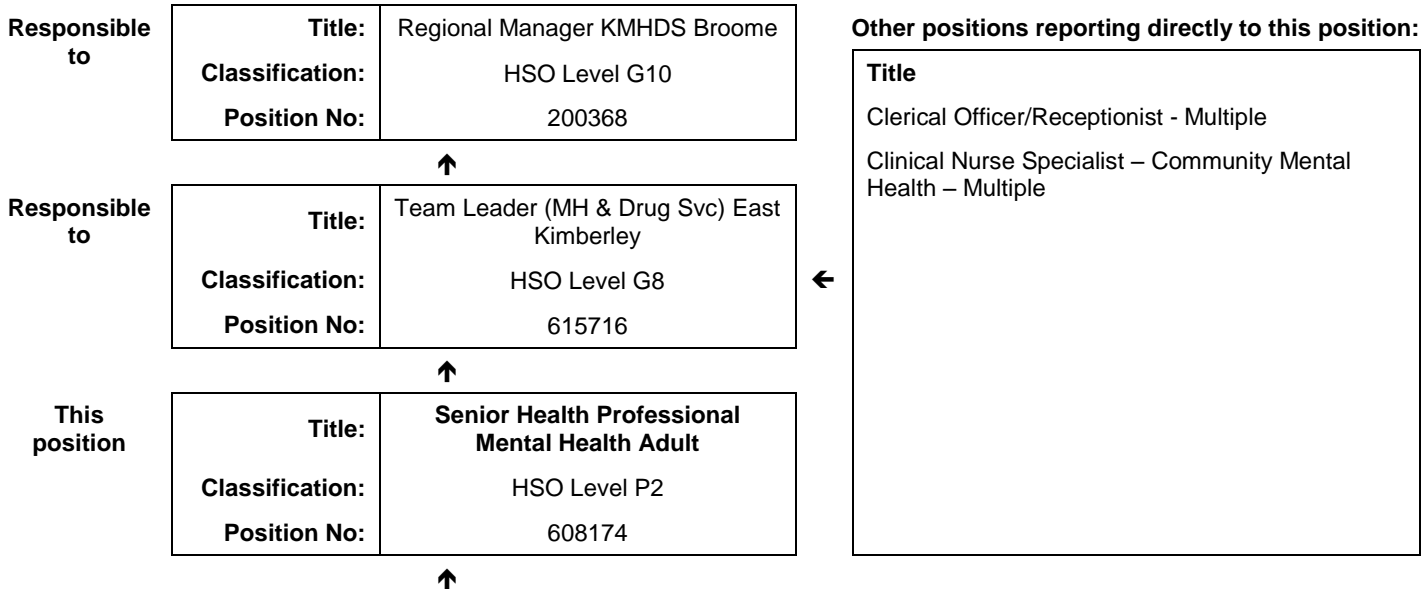


### JOB DESCRIPTION FORM

#### Section 1 - POSITION IDENTIFICATION

		<b>Position No:</b>	608174
<b>Division:</b>	Kimberley	<b>Title:</b>	<b>Senior Health Professional Mental Health Adult</b>
<b>Branch:</b>	Kimberley Mental Health and Drug Service, (KMHDS)	<b>Classification:</b>	HSO Level P2
<b>Section:</b>	Adult Community Mental Health Programme	<b>Award/Agreement:</b>	Health Salaried Officers Agreement

#### Section 2 - POSITION RELATIONSHIPS



<b>Positions under direct supervision:</b>		<b>← Other positions under control:</b>	
Position No	Title	Category	Number

#### Section 3 - KEY RESPONSIBILITIES

Provide advanced allied health community mental health services to clients of the KMHDS which is based on best practice. Provides a service, which is culturally secure and takes into account the emotional, social and spiritual well-being of clients.

TITLE	Senior Health Professional Mental Health Adult	POSITION NO	608174
		CLASSIFICATION	HSO Level P2



The WA Country Health Service (WACHS) is the largest country health system in Australia and one of the biggest in the world, providing health services to over half a million people, including over 50,000 Aboriginal people, over a vast two and a half million square kilometres area.

WA Country Health Service hospitals handle almost as many births as the State’s major maternity hospital – and 40% of the State’s emergency presentations. The range of health services provided include acute inpatient and emergency care, population and public health, mental health, Aboriginal health, aged care and includes increasing number of services provided by telehealth video-conferencing.

Our dedicated and committed staff work hard to fulfil our vision of Healthier country communities through partnerships and innovation, to deliver health services that support the health and well-being of individuals and communities in rural and remote Western Australia.

**OUR MISSION**

To deliver and advance high quality care for country WA communities

**OUR VISION**

To be a global leader in rural and remote healthcare

**OUR STRATEGIC PRIORITIES**

***Caring for our patients*** - Providing safe, patient-centred care, ensuring the needs of our patients are at the core of everything we do

***Addressing disadvantage and inequity*** - Delivering focussed and accessible services for those who need it most

***Building healthy, thriving communities*** - Supporting country people to be as healthy as they can be and continuing to play our part in the economic and social viability of country communities

***Delivering value and sustainability*** - Ensuring that the services we provide are sustainable and we are transparent about our performance

***Enabling our staff*** - Supporting our staff to deliver great care, empowering them to learn, grow, innovate and lead

***Leading innovation and technology*** - Embracing innovation and technology to create a safer, more connected and equitable health system

***Collaborating with our partners*** - Partnering to deliver more integrated services that improve patient outcomes and experience, giving consumers more choice and control

**OUR VALUES**

***Community*** – We live and work in country communities. We are invested in the health, wellness and viability of country communities and the vibrancy, diversity and future of country WA.

***Compassion*** – We are inclusive, respectful, and considerate. We care deeply about the people in our care and country communities.

***Quality*** – We provide safe, high-quality care, constantly striving to innovate, improve and achieve trust in our care.

***Integrity*** – We bring honesty, collaboration and professionalism to everything that we do.

***Equity*** – We are passionate about fairness in healthcare for all Western Australians, especially the most vulnerable and disadvantaged people and communities.

***Curiosity*** – We continually enquire and seek to understand, using the best evidence, insight and research to improve care.

**WA Country Health Service – KIMBERLEY**

**15 March 2021**

**REGISTERED**

<b>TITLE</b>	<b>Senior Health Professional Mental Health Adult</b>	<b>POSITION NO</b>	608174
		<b>WA Country Health Service – KIMBERLEY</b>	SO Level P2

15 March 2021  
REGISTERED

**Section 4 - STATEMENT OF DUTIES**

Duty No	Details		%
<b>1</b>	<b>CLINICAL</b>		<b>60</b>
1.1	Provides advanced allied health Psychology, Occupational Therapy or Social Work (as appropriate to profession) knowledge and skills consistent with contemporary practice and acts as a consultant and clinical resource to other staff and agencies.		
1.2	Provides specialist community mental health services for clients referred and their carer/s.		
1.3	Provides case management for cases allocated.		
1.4	Conducts Mental Health Triage, acute initial assessments, Risk Assessments crisis intervention, care management planning, treatment and implementation of care plan and referral services to clients and their carer/s.		
1.5	Actively participates in KMHDS clinical and service team meetings.		
1.6	Promotes and maintains effective communication lines with staff, client, carer/s and government and non-government agencies in relation to the care and management of referred clients.		
1.7	Acts as an advocate on behalf of the client and their carer/s.		
1.8	Provides expertise in the implementation of the Western Australia Mental Health Act (2014) legislation.		
1.9	Provides advanced mental health consultation and liaison to government and non-government agencies on mental health issues and in matters related to the management of shared clients and their carer/s.		
1.10	Participates in ongoing evaluation of clinical practice.		
1.11	Plans and undertakes advanced psycho social interventions with clients and their carer/s.		
<b>2</b>	<b>PROFESSIONAL</b>		<b>25</b>
2.1	Participates in professional development including professional supervision, performance management, further education and training and keeping up to date with new developments in mental health related relevant allied health practice.		
2.2	Provides clinical supervision and mentoring for students as required.		
2.3	Participates in service development, planning and evaluation of mental health services including services tailored to the needs of Aboriginal and Torres Strait Islander people (ATSI) people.		
2.4	Demonstrates advanced and effective written, verbal and interpersonal communication skills.		
2.5	Ensures resources are used effectively and efficiently including effective risk management.		
2.6	In conjunction with other staff plans, conducts, participates and evaluates staff development activities as well as educational programs for clients, carer/s, other health staff and community agencies as required.		
2.7	Participates in the development and delivery of evidence based Mental Health Recovery Programs.		
<b>3</b>	<b>QUALITY</b>		<b>10</b>
3.1	Provides and maintains appropriate data collection on health information databases as required.		
3.2	Promotes, utilises and participates in relevant multidisciplinary research and quality improvement programs, designed to improve practice and standards of care and service delivery.		
3.3	Participates in quality management programs and accreditation processes.		
3.4	Performs duties in accordance with relevant Occupational Safety and Health (OSH) and Equal Employment Opportunity (EEO) legislation.		
<b>4</b>	<b>OTHER</b>		<b>5</b>
4.1	Other duties as directed by line manager or their delegate.		

The occupant of this position will be expected to comply with and demonstrate a positive commitment to the WACHS values and the highest achievement in demonstrating positive commitment to Equal Employment Opportunity, Occupational Safety & Health, Public Sector Standards, Code of Conduct, Code of Ethics, Quality Improvement, Performance Management, Customer Focus, Disability Services Act and Confidentiality throughout the course of their duties.

<b>TITLE</b>	<b>Senior Health Professional Mental Health Adult</b>	<b>POSITION NO</b>	608174
		<b>CLASSIFICATION</b>	HSO Level P2

**WA Country Health Service – KIMBERLEY**

**15 March 2021**

**REGISTERED**

### Section 5 - SELECTION CRITERIA

#### ESSENTIAL:

- 1 Tertiary qualification in Social work or Occupational Therapy or Psychology or Registered Mental Health and eligible for registration with the relevant professional board or body.
- 2 Demonstrated advanced skills in community mental health management of complex psychiatric conditions, mental state assessment, risk assessment, crisis intervention and case management practice.
- 3 Significant, extensive and recent experience in the practice of their profession in community based mental health services.
- 4 Demonstrated ability to work alone and within a multidisciplinary team with advanced written, verbal and interpersonal communication skills.
- 5 Working knowledge of computer use and information systems relevant to the position.
- 6 Current knowledge of legislative obligations in relation to the Mental Health Act.
- 7 Current C Class drivers Licence and an ability and willingness to travel including overnight stays away from home.

#### DESIRABLE:

- 1 Current knowledge and commitment to Equal Opportunity in all aspects of employment and service delivery.
- 2 Current knowledge and obligations of relevant legislative, policy and practise in mental health including the National Standards for Mental Health Service, the Western Australian Mental Act (2014).
- 3 Experience providing mental health care to Indigenous people including remote Aboriginal communities.
- 4 Possession of or working towards a relevant qualification.

### Section 6 - APPOINTMENT FACTORS

<b>Location</b>	Kimberley	<b>Accommodation</b>	As per WACHS Kimberley policy
<b>Appointment/ Allowances Conditions</b>	Where applicable - District Allowance, Annual Leave Travel Concession, one week additional Annual leave for above the 26 <sup>th</sup> parallel, air conditioning subsidy. Appointment is subject to: <ul style="list-style-type: none"> <li>• Evidence of current registration by the Nursing and Midwifery Board of Australia must be provided prior to commencement</li> <li>• Successful Working With Children Check</li> <li>• Evidence of a current C class driver's licence and ability to travel within the region as required including overnight stays</li> <li>• Provision of the minimum identity proofing requirements</li> <li>• Successful Criminal Record Screening clearance</li> <li>• Successful Pre-Employment Health Assessment</li> <li>• Successful WA Health Integrity Check</li> </ul>		
<b>Specialised equipment operated</b>			

### Section 7 - CERTIFICATION

The details contained in this document are an accurate statement of the duties, responsibilities and other requirements of the position.

Signature and Date: \_\_\_\_/\_\_\_\_/\_\_\_\_

Signature and Date: \_\_\_\_/\_\_\_\_/\_\_\_\_

**Manager  
Kimberley Mental Health and Drug Service**

**Regional Director  
WACHS Kimberley**

As occupant of the position I have noted the statement of duties, responsibilities and other requirements as detailed in this document.

Name	Signature	Date Appointed	Date Signed