

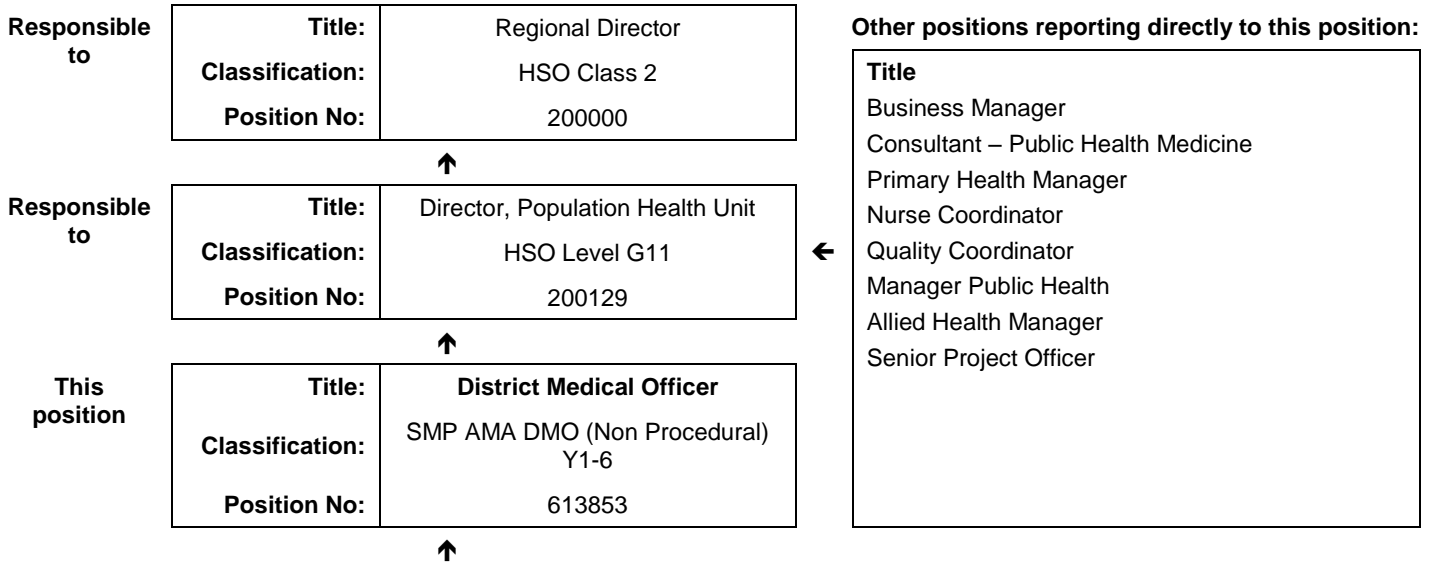


JOB DESCRIPTION FORM

Section 1 - POSITION IDENTIFICATION

		Position No:	613853
Division:	Kimberley	Title:	District Medical Officer
Branch:	Kimberley Population Health Unit	Classification:	SMP AMA DMO (Non Procedural) Y1-6
Section:	KPHU – Chronic Disease	Award/Agreement:	Medical Practitioners (WA Country Health Service) Agreement

Section 2 - POSITION RELATIONSHIPS



Positions under direct supervision:	← Other positions under control:								
<table style="width: 100%; border-collapse: collapse;"> <thead> <tr> <th style="width: 50%;">Position No</th> <th style="width: 50%;">Title</th> </tr> </thead> <tbody> <tr> <td>N/A</td> <td></td> </tr> </tbody> </table>	Position No	Title	N/A		<table style="width: 100%; border-collapse: collapse;"> <thead> <tr> <th style="width: 50%;">Category</th> <th style="width: 50%;">Number</th> </tr> </thead> <tbody> <tr> <td>N/A</td> <td></td> </tr> </tbody> </table>	Category	Number	N/A	
Position No	Title								
N/A									
Category	Number								
N/A									

Section 3 - KEY RESPONSIBILITIES

Provides comprehensive medical services in the three main areas of maternal and child health; chronic conditions prevention and coordinated care; and communicable disease control. The Fitzroy Valley is the focus of direct clinical care and the role also participates in service development and reform; clinical governance and quality improvement initiatives addressing Aboriginal health across primary health care. It provides clinical support and contributes to teaching and up skilling of primary health care staff and students throughout the region.

This position is substantively line managed by the Director, Population health Unit, but has a professional reporting line to the Regional Director of Medical Services.

TITLE	District Medical Officer	POSITION NO	613853
		CLASSIFICATION	SMP AMA DMO (Non Procedural) Y1-6



The WA Country Health Service (WACHS) is the largest country health system in Australia and one of the biggest in the world, providing health services to over half a million people, including over 50,000 Aboriginal people, over a vast two and a half million square kilometres area.

WA Country Health Service hospitals handle almost as many births as the State's major maternity hospital – and 40% of the State's emergency presentations. The range of health services provided include acute inpatient and emergency care, population and public health, mental health, Aboriginal health, aged care and includes increasing number of services provided by telehealth video-conferencing.

Our dedicated and committed staff work hard to fulfil our vision of Healthier country communities through partnerships and innovation, to deliver health services that support the health and well-being of individuals and communities in rural and remote Western Australia.

WA Country Health Service – KIMBERLEY

23 December 2020

REGISTERED

OUR MISSION

To deliver and advance high quality care for country WA communities

OUR VISION

To be a global leader in rural and remote healthcare

OUR STRATEGIC PRIORITIES

Caring for our patients - Providing safe, patient-centred care, ensuring the needs of our patients are at the core of everything we do

Addressing disadvantage and inequity - Delivering focussed and accessible services for those who need it most

Building healthy, thriving communities - Supporting country people to be as healthy as they can be and continuing to play our part in the economic and social viability of country communities

Delivering value and sustainability - Ensuring that the services we provide are sustainable and we are transparent about our performance

Enabling our staff - Supporting our staff to deliver great care, empowering them to learn, grow, innovate and lead

Leading innovation and technology - Embracing innovation and technology to create a safer, more connected and equitable health system

Collaborating with our partners - Partnering to deliver more integrated services that improve patient outcomes and experience, giving consumers more choice and control

OUR VALUES

Community – We live and work in country communities. We are invested in the health, wellness and viability of country communities and the vibrancy, diversity and future of country WA.

Compassion – We are inclusive, respectful, and considerate. We care deeply about the people in our care and country communities.

Quality – We provide safe, high-quality care, constantly striving to innovate, improve and achieve trust in our care.

Integrity – We bring honesty, collaboration and professionalism to everything that we do.

Equity – We are passionate about fairness in healthcare for all Western Australians, especially the most vulnerable and disadvantaged people and communities.

Curiosity – We continually enquire and seek to understand, using the best evidence, insight and research to improve care.

TITLE	District Medical Officer	POSITION NO	613853
		CLASSIFICATION	SMP AMA DMO (Non Procedural) Y1-6

Section 4 - STATEMENT OF DUTIES

Duty No	Details	Freq	%
1	CLINICAL		40
1.1	Provides medical services in the Fitzroy Valley Region mainly in the field of chronic disease, in community and outpatient settings: completing health checks, GP Management Plans and Team Care Arrangements for the eligible population.		
1.2	Supports Aboriginal health workers, community nurses and remote area nurses, and allied health staff by providing targeted medical care and through clinical support in maternal and child health, chronic conditions management and communicable disease management.		
1.3	Reports notifiable diseases promptly as required.		
1.4	Works collaboratively to integrate general medical services in primary health care.		
2	EDUCATION OF STAFF, COMMUNITIES AND PATIENTS		40
2.1	Provides on-site teaching/learning activities for Aboriginal health workers, nursing, allied health and medical staff in the Fitzroy Valley.		
2.2	Participates in community education programs addressing identified health priorities.		
2.3	Initiates and participates in health service development utilising reflective practice and quality improvement methods, and through clinical governance and clinical leadership.		
2.4	Provides clinical support to front line primary health care staff across KPHU as appropriate.		
2.5	Liaises closely with and works collaboratively with regional and visiting medical practitioners.		
2.6	Assists other medical staff and supervises medical students with respect to their learning goals and objectives as relevant in primary health care.		
3	MANAGEMENT AND ADMINISTRATION		15
3.1	Liaises with the KPHU management staff, and resident community health staff to ensure provision of optimal primary health care in the Fitzroy Valley.		
3.2	Contributes to the development and implementation of evidence-based policies in primary health care that are relevant to the community setting in the Kimberley region.		
3.3	Prepares and conducts professional reports, reviews and other requests pertaining to patient care.		
3.4	Actively engages the health promotion team to ensure a best practice approach to preventive health.		
3.5	Participates in performance development and service review with the KPHU director.		
4	OTHER		5
4.1	Other duties as directed by line manager or their delegate.		

The occupant of this position will be expected to comply with and demonstrate a positive commitment to the WACHS values and the highest achievement in demonstrating positive commitment to Equal Employment Opportunity, Occupational Safety & Health, Public Sector Standards, Code of Conduct, Code of Ethics, Quality Improvement, Performance Management, Customer Focus, Disability Services Act and Confidentiality throughout the course of their duties.

WA Country Health Service – KIMBERLEY

23 December 2020

REGISTERED

TITLE	District Medical Officer	POSITION NO	613853
		CLASSIFICATION	SMP AMA DMO (Non Procedural) Y1-6

Section 5 - SELECTION CRITERIA

ESSENTIAL:

- 1 Eligible for unconditional registration by the Medical Board of Western Australia.
- 2 Fellowship of the Royal Australian College of General Practitioners or Australian College of Rural and Remote Medicine or relevant equivalent experience as a Vocationally Registered Senior Medical Practitioner/General Practitioner.
- 3 Significant clinical experience in the primary health care setting including shared care.
- 4 Demonstrated ability in, and commitment to, the provision of ambulatory/community based services and utilising population health skills to address health.
- 5 Demonstrated understanding of cultural factors and social determinants particularly relating to Aboriginal health.
- 6 Highly developed communication, interpersonal, team membership, and negotiation and conflict resolution skills.
- 7 Current C Class Driver's Licence and an ability and willingness to travel to remote communities, where the role is based.

DESIRABLE:

- 1 Current knowledge and commitment to Equal Opportunity in all aspects of employment and service delivery.
- 2 Computer skills including familiarity with electronic health record systems and quantitative data analysis programs.
- 3 Working knowledge of the Medical Benefits Schedule, Prescription Benefits Scheme and quality use of medicines.

Section 6 - APPOINTMENT FACTORS

Location	Kimberley Negotiable	Accommodation	As per WACHS Kimberley policy
Appointment/ Allowances Conditions	Where applicable - District Allowance, Annual Leave Travel Concession, one week additional Annual leave for above the 26 th parallel, air conditioning subsidy. Appointment is subject to: <ul style="list-style-type: none"> • Evidence of registration by the Medical Board of Australia must be provided prior to commencement • Provision of the minimum identity proofing requirements • Successful Criminal Record Screening clearance • Successful Pre-Employment Health Assessment • Successful WA Health Integrity Check • Successful Working With Children Check • Evidence of a current C or C-A class driver's licence and ability to travel within the region as required including overnight stays 		
Specialised equipment operated			

Section 7 - CERTIFICATION

The details contained in this document are an accurate statement of the duties, responsibilities and other requirements of the position.

Signature and Date: ____/____/____

Signature and Date: ____/____/____

**Director
Kimberley Population Health Unit**

**Regional Director
WACHS Kimberley**

As occupant of the position I have noted the statement of duties, responsibilities and other requirements as detailed in this document.

Name	Signature	Date Appointed	Date Signed

