

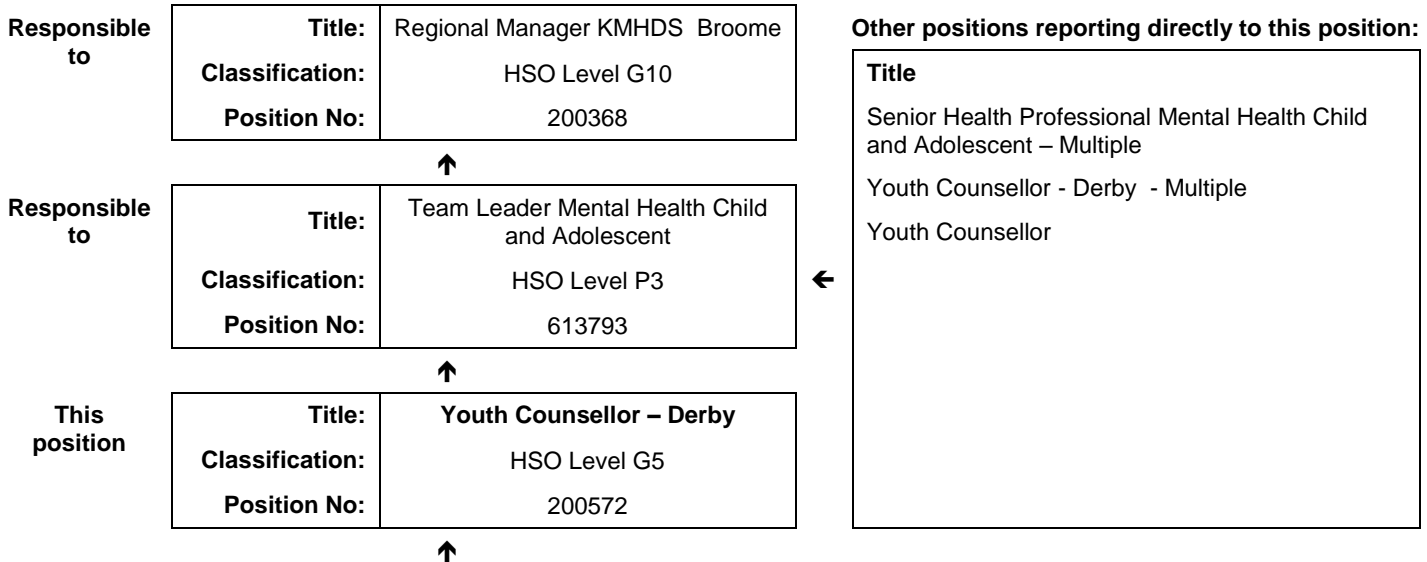


## JOB DESCRIPTION FORM

### Section 1 - POSITION IDENTIFICATION

		<b>Position No:</b>	200572
<b>Division:</b>	Kimberley	<b>Title:</b>	<b>Youth Counsellor - Derby</b>
<b>Branch:</b>	Kimberley Mental Health and Drug Service (KMHDS)	<b>Classification:</b>	HSO Level G5
<b>Section:</b>	Child and Adolescent Mental Health Services (CAMHS)	<b>Award/Agreement:</b>	Health Salaried Officers Agreement

### Section 2 - POSITION RELATIONSHIPS



<b>Positions under direct supervision:</b>	<b>← Other positions under control:</b>								
<table border="1" style="width: 100%;"> <tr> <th style="width: 50%;">Position No</th> <th style="width: 50%;">Title</th> </tr> <tr> <td> </td> <td> </td> </tr> </table>	Position No	Title			<table border="1" style="width: 100%;"> <tr> <th style="width: 60%;">Category</th> <th style="width: 40%;">Number</th> </tr> <tr> <td> </td> <td> </td> </tr> </table>	Category	Number		
Position No	Title								
Category	Number								

### Section 3 - KEY RESPONSIBILITIES

To develop, implement and maintain early intervention mental health programs for young people with psychological, emotional and behavioural problems, to reduce the development of more serious mental health disorders. To develop referral networks with primary health, youth and specialist mental health services.

TITLE	Youth Counsellor – Derby	POSITION NO	200572
		CLASSIFICATION	HSO Level G5



The WA Country Health Service (WACHS) is the largest country health system in Australia and one of the biggest in the world, providing health services to over half a million people, including over 50,000 Aboriginal people, over a vast two and a half million square kilometres area.

WA Country Health Service hospitals handle almost as many births as the State’s major maternity hospital – and 40% of the State’s emergency presentations. The range of health services provided include acute inpatient and emergency care, population and public health, mental health, Aboriginal health, aged care and includes increasing number of services provided by telehealth video-conferencing.

Our dedicated and committed staff work hard to fulfil our vision of Healthier country communities through partnerships and innovation, to deliver health services that support the health and well-being of individuals and communities in rural and remote Western Australia.

**OUR MISSION**

To deliver and advance high quality care for country WA communities

**OUR VISION**

To be a global leader in rural and remote healthcare

**OUR STRATEGIC PRIORITIES**

***Caring for our patients*** - Providing safe, patient-centred care, ensuring the needs of our patients are at the core of everything we do

***Addressing disadvantage and inequity*** - Delivering focussed and accessible services for those who need it most

***Building healthy, thriving communities*** - Supporting country people to be as healthy as they can be and continuing to play our part in the economic and social viability of country communities

***Delivering value and sustainability*** - Ensuring that the services we provide are sustainable and we are transparent about our performance

***Enabling our staff*** - Supporting our staff to deliver great care, empowering them to learn, grow, innovate and lead

***Leading innovation and technology*** - Embracing innovation and technology to create a safer, more connected and equitable health system

***Collaborating with our partners*** - Partnering to deliver more integrated services that improve patient outcomes and experience, giving consumers more choice and control

**OUR VALUES**

***Community*** – We live and work in country communities. We are invested in the health, wellness and viability of country communities and the vibrancy, diversity and future of country WA.

***Compassion*** – We are inclusive, respectful, and considerate. We care deeply about the people in our care and country communities.

***Quality*** – We provide safe, high-quality care, constantly striving to innovate, improve and achieve trust in our care.

***Integrity*** – We bring honesty, collaboration and professionalism to everything that we do.

***Equity*** – We are passionate about fairness in healthcare for all Western Australians, especially the most vulnerable and disadvantaged people and communities.

***Curiosity*** – We continually enquire and seek to understand, using the best evidence, insight and research to improve care.

**WA Country Health Service**

**25 September 2019**

**REGISTERED**

<b>TITLE</b>	<b>Youth Counsellor – Derby</b>	<b>POSITION NO</b>	200572
		<b>CLASSIFICATION</b>	HSO Level G5

#### Section 4 - STATEMENT OF DUTIES

<b>Duty No</b>	<b>Details</b>	<b>Freq</b>	<b>%</b>
<b>1</b>	<b>COUNSELLING</b>		<b>50</b>
1.1	Establishes and maintains links with marginalised youth (12 to 25), particularly young people 'at risk' of self-harm, and living in the Kimberley region.		
1.2	Provides a point of contact for young people (12 to 25) to promote access to health, education and training, recreation, employment and cultural services and activities.		
1.3	Provides individual and group counselling to youth experiencing psychological, emotional or behavioural problems.		
1.4	Provides support, education, information, and counselling where appropriate, to carers, family members and partners of youth who are experiencing problems within the community.		
1.5	Liaises with other government and non-government agencies and facilitates referral to youth appropriate agencies as required.		
<b>2</b>	<b>COMMUNITY LIAISON AND EDUCATION</b>		<b>30</b>
2.1	Works with community organisations, local government, and state and commonwealth government agencies to provide support and services for youth.		
2.2	Liaises closely with the local Youth Networks – to facilitate outreach services for youth in more isolated and remote areas.		
2.3	Supports and promotes community initiatives regarding youth issues.		
2.4	Initiates, develops, implements and facilitates appropriate programs, education and training for young people and other service providers.		
<b>3</b>	<b>MANAGEMENT/ADMINISTRATION</b>		<b>10</b>
3.1	Maintains adequate records and collates statistical data in accordance with the requirements of the Kimberley Mental Health and Drug Service.		
3.2	Participates in regular meetings and supervision with local mental health teams.		
3.3	Complies with EEO and OH&S principles, standards of practice and policies and procedures.		
<b>4</b>	<b>EDUCATION AND RESEARCH</b>		<b>5</b>
4.1	Participates in professional development programs.		
4.2	Participates in quality assurance activities.		
<b>5</b>	<b>GENERAL</b>		<b>5</b>
5.1	Ability to travel and spend occasional nights away from home, and participate in after-hours work when necessary.		
5.2	Other duties as directed by the line manager or their delegate.		

The occupant of this position will be expected to comply with and demonstrate a positive commitment to the WACHS values and the highest achievement in demonstrating positive commitment to Equal Employment Opportunity, Occupational Safety & Health, Public Sector Standards, Code of Conduct, Code of Ethics, Quality Improvement, Performance Management, Customer Focus, Disability Services Act and Confidentiality throughout the course of their duties.

**WA Country Health Service**

**25 September 2019**

**REGISTERED**

<b>TITLE</b>	<b>Youth Counsellor – Derby</b>	<b>POSITION NO</b>	200572
		<b>CLASSIFICATION</b>	HSO Level G5

## Section 5 - SELECTION CRITERIA

### ESSENTIAL:

- 1 Appropriate qualification, training and/or experience in youth counselling.
- 2 Demonstrated experience working with young people, particularly those 'at risk' of self-harm.
- 3 Skills to plan, develop, implement and evaluate youth counselling programs.
- 4 Knowledge and understanding of mental health, alcohol and other drug problems, particularly in relation to factors that affect young people.
- 5 Current C Class drivers Licence and an ability and willingness to travel including overnight stays away from home.
- 6 Experience in working in cross cultural environment, rural and remote areas.

### DESIRABLE:

- 1 Current knowledge and commitment to Equal Opportunity in all aspects of employment and service delivery.
- 2 Tertiary qualification in health science, community development or other relevant area.

## Section 6 - APPOINTMENT FACTORS

<b>Location</b>	Derby	<b>Accommodation</b>	As per WACHS Kimberley policy
<b>Appointment/ Allowances Conditions</b>	Where applicable - District Allowance, Annual Leave Travel Concession, one week additional Annual leave for above the 26 <sup>th</sup> parallel, air conditioning subsidy. Appointment is subject to: <ul style="list-style-type: none"> <li>• Successful Working With Children Check</li> <li>• Evidence of a current C class driver's licence and ability to travel within the region as required including overnight stays</li> <li>• Provision of the minimum identity proofing requirements</li> <li>• Successful Criminal Record Screening clearance</li> <li>• Successful Pre-Employment Health Assessment</li> <li>• Successful WA Health Integrity Check</li> </ul>		
<b>Specialised equipment operated</b>			

## Section 7 - CERTIFICATION

The details contained in this document are an accurate statement of the duties, responsibilities and other requirements of the position.

Signature and Date: \_\_\_\_/\_\_\_\_/\_\_\_\_

**Manager**  
**Kimberley Mental Health and Drug Service**

Signature and Date: \_\_\_\_/\_\_\_\_/\_\_\_\_

**Regional Director**  
**WACHS Kimberley**

As occupant of the position I have noted the statement of duties, responsibilities and other requirements as detailed in this document.

Name	Signature	Date Appointed	Date Signed

**WA Country Health Service**

**25 September 2019**

**REGISTERED**