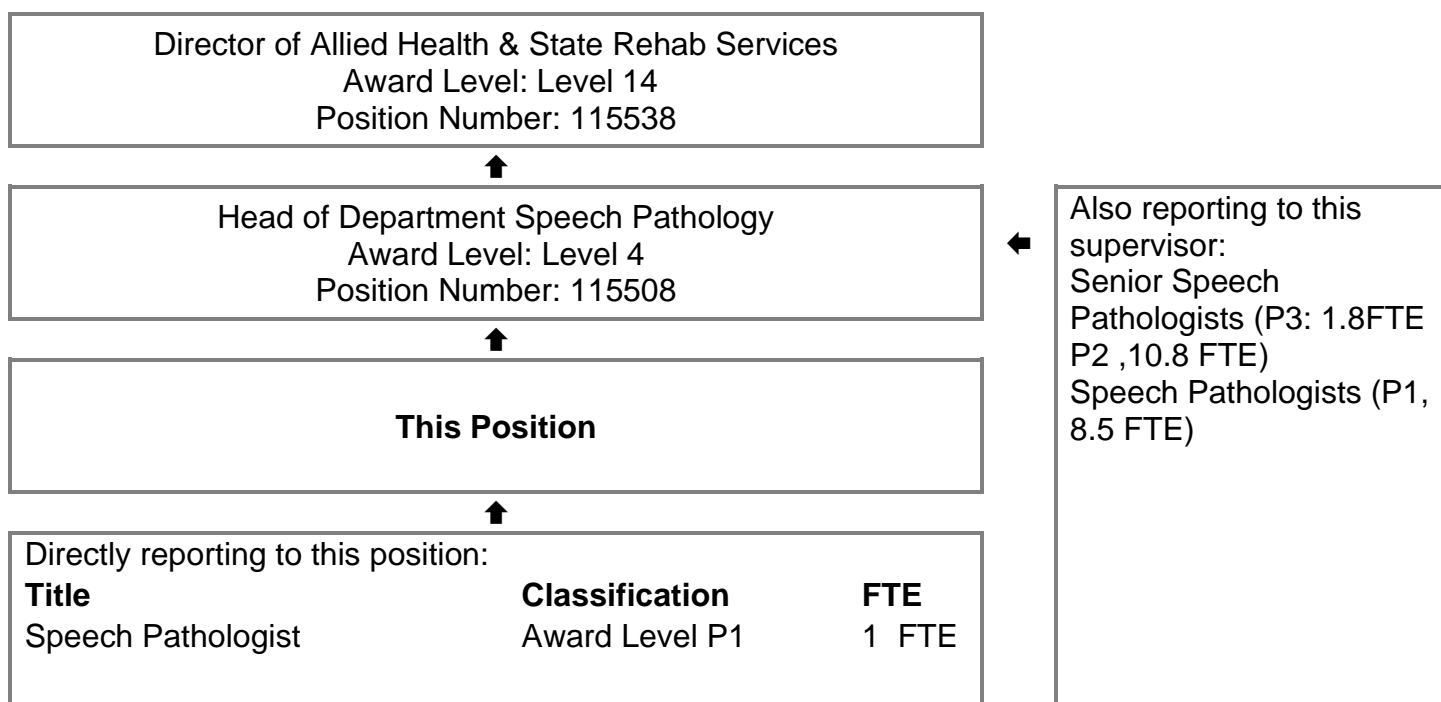


HSS Registered

Senior Speech Pathologist
Health Salaried Officers Agreement: HSO Level P2
Position Number: 114301
Speech Pathology - Acquired Brain Injury Unit Rehabilitation
Allied Health
Fiona Stanley Fremantle Hospital Group/ South Metropolitan Health Service

Reporting Relationships



Key Responsibilities
 Undertakes professional practice as a Senior Speech Pathologist in accordance to the Speech Pathology Australia Code of Ethics, the Speech Pathology Australia Scope of Practice, the FSFHG Allied Health Credentialing Policy and Procedure and SMHS policies and guidelines. As part of the inter-disciplinary rehabilitation team, provides an advanced level of speech pathology clinical practice and expertise in both direct care delivery and support to other staff in the Acquired Brain injury Unit within the State Rehabilitation Service. The focus of the role is to provide advanced, high quality assessment, diagnosis and management of communication and swallowing disorders, and contribute to the profession through application of evidence based practice and policy. This role supports the Head of Department Speech Pathology in providing supervision to staff in the unit/clinical area, including allocating clinical duties and in managing performance. Acts as a Speech Pathology clinical consultant/resource to Speech Pathologists and other health professionals in the areas of specialty. Plans, implements and evaluates patient safety and quality of care in the area of specialty.

Brief Summary of Duties (in order of importance)

1. Clinical

- 1.1 Provide evidence based Speech Pathology services to patients/clients within the clinical specialty area/s.
- 1.2 Provide Speech Pathology assessment, intervention and evaluation at an advanced practice level for complex and general caseload/s.
- 1.3 Undertake clinical shifts at the direction of the Allied Health Head of Service and Allied Health Coordinator including participation on the on-call/after-hours/weekend roster if required.
- 1.4 Ensure prioritisation and delegation of duties of Speech Pathology caseloads for own and staff under their supervision.
- 1.5 Participate in clinical review meetings and case conferences as appropriate.
- 1.6 Provide advanced clinical consultation to Speech Pathologists, other health professionals and others.
- 1.7 Identify opportunities and participate in quality improvement activities in consultation with the Allied Health Head of Service and Allied Health Coordinator to systematically evaluate service delivery and meet customer needs.
- 1.8 Educate patients/carers in post discharge management and organise discharge summaries/referrals to other services, as appropriate.
- 1.9 Support and liaise with patients, carers, colleagues, medical, nursing, allied health, support staff (including Catering), external agencies and the private sector to provide coordinated multidisciplinary care.
- 1.10 Ensure maintenance of appropriate clinical documentation and clinical information systems required of Speech Pathology staff under their supervision including own caseload.
- 1.11 Participate in Service stream meetings as required to meet organisational and service objectives.
- 1.12 Participate in ongoing evaluation of clinical practice.

2. Education/Training/Research

- 2.1 Engage in continuing professional development/education and ensures continuous eligibility for membership of Speech Pathology Australia (SPA) as per essential criterion 1.
- 2.2 Ensure professional support, clinical orientation and direction is provided to P1 staff as set by the Allied Health Education Director.
- 2.3 Undertake supervision and development of Speech Pathology students and other tertiary students if appropriate.
- 2.4 Develop and participate in evidence based clinical research activities, where applicable, as directed by the Allied Health Head of Service/Allied Health Research Director.

3. SMHS Governance, Safety and Quality Requirements

- 3.1 Ensures, as far as practicable, the provision of a safe working environment in consultation with staff under their supervision
- 3.2 Participates in an annual performance development review and undertakes performance development review of staff under their supervision.
- 3.3 Supports the delivery of safe patient care and the consumers' experience including identifying, facilitating and participating in continuous safety and quality improvement activities, and ensuring services and practices align with the requirements of the National Safety and Quality Health Service Standards and other recognised health standards.
- 3.4 Completes mandatory training (including safety and quality training) as relevant to role.
- 3.5 Performs duties in accordance with Government, WA Health, South Metropolitan Health Service and Departmental / Program specific policies and procedures.

3.6 Abides by the WA Health Code of Conduct, Occupational Safety and Health legislation, the Disability Services Act and the Equal Opportunity Act.

4. Undertakes other duties as directed.

Work Related Requirements

Essential Selection Criteria

1. Tertiary qualification in Speech Pathology and eligible for full membership of Speech Pathology Australia (SPA).
2. Demonstrated advanced clinical and leadership skills and extensive experience in assessment, treatment and evaluation including application of evidence based practice within the relevant specialty area/s.
3. Demonstrated ability in applying high-level self-management and organisational skills.
4. Demonstrated high level interpersonal, written and verbal communication skills including the ability to work effectively in a multidisciplinary team.
5. Demonstrated ability to plan, coordinate, implement and evaluate Speech Pathology services including experience in quality improvement activities.
6. Appropriate supervision training and demonstrated ability to provide clinical practice education and supervision to staff and students.
7. Current knowledge of legislative obligations for Equal Opportunity, Disability Services and Occupational Safety and Health, and how these impact on employment and service delivery.

Desirable Selection Criteria

1. Demonstrated competence in instrumental swallowing assessment
2. Completion or progress toward a relevant postgraduate qualification in a relevant clinical area.

Appointment Prerequisites

Appointment is subject to:

- Evidence of eligibility for or current full membership of Speech Pathology Australia (SPA) must be provided prior to commencement.
- Working with Children (WWC) Check, compulsory check for people who carry out child-related work in Western Australia.
- Provision of the minimum identity proofing requirements.
- Successful Criminal Record Screening Clearance.
- Successful Pre-Employment Integrity Check.
- Successful Pre-Employment Health Assessment.

Certification

The details contained in this document are an accurate statement of the duties, responsibilities and other requirements of the position.

.....
Manager / Supervisor

.....
Signature or

.....
HE Number

.....
Date

.....
Dept. / Division Head Name

.....
Signature or

.....
HE Number

.....
Date

As Occupant of the position I have noted the statement of duties, responsibilities and other requirements as detailed in this document.

.....
Occupant Name

.....
Signature or

.....
HE Number

.....
Date

.....
Effective Date

HSS Registration Details (to be completed by HSS)

Created on

Last Updated on

June 2020