

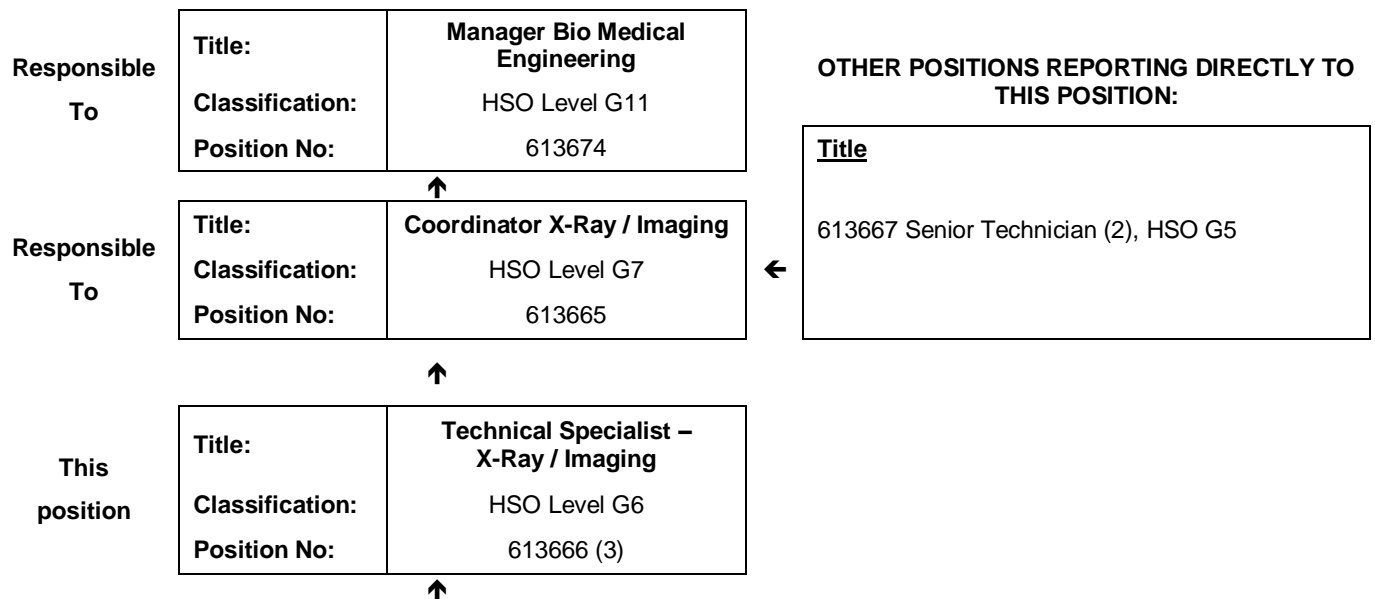


JOB DESCRIPTION FORM

Section 1 – POSITION IDENTIFICATION

WA COUNTRY HEALTH SERVICE		Position No:	613666
Division:	Central Office	Title:	Technical Specialist
Branch:	Infrastructure	Classification:	HSO Level G6
Section:	Biomedical Engineering	Award/Agreement:	Health Salaried Officers Agreement

Section 2 – POSITION RELATIONSHIPS



Positions under direct supervision:		← Other positions under control:	
Position No.	Title	Category	Number

Section 3 – KEY RESPONSIBILITIES

Provides specialist technical support, advice and training in X-Ray/Imaging equipment for statewide health sites. Repairs and maintains complex X-Ray/Imaging equipment.

TITLE	Technical Specialist	POSITION NO	613666
		CLASSIFICATION	HSO Level G6



The WA Country Health Service (WACHS) is the largest country health system in Australia and one of the biggest in the world, providing health services to over half a million people, including over 50,000 Aboriginal people, over a vast two and a half million square kilometres area.

WA Country Health Service hospitals handle almost as many births as the State's major maternity hospital – and 40% of the State's emergency presentations. The range of health services provided include acute inpatient and emergency care, population and public health, mental health, Aboriginal health, aged care and includes increasing number of services provided by telehealth video-conferencing.

Our dedicated and committed staff work hard to fulfil our vision of Healthier country communities through partnerships and innovation, to deliver health services that support the health and well-being of individuals and communities in rural and remote Western Australia.

OUR MISSION

To deliver and advance high quality care for country WA communities

OUR VISION

To be a global leader in rural and remote healthcare

OUR STRATEGIC PRIORITIES

Caring for our patients - Providing safe, patient-centred care, ensuring the needs of our patients are at the core of everything we do

Addressing disadvantage and inequity - Delivering focussed and accessible services for those who need it most

Building healthy, thriving communities - Supporting country people to be as healthy as they can be and continuing to play our part in the economic and social viability of country communities

Delivering value and sustainability - Ensuring that the services we provide are sustainable and we are transparent about our performance

Enabling our staff - Supporting our staff to deliver great care, empowering them to learn, grow, innovate and lead

Leading innovation and technology - Embracing innovation and technology to create a safer, more connected and equitable health system

Collaborating with our partners - Partnering to deliver more integrated services that improve patient outcomes and experience, giving consumers more choice and control

OUR VALUES

Community – We live and work in country communities. We are invested in the health, wellness and viability of country communities and the vibrancy, diversity and future of country WA.

Compassion – We are inclusive, respectful, and considerate. We care deeply about the people in our care and country communities.

Quality – We provide safe, high-quality care, constantly striving to innovate, improve and achieve trust in our care.

Integrity – We bring honesty, collaboration and professionalism to everything that we do.

Equity – We are passionate about fairness in healthcare for all Western Australians, especially the most vulnerable and disadvantaged people and communities.

Curiosity – We continually enquire and seek to understand, using the best evidence, insight and research to improve care.

TITLE	Technical Specialist	POSITION NO	613666
		CLASSIFICATION	HSO Level G6

Section 4 – STATEMENT OF DUTIES

Duty No.	Details	Freq.	%
1.	TECHNICAL	D	45
1.1	Repairs complex and specialised X-Ray/Imaging equipment for statewide health sites.		
1.2	Evaluates and prioritises requests for breakdown services and arranges loan of equipment.		
1.3	Carries out modifications, calibrations and other specialised tasks.		
1.4	Leads teams to install and relocate X-Ray/Imaging equipment.		
1.5	Provides advice to staff at health sites in response to breakdown repairs to complex and specialised X-Ray/Imaging equipment.		
1.6	Conducts statewide safety and functional tests on complex and specialised X-Ray/Imaging equipment.		
2.	CONSULTANCY	R	50
2.1	Provides information and advice to staff at health sites for the purchase and long-term replacement planning of X-Ray/Imaging equipment.		
2.2	Provides advice and training for users on correct and safe use of equipment.		
2.3	Provides specialist support to X-Ray/Imaging Section.		
2.4	Provides training, guidance and advice to other technicians.		
2.5	Maintains a technical library and inventory on specialised X-Ray/Imaging equipment.		
2.6	Maintains expertise and technical knowledge of specialised X-Ray/Imaging equipment.		
2.7	Sources spare parts for specialised X-Ray/Imaging equipment.		
2.8	Develops testing tools and conducts acceptance tests on new equipment on behalf of purchasers and evaluates equipment for inclusion on tender.		
2.9	Assists in developing protocols and procedures to ensure high standard of services and compliance with regulations.		
3.	OTHER	O	5
3.1	Provides out of hours support as required.		
3.2	Performs duties of Coordinator as required and carries out other duties as required.		

The occupant of this position will be expected to comply with and demonstrate a positive commitment to the WACHS values and the highest achievement in demonstrating positive commitment to Equal Employment Opportunity, Occupational Safety & Health, Public Sector Standards, Code of Conduct, Code of Ethics, Quality Improvement, Performance Management, Customer Focus, Disability Services Act and Confidentiality throughout the course of their duties.

TITLE	Technical Specialist	POSITION NO	613666
		CLASSIFICATION	HSO Level G6

Section 5 – SELECTION CRITERIA

ESSENTIAL

1. Certificate or Associate Diploma in Electronics or equivalent.
2. Considerable experience in repair, servicing and installation of X-Ray/Imaging equipment, or substantial practical experience in analogue and digital electronics and knowledge of medical terminology and clinical procedures relevant to the use of X-Ray/Imaging equipment.
3. Substantial knowledge related to complex and specialist X-Ray/Imaging equipment and an ability to impart this technical knowledge to others.
4. Excellent interpersonal, verbal and written communication skills including customer service and relationship skills.
5. Excellent problem solving skills including conceptual and analytical skills.
6. Ability to work independently without direct supervision.
7. Current License for servicing X-Ray equipment.
8. Eligible for / or in possession of a current C or C-A Class drivers licence.

DESIRABLE

1. Experience on 240/415-v equipment.
2. Experience in using word processing, spreadsheets and database computer software applications.
3. Current knowledge and commitment to Equal Opportunity in all aspects of employment and service delivery.

Section 6 – APPOINTMENT FACTORS

Location	Perth	Accommodation	Nil
Allowances/ Appointment Conditions	Appointment is subject to: <ul style="list-style-type: none"> • Provision of the minimum identity proofing requirements. • Successful Criminal Record Screening clearance • Successful Pre-Employment Health Assessment • Successful WA Health Integrity Check • Evidence of a current C or C-A class driver's licence and ability to travel within the region as required • Availability to regularly travel throughout the State and infrequently travel interstate and/or overseas as required. • Eligibility for National Restricted Electrical License (NREL) or possession of an 'R' Electrical Workers Licence or better. • Availability to work outside normal business hours. • Current licence for servicing X-ray equipment. • Travel allowance payable 		
Specialised equipment operated	X-ray/Imaging and ancillary equipment and specialised test equipment.		

Section 7 – CERTIFICATION

The details contained in this document are an accurate statement of the duties, responsibilities and other requirements of the position.

Signature and Date: ____/____/____
Executive Services

Signature and Date: ____/____/____
Chief Executive Officer

As occupant of the position I have noted the statement of duties, responsibilities and other requirements as detailed in this document.

Name	Signature	Date Appointed	Date Signed

