

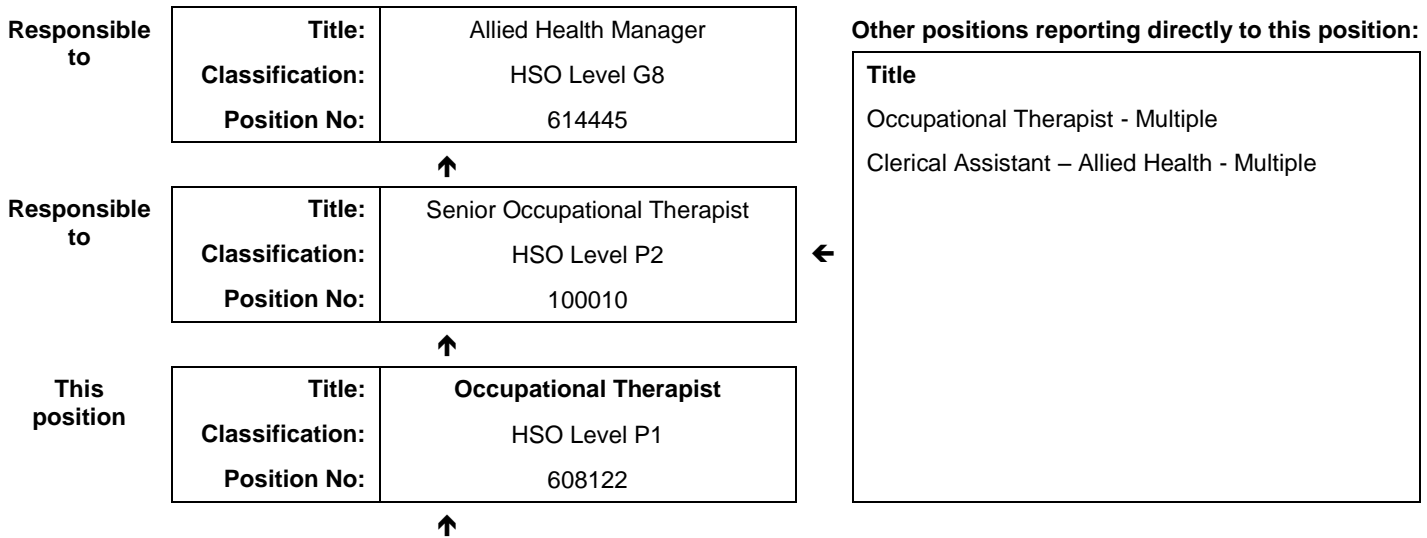


JOB DESCRIPTION FORM

Section 1 - POSITION IDENTIFICATION

		Position No:	608122
Division:	Kimberley	Title:	Occupational Therapist
Branch:	Kimberley Population Health Unit	Classification:	HSO Level P1
Section:	Allied Health - Kununurra	Award/Agreement:	Health Salaried Officers Agreement

Section 2 - POSITION RELATIONSHIPS



Positions under direct supervision:		← Other positions under control:	
Position No	Title	Category	Number

Section 3 - KEY RESPONSIBILITIES

In conjunction with the Senior Occupational Therapist plans, implements and evaluates timely and culturally appropriate Occupational Therapy services to clients, families and the communities of the East Kimberley region.

TITLE	Occupational Therapist	POSITION NO	608122
		CLASSIFICATION	HSO Level P1



The WA Country Health Service (WACHS) is the largest country health system in Australia and one of the biggest in the world, providing health services to over half a million people, including over 50,000 Aboriginal people, over a vast two and a half million square kilometres area.

WA Country Health Service hospitals handle almost as many births as the State's major maternity hospital – and 40% of the State's emergency presentations. The range of health services provided include acute inpatient and emergency care, population and public health, mental health, Aboriginal health, aged care and includes increasing number of services provided by telehealth video-conferencing.

Our dedicated and committed staff work hard to fulfil our vision of Healthier country communities through partnerships and innovation, to deliver health services that support the health and well-being of individuals and communities in rural and remote Western Australia.

OUR MISSION

To deliver and advance high quality care for country WA communities

OUR VISION

To be a global leader in rural and remote healthcare

OUR STRATEGIC PRIORITIES

Caring for our patients - Providing safe, patient-centred care, ensuring the needs of our patients are at the core of everything we do

Addressing disadvantage and inequity - Delivering focussed and accessible services for those who need it most

Building healthy, thriving communities - Supporting country people to be as healthy as they can be and continuing to play our part in the economic and social viability of country communities

Delivering value and sustainability - Ensuring that the services we provide are sustainable and we are transparent about our performance

Enabling our staff - Supporting our staff to deliver great care, empowering them to learn, grow, innovate and lead

Leading innovation and technology - Embracing innovation and technology to create a safer, more connected and equitable health system

Collaborating with our partners - Partnering to deliver more integrated services that improve patient outcomes and experience, giving consumers more choice and control

OUR VALUES

Community – We live and work in country communities. We are invested in the health, wellness and viability of country communities and the vibrancy, diversity and future of country WA.

Compassion – We are inclusive, respectful, and considerate. We care deeply about the people in our care and country communities.

Quality – We provide safe, high-quality care, constantly striving to innovate, improve and achieve trust in our care.

Integrity – We bring honesty, collaboration and professionalism to everything that we do.

Equity – We are passionate about fairness in healthcare for all Western Australians, especially the most vulnerable and disadvantaged people and communities.

Curiosity – We continually enquire and seek to understand, using the best evidence, insight and research to improve care.

WA Country Health Service – KIMBERLEY
07 February 2020
REGISTERED

TITLE	Occupational Therapist	POSITION NO	608122
		CLASSIFICATION	HSO Level P1

Section 4 - STATEMENT OF DUTIES

Duty No	Details	Freq	%
1	CLINICAL		70
1.1	Plans, implements and evaluates Occupational Therapy service within the region and designated communities.		
1.2	Screens, assesses, treats and evaluates clients within designated caseload.		
1.3	Participates in multidisciplinary team meetings and liaises with other professional staff and community agencies in coordination of clients / programs.		
1.4	Reports verbally and in writing to other team members and referring agencies as appropriate.		
1.5	Acts as a consultant to staff and other service providers as appropriate.		
1.6	Involved in the assessment and management of clients in remote communities.		
1.7	Participates in community projects and education programmes with approved organisations.		
1.8	Plans, implements and evaluates primary health care programs for towns and communities within catchment area.		
2	PROFESSIONAL		5
2.1	Initiates and participates in approved research and quality improvement programs.		
2.2	Supervises Allied Health Assistants and students as requested by the Senior Occupational Therapist.		
2.3	Actively reflects on Occupational Therapy practices and services to enhance evidence based practice and to inform primary health care service development.		
2.4	Participates in relevant peer and professional practice review including identification of ongoing professional development needs with the Senior Occupational Therapist.		
2.5	Promotes Occupational Therapy services and the profession to clients, within WACHS Kimberley and to the wider community.		
3	ADMINISTRATION		20
3.1	Maintains data entry and clinical information in accordance with organisational and professional requirements.		
3.2	Assists in the planning of service delivery.		
3.3	Initiate and participate in quality improvement programs.		
3.4	Updates departmental resources, policies, systems and equipment as required.		
4	OTHER		5
4.1	Provides services and utilises resources in accordance with staff and client safety, cost and environmental considerations and consistent with guidelines and best practice.		
4.2	Other duties as directed by line manager or their delegate.		

The occupant of this position will be expected to comply with and demonstrate a positive commitment to the WACHS values and the highest achievement in demonstrating positive commitment to Equal Employment Opportunity, Occupational Safety & Health, Public Sector Standards, Code of Conduct, Code of Ethics, Quality Improvement, Performance Management, Customer Focus, Disability Services Act and Confidentiality throughout the course of their duties.

WA Country Health Service – KIMBERLEY

07 February 2020

REGISTERED

TITLE	Occupational Therapist	POSITION NO	608122
		CLASSIFICATION	HSO Level P1

Section 5 - SELECTION CRITERIA

ESSENTIAL:

- 1 Tertiary qualification in Occupational Therapy and eligible for registration by the Occupational Therapy Board of Australia.
- 2 Demonstrated knowledge and experience of Occupational Therapy assessments and interventions for a generalist caseload including primary health care, outpatient, hand therapy and acute settings, across the lifespan.
- 3 Demonstrated understanding of cultural factors and social determinants particularly relating to Aboriginal health.
- 4 Proven effective time management, caseload management and organisational skills.
- 5 Proven effective interpersonal and verbal and written communication skills and ability to work as a member of a multidisciplinary team.
- 6 Ability to plan, develop and evaluate Occupational Therapy programs.
- 7 Current C Class drivers Licence and an ability and willingness to travel to including overnight stays away from home.
- 8 Current knowledge of legislative obligations for Equal Opportunity, Disability Services and Occupational Safety and Health, and how these affect employment and service delivery.

DESIRABLE:

- 1 Experience working in a rural and/or remote setting.
- 2 Commitment to professional development and quality improvement.

Section 6 - APPOINTMENT FACTORS

Location	Kununurra	Accommodation	As per WACHS Kimberley policy
Appointment/ Allowances Conditions	Where applicable - District Allowance, Annual Leave Travel Concession, one week additional Annual leave for above the 26 th parallel, air conditioning subsidy. Appointment is subject to: <ul style="list-style-type: none"> • Evidence of current registration by the Occupational Therapy Board of Australia must be provided prior to commencement. • Provision of the minimum identity proofing requirements • Successful Criminal Record Screening clearance • Successful Pre-Employment Health Assessment • Successful WA Health Integrity Check • Successful Working With Children Check • Evidence of a current C or C-A class driver's licence and ability to travel within the region to remote locations by 4WD and/or light aircraft as required including overnight stays 		
Specialised equipment operated			

Section 7 - CERTIFICATION

The details contained in this document are an accurate statement of the duties, responsibilities and other requirements of the position.

Signature and Date: ____/____/____

**Director
Kimberley Population Health Unit**

Signature and Date: ____/____/____

**Regional Director
WACHS Kimberley**

As occupant of the position I have noted the statement of duties, responsibilities and other requirements as detailed in this document.

Name	Signature	Date Appointed	Date Signed

