

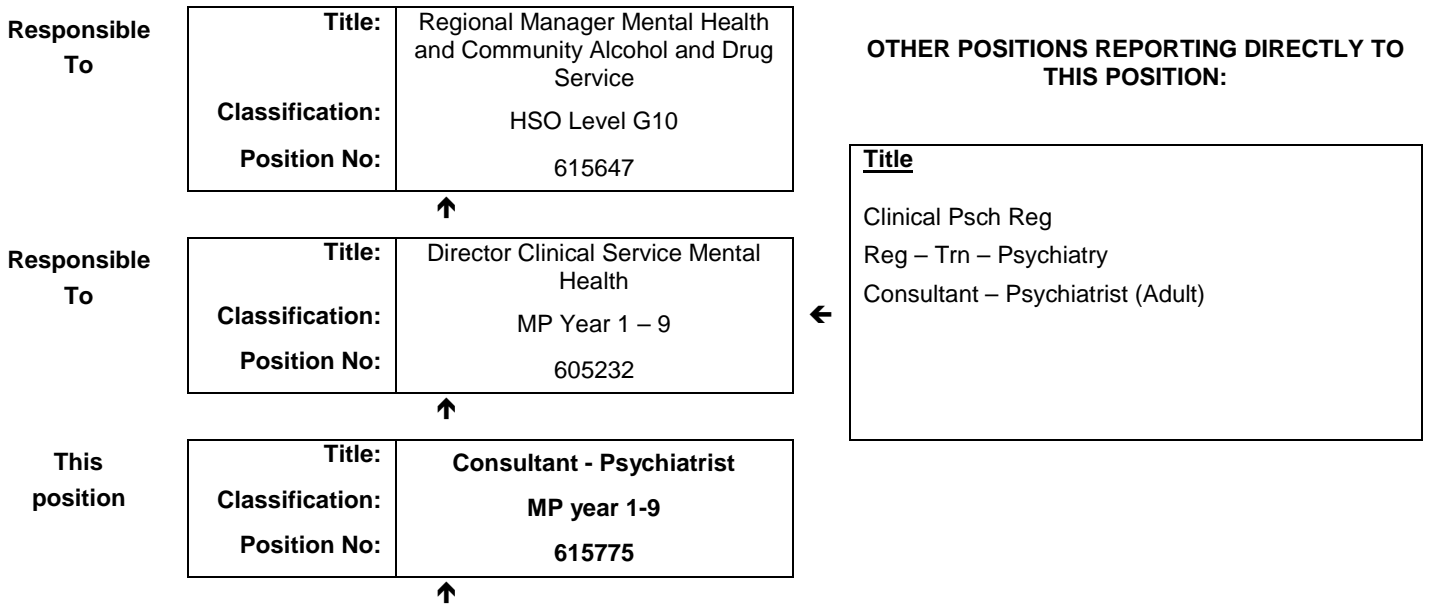


JOB DESCRIPTION FORM

Section 1 – POSITION IDENTIFICATION

WA Country Health Service – Midwest		Position No:	615775
Division:	Midwest Mental Health & Community Alcohol and Drug Service	Title:	Consultant - Psychiatrist
Branch:	Mental Health	Classification:	MP year 1-9
Section:	Child & Adolescent	Award/Agreement	Medical Practitioners Agreement

Section 2 – POSITION RELATIONSHIPS



Positions under direct supervision:	← Other positions under control:								
<table border="1"> <thead> <tr> <th>Position No.</th> <th>Title</th> </tr> </thead> <tbody> <tr> <td> </td> <td> </td> </tr> </tbody> </table>	Position No.	Title			<table border="1"> <thead> <tr> <th>Category</th> <th>Number</th> </tr> </thead> <tbody> <tr> <td> </td> <td> </td> </tr> </tbody> </table>	Category	Number		
Position No.	Title								
Category	Number								

Section 3 – KEY RESPONSIBILITIES

Provide clinical leadership, advice, consultation, liaison and support to health care professionals, other providers and agencies, and to carers and consumers throughout the Midwest Mental Health Service region. Examines, assesses, diagnoses and treats child and adolescent patients referred to the Midwest MH&CADS. Promote the organisational culture and principles of person-centred, trauma informed and recovery focussed service delivery.

WA Country Health Service
Midwest

16 January 2020

REGISTERED

TITLE	Consultant - Psychiatrist	POSITION NO	615775
		CLASSIFICATION	MP year 1-9



The WA Country Health Service (WACHS) is the largest country health system in Australia and one of the biggest in the world, providing health services to over half a million people, including over 50,000 Aboriginal people, over a vast two and a half million square kilometres area.

WA Country Health Service hospitals handle almost as many births as the State's major maternity hospital – and 40% of the State's emergency presentations. The range of health services provided include acute inpatient and emergency care, population and public health, mental health, Aboriginal health, aged care and includes increasing number of services provided by telehealth video-conferencing.

Our dedicated and committed staff work hard to fulfil our vision of Healthier country communities through partnerships and innovation, to deliver health services that support the health and well-being of individuals and communities in rural and remote Western Australia.

OUR MISSION

To deliver and advance high quality care for country WA communities

OUR VISION

To be a global leader in rural and remote healthcare

OUR STRATEGIC PRIORITIES

Caring for our patients - Providing safe, patient-centred care, ensuring the needs of our patients are at the core of everything we do

Addressing disadvantage and inequity - Delivering focussed and accessible services for those who need it most

Building healthy, thriving communities - Supporting country people to be as healthy as they can be and continuing to play our part in the economic and social viability of country communities

Delivering value and sustainability - Ensuring that the services we provide are sustainable and we are transparent about our performance

Enabling our staff - Supporting our staff to deliver great care, empowering them to learn, grow, innovate and lead

Leading innovation and technology - Embracing innovation and technology to create a safer, more connected and equitable health system

Collaborating with our partners - Partnering to deliver more integrated services that improve patient outcomes and experience, giving consumers more choice and control

OUR VALUES

Community – We live and work in country communities. We are invested in the health, wellness and viability of country communities and the vibrancy, diversity and future of country WA.

Compassion – We are inclusive, respectful, and considerate. We care deeply about the people in our care and country communities.

Quality – We provide safe, high-quality care, constantly striving to innovate, improve and achieve trust in our care.

Integrity – We bring honesty, collaboration and professionalism to everything that we do.

Equity – We are passionate about fairness in healthcare for all Western Australians, especially the most vulnerable and disadvantaged people and communities.

Curiosity – We continually enquire and seek to understand, using the best evidence, insight and research to

<p>WA Country Health Service Midwest</p> <p>16 January 2020</p> <p>REGISTERED</p>

TITLE	Consultant - Psychiatrist	POSITION NO	615775
		CLASSIFICATION	MP year 1-9

Section 4 – STATEMENT OF DUTIES

Duty No.	Details	Freq.	%
1.0	CLINICAL and LIAISON		
1.1	Provide clinical advice, consultation, liaison and support to health care professionals, other providers and agencies, and to carers and consumers throughout the Midwest Health Service region.		
1.2	Examine, assess, diagnose and treat child and adolescent patients referred to the Midwest MH&CADS and support nurses, health workers and carers in the provision of mental health care.		
1.3	Work in accordance with the WA Mental Health Act 2014 including the Chief Psychiatrists Standards and the Charter of MH Care Principles.		
1.4	Provide assessment, review, consultation and support in clinical matters via outreach and video conferencing across the Midwest region.		
1.5	Contribute to the development of mental health services that are responsive to community needs and priorities by participating in planning, implementation and evaluation processes.		
1.6	Maintain up to date client records and statistical data as required.		
1.7	Maintain close liaison with the primary health sector, Aboriginal Medical Services and other providers and consumer organisations.		
1.8	Participate in relevant multi-disciplinary team meetings.		
2.0	SAFETY AND QUALITY		
2.1	Participates in continuous safety and quality improvement activities including regular morbidity/mortality reviews, peer review, clinical incident reporting investigations and development and monitoring of quality assurance measures and activities.		
2.2	Attends to medico legal issues that arise concerning child and adolescent patients that have been under their care and advises the Clinical Director about complaints they receive pertaining to themselves or other doctors.		
3.0	EDUCATION & TEACHING		
3.1	Support and promote connections with other mental health services and academic units.		
3.2	Provide education for and supervise registrars and medical students.		
3.3	Participate in training programs for health care providers and community groups.		
3.4	Participate in professional development activities that are relevant to the operation of the Mental Health Service and will contribute to positive consumer outcomes.		
3.5	Substantially contribute to and promotes the clinical teaching of staff and other health care providers, to ensure the continuing excellence of members of the Midwest MH&CADS.		
3.6	Works within their clinical scope of practice and participate in an annual professional development review of their performance.		
4.0	OTHER		
4.1	Other duties are required or directed.		

The occupant of this position will be expected to comply with and demonstrate a positive commitment to the WACHS values and the highest achievement in demonstrating positive commitment to Equal Employment Opportunity, Occupational Safety & Health, Public Sector Standards, Code of Conduct, Code of Ethics, Quality Improvement, Performance Management, Customer Focus, Disability Services Act and Confidentiality throughout the course of their duties.

**WA Country Health Service
Midwest**

16 January 2020

REGISTERED

TITLE	Consultant - Psychiatrist	POSITION NO	615775
		CLASSIFICATION	MP year 1-9

Section 5 – SELECTION CRITERIA

ESSENTIAL

1. Eligible for registration by the Medical Board of Australia
2. Fellowship of the Australian and New Zealand College of Psychiatrists (or equivalent).
3. Demonstrated knowledge and clinical experience and skills in the practice of child and adolescent psychiatry and associated diagnostic and contemporary therapeutic procedures.
4. Demonstrated high level skills in all aspects of the CanMEDS competency framework.
5. Well-developed conceptual, analytical and evaluations skills, including commitment to working with a coordinated multidisciplinary team to support ongoing clinical service redesign and improve systems of care provision.
6. Demonstrated high level interpersonal, negotiation and conflict resolution skills and an ability to liaise effectively consumers, carers and clinicians.
7. Eligible for / or in possession of a current C or C-A Class drivers licence.

DESIRABLE

1. Post-fellowship subspecialisation, education, teaching, research or quality improvement training/qualifications.
2. Demonstrated effective personal computing, data collection and analysis skills.
3. Experience in the use of video conferencing
4. Current knowledge and commitment to Equal Opportunity in all aspects of employment and service delivery.

Section 6 – APPOINTMENT FACTORS

Location	Geraldton	Accommodation	As determined by the WA Country Health Service Policy
Allowances/ Appointment Conditions	Appointment is subject to: <ul style="list-style-type: none"> • Evidence of registration by the Medical Board of Australia must be provided prior to commencement. • Provision of the minimum identity proofing requirements • Successful Criminal Record Screening clearance • Successful Pre-Employment Health Assessment • Successful WA Health Integrity Check • Successful Working With Children Check • Evidence of a current C or C-A Class drivers licence Allowances <ul style="list-style-type: none"> • District allowance; 		
Specialised equipment operated			

Section 7 – CERTIFICATION

The details contained in this document are an accurate statement of the duties, responsibilities and other requirements of the position.

Signature and Date: Manager	WA Country Health Service Midwest 16 January 2020 REGISTERED	Signature and Date: Regional Director	WA Country Health Service Midwest 16 January 2020 REGISTERED

As occupant of the position I have noted the statement of duties, responsibilities and other requirements as detailed in this document.

Name	Signature	Date Appointed	Date Signed

WA Country Health Service Midwest 16 January 2020 REGISTERED
