

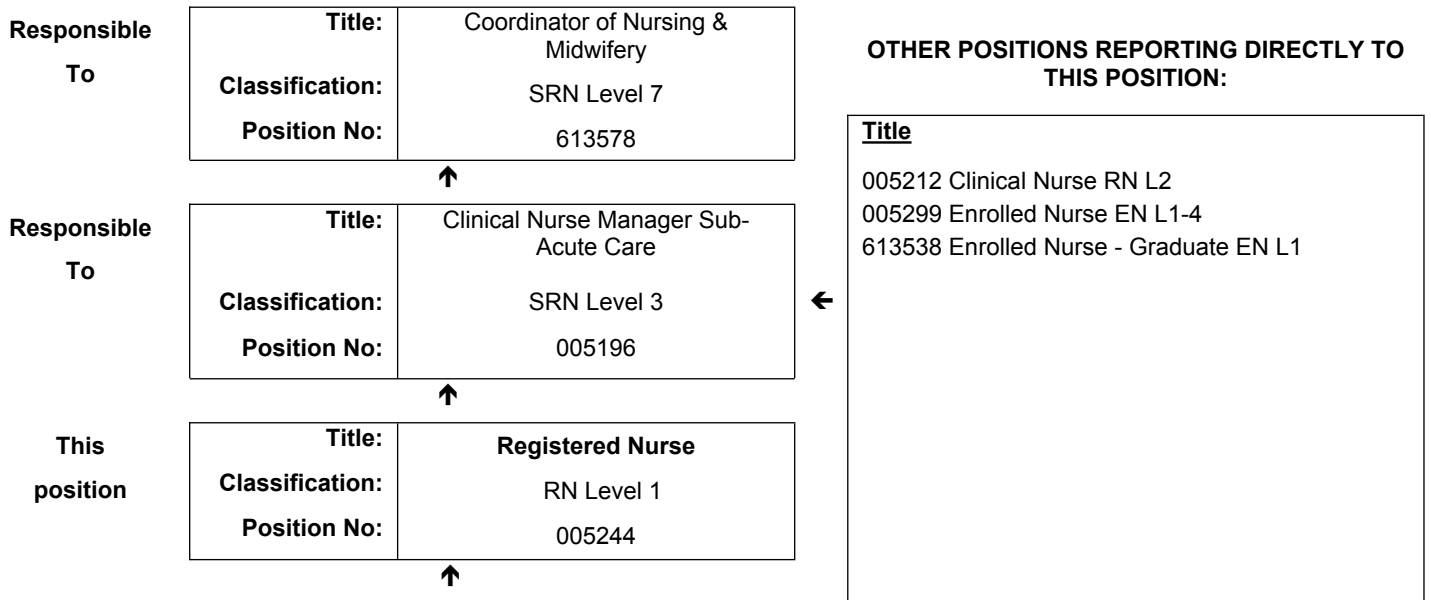


JOB DESCRIPTION FORM

Section 1 – POSITION IDENTIFICATION

GREAT SOUTHERN		Position No:	005244
Division:	Albany Health Campus	Title:	Registered Nurse
Branch:	Nursing & Midwifery	Classification:	RN Level 1
Section:	Rehabilitation	Award/Agreement	Nurses and Midwives Agreement

Section 2 – POSITION RELATIONSHIPS



Positions under direct supervision:	← Other positions under control:								
<table style="width: 100%; border-collapse: collapse;"> <thead> <tr> <th style="width: 30%;">Position No.</th> <th style="width: 70%;">Title</th> </tr> </thead> <tbody> <tr> <td style="text-align: center;">Nil</td> <td></td> </tr> </tbody> </table>	Position No.	Title	Nil		<table style="width: 100%; border-collapse: collapse;"> <thead> <tr> <th style="width: 70%;">Category</th> <th style="width: 30%;">Number</th> </tr> </thead> <tbody> <tr> <td> </td> <td> </td> </tr> </tbody> </table>	Category	Number		
Position No.	Title								
Nil									
Category	Number								

Section 3 – KEY RESPONSIBILITIES

Responsible for the provision of high quality patient-centred nursing care; acts as a resource for all staff in the provision of nursing care and problem solving; provides professional support to the Clinical Nurse Manager and colleagues.

**WA Country Health Service –
Great Southern**

03 December 2019

REGISTERED

TITLE	Registered Nurse	POSITION NO	005244
		CLASSIFICATION	RN Level 1



The WA Country Health Service (WACHS) is the largest country health system in Australia and one of the biggest in the world, providing health services to over half a million people, including over 50,000 Aboriginal people, over a vast two and a half million square kilometres area.

WA Country Health Service hospitals handle almost as many births as the State's major maternity hospital – and 40% of the State's emergency presentations. The range of health services provided include acute inpatient and emergency care, population and public health, mental health, Aboriginal health, aged care and includes increasing number of services provided by telehealth video-conferencing.

Our dedicated and committed staff work hard to fulfil our vision of Healthier country communities through partnerships and innovation, to deliver health services that support the health and well-being of individuals and communities in rural and remote Western Australia.

OUR MISSION

To deliver and advance high quality care for country WA communities

OUR VISION

To be a global leader in rural and remote healthcare

OUR STRATEGIC PRIORITIES

Caring for our patients - Providing safe, patient-centred care, ensuring the needs of our patients are at the core of everything we do

Addressing disadvantage and inequity - Delivering focussed and accessible services for those who need it most

Building healthy, thriving communities - Supporting country people to be as healthy as they can be and continuing to play our part in the economic and social viability of country communities

Delivering value and sustainability - Ensuring that the services we provide are sustainable and we are transparent about our performance

Enabling our staff - Supporting our staff to deliver great care, empowering them to learn, grow, innovate and lead

Leading innovation and technology - Embracing innovation and technology to create a safer, more connected and equitable health system

Collaborating with our partners - Partnering to deliver more integrated services that improve patient outcomes and experience, giving consumers more choice and control

OUR VALUES

Community – We live and work in country communities. We are invested in the health, wellness and viability of country communities and the vibrancy, diversity and future of country WA.

Compassion – We are inclusive, respectful, and considerate. We care deeply about the people in our care and country communities.

Quality – We provide safe, high-quality care, constantly striving to innovate, improve and achieve trust in our care.

Integrity – We bring honesty, collaboration and professionalism to everything that we do.

Equity – We are passionate about fairness in healthcare for all Western Australians, especially the most vulnerable and disadvantaged people and communities.

Curiosity – We continually enquire and seek to understand, using the best evidence, insight and research to improve care.

**WA Country Health Service –
Great Southern**

03 December 2019

REGISTERED

TITLE	Registered Nurse	POSITION NO	005244
		CLASSIFICATION	RN Level 1

Section 4 – STATEMENT OF DUTIES

Duty No.	Details	Freq.	%
	<p>The Registered Nurse will:</p> <ol style="list-style-type: none"> 1. Maintain their competence to practice in accordance with national competency standards for the Registered Nurse as described by the Nursing & Midwifery Board of Australia. 2. Be responsible for the assessment, planning, implementation, facilitation and evaluation of the delivery of patient care. 3. Coordinate multidisciplinary services to ensure a high standard of health care delivery. 4. Identify patient education needs and implement appropriate teaching, including coordination of patient education programs. 5. Plan and facilitate nursing activities and performs role of shift coordinator as required. 6. Actively participate in improvement and research programs in conjunction with others to improve the unit or hospital health care service. 7. Participate in unit based decision-making and supports the achievement of unit, hospital, regional and WA Country Health Service objectives. 8. Plan, undertake and report on allocated audits, including assisting the Clinical Nurse Manager to develop quality improvement plans. 9. Identify learning needs through critical reflection and engage in ongoing development of self as a professional. 10. Contribute to and support the professional development of others by participating in unit based education activities, preceptorship and Orientation. 11. Be accountable for the safe, efficient and effective use of resources, including assisting with forward planning for the unit. <p>Other duties as requested by the line manager.</p>		100

The occupant of this position will be expected to comply with and demonstrate a positive commitment to the highest achievement level in Equal Employment Opportunity, Occupational Safety & Health, Public Sector Standards, Code of Conduct, Code of Ethics, Quality Improvement, Performance Management, Customer Focus, Disability Services Act and Confidentiality throughout the course of their duties.

**WA Country Health Service –
Great Southern**

03 December 2019

REGISTERED

TITLE	Registered Nurse	POSITION NO	005244
		CLASSIFICATION	RN Level 1

Section 5 – SELECTION CRITERIA

ESSENTIAL

1. Eligible for registration in the category of Registered Nurse by the Nursing and Midwifery Board of Australia
2. Demonstrated sound clinical knowledge and experience in the delivery of evidence based nursing care, incorporating quality and risk management within the rehabilitation nursing setting
3. Demonstrated ability to function as a team leader and team member
4. Demonstrated effective communication (written and verbal) and interpersonal skills, including clinical handover and escalation communication skills
5. Demonstrated computing skills to enable navigation of online policy access, internal communication and completing online learning resources

DESIRABLE

1. Possession of or progression towards an appropriate post-graduate qualification
2. Knowledge of current health issues and the organisational culture of rural health services
3. Current knowledge of legislative obligations for Equal Opportunity, Disability Services and Occupational Safety and Health, and how these impact on employment and service delivery

Section 6 – APPOINTMENT FACTORS

Location	Albany	Accommodation	Nil
Allowances/ Appointment Conditions	Appointment is subject to: <ul style="list-style-type: none"> • Evidence of current registration by the Nursing and Midwifery Board Australia must be provided prior to commencement • Provision of the minimum identity proofing requirements. • Successful Criminal Record Screening clearance • Successful Pre-Employment Health Assessment • Successful WA Health Integrity Check • Successful Working With Children Check 		
Specialised equipment operated	Health Information Systems including but not limited to: Webpas,iCM, Rostar, Datix Clinical Incident and Customer Feedback modules, Learning Management System (LMS), Telehealth, Videoconferencing, Oracle and Microsoft Office. Clinical equipment including, but not limited to IV pumps, point of care testing devices, bladder scanning, 12-lead ECG, non-invasive haemodynamic monitoring, patient lifting devices.		

Section 7 – CERTIFICATION

The details contained in this document are an accurate statement of the duties, responsibilities and other requirements of the position.

Signature and Date: ____/____/____
Manager

Signature and Date: ____/____/____
Regional Director

As occupant of the position I have noted the statement of duties, responsibilities and other requirements as detailed in this document.

Name	Signature	Date Appointed	Date Signed

**WA Country Health Service –
Great Southern**

03 December 2019

REGISTERED