

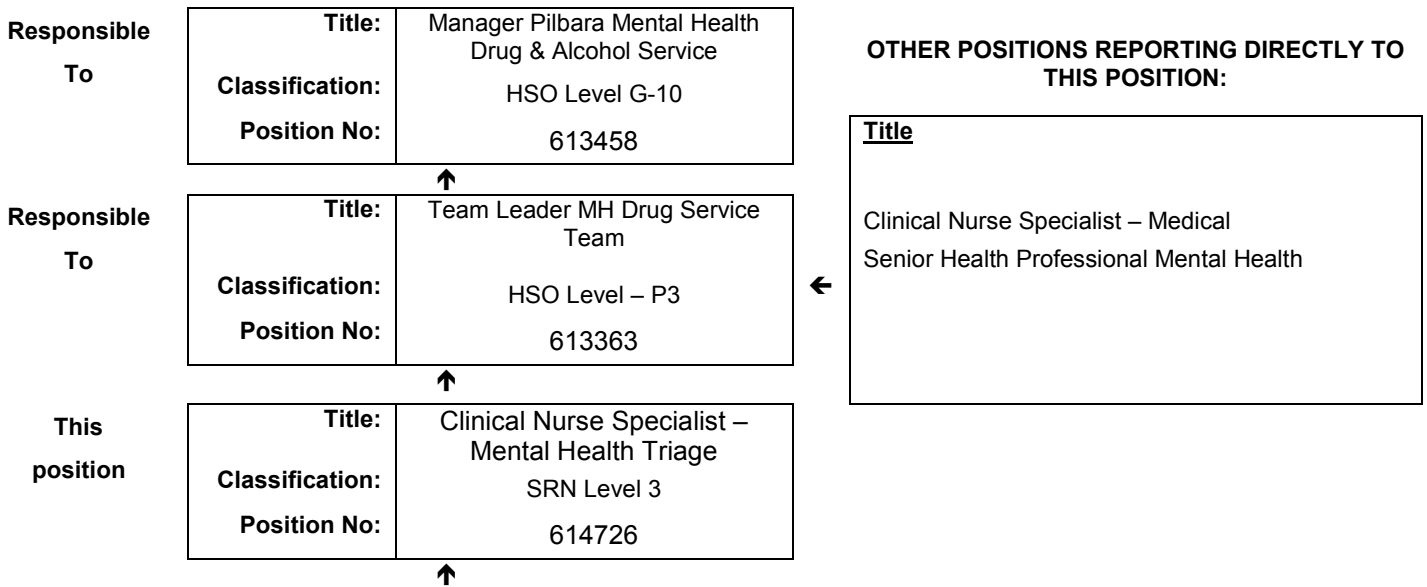


JOB DESCRIPTION FORM

Section 1 – POSITION IDENTIFICATION

WA Country Health Service		Position No:	614726
Division:	Pilbara	Title:	Clinical Nurse Specialist – Mental Health Triage
Branch:	Pilbara Mental Health and Drug Service	Classification:	SRN Level 3
Section:	Hedland Health Campus	Award/Agreement	Nurses and Midwives Agreement

Section 2 – POSITION RELATIONSHIPS



Positions under direct supervision:	← Other positions under control:				
<table style="width: 100%; border-collapse: collapse;"> <tr> <td style="width: 50%; text-align: center;">Position No.</td> <td style="width: 50%; text-align: center;">Title</td> </tr> </table>	Position No.	Title	<table style="width: 100%; border-collapse: collapse;"> <tr> <td style="width: 50%; text-align: center;">Category</td> <td style="width: 50%; text-align: center;">Number</td> </tr> </table>	Category	Number
Position No.	Title				
Category	Number				

Section 3 – KEY RESPONSIBILITIES

Responds to all contracts made to Pilbara Mental Health and Drug service eastern region, identifies the nature and appropriateness of referrals, sets priorities for management, collates information for presentation at intake meetings, and coordinates emergency responses within the region. Liaison with Government and non-government service providers to coordinate the provision of mental health services to clients and provide educational support to those agencies Undertakes senior level projects represents the service and provides consultation at the state level as required. Undertakes analysis of clinical interventions and identifies trends within programs and reports appropriately.

TITLE	Clinical Nurse Specialist – Mental Health Triage	POSITION NO	614726
		CLASSIFICATION	SRN Level 3



The WA Country Health Service (WACHS) is the largest country health system in Australia and one of the biggest in the world, providing health services to over half a million people, including over 50,000 Aboriginal people, over a vast two and a half million square kilometres area.

WA Country Health Service hospitals handle almost as many births as the State's major maternity hospital – and 40% of the State's emergency presentations. The range of health services provided include acute inpatient and emergency care, population and public health, mental health, Aboriginal health, aged care and includes increasing number of services provided by telehealth video-conferencing.

Our dedicated and committed staff work hard to fulfil our vision of Healthier country communities through partnerships and innovation, to deliver health services that support the health and well-being of individuals and communities in rural and remote Western Australia.

OUR MISSION

To deliver and advance high quality care for country WA communities

OUR VISION

To be a global leader in rural and remote healthcare

OUR STRATEGIC PRIORITIES

Caring for our patients - Providing safe, patient-centred care, ensuring the needs of our patients are at the core of everything we do

Addressing disadvantage and inequity - Delivering focussed and accessible services for those who need it most

Building healthy, thriving communities - Supporting country people to be as healthy as they can be and continuing to play our part in the economic and social viability of country communities

Delivering value and sustainability - Ensuring that the services we provide are sustainable and we are transparent about our performance

Enabling our staff - Supporting our staff to deliver great care, empowering them to learn, grow, innovate and lead

Leading innovation and technology - Embracing innovation and technology to create a safer, more connected and equitable health system

Collaborating with our partners - Partnering to deliver more integrated services that improve patient outcomes and experience, giving consumers more choice and control

OUR VALUES

Community – We live and work in country communities. We are invested in the health, wellness and viability of country communities and the vibrancy, diversity and future of country WA.

Compassion – We are inclusive, respectful, and considerate. We care deeply about the people in our care and country communities.

Quality – We provide safe, high-quality care, constantly striving to innovate, improve and achieve trust in our care.

Integrity – We bring honesty, collaboration and professionalism to everything that we do.

Equity – We are passionate about fairness in healthcare for all Western Australians, especially the most vulnerable and disadvantaged people and communities.

Curiosity – We continually enquire and seek to understand, using the best evidence, insight and research to improve care.

TITLE	Clinical Nurse Specialist – Mental Health Triage	POSITION NO	614726
		CLASSIFICATION	SRN Level 3

Section 4 – STATEMENT OF DUTIES

Duty No.	Details	Freq.	%
1.0	TRIAGE/CLINICAL		80
1.1	Triage of contacts made to Pilbara Mental Health and Drug Service, assessment to determine priority of need, appropriateness of referral and proper place of treatment.		
1.2	Undertakes risk assessment of all referrals and initial management of critical situations.		
1.3	Co-ordinates regional responses of urgent referrals and instigates response in conjunction with appropriate team members.		
1.4	Liases, supports and consults with general practitioners, government and non-government agencies to provide advice and support relating to managing clients with mental health problems.		
1.5	Co-ordinates intake meetings for all programs throughout the region.		
1.6	Co-ordinates and manages PSOLIS system ensuring reporting data accurate.		
1.7	Monitors client's outcomes and reports on a regular basis to the team leaders.		
1.8	Undertakes analysis of clinical interventions and identifies trends within programs and reports appropriately.		
1.9	Provision of authorised mental health practitioner services within the region.		
1.10	Acts as a case manager for cases allocated.		
1.11	Provides assessment and treatment for persons allocated and their carers using a range of appropriate interventions.		
1.12	Participates in mental health team meetings and intersectorial case conferences.		
1.13	Maintains client case notes meeting legal requirements.		
1.14	Assists in the establishment and maintenance of effective intersectorial relationships.		
1.15	Provision of client support when case managers are unavailable.		
1.16	Provides debriefing and support to staff and other agencies following complex or critical incidents.		
1.17	Provides clinical services to the Child and Adolescent program as required within competency level.		10
2.0	EDUCATION		
2.1	Participates in a range of educational mental health promotion activities.		
2.2	Development and maintenance of an up to date regional resource directory.		
2.3	Delivery of psychiatric emergency management education packages to stakeholder agencies.		
3.0	MANAGEMENT AND ADMINISTRATION		5
3.1	Collects statistical data in accordance with the Pilbara Mental Health and Drug Service requirements.		
3.2	Complies with legislation affecting clinical practice, OH&S, EEO and Mental Health Act 1996.		
3.3	Ensures effective use of resources allocated to the position.		
3.4	Active membership of the PSOLIS advisory Committee.		
3.5	Provision of clinical supervision to subordinate staff and preceptor for student and post graduate nurses.		
3.6	Undertakes senior level projects delegated.		
3.7	Represents the service and provides consultation at the state level as required.		
3.8	Advises the Manager and Program Co-ordinators on matters relating to nursing.		
3.9	Participates in the planning and operation of the service.		
3.10	Coordinates the development, implementation and monitoring of quality and risk management systems for the triage program in alignment with WACHS systems.		
4.0	OTHER		5
4.1	Other duties as directed by the Team Leader.		

The occupant of this position will be expected to comply with and demonstrate a positive commitment to the WACHS values and the highest achievement in demonstrating positive commitment to Equal Employment Opportunity, Occupational Safety & Health, Public Sector Standards, Code of Conduct, Code of Ethics, Quality Improvement, Performance Management, Customer Focus, Disability Services Act and Confidentiality throughout the course of their duties.

TITLE	Clinical Nurse Specialist – Mental Health Triage	POSITION NO	614726
		CLASSIFICATION	SRN Level 3

Section 5 – SELECTION CRITERIA

ESSENTIAL

1. Eligible for registration in the category of Registered Nurse by the Nursing and Midwifery Board of Australia.
2. Extensive experience as a Community Mental Health Nurse with demonstrated expert level skills in crisis intervention, assessment, treatment and case management of adults and seniors with complex mental disorders.
3. Working knowledge of Child and Adolescent, Adult and Seniors Mental Health service delivery systems.
4. Demonstrated ability to work effectively and efficiently in a multidisciplinary team and ability to work as an independent practitioner.
5. Advanced knowledge and ability to initiate and manage interventions under the Mental Health Act 1996.
6. Demonstrated skills in applying the National Standards for Mental Health Services at the organisational level and in clinical practice.
7. Demonstrated clinical leadership skills including skills in providing clinical supervision, line management and performance development with supervised staff.
8. Current C Class drivers licence with the ability and willingness to travel within the region with possible overnight stays.

DESIRABLE

1. Current knowledge and commitment to Equal Opportunity, OS&H in all aspects of employment and service delivery.
2. Experience in rural/remote and trans-cultural (especially Aboriginal) mental health service provision with a focus on community development.
3. Knowledge of organisational and clinical risk management principles.

Section 6 – APPOINTMENT FACTORS

Location	South Hedland	Accommodation	As per WACHS Accommodation Policy
Allowances/ Appointment Conditions	District Allowance if applicable, Annual Leave Travel Concession if applicable, one week additional leave for above the 26 th Parallel, Air-conditioning subsidy if applicable Appointment is subject to: <ul style="list-style-type: none"> • Evidence of current registration by the Nursing and Midwifery Board of Australia must be provided prior to commencement. • Provision of the minimum identity proofing requirements. • Successful Criminal Record Screening clearance • Successful Pre-Employment Health Assessment • Successful WA Health Integrity Check • Successful Working With Children Check • Evidence of a current C or C-A class driver's licence and ability to travel within the region as required including overnight stays. 		

Section 7 – CERTIFICATION

The details contained in this document are an accurate statement of the duties, responsibilities and other requirements of the position.



Signature and Date:
Manager Pilbara MH Drug & Alcohol

As occupant of the position I have noted the statement of duties, responsibilities and other requirements as detailed in this document.

Name	Signature	Date Appointed	Date Signed