

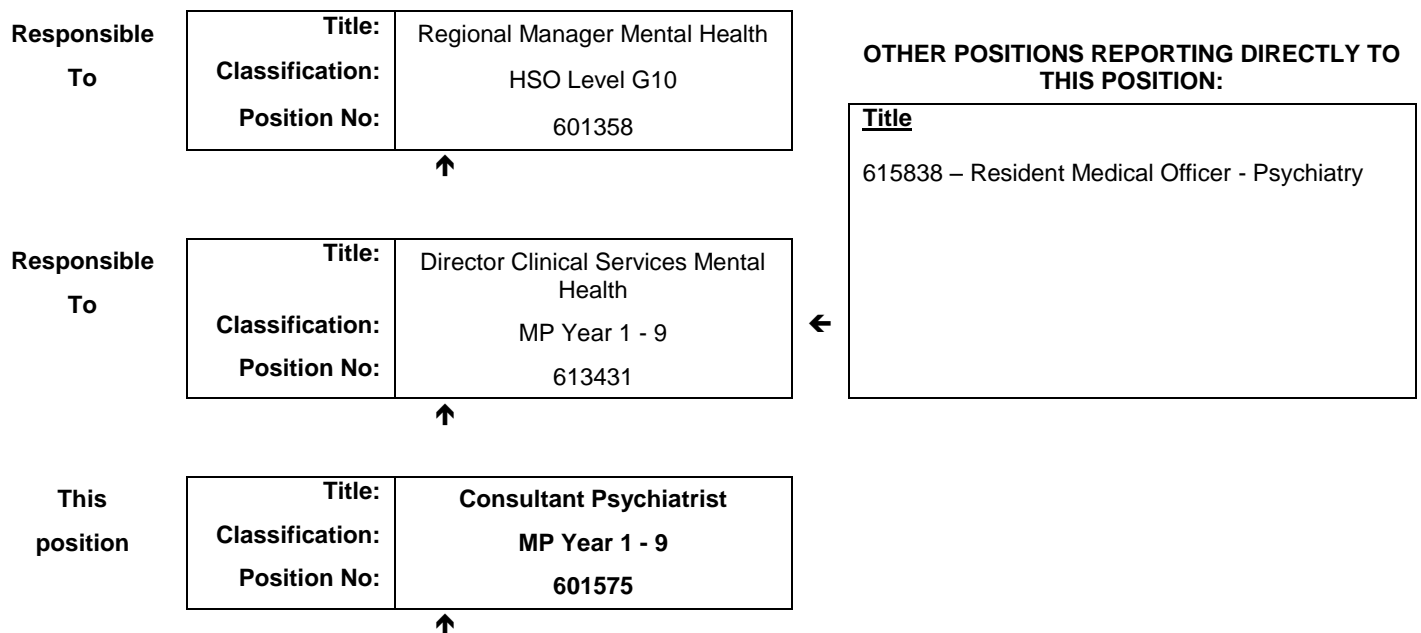


JOB DESCRIPTION FORM

Section 1 – POSITION IDENTIFICATION

Goldfields		Position No:	601575
Division:	Mental Health	Title:	Consultant Psychiatrist
Branch:	Regional	Classification:	MP Year 1 - 9
Section:	Inpatient Unit & Community Mental Health	Award/Agreement	Medical Practitioners Agreement

Section 2 – POSITION RELATIONSHIPS



Positions under direct supervision:	← Other positions under control:				
<table style="width: 100%; border-collapse: collapse;"> <tr> <td style="width: 50%; text-align: center;">Position No.</td> <td style="width: 50%; text-align: center;">Title</td> </tr> </table>	Position No.	Title	<table style="width: 100%; border-collapse: collapse;"> <tr> <td style="width: 70%; text-align: center;">Category</td> <td style="width: 30%; text-align: center;">Number</td> </tr> </table>	Category	Number
Position No.	Title				
Category	Number				

Section 3 – KEY RESPONSIBILITIES

Responsible for the provision of clinical assessment and psychiatric treatment for adults in the Goldfields region, the Mental Health Inpatient Unit, and Community mental health settings. Responsible for the clinical management of adult patients of the Goldfields Mental Health Service as a member of the multidisciplinary team. Provides clinical leadership, advice, consultation, liaison and support to health care professionals, other providers and care agencies, and to consumers and carers throughout the Goldfields Mental Health Service Region. Examines, assesses, diagnoses and treats both community based clients and inpatients within the Goldfields Mental Health Service region, as required in agreement with the Clinical Director and Regional Manager Mental Health.

**WA Country Health Service –
 GOLDFIELDS**

6 September 2019

**REGISTERED
 Job Description Form**

TITLE	Consultant Psychiatrist	POSITION NO	601575
		CLASSIFICATION	MP Year 1 - 9



The WA Country Health Service (WACHS) is the largest country health system in Australia and one of the biggest in the world, providing health services to over half a million people, including over 50,000 Aboriginal people, over a vast two and a half million square kilometres area.

WA Country Health Service hospitals handle almost as many births as the State's major maternity hospital – and 40% of the State's emergency presentations. The range of health services provided include acute inpatient and emergency care, population and public health, mental health, Aboriginal health, aged care and includes increasing number of services provided by telehealth video-conferencing.

Our dedicated and committed staff work hard to fulfil our vision of Healthier country communities through partnerships and innovation, to deliver health services that support the health and well-being of individuals and communities in rural and remote Western Australia.

OUR MISSION

To deliver and advance high quality care for country WA communities

OUR VISION

To be a global leader in rural and remote healthcare

OUR STRATEGIC PRIORITIES

Caring for our patients - Providing safe, patient-centred care, ensuring the needs of our patients are at the core of everything we do

Addressing disadvantage and inequity - Delivering focussed and accessible services for those who need it most

Building healthy, thriving communities - Supporting country people to be as healthy as they can be and continuing to play our part in the economic and social viability of country communities

Delivering value and sustainability - Ensuring that the services we provide are sustainable and we are transparent about our performance

Enabling our staff - Supporting our staff to deliver great care, empowering them to learn, grow, innovate and lead

Leading innovation and technology - Embracing innovation and technology to create a safer, more connected and equitable health system

Collaborating with our partners - Partnering to deliver more integrated services that improve patient outcomes and experience, giving consumers more choice and control

OUR VALUES

Community – We live and work in country communities. We are invested in the health, wellness and viability of country communities and the vibrancy, diversity and future of country WA.

Compassion – We are inclusive, respectful, and considerate. We care deeply about the people in our care and country communities.

Quality – We provide safe, high-quality care, constantly striving to innovate, improve and achieve trust in our care.

Integrity – We bring honesty, collaboration and professionalism to everything that we do.

Equity – We are passionate about fairness in healthcare for all Western Australians, especially the most vulnerable and disadvantaged people and communities.

Curiosity – We continually enquire and seek to understand, using the best evidence, insight and research to improve care.

<p>WA Country Health Service – GOLDFIELDS</p> <p>6 September 2019</p> <p>REGISTERED Job Description Form</p>
--

TITLE	Consultant Psychiatrist	POSITION NO	601575
		CLASSIFICATION	MP Year 1 - 9

Section 4 – STATEMENT OF DUTIES

Duty No.	Details	Freq.	%
1.0	PROFESSIONAL/CLINICAL		60
1.1	Undertakes comprehensive psychiatric assessment, diagnosis, treatment and supports case management of community based clients and inpatients within the Goldfields, including videoconferencing.		
1.2	Provides psychiatric care and general treatment in both inpatient and mental health community facilities of the Goldfields region.		
1.3	Develops formal links with and liaise with primary health care service providers, particularly including General Practitioners, to promote continuity of treatment, shared care management and ongoing education in the management of psychiatric disorders and other allied health service providers on clinical matters, treatment programs.		
1.4	Provide clinical leadership, advice, consultation, liaison and support to health care professionals, other providers and agencies, and to carers and consumers.		
1.5	Assume clinical responsibility for the practice and standards of all key workers case management/treatment plans.		
1.6	Participate in relevant multidisciplinary team meetings.		
1.7	Adhere to the Mental Health Act and Regulations.		
1.8	Act as a role model for registrars and supervise medical students during their placement		
1.9	Initiate and promote shared care treatment and management of patients with their respective GPs.		
1.10	Participates in after hours and weekend on call roster		
1.11	Participates and provides psychiatric crisis/emergency service as required including available/rostered after hours and weekend service.		
2.0	EDUCATION/PROFESSIONAL DEVELOPMENT		15
2.1	Provide continuing education and skills training for GPs, nursing and other allied health as needed.		
2.2	Provides clinical supervision and consultation within a multi-disciplinary team environment, including medical, nursing and allied health staff, in accordance with best practice guidelines.		
2.3	Participate in, support and lead training programs for health care providers and community groups.		
2.4	Participate in relevant and applicable professional development activities and research projects.		
2.5	Substantially contribute to and promote the clinical teaching of staff and other health care providers, to ensure the implementation of evidence based practice and continuous quality improvement of the Goldfields Mental Health Service.		
2.6	Initiates and participates in research projects which are relevant to the operation of the Mental Health Service and will contribute to positive consumer outcomes locally.		
2.7	Participates in professional development activities which are relevant to the operation of the Mental Health Service and will contribute to positive consumer outcomes locally.		
2.8	Participates in self-evaluation and performance management with Manager annually and as required.		

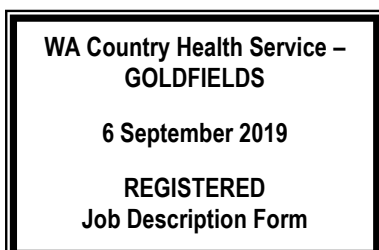
Section 4 – STATEMENT OF DUTIES continued next page



TITLE	Consultant Psychiatrist	POSITION NO	601575
		CLASSIFICATION	MP Year 1 - 9

Section 4 - STATEMENT OF DUTIES continued

3.0	CLINICAL GOVERNANCE		10
3.1	Attends to statutory requirements concerning the admission, detention and discharge of patients.		
3.2	Maintains clinical records, PSOLIS and NOCC records and provides reports as required.		
3.3	Participation in the development and implementation of Quality Improvement activities.		
3.4	Assists the Manager with service development, implementation and evaluation as required.		
3.5	Liaises and consults with colleagues and external agencies regarding client management		
4.0	PARTNERSHIPS		10
4.1	Liaise with the Chief Psychiatrist of the WA Health Department as required Support, engage in, and promote connections with other mental health services and academic units.		
4.2	Foster, support and promote and formation of community mental health groups of carers, consumers and other stakeholders, and establish ongoing liaison and consultation with these groups. Research/Professional Development.		
5.0	OTHER		5
5.1	Undertakes Maintains good public relations with patients, relatives, media and non-government services.		
5.2	Travels within the Goldfields region as required.		
	The occupant of this position will be expected to comply with and demonstrate a positive commitment to the highest achievement level in Equal Employment Opportunity, Occupational Safety & Health, Public Sector Standards, Code of Conduct, Code of Ethics, Quality Improvement, Performance Management, Customer Focus, Disability Services Act and Confidentiality throughout the course of their duties.		
Frequency: D - Daily, W - Weekly, , F - Fortnightly, R - Regularly, O - Occasionally, A - Annually			



TITLE	Consultant Psychiatrist	POSITION NO	601575
		CLASSIFICATION	MP Year 1 - 9

Section 5 – SELECTION CRITERIA

ESSENTIAL

1. Eligible for registration by the Medical Board of Australia.
2. Fellowship of the Royal Australian and New Zealand College of Psychiatrists, or equivalent.
3. Demonstrated clinical skills and extensive clinical experience in acute mental health using a shared care model of service.
4. Demonstrated knowledge of psychological theories, models and practice. Knowledge of/and experience in biological and psychotherapeutic interventions.
5. Effective communication (oral and written) and interpersonal skills within a multidisciplinary service.
6. Highly developed report writing and policy formulation skills and analytical ability.
7. Ability to manage people, including leadership and motivation skills.
8. Eligible for / or in possession of a current C or C-A Class driver's licence.

DESIRABLE

1. Knowledge of the Western Australian Mental Health Act 2014 and other related legislation.
2. Experience and interest in Child & Adolescent Psychiatry.
3. Experience working in community based mental health services.
4. Experience training postgraduates and clinical supervisory skills.
5. Current knowledge and commitment to Equal Opportunity in all aspects of employment and service delivery.

Section 6 – APPOINTMENT FACTORS

Location	Kalgoorlie	Accommodation	As determined by the WA Country Health Service Policy
Allowances/ Appointment Conditions	Appointment is subject to: <ul style="list-style-type: none"> • Evidence of registration by the Medical Board of Australia must be provided prior to commencement • Provision of the minimum identity proofing requirements. • Successful Criminal Record Screening clearance • Successful Pre-Employment Health Assessment • Successful WA Health Integrity Check • Evidence of a current C or C-A Class drivers licence and ability to travel within the region as required including overnight stays • Participation in an after-hours on-call roster Allowances <ul style="list-style-type: none"> • District Allowance as applicable 		
Specialised equipment operated			

Section 7 – CERTIFICATION

The details contained in this document are an accurate statement of the duties, responsibilities and other requirements of the position.

Signature and Date: ____/____/____
Regional Manager Mental Health

Signature and Date: ____/____/____
Regional Director

As occupant of the position I have noted the statement of duties, responsibilities and other requirements as detailed in this document.

Name	Signature	Date Appointed	Date Signed

