



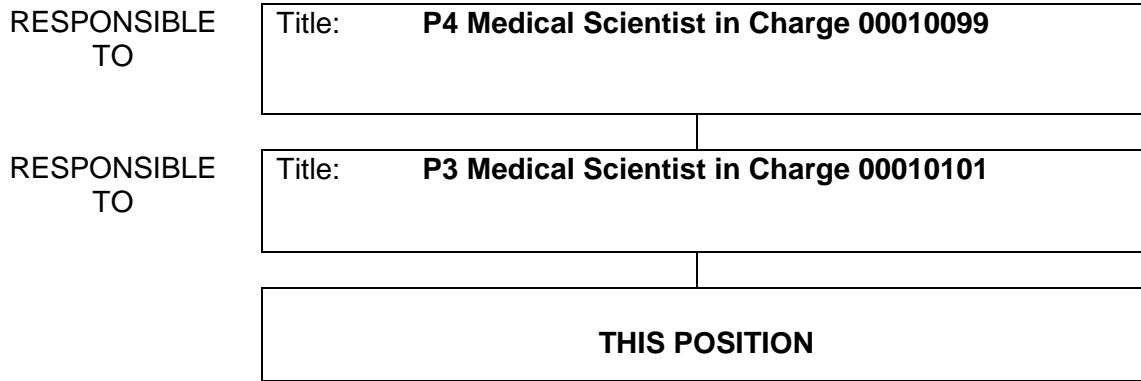
<CLEARANCE REG NO. PWWF2674 – DG22MAY2019>

SECTION 1 - POSITION IDENTIFICATION

NETWORK	FSH
SITE	FSH
DEPARTMENT	Clinical Immunology
SECTION	Immunopathology, Autoimmunity and Infection Immunology

POSITION TITLE	Senior Medical Scientist
LEVEL	P2
POSITION NO	00010107
AWARD	Health Salaried Officers Agreement

SECTION 2 - POSITION RELATIONSHIPS



Positions under direct Supervision:

<u>Position No.</u>	<u>Title</u>	<u>Classification</u>	<u>FTE</u>

SECTION 3 - KEY RESPONSIBILITIES

State BRIEFLY the key responsibilities or prime function of the position. Refer to definitions of terms to ensure the correct meaning of verbs frequently used eg. Controls, Maintains, etc.

- Applies prescribed procedures and techniques in the examination of clinical specimens within the Department of Clinical Immunology, PathWest FSH Network.
- Applies modern principles and practices to contribute to the development of improved processes and procedures for the examination of clinical specimens.
- Provides expert and specialist scientific consultancy to both internal and external clients.

JOB DESCRIPTION FORM

PAGE 2 OF 3

SENIOR MEDICAL SCIENTIST, LEVEL P2, POSITION NO 00010107.

SECTION 4 – BRIEF STATEMENT OF DUTIES

Duty No.	Details
1.0	<p>Within an assigned area of the laboratory and in accordance with quality assurance and safety standards:</p> <p>PROFESSIONAL</p> <p>1.1 Applies advanced procedures and techniques to examine both routine and complex specimens within Clinical Immunology.</p> <p>1.2 Provides expert and specialist scientific consultancy to PathWest clients.</p> <p>1.3 Under direction from the Consultant Immunologist and/or Medical Scientist in Charge, provides expert and specialist scientific consultancy to external clients.</p> <p>1.4 Investigates, evaluates and reviews existing practices and methodology and implements improvements to ensure current quality standards are maintained, evaluated and improved. Reviews and updates methods accordingly and annually.</p> <p>1.5 Interprets and validates laboratory results within clinical immunology.</p> <p>1.6 Prepares statistical data and other reports as necessary.</p> <p>1.7 Participates in and contributes to educational activities both internal and external to the Department.</p> <p>1.8 Investigate and develop new assays and procedures in conjunction with the Medical Scientist in Charge and other staff. Document validation of updated and new assays as per Departmental procedures.</p>
2.0	<p>SUPERVISORY (<i>As Required</i>)</p> <p>2.1 Supervises and provides training for professional and laboratory staff, and students.</p> <p>2.2 Implements and reviews staff development and continuing education programs.</p>
3.0	<p>OTHER</p> <p>3.1 Performs duties in accordance with organisational Policies and Procedures.</p> <p>3.2 Performs duties in accordance with relevant Occupational Health and Safety and Equal Opportunity Legislation.</p> <p>3.3 Conducts duties in a manner that is ethical and promotes a positive image of PathWest Laboratory Medicine WA.</p> <p>3.4 Participates in Performance Planning and Review.</p> <p>3.5 Performs other duties as directed.</p>

JOB DESCRIPTION FORM

PAGE 3 OF 3

SENIOR MEDICAL SCIENTIST, LEVEL P2, POSITION NO 00010107.

SECTION 5 - SELECTION CRITERIA

ESSENTIAL MINIMUM REQUIREMENTS

1. Tertiary qualification in medical science and eligible for membership of relevant professional body.
2. Substantial experience in clinical immunology relevant to autoimmunity techniques.
3. Demonstrated experience with laboratory instrumentation, techniques and IT packages/applications.
4. Demonstrated high standard of negotiation, organisational and liaison skills.
5. Demonstrated high standard of written and verbal communication skills.
6. Demonstrated ability to prepare scientific reports and presentations.
7. Demonstrated use of analytical and problem solving skills.
8. Demonstrated ability to work cooperatively and effectively in a multidisciplinary team environment.
9. Current knowledge of legislative obligations for Equal Opportunity, Disability Services and Occupational Safety and Health, and how these impact on employment and service delivery.

DESIRABLE REQUIREMENTS

1. Possession of, or progress towards, an appropriate post-graduate qualification.
2. Evidence of demonstrated commitment to continued professional development.
3. Member of relevant professional body.

SECTION 6 – APPOINTMENT FACTORS

1. Evidence of eligibility for or current professional membership of the relevant professional body must be provided prior to commencement.
2. Available for after hours, overtime and on-call work as required.

LOCATION	FSH	ACCOMMODATION
ALLOWANCES/SPECIAL CONDITIONS/PRE-EMPLOYMENT REQUIREMENTS:		
- Successful criminal record clearance as per Department of Health’s Criminal Record Screening Policy.		
- Completion of identification check.		
- Successful Pre-Employment Health Assessment required.		
- Successful Pre-Employment Integrity checks required.		
SPECIALISED EQUIPMENT OPERATED		

CERTIFICATION

The details contained in this document are an accurate statement of the duties, responsibilities and other requirements of the position.

HEAD OF DEPARTMENT/ PRINCIPAL MEDICAL SCIENTIST CHIEF EXECUTIVE

SIGNATURE

SIGNATURE

DATE

DATE

As occupant of the position I have noted the statement of duties, responsibilities and other requirements as detailed in this document.

NAME	SIGNATURE	DATE APPOINTED TO POSITION	DATE