

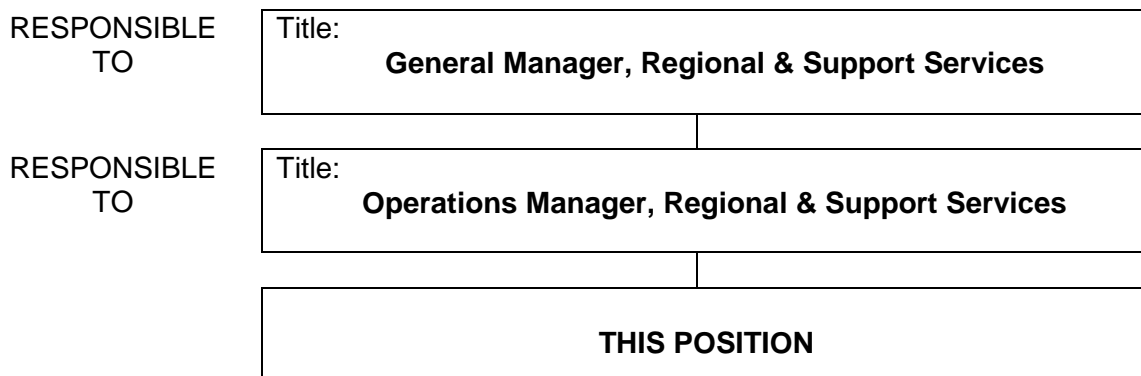


<CLEARANCE REG NO. PWWF2660 – DG29APR2019>

**SECTION 1 - POSITION IDENTIFICATION**

<b>NETWORK</b>	Regional & Support Services	<b>POSITION TITLE</b>	Medical Scientist
<b>DEPARTMENT</b>	Regional Services	<b>LEVEL</b>	P1
<b>SECTION</b>	Branch Relief	<b>POSITION NO</b>	00003593
		<b>AWARD</b>	Health Salaried Officers Agreement

**SECTION 2 - POSITION RELATIONSHIPS**



Positions under direct Supervision:

<u>Position No.</u>	<u>Title</u>	<u>Classification</u>	<u>FTE</u>
<i>Supervision of laboratory staff may be required depending on the work setting.</i>			

**SECTION 3 - KEY RESPONSIBILITIES**

State BRIEFLY the key responsibilities or prime function of the position. Refer to definitions of terms to ensure the correct meaning of verbs frequently used eg. Controls, Maintains, etc.

Applies prescribed procedures and techniques in the examination of Haematology, Biochemistry, Microbiology and Transfusion Medicine specimens within a multi-disciplinary Branch laboratory.

Applies modern principles and practices to contribute to the development of improved processes and procedures for the examination of pathology specimens.

**JOB DESCRIPTION FORM**

PAGE 2 OF 3

**MEDICAL SCIENTIST, LEVEL P1, POSITION NO 00003593**

**SECTION 4 – BRIEF STATEMENT OF DUTIES**

Duty No.	Details
<p><b>1.0</b></p> <p><b>PROFESSIONAL</b></p> <p>1.1</p> <p>1.2</p> <p>1.3</p> <p>1.4</p> <p>1.5</p> <p>1.6</p> <p>1.7</p> <p>1.8</p> <p>1.9</p> <p>1.10</p> <p>1.11</p> <p><b>2.0</b></p> <p><b>OTHER</b></p> <p>2.1</p> <p>2.2</p> <p>2.3</p> <p>2.4</p> <p>2.5</p>	<p>Applies approved procedures and practices to examine routine Haematology, Biochemistry, Microbiology and Transfusion Medicine specimens.</p> <p>Examines and interprets results with respect to normal values and their significance in accordance with standard laboratory practice and procedures.</p> <p>Prepares statistical data and technical reports as required.</p> <p>Participates in the evaluation of procedures and recommends improvements in consultation with other professional staff.</p> <p>Participates in and contributes to staff educational activities.</p> <p>Participates in approved relevant research and developmental projects.</p> <p>Undertakes continuing professional development to maintain professional standards and technical skills.</p> <p>Provides consultancy service to internal and external medical and scientific clients.</p> <p>Applies approved procedures and practices to examine complex specimens.</p> <p>Maintains equipment, specialist stock and expendable supplies.</p> <p>Supervises laboratory staff as required.</p> <p>Performs duties in accordance with organisational Policies and Procedures.</p> <p>Performs duties in accordance with relevant Occupational Health and Safety and Equal Opportunity Legislation.</p> <p>Conducts duties in a manner that is ethical and promotes a positive image of PathWest Laboratory Medicine WA.</p> <p>Participates in Performance Planning and Review.</p> <p>Performs other duties as directed.</p>
	<p><b><i>Classification Descriptor for Level P-1 (Health Professionals Work Value Review)</i></b>  <i>Level P-1 provides for health professionals from entry level following tertiary graduation to the maximum point within the Level P-1 incremental range.</i></p> <p><i>Initially the work of a new graduate is subject to professional supervision and at entry level the health professional will deliver professional services and will make decisions that impact on the services they provide with formal supervision and guidance from senior health professionals.</i></p> <p><i>As experience is gained, the contribution and the level of professional judgement increases and professional supervision decreases, until a wide range of professional tasks is capable of being performed under general professional guidance. With experience and increased skill level, independent professional judgement will be exercised in recognising and solving problems and managing cases where principles, procedures, techniques and methods require expansion, adaptation or modification.</i></p> <p><i>Having progressed to the maximum point within the Level P-1 incremental range the health professional will be an autonomous practitioner.</i></p>

**JOB DESCRIPTION FORM**

PAGE 3 OF 3

**MEDICAL SCIENTIST, LEVEL P1, POSITION NO 00003593**

**SECTION 5 - SELECTION CRITERIA**

**ESSENTIAL MINIMUM REQUIREMENTS**

1. Tertiary qualification in Medical Science and eligible for membership of the Australian Institute of Medical Scientists (AIMS).
2. Demonstrated knowledge of laboratory procedures relevant to Haematology and Transfusion Medicine.
3. Demonstrated use of analytical and problem solving skills.
4. Demonstrated good interpersonal and written and verbal communication skills.
5. Demonstrated ability to work cooperatively and effectively in a multi disciplinary team environment.
6. Demonstrated ability to operate within set standards and protocols.
7. Commitment to continued professional development.

**DESIRABLE REQUIREMENTS**

1. Post-graduate experience in laboratory Microbiology and Biochemistry.
2. Current knowledge and commitment to Equal Opportunity and Occupational Health & Safety in all aspects of employment and service delivery.

**SECTION 6 – APPOINTMENT FACTORS**

1. Evidence of eligibility for or current professional membership of the Australian Institute of Medical Scientists (AIMS) must be provided prior to commencement.
2. Working arrangements include 152 hours over any 28 consecutive days, including Saturday and Sunday and availability for after hours and rostered duties as required.
3. Medical Scientists required to work without direct supervision when undertaking shift work are required to have appropriate post graduate experience in the relevant discipline or scientific area.
4. Provide relief as a Medical Scientist throughout PathWest Regional laboratories including intrastate travel.

<b>LOCATION</b> Perth/Regional location as required	<b>ACCOMMODATION</b>
<b>ALLOWANCES/SPECIAL CONDITIONS/PRE-EMPLOYMENT REQUIREMENTS:</b>	
- <b>Successful criminal record clearance</b> as per Department of Health’s Criminal Record Screening Policy.	
- <b>Completion of identification check.</b>	
- <b>Successful Pre-Employment Health Assessment required.</b>	
- <b>Successful Pre-Employment Integrity checks required.</b>	
<b>SPECIALISED EQUIPMENT OPERATED</b>	

**CERTIFICATION**

The details contained in this document are an accurate statement of the duties, responsibilities and other requirements of the position.

**HEAD OF DEPARTMENT/ PRINCIPAL SCIENTIST**

**SITE DIRECTOR**

**SIGNATURE**

**SIGNATURE**

**DATE**

**DATE**

As occupant of the position I have noted the statement of duties, responsibilities and other requirements as detailed in this document.

<b>NAME</b>	<b>SIGNATURE</b>	<b>DATE APPOINTED TO POSITION</b>	<b>DATE</b>