

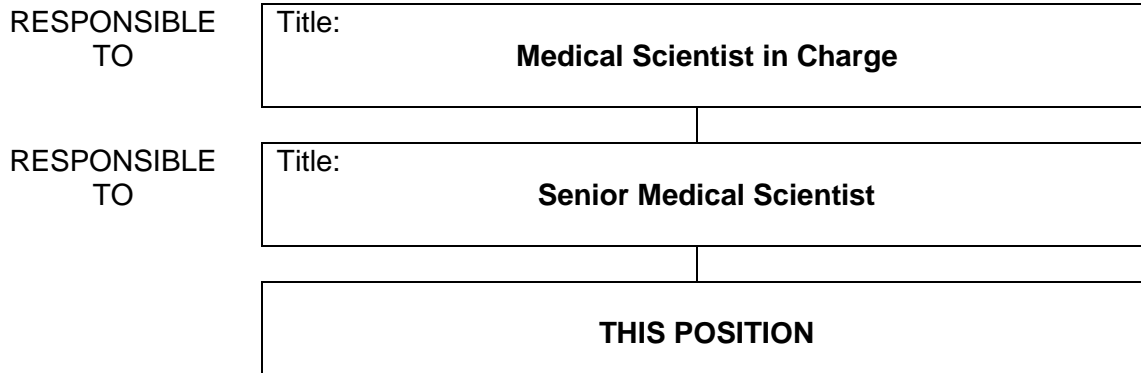


<CLEARANCE REG NO. PWWF2635 – DG22FEB2019>

**SECTION 1 - POSITION IDENTIFICATION**

<b>SITE</b>	QEII	<b>POSITION TITLE</b>	Medical Scientist
<b>DEPARTMENT</b>	Anatomical Pathology	<b>LEVEL</b>	P1
<b>SECTION</b>	Electron Microscopy	<b>POSITION NO</b>	00007510
		<b>AWARD</b>	Health Salaried Officers Agreement

**SECTION 2 - POSITION RELATIONSHIPS**



Positions under direct Supervision:

<u>Position No.</u>	<u>Title</u>	<u>Classification</u>	<u>FTE</u>
00003027	Technical Assistant	G3	0.5

**SECTION 3 - KEY RESPONSIBILITIES**

State BRIEFLY the key responsibilities or prime function of the position. Refer to definitions of terms to ensure the correct meaning of verbs frequently used eg. Controls, Maintains, etc.

Applies prescribed procedures and techniques in the examination of diagnostic clinical specimens.

Applies modern principles and practices to contribute to the development of improved processes and procedures for the examination of pathology specimens in Electron Microscopy.

**JOB DESCRIPTION FORM**

PAGE 2 OF 3

**MEDICAL SCIENTIST, LEVEL P1, POSITION NO. 00007510**

**SECTION 4 – BRIEF STATEMENT OF DUTIES**

Duty No.	Details
<p><b>1.0</b></p>	<p><b>PROFESSIONAL</b></p> <p>1.1 Applies approved procedures and practices to examine both routine and complex diagnostic clinical specimens in Electron Microscopy.</p> <p>1.2 Examines and interprets results with respect to normal values and their significance in accordance with standard laboratory practice and procedures.</p> <p>1.3 Participates in the evaluation of procedures and recommends improvements in consultation with other professional staff.</p> <p>1.4 Prepares statistical data and technical reports as required.</p> <p>1.5 Contributes to educational activities with other staff and students.</p> <p>1.6 Participates in approved relevant research and developmental projects.</p> <p>1.7 Undertakes continuing professional development to maintain professional standards and technical skills.</p> <p>1.8 Provides consultancy service to internal and external medical and scientific clients.</p> <p>1.9 Maintains equipment, specialist stock and expendable supplies.</p> <p>1.10 Supervises laboratory staff as required.</p>
<p><b>2.0</b></p>	<p><b>OTHER</b></p> <p>2.1 Performs duties in accordance with organisational Policies and Procedures.</p> <p>2.2 Performs duties in accordance with relevant Occupational Health and Safety and Equal Opportunity Legislation.</p> <p>2.3 Conducts duties in a manner that is ethical and promotes a positive image of PathWest Laboratory Medicine WA.</p> <p>2.4 Participates in Performance Planning and Review.</p> <p>2.5 Performs other duties as directed.</p>
	<p><b><u>Classification Descriptor for Level P-1</u></b> (<i>Health Professionals Work Value Review</i>)  <i>Level P-1 provides for health professionals from entry level following tertiary graduation to the maximum point within the Level P-1 incremental range.</i></p> <p><i>Initially the work of a new graduate is subject to professional supervision and at entry level the health professional will deliver professional services and will make decisions that impact on the services they provide with formal supervision and guidance from senior health professionals.</i></p> <p><i>As experience is gained, the contribution and the level of professional judgement increases and professional supervision decreases, until a wide range of professional tasks is capable of being performed under general professional guidance. With experience and increased skill level, independent professional judgement will be exercised in recognising and solving problems and managing cases where principles, procedures, techniques and methods require expansion, adaptation or modification.</i></p> <p><i>Having progressed to the maximum point within the Level P1 incremental range the health professional will be an autonomous practitioner.</i></p>

**MEDICAL SCIENTIST, LEVEL P1, POSITION NO. 00007510**

**SECTION 5 - SELECTION CRITERIA**

**ESSENTIAL MINIMUM REQUIREMENTS**

1. Tertiary qualification in medical science relevant to diagnostic electron microscopy, and eligible for membership of relevant professional body.
2. Demonstrated knowledge of laboratory procedures relevant to biomedical electron microscopy, including digital image technology.
3. Demonstrated use of analytical and problem solving skills.
4. Demonstrated good interpersonal and communication skills.
5. Demonstrated ability to work cooperatively and effectively in a multi-disciplinary team.
6. Demonstrated ability to operate within set standards and protocols.
7. Commitment to continued professional development.
8. Current knowledge and commitment to Equal Opportunity and Occupational Health & Safety in all aspects of employment and service delivery.

**DESIRABLE REQUIREMENTS**

1. Commitment to good customer service.

**SECTION 6 – APPOINTMENT FACTORS**

1. Evidence of eligibility for or current professional membership of the relevant professional body must be provided prior to commencement.
2. Working arrangements include 152 hours over any 28 consecutive days, including Saturday and Sunday.
3. Participation in after hours and weekend duties.
4. Medical Scientists required to work without direct supervision when undertaking shift work are required to have appropriate post graduate experience in the relevant discipline or scientific area.

LOCATION	QEII	ACCOMMODATION
<b>ALLOWANCES/SPECIAL CONDITIONS/PRE-EMPLOYMENT REQUIREMENTS:</b>		
- <b>Successful criminal record clearance</b> as per Department of Health's Criminal Record Screening Policy.		
- <b>Completion of identification check.</b>		
- <b>Successful Pre-Employment Health Assessment required.</b>		
- <b>Successful Pre-Employment Integrity checks required.</b>		

**CERTIFICATION**

The details contained in this document are an accurate statement of the duties, responsibilities and other requirements of the position.

**HEAD OF DEPARTMENT/ PRINCIPAL MEDICAL SCIENTIST      SITE DIRECTOR**

**SIGNATURE**

**SIGNATURE**

**DATE**

**DATE**

As occupant of the position I have noted the statement of duties, responsibilities and other requirements as detailed in this document.

NAME	SIGNATURE	DATE APPOINTED TO POSITION	DATE