

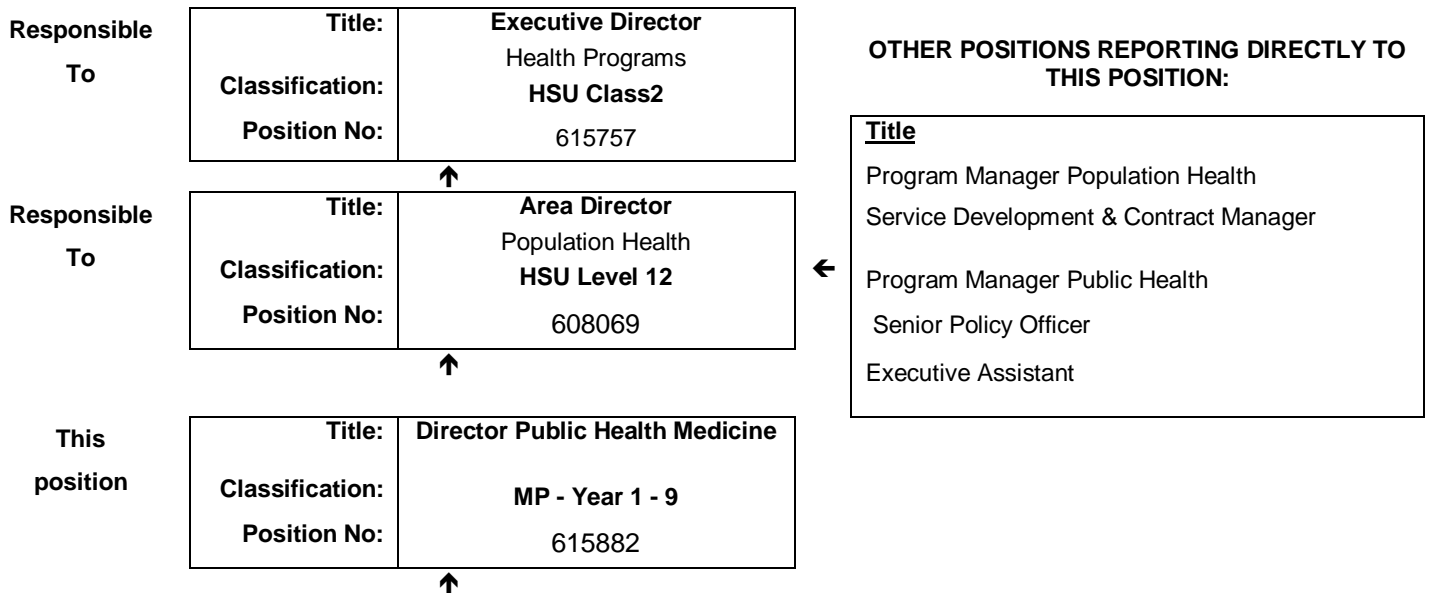


JOB DESCRIPTION FORM

Section 1 – POSITION IDENTIFICATION

Central Office		Position No:	615882
Division:	WA Country Health Service	Title:	Director Public Health Medicine
Branch:	Health Programs	Classification:	MP - Year 1 - 9
Section:	Population Health	Award/Agreement	Medical Practitioners Agreement

Section 2 – POSITION RELATIONSHIPS



Positions under direct supervision:	← Other positions under control:				
<table style="width: 100%; border-collapse: collapse;"> <tr> <td style="width: 50%;">Position No.</td> <td style="width: 50%;">Title</td> </tr> </table>	Position No.	Title	<table style="width: 100%; border-collapse: collapse;"> <tr> <td style="width: 50%;">Category</td> <td style="width: 50%;">Number</td> </tr> </table>	Category	Number
Position No.	Title				
Category	Number				

Section 3 – KEY RESPONSIBILITIES

Provides clinical leadership for WA Country Health Service (WACHS) wide public health services in partnership with the Area Director Population Health and promotes improvement in public health care and innovation for excellence in the area of public health.

Provides public health and clinical medical expertise in the prevention, identification and management of communicable diseases and other public health issues for nominated WACHS regions.

TITLE	Director Public Health Medicine	POSITION NO	615882
		CLASSIFICATION	MP Year 1-9



The WA Country Health Service (WACHS) is the largest country health system in Australia and one of the biggest in the world, providing health services to over half a million people, including over 50,000 Aboriginal people, over a vast two and a half million square kilometres area.

WA Country Health Service hospitals handle almost as many births as the State’s major maternity hospital – and 40% of the State’s emergency presentations. The range of health services provided include acute inpatient and emergency care, population and public health, mental health, Aboriginal health, aged care and includes increasing number of services provided by telehealth video-conferencing.

Our dedicated and committed staff work hard to fulfil our vision of Healthier country communities through partnerships and innovation, to deliver health services that support the health and well-being of individuals and communities in rural and remote Western Australia.

OUR PURPOSE – What we are here to do

WACHS improves country people’s health and well-being through access to quality services and by supporting people to look after their own health.

OUR STRATEGIC DIRECTIONS TO 2018

1. Improving the experience of health care
2. Valuing consumers, staff and partnerships
3. Governance, performance and sustainable services

OUR GUIDING PRINCIPLES

- Consumers first in all we do
- Safe, high quality services and information at all times
- Care closer to home where safe and viable.
- Evidence based services
- Partnerships and collaboration

OUR VALUES

Community – making a difference through teamwork, cooperation, a ‘can do’ attitude and country hospitality.

Compassion – listening and caring with empathy, respect, courtesy and kindness.

Quality – creating a quality health care experience for every consumer, continual improvement, innovation and learning.

Integrity – accountability, honesty and professional, ethical conduct in all that we do.

TITLE	Director Public Health Medicine	POSITION NO	615882
		CLASSIFICATION	MP Year 1-9

Justice – valuing diversity, achieving health equality, cultural respect and a fair share for all.

Section 4 – STATEMENT OF DUTIES

Duty No.	Details	Freq.	%
1.0	LEADERSHIP AND MANAGEMENT – WACHS WIDE		40
1.1	Provides leadership, direction and advice to WACHS Executive and staff on the effective and efficient delivery of public health programs including the management of infectious diseases, disaster preparedness and emergency management responses for public health issues.		
1.2	Advises WACHS regarding compliance with the NSQHS National Standards and works closely with staff within the Public Health Division, WA Health to ensure WACHS compliance with legislation relating to public health and disease control management of outbreak responses.		
1.3	Provides advice and support to regional public health teams in managing complex public health issues and where necessary leads interventions to respond to significant public health issues across country WA.		
1.4	Assists with the analysis of data to describe the health status of populations across WACHS, identifying trends in preventable health conditions and makes recommendations for action.		
1.5	In collaboration with regional public health teams develops policies, guidelines and priorities, monitors performance and KPIs to ensure quality responsive services which address local community public health needs are being delivered.		
1.6	In collaboration with key stakeholders, develops strategies to assist in the reduction of inequity and enhance the health of disadvantaged populations, particularly Aboriginal and Torres Strait Islanders.		
1.7	Contributes to the Strategic planning, implementation and evaluation of high quality clinical services to enhance and protect the health of the population.		
1.8	Participates in the education and professional development of WACHS staff and those of other relevant agencies in matters pertaining to public health, including WACHS credentialing standards		
2.0	DISEASE CONTROL –SOUTH WEST AND WHEATBELT REGIONS		35
2.1	Ensures compliance with legislation relating to population health and disease control.		
2.2	Supports the Southwest and Wheatbelt Public Health teams to manage outbreaks of communicable diseases and co-ordinates strategies to prevent transmission, including the delivery of effective immunisation services.		
2.3	Collaborates with the Southwest and Wheatbelt Disease Control staff and key stakeholders to prevent, control and manage communicable diseases.		
2.4	Provides clinical consultancy to regional Disease Control staff and key stakeholders on infectious disease prevention, control and management.		
2.5	Participates in planning, implementing and evaluating services that assist in primary, secondary and tertiary prevention of non-communicable diseases.		
3.0	EPIDEMIOLOGY, RESEARCH AND DEVELOPMENT – SOUTH WEST AND WHEATBELT REGIONS		10
3.1	Assists with the analysis of data to describe the health status of populations within the region. Identifies health issues and makes recommendations for action.		

TITLE	Director Public Health Medicine	POSITION NO	615882
		CLASSIFICATION	MP Year 1-9

3.2	Makes recommendations based on evidence for appropriate public health interventions.		
3.3	Provides direction to and assists with the evaluation of population health interventions.		
3.4	Co-ordinates surveillance and in collaboration with key stakeholders develops appropriate actions.		
4.0	HEALTH PROTECTION – SOUTHWEST AND WHEATBELT REGIONS		10
4.1	Responds to emergencies that pose a threat to public health.		
4.2	Ensures that public health emergency plans, including pandemic plans are in place and updated at a local and regional level		
4.3	Works with government and non-government agencies to develop and implement strategies to address threats to environmental health		
4.4	Liaises and co-ordinates with relevant key stakeholders to develop and enhance services that protect the community.		
6.0	OTHER		5
6.1	Works in collaboration with WACHS Medical Education Unit in Training and Development programs for Public Health Medical Professionals		
	Undertake other duties as directed		

The occupant of this position will be expected to comply with and demonstrate a positive commitment to the WACHS values and the highest achievement in demonstrating positive commitment to Equal Employment Opportunity, Occupational Safety & Health, Public Sector Standards, Code of Conduct, Code of Ethics, Quality Improvement, Performance Management, Customer Focus, Disability Services Act and Confidentiality throughout the course of their duties.

TITLE	Director Public Health Medicine	POSITION NO	615882
		CLASSIFICATION	MP Year 1-9

Section 5 – SELECTION CRITERIA

ESSENTIAL

1. Eligible for registration by the Medical Board of Australia.
2. Fellowship of the Australasian Faculty of Public Health Medicine or equivalent.
3. Demonstrated experience in public health practice.
4. Demonstrated high level skills and experience in development, implementation and evaluation of public health programs.
5. Well – developed conceptual, analytical and evaluations skills, including commitment to working with a coordinated multidisciplinary team to support ongoing clinical service redesign and improve systems of care provision.
6. Demonstrated high level interpersonal, negotiation and conflict resolution skills, and an ability to liaise effectively with consumers, carers and clinicians.
7. Current knowledge of legislative and regulatory requirements in the areas of Equal Opportunity, Disability Services and Occupational Safety & Health, and how these impact on employment, people management and service delivery.
8. Possession of a current C or C-A class driver's licence.

DESIRABLE

1. Experience in working in a cross-cultural / rural or remote environment.
2. Clinical Management experience.
3. Computer skills including familiarity with various data-bases and data analysis software.

Section 6 – APPOINTMENT FACTORS

Location	Perth	Accommodation	As per WACHS Accommodation Policy
Allowances/ Appointment Conditions	Appointment is subject to: <ul style="list-style-type: none"> • Evidence of registration by the Medical Board of Australia must be provided prior to commencement. • Provision of the minimum identity proofing requirements. • Successful Pre- Placement Health Screening clearance. • Successful Criminal Record Screening. • Successful Working with Children (WWC) Check. • Completion of training for Mandatory Reporting of Child Sexual Abuse. • Evidence of a current C or C-A Class drivers licence with the ability and willingness to undertake regional travel. 		
Specialised equipment operated			

Section 7 – CERTIFICATION

The details contained in this document are an accurate statement of the duties, responsibilities and other requirements of the position.

Signature and Date: ____/____/____
Executive Services

Signature and Date: ____/____/____
Chief Executive Officer

As occupant of the position I have noted the statement of duties, responsibilities and other requirements as detailed in this document.

Name	Signature	Date Appointed	Date Signed

