



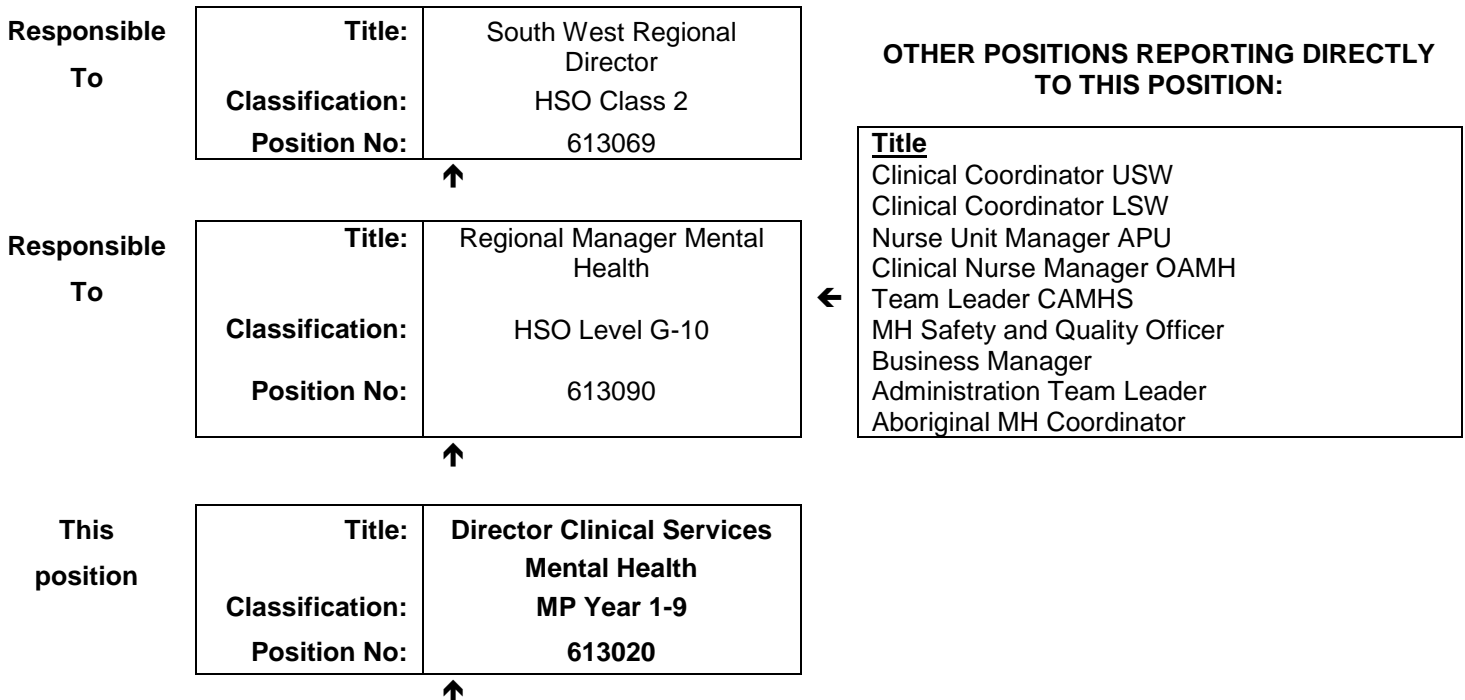
**Government of Western Australia
WA Country Health Service**

JOB DESCRIPTION FORM

Section 1 – POSITION IDENTIFICATION

WA Country Health Service		Position No:	613020
Division:	South West	Title:	Director Clinical Services Mental Health
Branch:	Mental Health	Classification:	MP Year 1-9
Section:	South West Region	Award/Agreement	Medical Practitioners Agreement

Section 2 – POSITION RELATIONSHIPS



Positions under direct supervision:	← Other positions under control:														
<table border="1"> <thead> <tr> <th>Position No.</th> <th>Title</th> </tr> </thead> <tbody> <tr> <td></td> <td>Consultant Psychiatrist</td> </tr> <tr> <td></td> <td>Medical Officers</td> </tr> <tr> <td></td> <td>Registrar</td> </tr> <tr> <td></td> <td>Resident Medical Officer</td> </tr> </tbody> </table>	Position No.	Title		Consultant Psychiatrist		Medical Officers		Registrar		Resident Medical Officer	<table border="1"> <thead> <tr> <th>Category</th> <th>Number</th> </tr> </thead> <tbody> <tr> <td> </td> <td> </td> </tr> </tbody> </table>	Category	Number		
Position No.	Title														
	Consultant Psychiatrist														
	Medical Officers														
	Registrar														
	Resident Medical Officer														
Category	Number														

Section 3 – KEY RESPONSIBILITIES

In partnership with the Regional Manager of Mental Health, has primary responsibility for clinical governance and leadership in relation to clinical service delivery. Provides line management for medical staff and works with budget holders to ensure appropriate allocation of staff to sites and services. In partnership with the mental health management team, ensure strategic development, coordination, integration, monitoring and evaluation of the WACHS – SW mental health service. Provides clinical services as agreed. Supports and promotes the Commonwealth, State and WACHS mental health strategies.

**WA Country Health Service
South West**

09 January 2019

REGISTERED

TITLE	Director Clinical Services Mental Health	POSITION NO	613020
		CLASSIFICATION	MP Year 1-9



The WA Country Health Service (WACHS) is the largest country health system in Australia and one of the biggest in the world, providing health services to over half a million people, including over 50,000 Aboriginal people, over a vast two and a half million square kilometres area.

WA Country Health Service hospitals handle almost as many births as the State’s major maternity hospital – and 40% of the State’s emergency presentations. The range of health services provided include acute inpatient and emergency care, population and public health, mental health, Aboriginal health, aged care and includes increasing number of services provided by telehealth video-conferencing.

Our dedicated and committed staff work hard to fulfil our vision of Healthier country communities through partnerships and innovation, to deliver health services that support the health and well-being of individuals and communities in rural and remote Western Australia.

OUR PURPOSE

WACHS improves country people’s health and well-being through access to quality services and by supporting people to look after their own health.

OUR STRATEGIC DIRECTIONS TO 2018

1. Improving health the experience of care
2. Valuing consumers, staff and partnerships
3. Governance, performance and sustainable services



OUR GUIDING PRINCIPLES

Consumers first in all we do Safe, high quality services and information at all times Care closer to home where safe and viable. Evidence based services.

Partnerships and collaboration.

OUR VALUES

Community – making a difference through teamwork, cooperation, a ‘can do’ attitude and country hospitality.

Compassion – listening and caring with empathy, respect, courtesy and kindness.

Quality – creating a quality health care experience for every consumer, continual improvement, innovation and learning.

Integrity – accountability, honesty and professional, ethical conduct in all that we do.

Justice – valuing diversity, achieving health equality, cultural respect and a fair share for all.

TITLE	Director Clinical Services Mental Health	POSITION NO	613020
		CLASSIFICATION	MP Year 1-9

Section 4 – STATEMENT OF DUTIES

Duty No.	Details	Freq.	%
1.0	CLINICAL SERVICES	D	70
1.1	In partnership with the Regional Manager ensures staff and service systems compliance with the WA Mental Health Act (2014) and other relevant legislation and regulations.		
1.2	Undertakes comprehensive psychiatric assessment, diagnosis and treatment that ensures best practice clinical interventions are provided to clients, their relatives and carers.		
1.3	Provides a broad range of therapeutic interventions in response to the range of clinical presentations.		
1.4	Develops formal links with primary care providers, particularly general practitioners, to promote continuity of treatment, shared care management and provide ongoing education about psychiatric disorders and the provision of professional support.		
1.5	Liaises and consults with specialist consultants, inpatient services and relevant external agencies in regard to patient management.		
1.6	Ensures that a comprehensive visiting psychiatric service is provided throughout the region, including consultation-liaison services to hospitals within the region.		
1.7	Supervises Registrars in training and other medical officers as per RANZCP standards.		
1.8	Participates in Continuing Professional Development.		
1.9	Provides clinical supervision to staff as part of performance development programs.		
1.10	Promotes and participates in the education and continued professional development of staff in the mental health service and related areas.		
1.11	Maintains client records and statistical data, as required.		
2.0	LEADERSHIP	R	20
2.1	Participates as a senior member of the service management team.		
2.2	Represents the South West on the WACHS Mental Health Leadership group and actively participates in that group to plan, develop, implement and evaluate Area wide strategic initiatives.		
2.3	Works in partnership with the Regional Manager (Mental Health) to provide clinical leadership to the service, identifying and developing strategies to address priorities.		
2.4	Participates in developing service strategic and business plans, and supports strategies to achieve their outcomes.		
2.5	Evaluates training and development requirements of the service.		
2.6	Provides advice to the WACHS South West Regional Director, Regional Manager Mental Health and others about regional mental health services and associated issues.		
2.7	Participates in recruitment and selection processes.		
2.8	Supports consumer and carer involvement in the planning, delivery and evaluation of the mental health service.		
2.9	Promotes awareness in the community of mental health issues through education, training and promotion activities.		
2.10	Performs duties in accordance with WACHS-region and program specific policy and procedures.		
2.11	Actively promotes the collection of National Outcome and Casemix Collection data across the service.		
3.0	SAFETY AND QUALITY	R	5
3.1	Acts as the point of clinical accountability for the service, providing clinical leadership for all regional staff.		
3.2	Implements an effective clinical safety, quality and risk management system.		
3.3	Fosters the development and implementation of research relevant to mental health service delivery in rural and remote areas of WA and to the specific needs of the region.		
3.4	Monitors standards of care, work priorities, policies and processes.		
3.5	Participates in performance management of staff when required.		
4.0	OTHER	O	5
4.1	The Director Clinical Services – Mental Health participates in regional reporting processes with the Regional Medical Director.		
4.2	Provides representation on professional bodies and state-wide committees as required.		
4.3	Other duties as directed.		
	The occupant of this position will be expected to comply with and demonstrate a positive commitment to the highest achievement level in Equal Employment Opportunity, Occupational Safety & Health, Public Sector Standards, Code of Conduct, Code of Ethics, Quality Improvement, Performance Management, Customer Focus, Disability Services Act and Confidentiality throughout the course of their duties.		

WA Country Health Service
South West

09 January 2019

REGISTERED

TITLE	Director Clinical Services Mental Health	POSITION NO	613020
		CLASSIFICATION	MP Year 1-9

Section 5 – SELECTION CRITERIA

ESSENTIAL

1. Eligible for registration by the Medical Board of Australia as a Medical Practitioner.
2. Fellowship of the RANZCP or recognised equivalent.
3. Demonstrated experience in developing and implementing clinical governance programs.
4. Demonstrated experience in the management of medical staff.
5. Well-developed strategic management, administrative and analytical skills.
6. Demonstrated clinical skills and experience working with people with mental health problems.
7. Demonstrated understanding of the Mental Health Act 2014.
8. Demonstrated experience and ability to work effectively as part of a multidisciplinary team.
9. Demonstrated highly developed communication and interpersonal skills.
10. Current knowledge of legislative obligations for Equal Opportunity, Disability Services and Occupational Safety and Health, and how these impact on employment and service delivery.
11. Current C or C-A drivers licence.

DESIRABLE

1. Recognised as a clinical supervisor of trainee psychiatrists by the RANZCP.
2. Post graduate qualifications in health service management.
3. Experience in the provision of transcultural mental health services including to indigenous people.
4. Experience working in a rural or remote environment.

Section 6 – APPOINTMENT FACTORS

Location	Bunbury	Accommodation	As determined by the WA Country Health Service Policy
Allowances/ Appointment Conditions	Appointment is subject to: <ul style="list-style-type: none"> • Evidence of registration by the Medical Board of Australia as a Medical Practitioner must be provided prior to commencement. • Evidence of Fellowship of the RANZCP or recognised equivalent must be provided prior to commencement. • Completion of a 100 point identification check. • Successful Criminal Record Screening clearance. • Successful Pre- Placement Health Screening clearance. • Evidence of current C or C-A Class drivers licence. • This position is subject to a Working With Children (WWC) Check. This is a compulsory check for people who carry out child-related work in Western Australia and completion of training for Mandatory Reporting of Child Sexual Abuse. 		
Specialised equipment operated			

Section 7 – CERTIFICATION

The details contained in this document are an accurate statement of the duties, responsibilities and other requirements of the position.

Signature and Date: ____/____/____
Executive Services

Signature and Date: ____/____/____
Chief Executive Officer

As occupant of the position I have noted the statement of duties, responsibilities and other requirements as detailed in this document.

Name	Signature	Date Appointed	Date Signed

<p>WA Country Health Service South West</p> <p>09 January 2019</p> <p>REGISTERED</p>
