

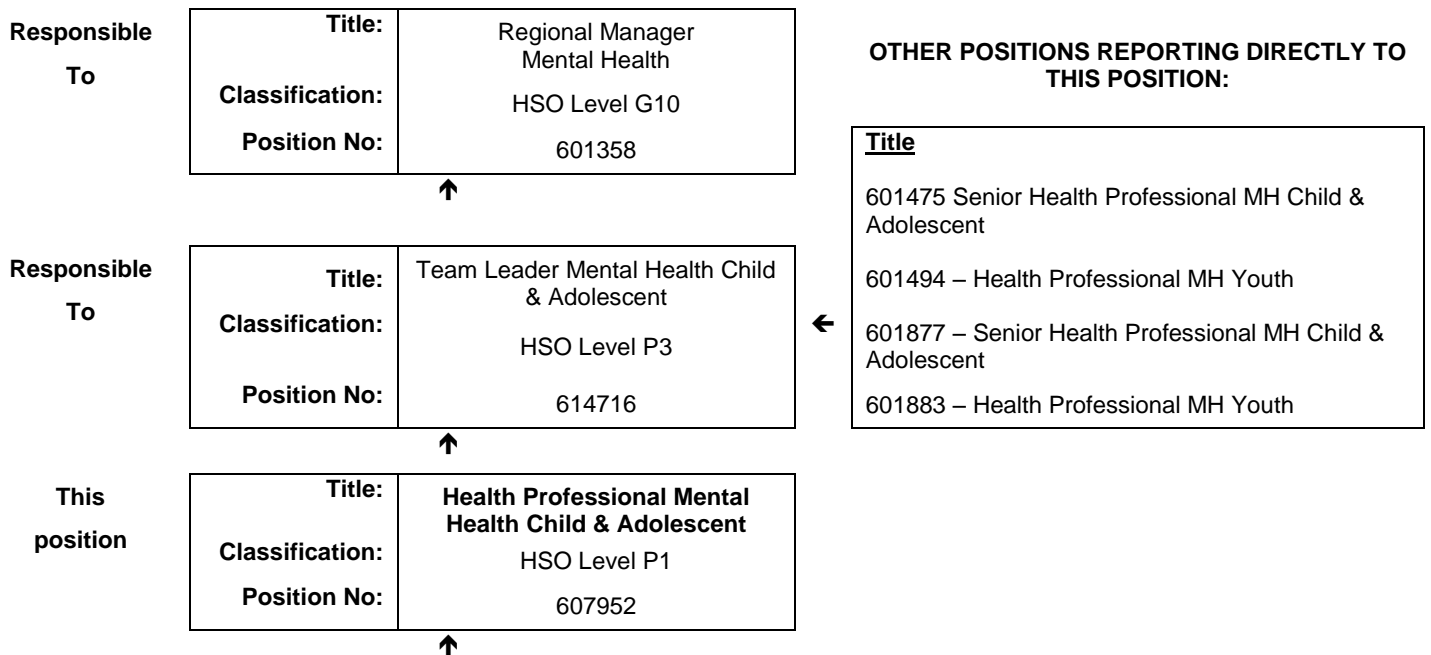


## JOB DESCRIPTION FORM

### Section 1 – POSITION IDENTIFICATION

<b>Goldfields</b>		<b>Position No:</b>	607952
<b>Division:</b>	Mental Health	<b>Title:</b>	<b>Health Professional Mental Health Child &amp; Adolescent</b>
<b>Branch:</b>	Kalgoorlie	<b>Classification:</b>	HSO Level P1
<b>Section:</b>	Community Mental Health	<b>Award/Agreement</b>	Health Salaried Officers Agreement

### Section 2 – POSITION RELATIONSHIPS



<b>Positions under direct supervision:</b>	<b>← Other positions under control:</b>				
<table style="width: 100%; border-collapse: collapse;"> <tr> <td style="width: 50%;">Position No.</td> <td style="width: 50%;">Title</td> </tr> </table>	Position No.	Title	<table style="width: 100%; border-collapse: collapse;"> <tr> <td style="width: 50%;">Category</td> <td style="width: 50%;">Number</td> </tr> </table>	Category	Number
Position No.	Title				
Category	Number				

### Section 3 – KEY RESPONSIBILITIES

Provides specialised mental health services for children, adolescents and their families in the WACHS-Goldfields Mental Health Service.

**WA Country Health  
Service – GOLDFIELDS**

20 July 2018

**REGISTERED  
Job Description Form**

TITLE	Health Professional Mental Health Child & Adolescent	POSITION NO	607952
		CLASSIFICATION	HSO Level P1



The WA Country Health Service (WACHS) is the largest country health system in Australia and one of the biggest in the world, providing health services to over half a million people, including over 50,000 Aboriginal people, over a vast two and a half million square kilometres area.

WA Country Health Service hospitals handle almost as many births as the State's major maternity hospital – and 40% of the State's emergency presentations. The range of health services provided include acute inpatient and emergency care, population and public health, mental health, Aboriginal health, aged care and includes increasing number of services provided by telehealth video-conferencing.

Our dedicated and committed staff work hard to fulfil our vision of Healthier country communities through partnerships and innovation, to deliver health services that support the health and well-being of individuals and communities in rural and remote Western Australia.

**OUR PURPOSE – What we are here to do**

WACHS improves country people's health and well-being through access to quality services and by supporting people to look after their own health.

**OUR STRATEGIC DIRECTIONS TO 2018**

1. Improving health the experience of care
2. Valuing consumers, staff and partnerships
3. Governance, performance and sustainable services

**OUR GUIDING PRINCIPLES**

Consumers first in all we do Safe, high quality services and information at all times

Care closer to home where safe and viable. Evidence based services

Partnerships and collaboration

**OUR VALUES**

**Community** – making a difference through teamwork, cooperation, a 'can do' attitude and country hospitality.

**Compassion** – listening and caring with empathy, respect, courtesy and kindness.

**Quality** – creating a quality health care experience for every consumer, continual improvement, innovation and learning.

**Integrity** – accountability, honesty and professional, ethical conduct in all that we do.

**Justice** – valuing diversity, achieving health equality, cultural respect and a fair share for all.



<b>TITLE</b>	<b>Health Professional Mental Health Child &amp; Adolescent</b>	<b>POSITION NO</b>	607952
		<b>CLASSIFICATION</b>	HSO Level P1

#### Section 4 – STATEMENT OF DUTIES

<b>Duty No.</b>	<b>Details</b>	<b>Freq.</b>	<b>%</b>
<b>1.0</b>	<b>PROFESSIONAL</b>		<b>70</b>
1.1	Provides and facilitates the delivery of high quality specialised mental health services for children and adolescents.		
1.2	Carries out mental health assessment (including home and community based), intervention, management planning and evaluation.		
1.3	Refers on to other services and agencies as appropriate, in accordance with recognised principles of professional practice.		
1.4	Consults with other Child & Adolescent Mental Health Clinicians, Mental Health Professionals, and Team Leader as required.		
1.5	Provides clinical case management services to children, adolescents and their families.		
1.6	Develops and maintains an extensive community based network with Schools, General Practitioners, Hospitals, Community Health and other service providers/community organisations and fosters partnerships and shared care arrangements.		
1.7	Develops and maintains an extensive community based network with Schools, General Practitioners, Hospitals, Community Health and other service providers/community organisations and fosters partnerships and shared care arrangements.		
1.8	Implements individual, group and community interventions in areas of professional expertise.		
1.9	Provides educational activities and programs for clients, family/carers, health service staff and community groups.		
1.10	Contributes to mental health promotion, early intervention and community development programs in collaboration with the mental health team, community members and other service providers.		
1.11	Ability to work flexible hours with availability for on call.		
1.12	Provides an outreach service as required.		
<b>2.0</b>	<b>ADMINISTRATION / QUALITY IMPROVEMENT</b>		<b>15</b>
2.1	Provides and maintains accurate records including National Outcomes & case mix data collection via the clinical information system (PSOLIS) as required by the service.		
2.2	Participates in the development, planning and evaluation of Mental Health Services with special reference to the needs of children and adolescents.		
2.3	Participates in Quality Improvement activities.		
<b>3.0</b>	<b>EDUCATION AND RESEARCH</b>		<b>10</b>
3.1	Promotes the development of clinical skills in working with children and adolescents in other professionals and colleagues.		
3.2	Accepts responsibility for and participates in own professional development.		
3.3	Participates in research projects as required.		
3.4	Supervises students as required.		
<b>4.0</b>	<b>OTHER</b>		<b>5</b>
4.1	Carries out other related duties as required.		
	The occupant of this position will be expected to comply with and demonstrate a positive commitment to the WACHS values and the highest achievement in demonstrating positive commitment to Equal Employment Opportunity, Occupational Safety & Health, Public Sector Standards, Code of Conduct, Code of Ethics, Quality Improvement, Performance Management, Customer Focus, Disability Services Act and Confidentiality throughout the course of their duties.		



<b>TITLE</b>	<b>Health Professional Mental Health Child &amp; Adolescent</b>	<b>POSITION NO</b>	607952
		<b>CLASSIFICATION</b>	HSO Level P1

### Section 5 – SELECTION CRITERIA

#### ESSENTIAL

1. Tertiary qualifications in Occupational Therapy, or Psychology or Nursing and eligible for registration with the relevant Board, OR Tertiary qualifications in Social Work and eligible for full membership of the Australian Association of Social Workers or the Society of Professional Social Workers.
2. Knowledge of emotional, behavioural, psychological and psychiatric disorders of children and adolescents.
3. Knowledge and ability to assess and provide evidence-based interventions for children and adolescents with mental health or related disorders, and their families.
4. Ability to work as an effective member of a multidisciplinary team.
5. Well developed communication and interpersonal skills, including the ability to promote positive peer and line management relationships.
6. Knowledge and understanding of government legislation and requirements in relation to OSH, EEO and Disability.
7. Current WA C or C-A Class Drivers Licence or equivalent and the ability to travel in the region, including overnight stays as required.

#### DESIRABLE

1. Sound knowledge of the key principles of the WA Mental Health Act (2014).
2. Knowledge and understanding of the provision of mental health services within a rural community.
3. Experience in working within a community mental health service setting.
4. Knowledge of Mental Health Promotion and Early Intervention principles for Children & Adolescents.

### Section 6 – APPOINTMENT FACTORS

<b>Location</b>	Kalgoorlie	<b>Accommodation</b>	As determined by the WA Country Health Service Policy
<b>Allowances/ Appointment Conditions</b>	Appointment is subject to: <ul style="list-style-type: none"> <li>• Evidence of registration with the applicable Board of Registration/Australian Association or Society must be provided prior to commencement</li> <li>• Completion of a 100 point identification check</li> <li>• Successful Criminal Record Screening clearance and a Working with Children (WWC) check.</li> <li>• Successful Pre- Placement Health Screening clearance</li> <li>• Current WA C or C-A Class drivers licence or equivalent</li> </ul> Allowances <ul style="list-style-type: none"> <li>• District Allowance as applicable</li> </ul>		
<b>Specialised equipment operated</b>			

### Section 7 – CERTIFICATION

The details contained in this document are an accurate statement of the duties, responsibilities and other requirements of the position.

Signature and Date: \_\_\_\_/\_\_\_\_/\_\_\_\_  
**Regional Manager Mental Health**

Signature and Date: \_\_\_\_/\_\_\_\_/\_\_\_\_  
**Regional Director**

As occupant of the position I have noted the statement of duties, responsibilities and other requirements as detailed in this document.

Name	Signature	Date Appointed	Date Signed

