

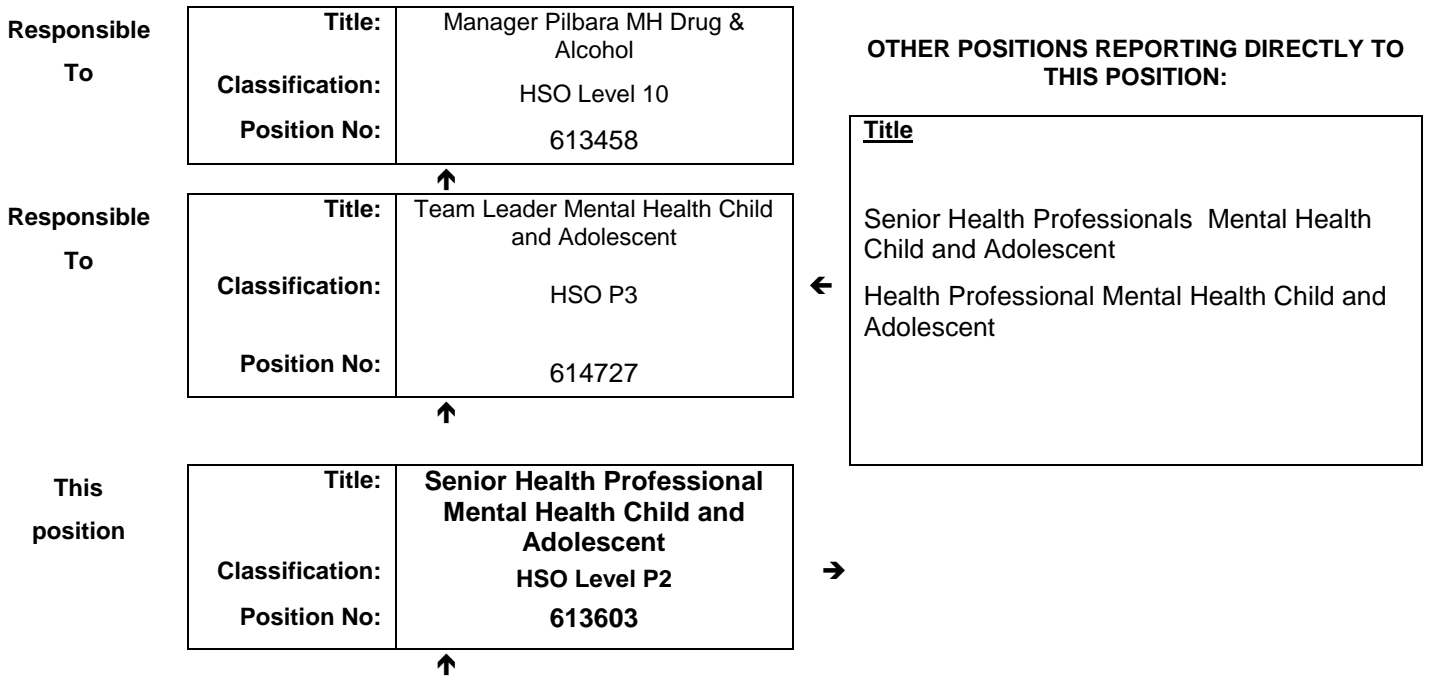


## JOB DESCRIPTION FORM

### Section 1 – POSITION IDENTIFICATION

WA Country Health Service		<b>Position No:</b>	<b>613603</b>
<b>Division:</b>	Pilbara	<b>Title:</b>	<b>Senior Health Professional Mental Health Child and Adolescent</b>
<b>Branch:</b>	Pilbara Mental Health and Drug Service	<b>Classification:</b>	<b>HSO Level P2</b>
<b>Section:</b>	Newman	<b>Award/Agreement</b>	<b>Health Salaried Officers Agreement</b>

### Section 2 – POSITION RELATIONSHIPS



<b>Positions under direct supervision:</b>	<b>← Other positions under control:</b>								
<table border="1"> <tr> <th>Position No.</th> <th>Title</th> </tr> <tr> <td> </td> <td> </td> </tr> </table>	Position No.	Title			<table border="1"> <tr> <th>Category</th> <th>Number</th> </tr> <tr> <td> </td> <td> </td> </tr> </table>	Category	Number		
Position No.	Title								
Category	Number								

### Section 3 – KEY RESPONSIBILITIES

Provides community based child and adolescent mental health services to clients of the Mental Health and Drug Service in the Pilbara as part of the Newman Health team, based on best practice, including providing a service which is culturally secure and takes into account the emotional, social and spiritual well-being of Aboriginal clients.

<b>WA Country Health Service</b>
<b>Pilbara</b>
<b>9 November 2018</b>
<b>REGISTERED</b>

TITLE	Senior Health Professional Mental Health Child and Adolescent	POSITION NO	613603
		CLASSIFICATION	HSO Level P2



The WA Country Health Service (WACHS) is the largest country health system in Australia and one of the biggest in the world, providing health services to over half a million people, including over 50,000 Aboriginal people, over a vast two and a half million square kilometres area.

WA Country Health Service hospitals handle almost as many births as the State's major maternity hospital – and 40% of the State's emergency presentations. The range of health services provided include acute inpatient and emergency care, population and public health, mental health, Aboriginal health, aged care and includes increasing number of services provided by telehealth video-conferencing.

Our dedicated and committed staff work hard to fulfil our vision of Healthier country communities through partnerships and innovation, to deliver health services that support the health and well-being of individuals and communities in rural and remote Western Australia.

**OUR PURPOSE – What we are here to do**

WACHS improves country people's health and well-being through access to quality services and by supporting people to look after their own health.

**OUR STRATEGIC DIRECTIONS TO 2018**

1. Improving health the experience of care
2. Valuing consumers, staff and partnerships
3. Governance, performance and sustainable services

**OUR GUIDING PRINCIPLES**

Consumers first in all we do Safe, high quality services and information at all times Care closer to home where safe and viable. Evidence based services

Partnerships and collaboration

**OUR VALUES**

**Community** – making a difference through teamwork, cooperation, a 'can do' attitude and country hospitality.

**Compassion** – listening and caring with empathy, respect, courtesy and kindness.

**Quality** – creating a quality health care experience for every consumer, continual improvement, innovation and learning.

**Integrity** – accountability, honesty and professional, ethical conduct in all that we do.

**Justice** – valuing diversity, achieving health equality, cultural respect and a fair share for all.

<p><b>WA Country Health Service Pilbara</b></p> <p><b>9 November 2018</b></p> <p><b>REGISTERED</b></p>
------------------------------------------------------------------------------------------------------------

<b>TITLE</b>	<b>Senior Health Professional Mental Health Child and Adolescent</b>	<b>POSITION NO</b>	<b>613603</b>
		<b>CLASSIFICATION</b>	<b>HSO Level P2</b>

#### Section 4 – STATEMENT OF DUTIES

<b>Duty No.</b>	<b>Details</b>	<b>Freq.</b>	<b>%</b>
<b>1.0</b>	<b>PROFESSIONAL</b>		<b>60</b>
1.1	Conducts initial assessments, (including home & community based) and provides intervention and case management services to children and adolescents with mental health problems, and their families, using evidence-based practices.		
1.2	Provides crisis assessment and crisis intervention for children and adolescents with mental health problems (as well as adults with mental health problems, in support of the adult mental health program, as required).		
1.3	Identifies, develops and implements Mental Health promotion, education and community development programs in consultation with stakeholders, including other service providers and the community.		
1.4	Works as an effective member of a multidisciplinary team, including active participation in interdisciplinary case conferences and clinical team meetings.		
1.5	Develops and maintains an extensive community based network with Schools, Hospitals, GP's, Community Health and other service providers, and community organizations, for the benefit of clients		
1.6	Acts as a resource for NWMHS staff and other health care providers.		
1.7	Provides clinical reports (as appropriate to skill and background), support and advocacy for child and adolescent clients as required.		
1.8	Convenes and attends inter-agency case conferences.		
1.9	Strives to achieve continuous improvement through participation in Quality Management projects.		
<b>2.0</b>	<b>ADMINISTRATIVE</b>		<b>20</b>
2.1	Maintains adequate records and collates statistical data in accordance with the requirements of the Northwest Mental Health Service.		
2.2	Participates in intake meetings, team meetings and clinical review meetings, as well as case supervision, as required.		
2.3	Participates in the development, planning and evaluation of Mental Health services with special reference to the needs of children and adolescents.		
2.4	Complies with EEO and OS&H principles, standards and practices and policies and procedures.		
2.5	Strives to achieve continuous improvement through participation in Quality Management projects.		
<b>3.0</b>	<b>EDUCATION AND RESEARCH</b>		<b>15</b>
3.1	Provides educational programmes to clients and families, and to other health professionals, Schools, NGO's and community organisations.		
3.2	Participates in staff development programmes.		
3.3	Accepts responsibility for, and participates, in ongoing professional development.		
3.4	Acts as resource for the dissemination and information related to Child & Adolescent Mental Health		
3.5	Initiates and participates in research projects as required.		
<b>4.0</b>	<b>OTHER</b>		<b>5</b>
4.1	Carries out other duties as required.		
	The occupant of this position will be expected to comply with and demonstrate a positive commitment to the WACHS values and the highest achievement in demonstrating positive commitment to Equal Employment Opportunity, Occupational Safety & Health, Public Sector Standards, Code of Conduct, Code of Ethics, Quality Improvement, Performance Management, Customer Focus, Disability Services Act and Confidentiality throughout the course of their duties.		



TITLE	Senior Health Professional Mental Health Child and Adolescent	POSITION NO	613603
		CLASSIFICATION	HSO Level P2

**Section 5 – SELECTION CRITERIA**

**ESSENTIAL**

1. Tertiary qualifications in Psychology, Occupational Therapy, or Nursing and eligible for registration with the relevant Registration Board of Australia, OR tertiary qualifications in Social Work and eligible for full membership of the Australian Association of Social Workers or the Society of Professional Social Workers.
2. Demonstrated knowledge and understanding of emotional, behavioural, psychological and psychiatric disorders of children and adolescents and their treatment.
3. Demonstrated experience at an advanced level in assessment, crisis-intervention, treatment and case management of children and adolescents with mental health problems.
4. Demonstrated knowledge and understanding of the principles of prevention and promotion in child and adolescent mental health.
5. Well-developed written and verbal communication, liaison, team-work and interpersonal skills.
6. Current C class drivers licence and ability and willingness to travel within the Pilbara including overnight stays away from home.
7. Demonstrated capability in data collection and program evaluation.

**DESIRABLE**

1. Understanding of the issues around providing Mental Health services within a rural/remote community, including provision of culturally appropriate services to indigenous families and communities.
2. Current knowledge and commitment to Equal Opportunity in all aspects of employment and service delivery

**Section 6 – APPOINTMENT FACTORS**

Location	Newman	Accommodation	As determined by the WA Country Health Service Policy
Allowances/ Appointment Conditions	District Allowance if applicable, Annual Leave Travel Concession if applicable, one week additional leave for above the 26 <sup>th</sup> Parallel, Air-conditioning subsidy if applicable Appointment is subject to: <ul style="list-style-type: none"> <li>• Tertiary qualifications in Psychology, Occupational Therapy, or Nursing and eligible for registration with the relevant Registration Board of Australia, OR tertiary qualifications in Social Work and eligible for full membership of the Australian Association of Social Workers or the Society of Professional Social Workers.</li> <li>• Completion of a 100 point identification check</li> <li>• Successful Criminal Record Screening clearance</li> <li>• Successful Pre- Placement Health Screening clearance</li> <li>• Successful Working With Children clearance</li> <li>• Current C class licence and ability and willingness to travel within the Pilbara including overnight stays away from home.</li> </ul>		
Specialised equipment operated			

**Section 7 – CERTIFICATION**

The details contained in this document are an accurate statement of the duties, responsibilities and other requirements of the position.



Signature and Date: \_\_\_\_/\_\_\_\_/\_\_\_\_  
**Manager Pilbara MH Drug & Alcohol**



Signature and Date: \_\_\_\_/\_\_\_\_/\_\_\_\_  
**Regional Director**

As occupant of the position I have noted the statement of duties, responsibilities and other requirements as detailed in this document.

Name	Signature	Date Appointed	Date Signed

